

HEPBURN 72" DOUBLE SINK BASE CABINET

ARIEL

T072D



BASE CABINET DIMENSIONS

72" W x 21.5" D x 34.5" H

FEATURES

- Solid wood frame & plywood panels
- Dovetail drawers and joints
- Soft closing doors & drawers

HARDWARE FINISHES



Brushed Nickel



Satin Brass



Matte Black



Polished Chrome

AVAILABLE COLORS



White

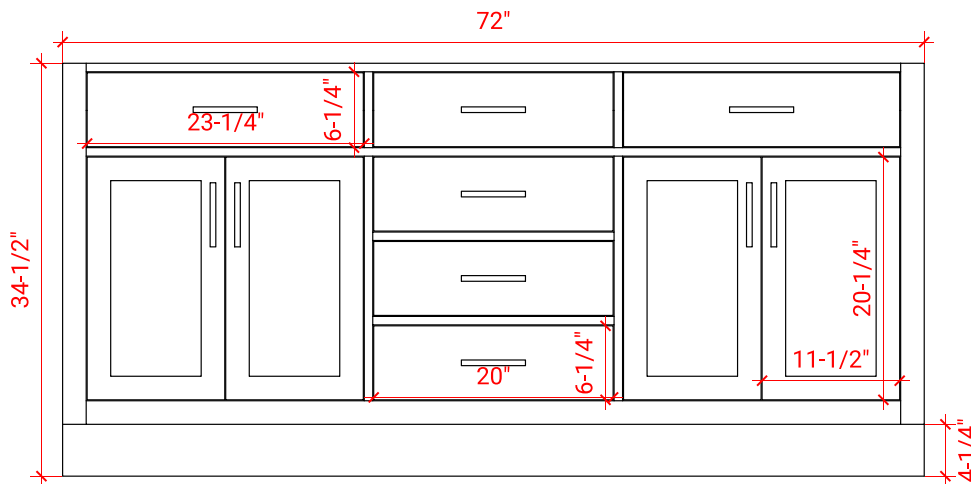


Grey

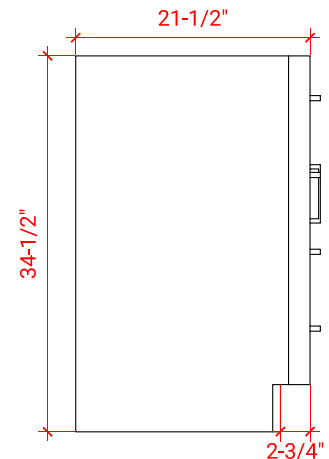


Midnight Blue

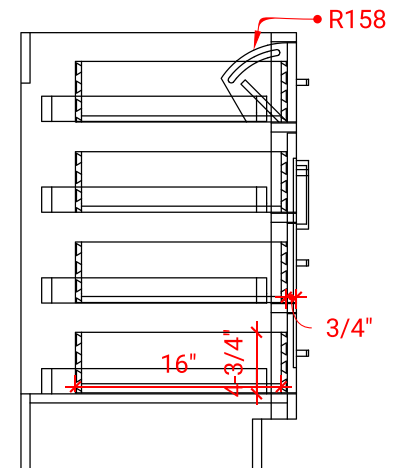
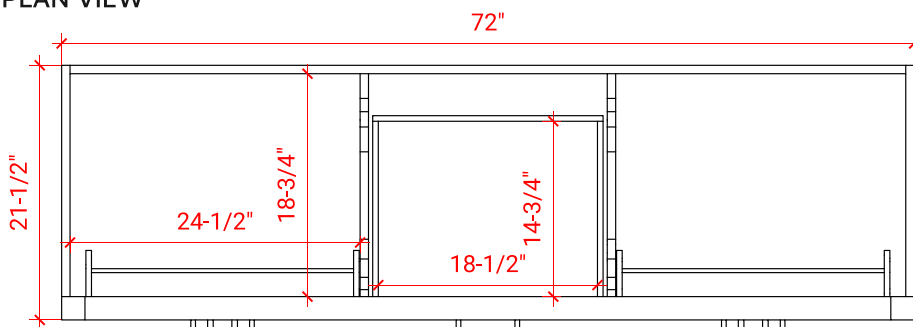
FRONT VIEW



SIDE VIEW



PLAN VIEW



ARIEL

72.25" W x 22".D x 1.5" H

- Solid countertop with mitered edges & seams
- Undermount white oval sink
- Pre-drilled for 8" widespread faucet

- Countertop
- Matching Backsplash
- Oval Sinks

Technical drawing of a mechanical part. The part has a vertical section on the left with a jagged break line. The main body is a horizontal plate. The top surface is flat. The bottom surface has a vertical step down on the right side. The dimensions are: overall height 1-1/2", overall width 3/4", and the width of the top flange 3/4". A dashed line indicates a fillet radius R2 at the bottom right corner.

Isometric view of a rectangular plate with the following dimensions and features:

- Overall length: $72\frac{1}{4}"$
- Overall width: $22"$
- Thickness: $4"$
- Two circular holes, each with a diameter of $1\frac{1}{2}"$.
- Four small circular holes, each with a diameter of $1"$.