

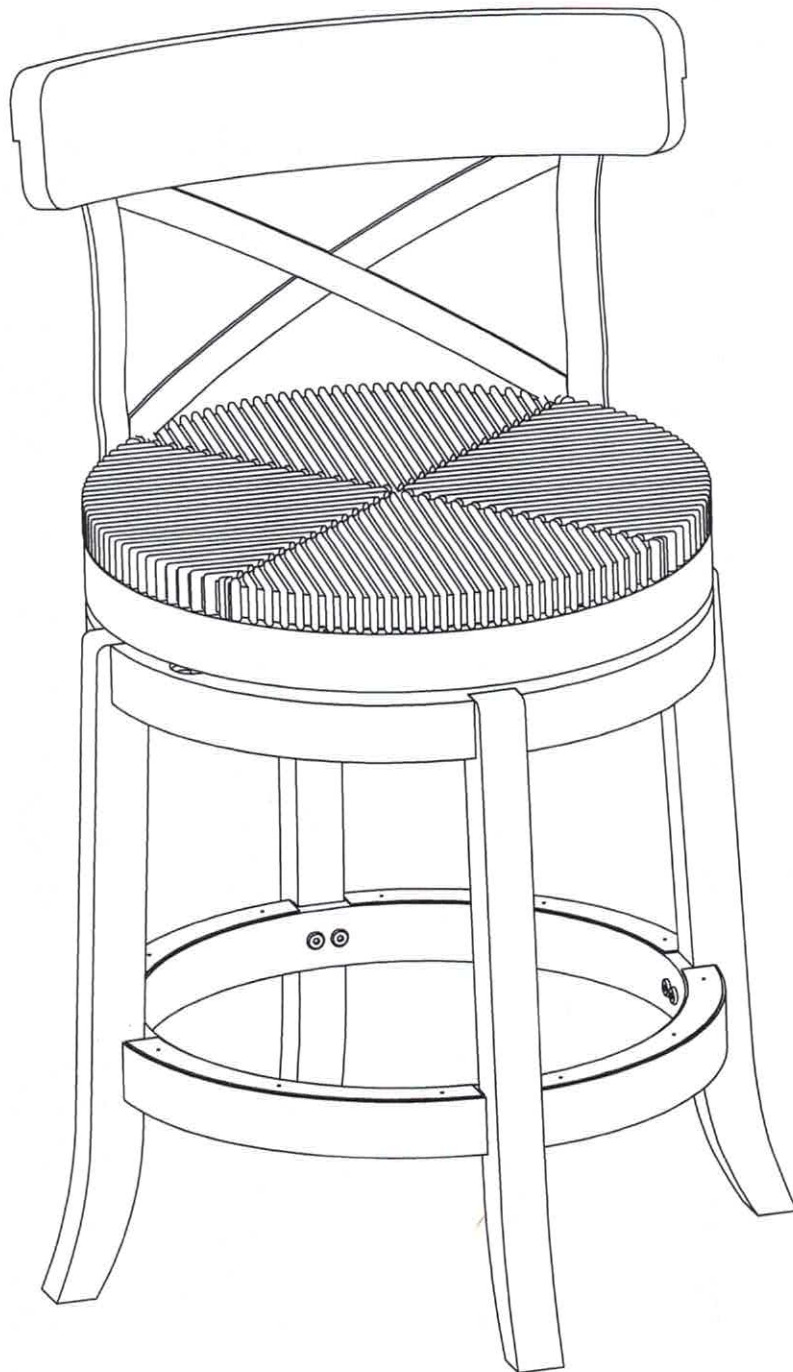
76924, 76929, 76824, 76829



Boraam Industries

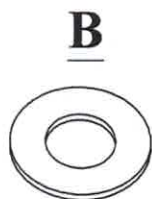
MYRTLE SWIVEL STOOL

ASSEMBLY INSTRUCTIONS

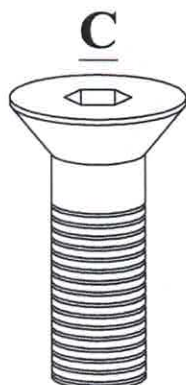




20 PCS



20 PCS



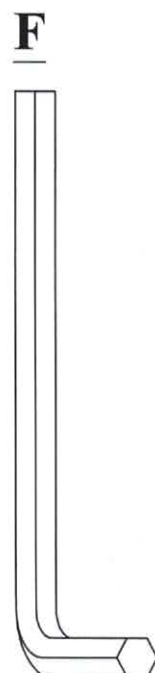
4 PCS



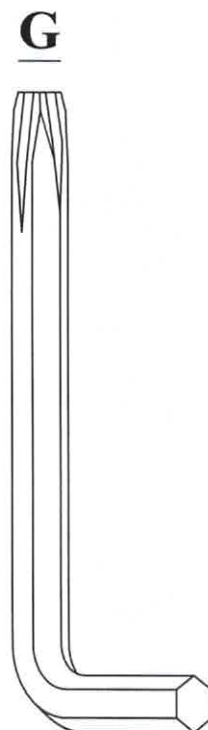
12 PCS



8 PCS

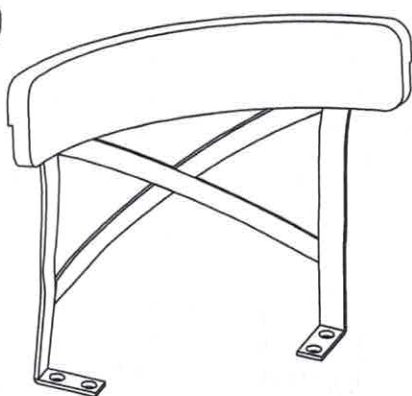


1 PC

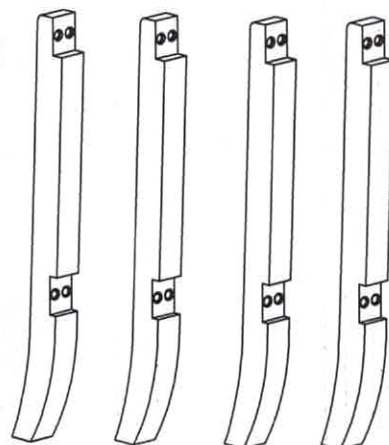


1 PC

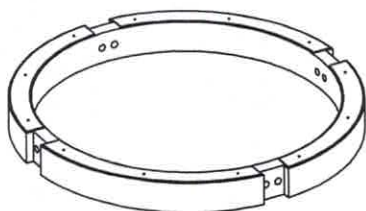
1



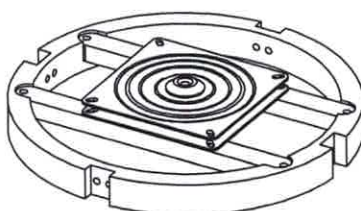
2



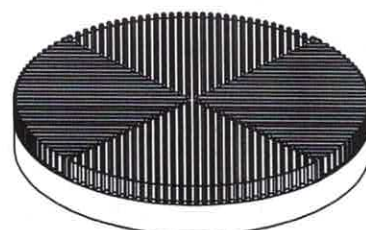
3



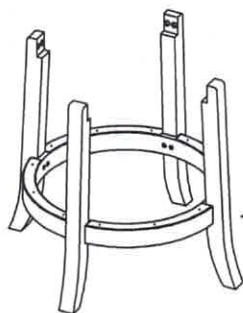
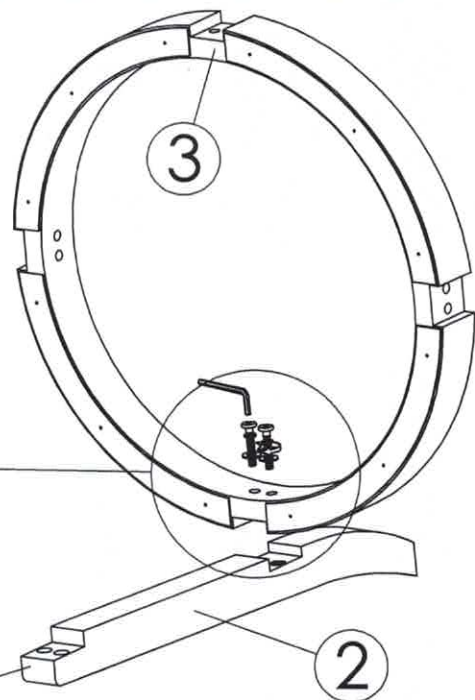
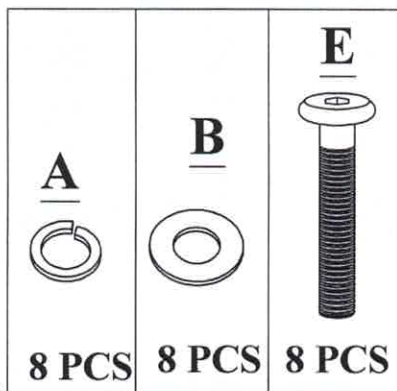
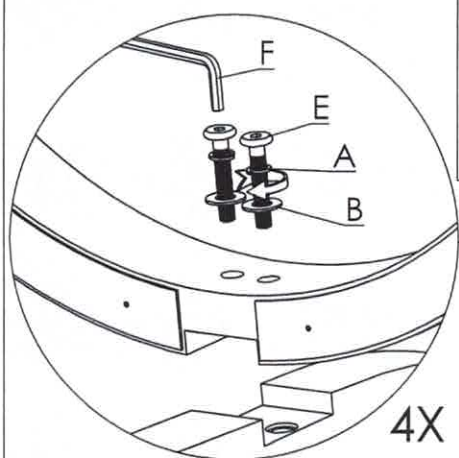
4



5

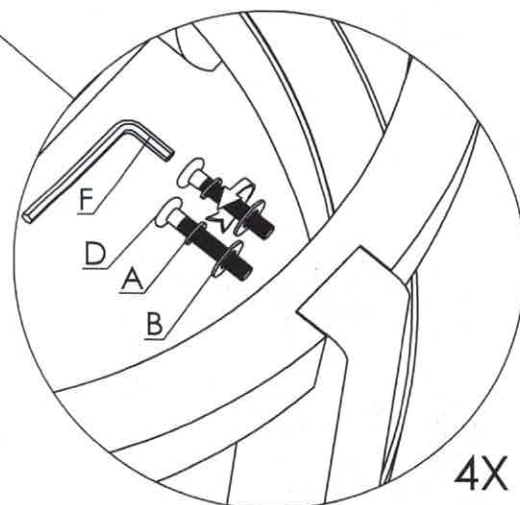
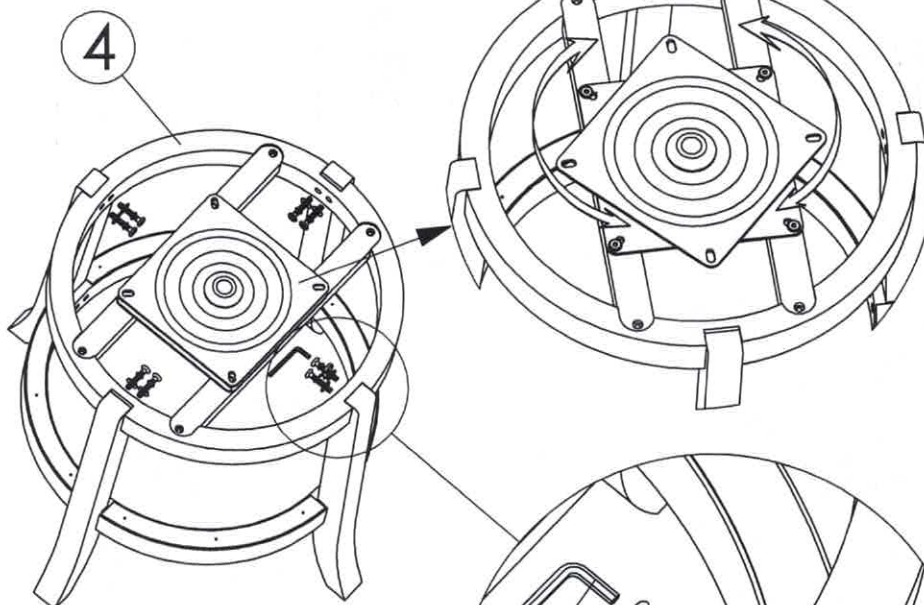
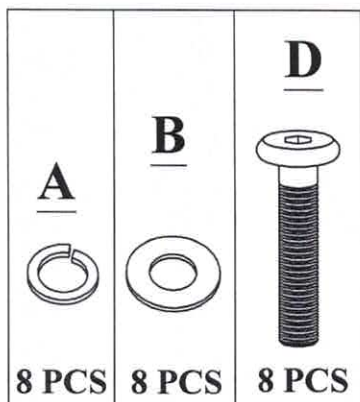


01



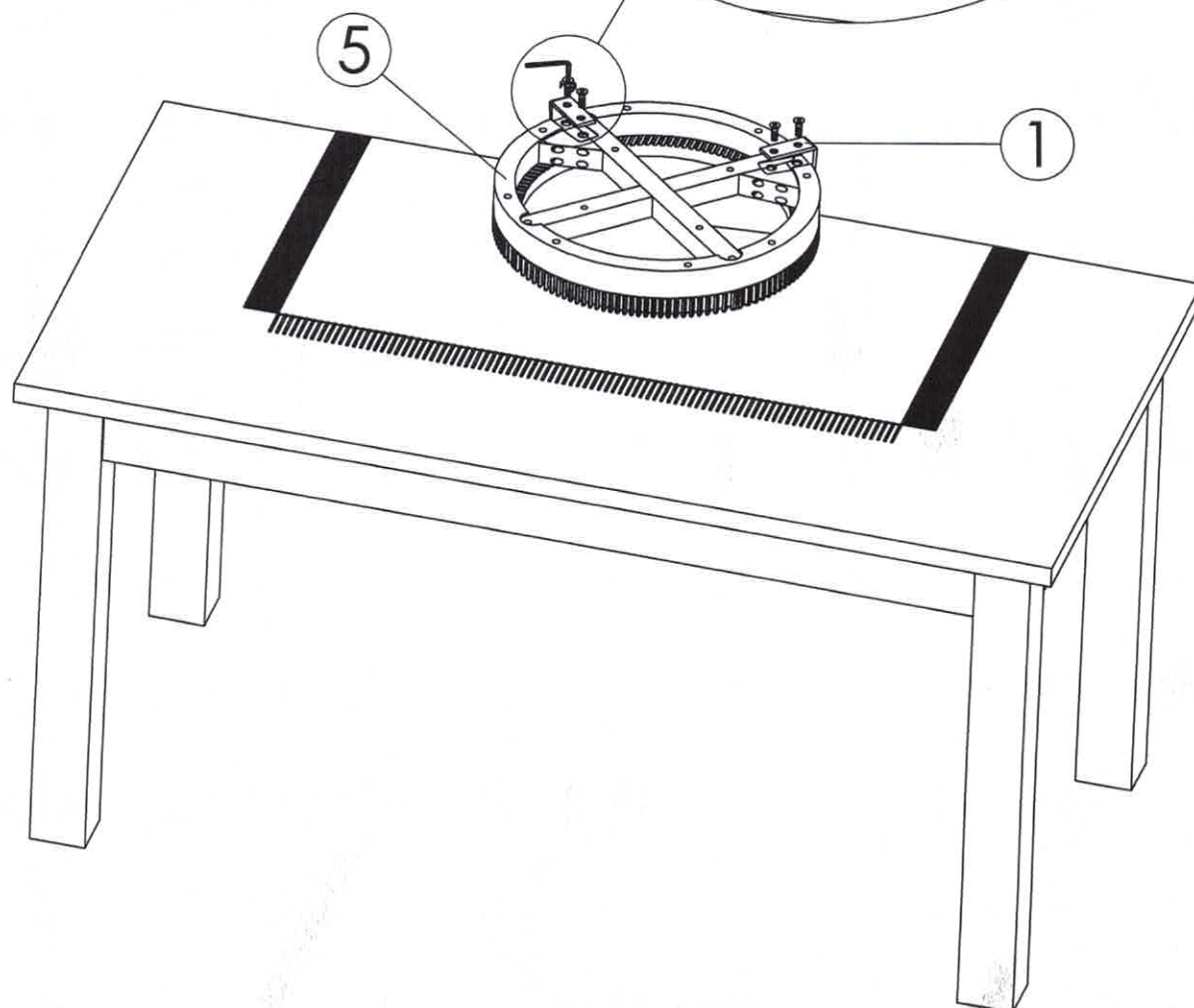
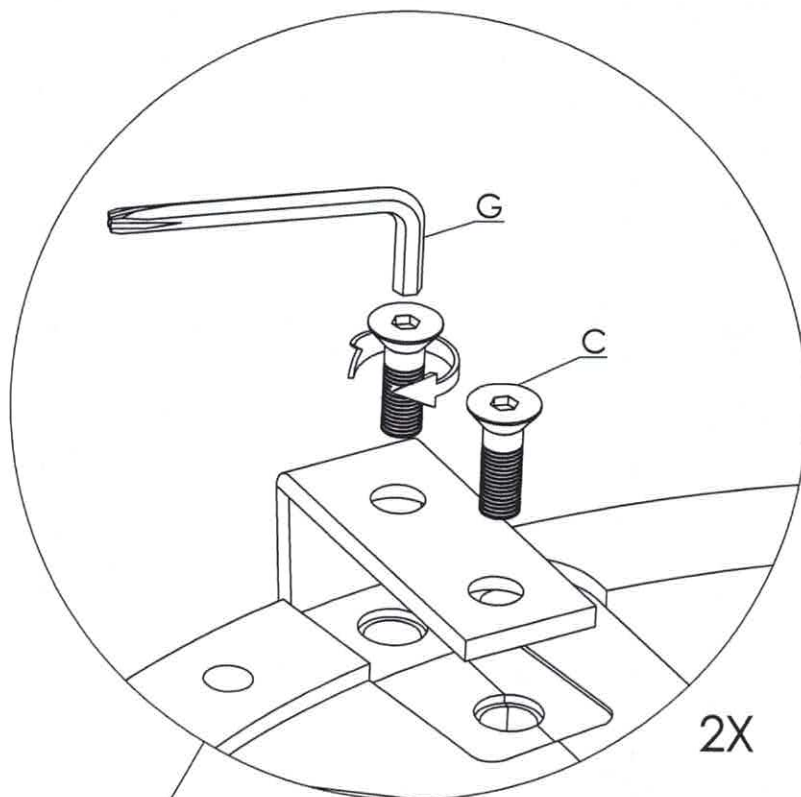
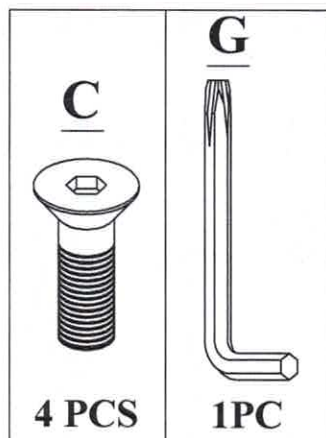
DO NOT TIGHTEN BOLT COMPLETELY.

02



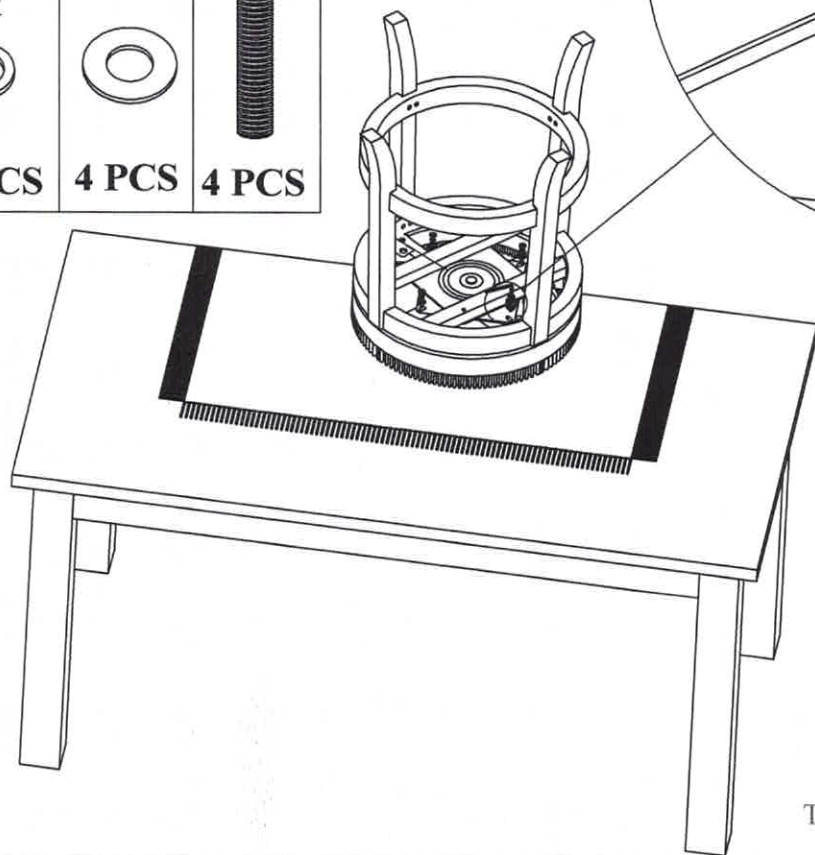
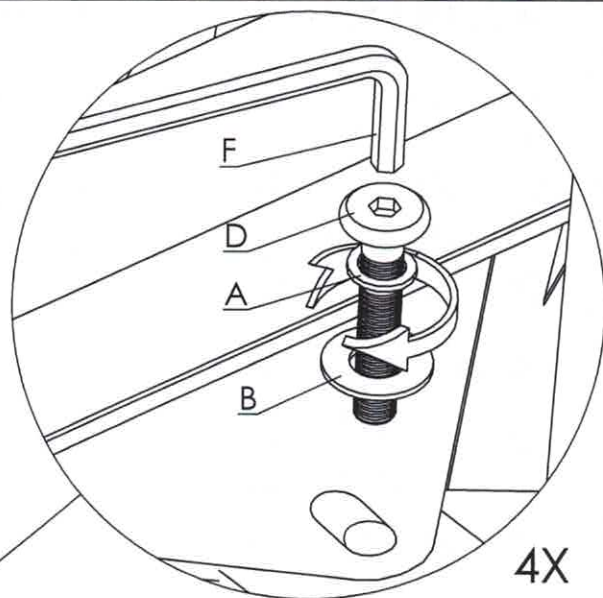
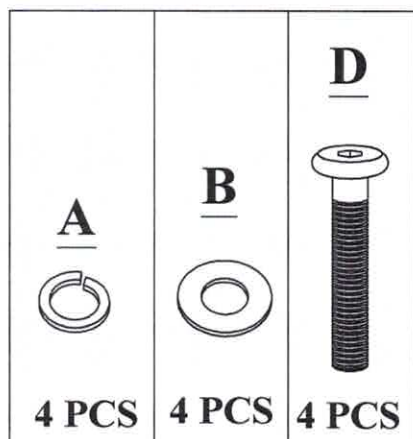
TIGHTEN BOLT COMPLETELY.

03

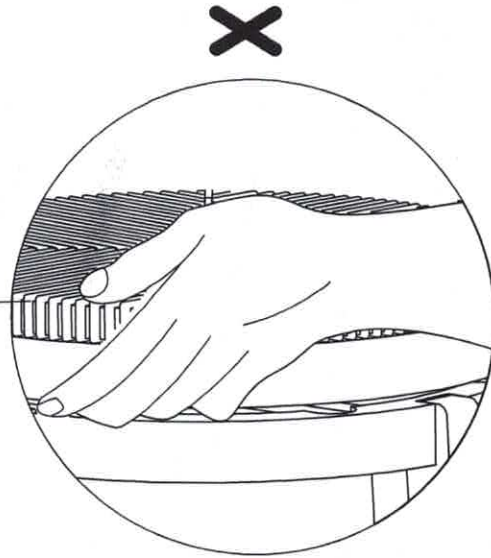
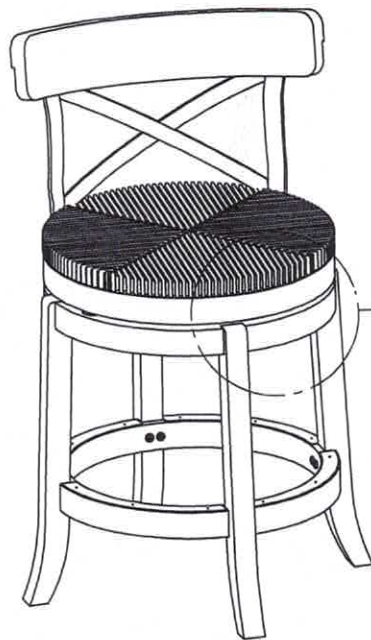


TIGHTEN BOLT COMPLETELY.

04



TIGHTEN BOLT COMPLETELY.



BE SURE TO CHECK ALL BOLTS ARE SECURELY TIGHTENED PRIOR USING THIS STOOL.