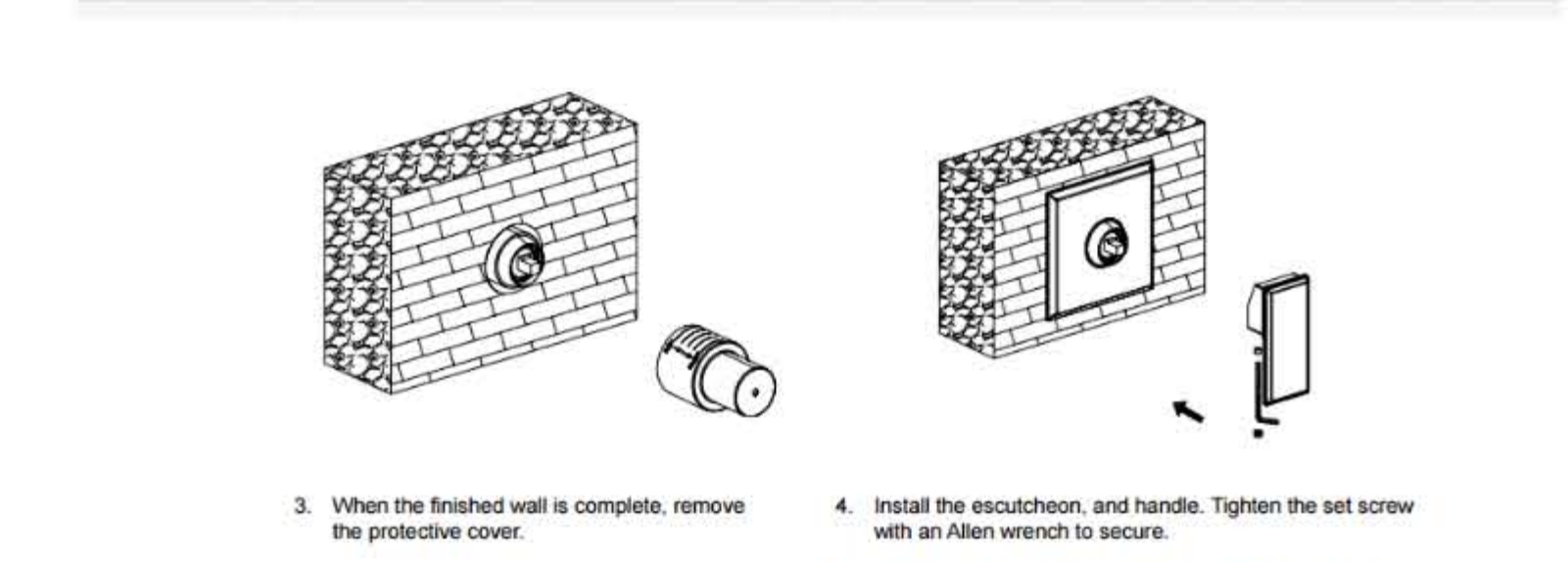
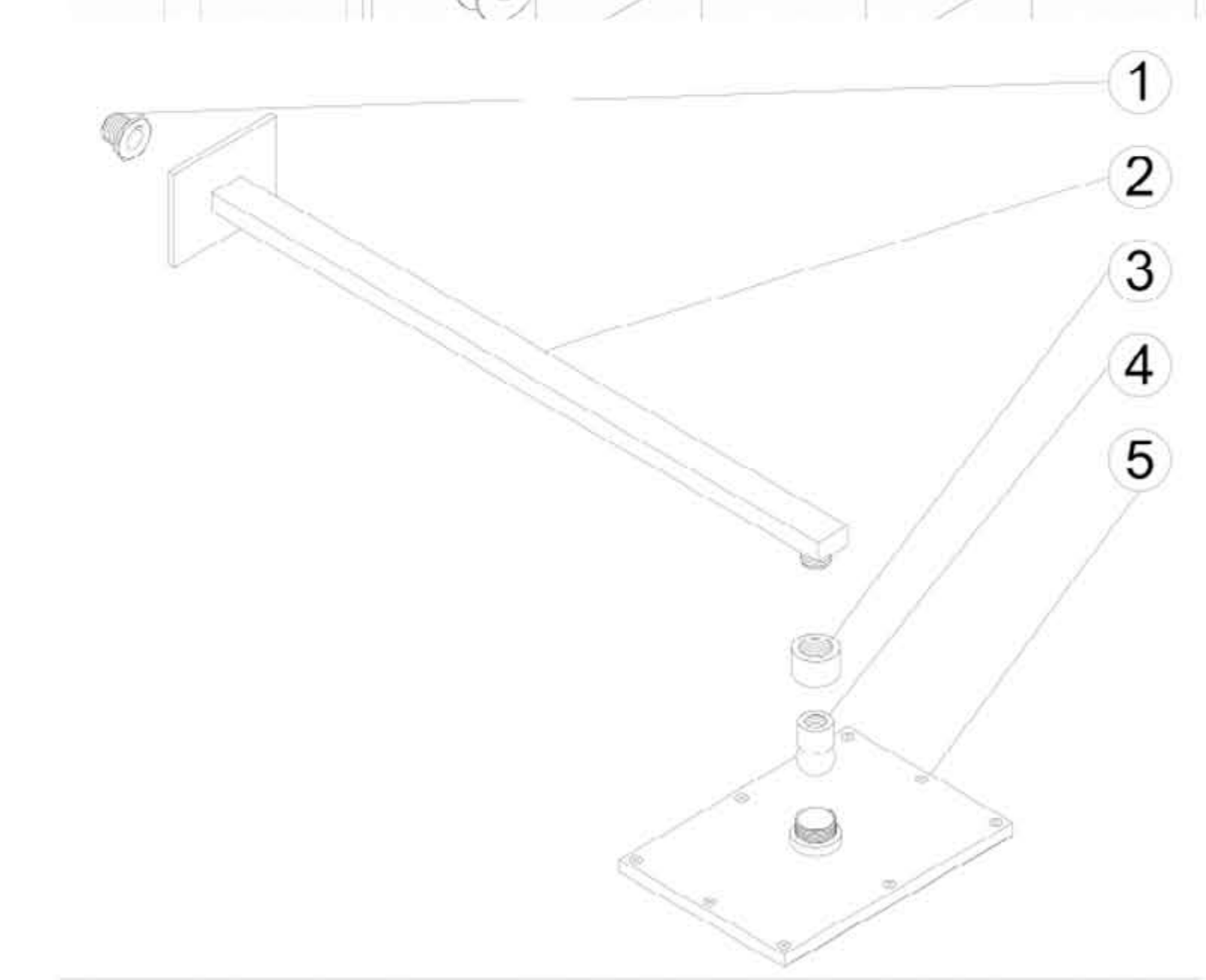
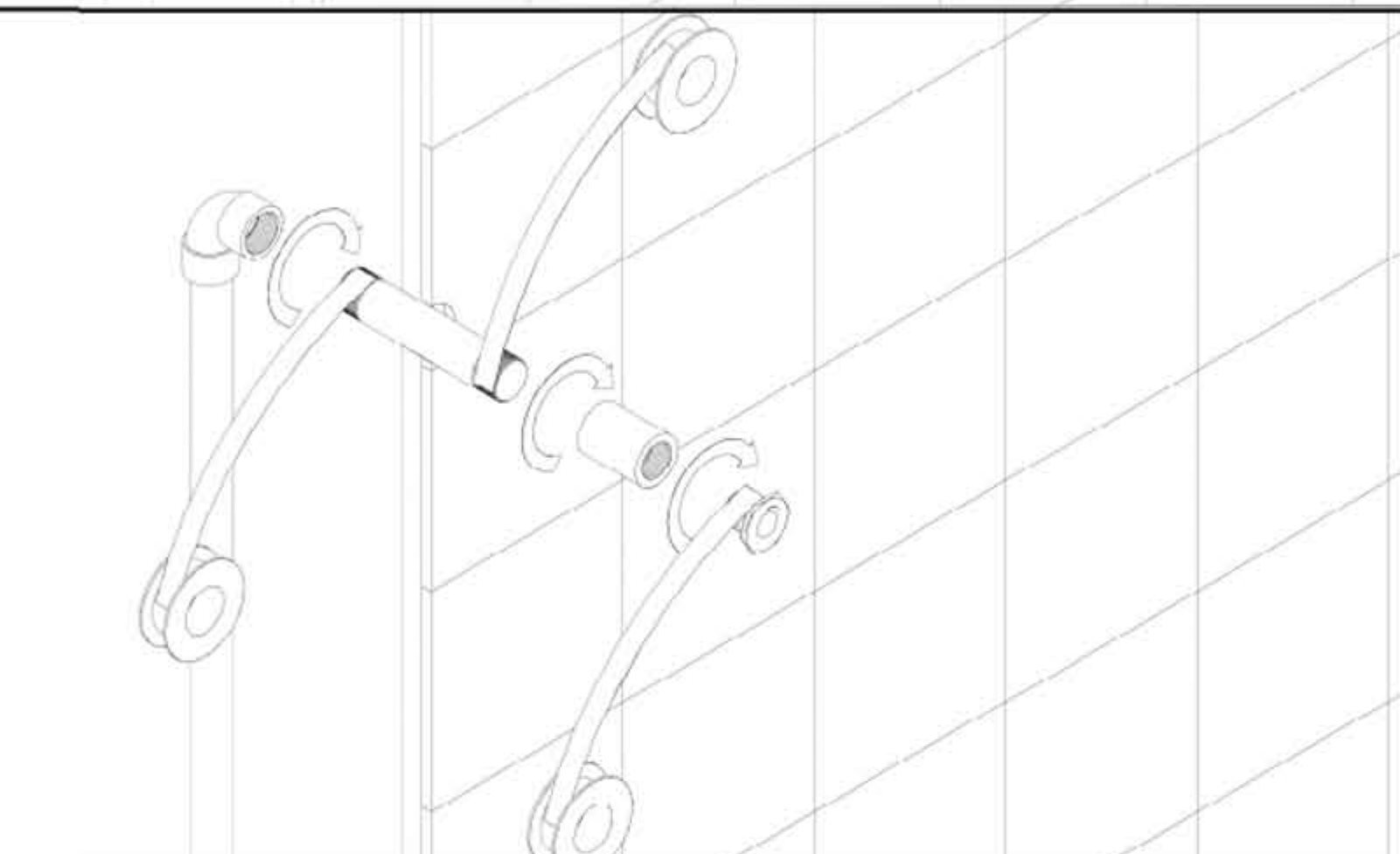
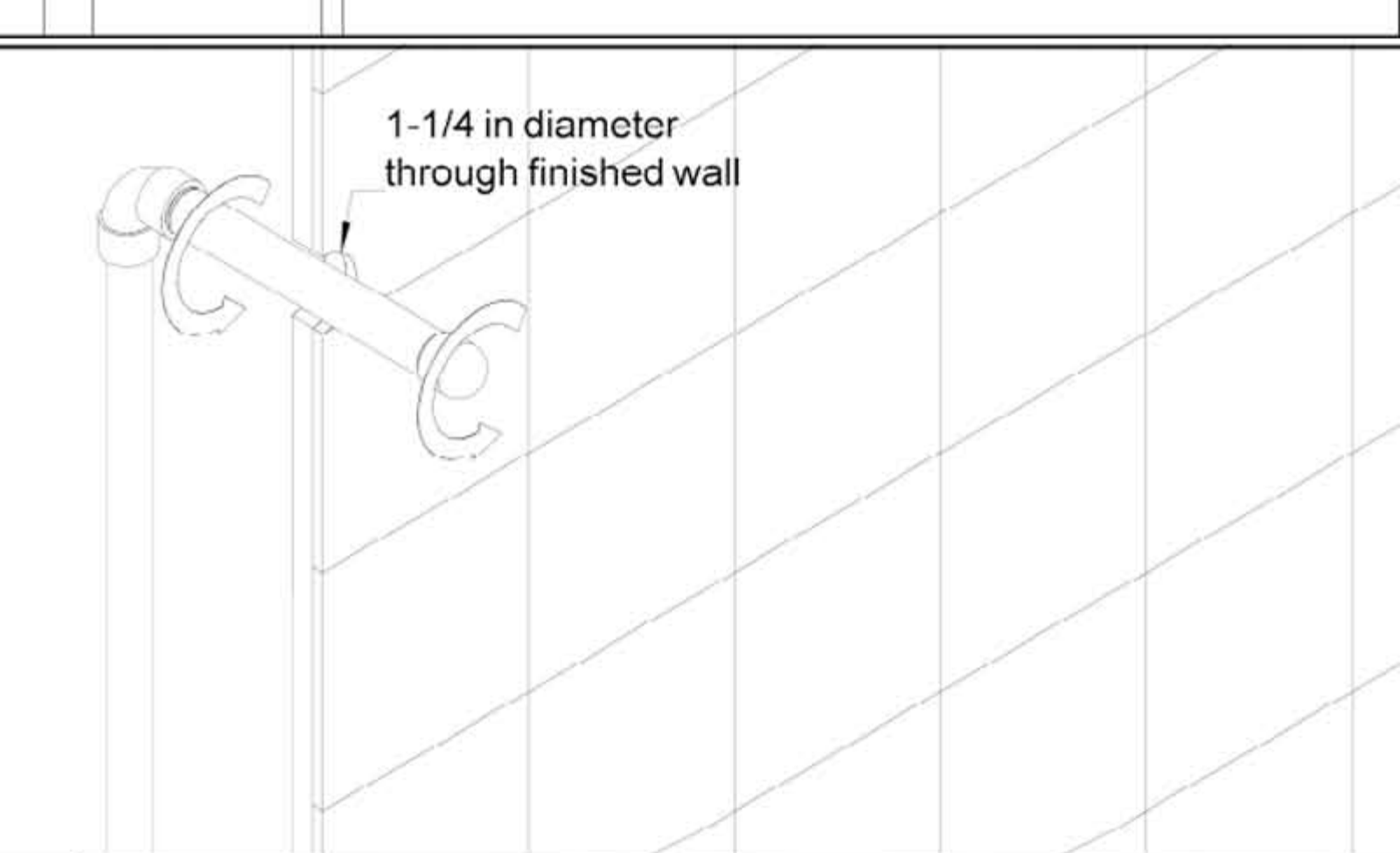
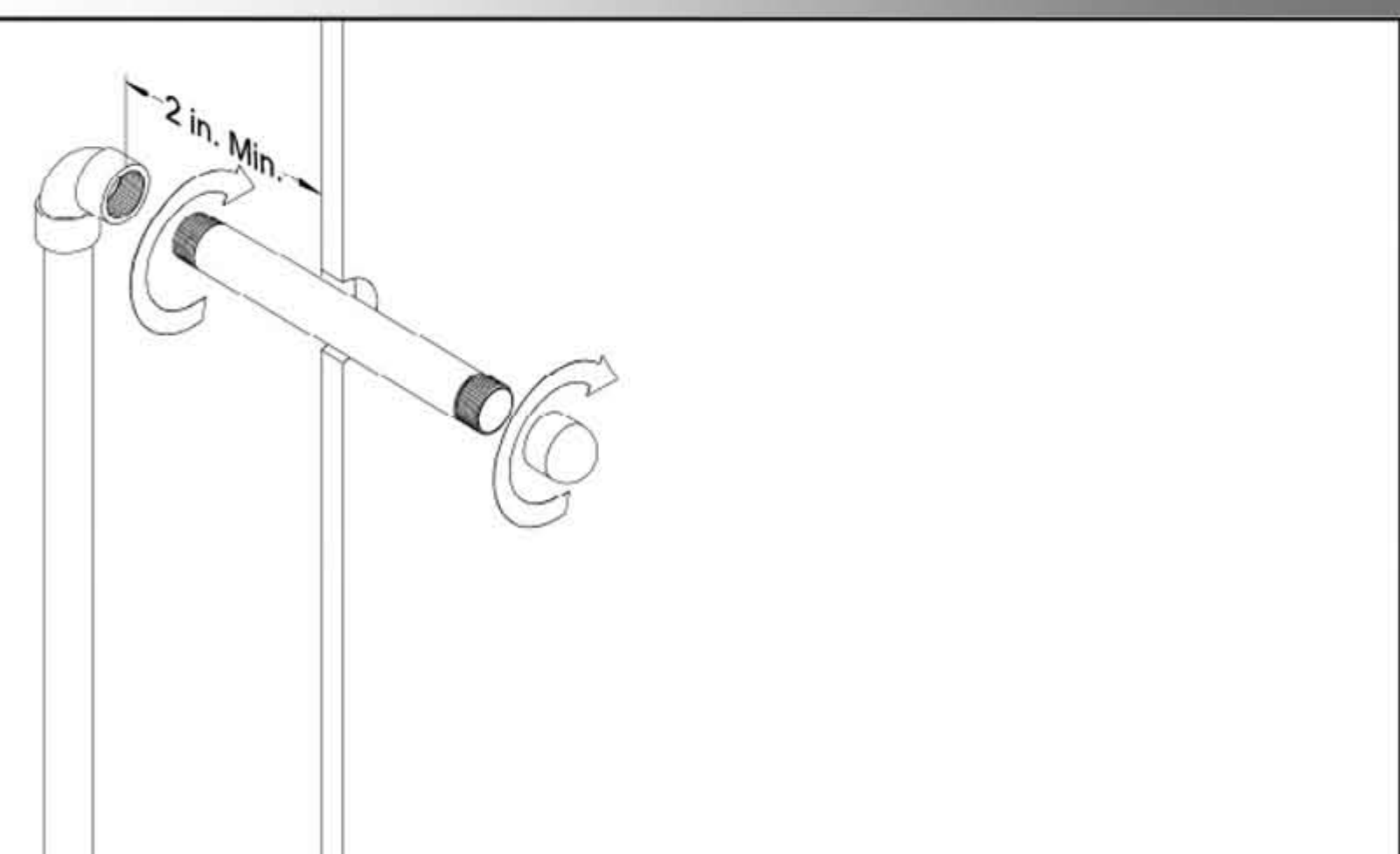


Fontana Monro LED Shower Set - LED Shower Head, Multilevel Mixer



INSTALLATION STEPS



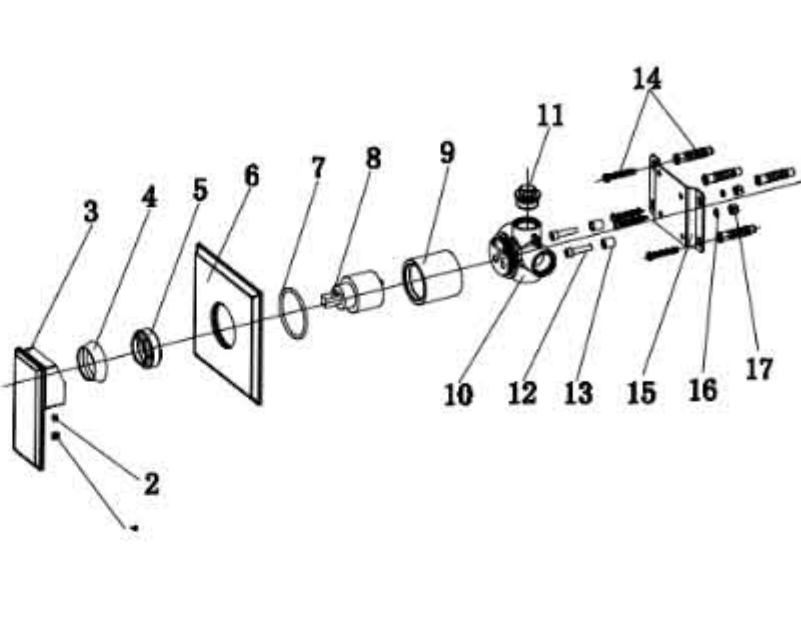
3. When the finished wall is complete, remove the protective cover.

4. Install the escutcheon, and handle. Tighten the set screw with an Allen wrench to secure.

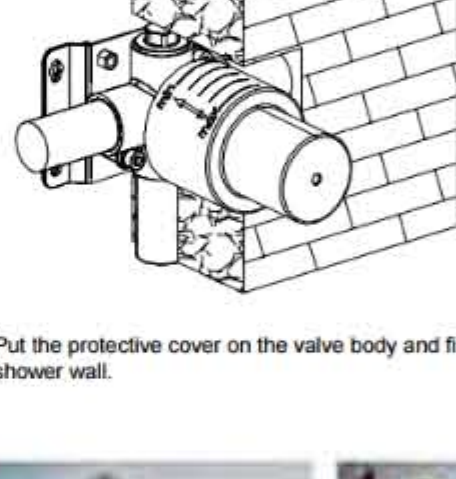
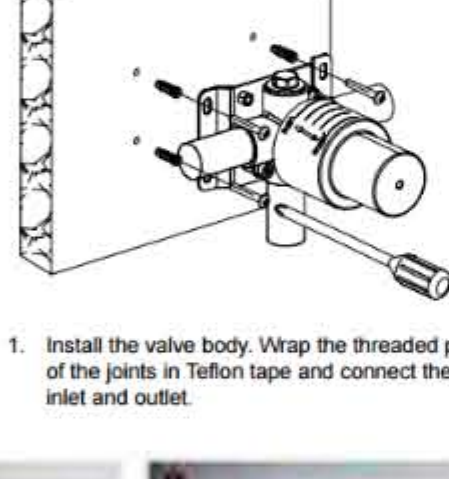
5. Attach the shower arm escutcheon to the shower arm. Wrap the threaded portions of the shower arm with Teflon tape and connect the arm to the shower inlet. Adjust the direction of the water flow as needed. Attach the rainfall shower head to the shower arm.

VALVE EXPLODED VIEW:

1	SD10101000200
2	M0105004
3	SD15617000100
4	SD10117000400
5	SD10117000500
6	SD15619000300
7	OXQ50030
8	FX0402
9	SD10117000600
10	SD10119000800-1
11	SD10119000700-1
12	M0305022
13	SD10119000900
14	M0805032
15	SD10119001000
16	SD10119001100
17	M110405



INSTALLATION:



1. Install the valve body. Wrap the threaded portion of the joints in Teflon tape and connect the water inlet and outlet.

2. Put the protective cover on the valve body and finish the shower wall.



This General diagram and installation instructions are not intended for any specific model, but is presented as a general guideline for Installations!