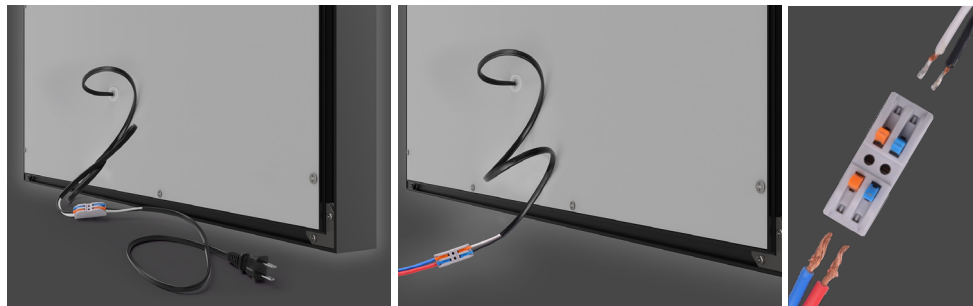


Step 4. Two Ways Of Connection



1. connect to power source directly by using the plug installed

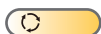
2. Through the connector provided, here is how:
a. remove the plug by pull up the buttons of the connector
b. connect the wire from your home power source to one end of the connect
c. make sure all wires settled firmly

Operating Instruction



OFF ON

Turn on or off the anti-fog function



Touch to switch White Light / Natural Light / Warm Light



OFF ON

Turn on or off the LED lights



Long press to adjust light brightness

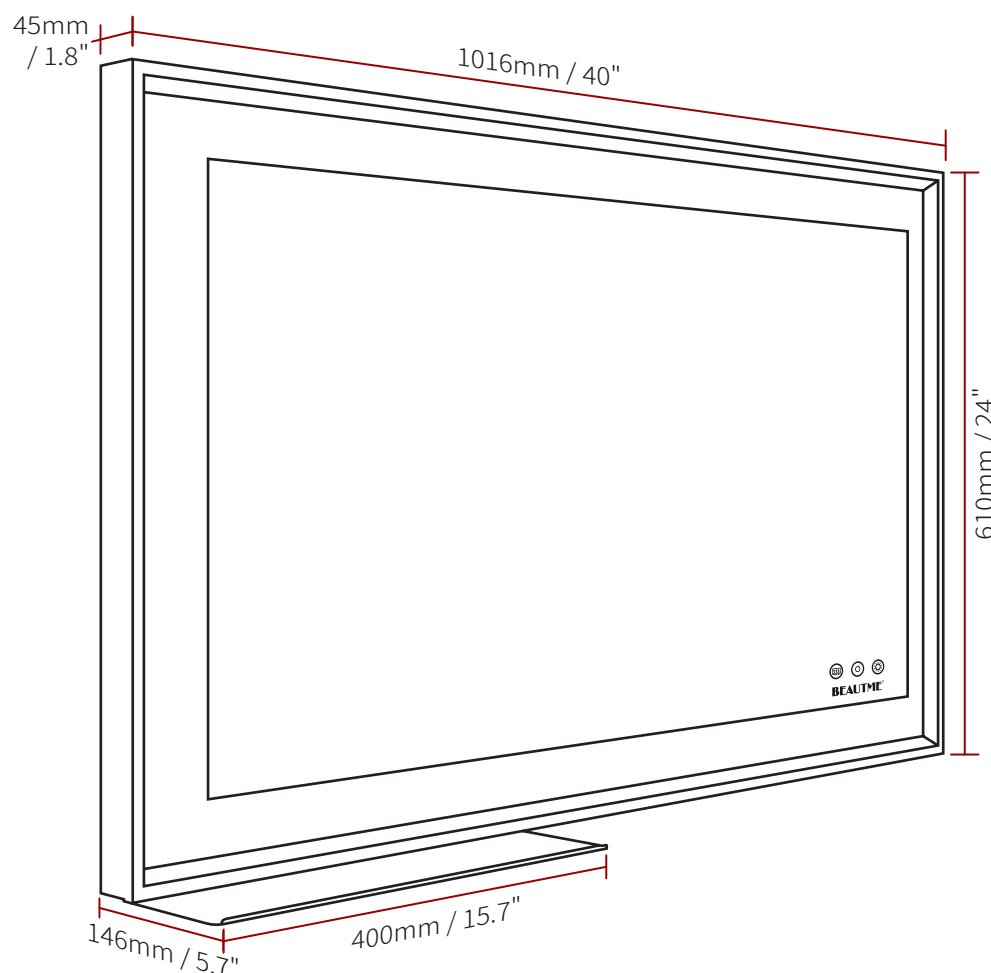
Notice

For warranty , please kindly contact us for return policy if any issues happen.

- (1) Please read the instructions carefully before using.
- (2) Make sure that your charging device is adequate for the mirror voltage rating before using.
- (3) Turn off the power and avoid direct sunlight if not used or stored for a long time. Far away from children's access.
- (4) Please do not disassemble or remodel mirror, and keep it away from sharp things.
- (5) Please do not use corrosive liquids to clean the mirror.
- (6) Please do not violently throw, hit and rub mirror.
- (7) Do not approach or put the product into the fire in case of fire or explosion.
- (8) Please stop using it immediately if an abnormality occurs.

BEAUTME® WALL-MOUNTED LED BATHROOM MIRROR

BM1B User Manual



Product Information

Name	Wall-Mounted LED Bathroom Mirror
Model	BM1B
Voltage	12V 4A
Lighting Power	Max 48W
Anti-fog Power	Max 30W
Input	UL110V
Product Size	1016×610×45mm (40×24×1.8 inches)
Frame Color	Black + Gold
Color Temperature	White Light 6500K, Natural Light 4800K, Warm Light 3200K
Material	Aluminium + Glass

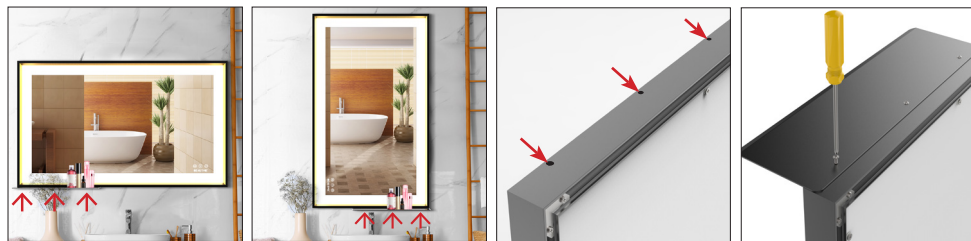
Product Installation

Accessories included



Step 1. Tray installation

1. This mirror supports two wall-mounted methods, Horizontal or Vertical
2. Fix the tray to the mirror according to your actual situation



- a. Horizontal
Screw holes located at the bottom left
- b. Vertical
Screw holes located at the bottom right
- c. take off the sticker before installation
- d. Put the tray on and tighten with screws

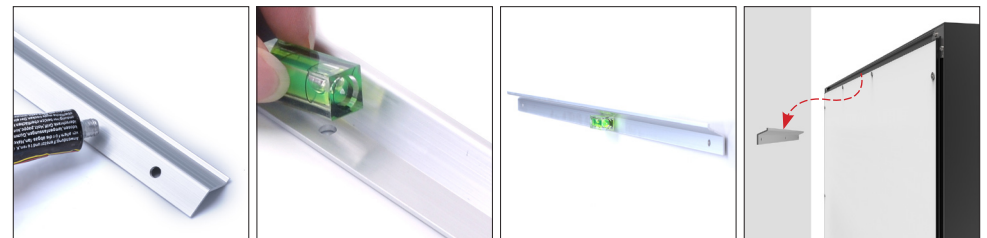
Step 2. Foam pads installation



1. Paste the foam pad to the back of the mirror
2. Horizontal paste position
3. Vertical paste position

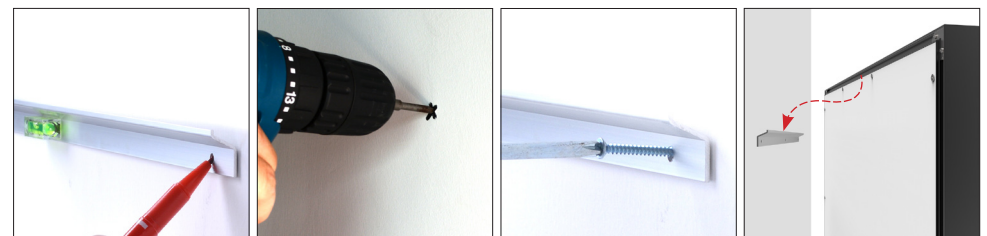
Step 3. Wall-Mounted Ways and

Situation1 Hole-free installation (Only suitable for smooth glass or tiled walls)



1. Apply nail-free glue to the back of the hook
2. Stick the level vial closely on the hook
3. Align the position and fix the hook to the wall, then wait at least 48 hours to dry the nail-free glue (better 72hrs)
4. Hang up the mirror as above demonstration and make sure the hook goes into the slot of the mirror frame

Situation2 Drilling installation



1. Use the level vial to choose a suitable location on the wall and mark it
2. Drill holes and insert the expansion tube into the hole
3. Fix the hook with screws
4. Hang up the mirror as above demonstration and make sure the hook goes into the slot of the mirror frame