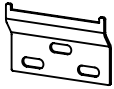
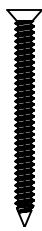


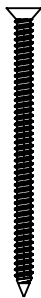
**A** x 1 Adams cabinet



**B** x 4 Wall bracket



**C** x 12  
Medium  
size  
screw  
(2 1/4" L)



**D** x 5  
Long  
size  
screw  
(2 3/4" L)

## TOOLS REQUIRED



Phillips  
screwdriver



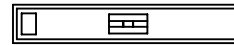
Measuring  
tape



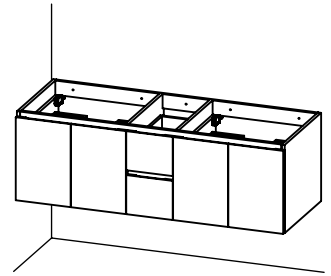
Power drill



Pencil



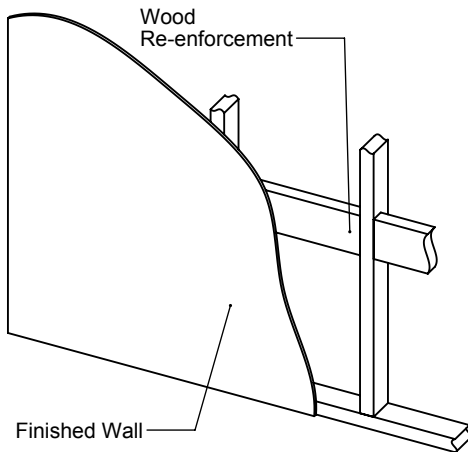
Level



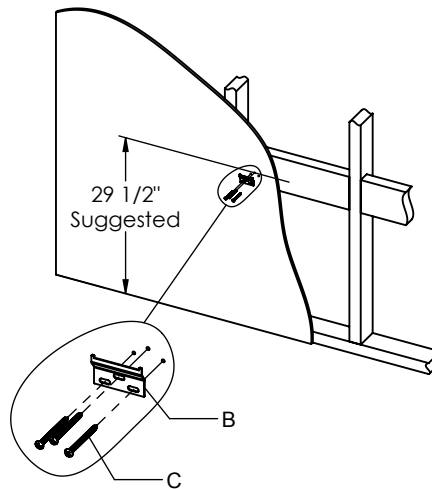
Finished view

# INSTALLATION INSTRUCTIONS ADAMS 60 & 72 DOUBLE (IC7060D, IC7072D)

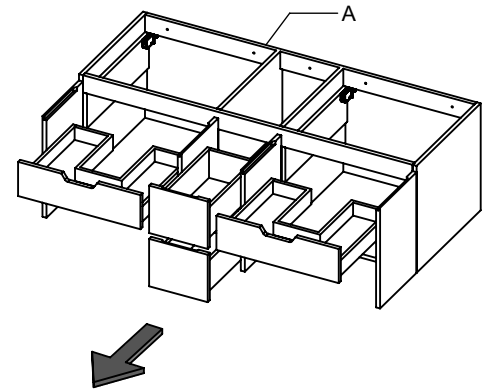
- 1** Re-enforce the wall using a sheet of plywood or 2" by 8" wood beams in between wall studs.



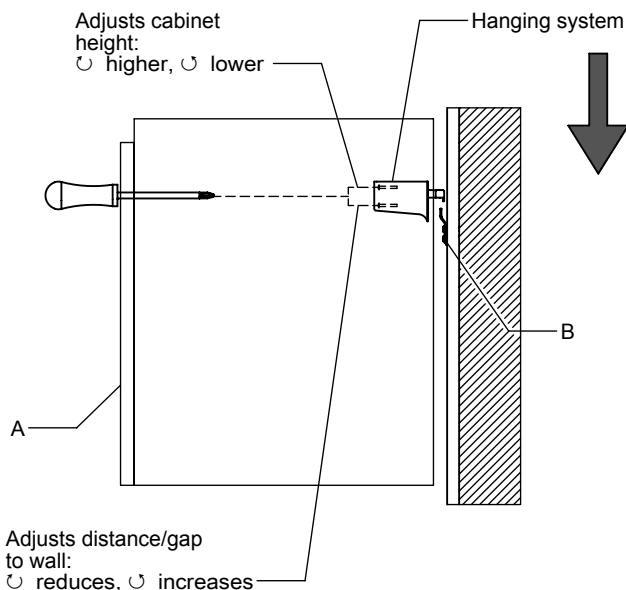
- 2** Measuring for the desired height and location, secure all four wall brackets (B) to the wall. Make sure that screws (C) go into the re-enforced area of the wall. 29.5" to the top screw is the recommended height.



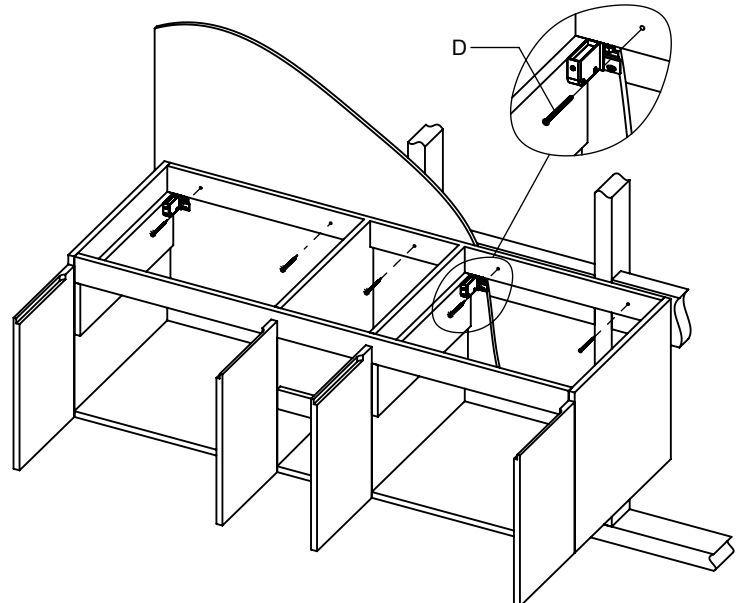
- 3** Remove drawers from ADAMS cabinet (A) if necessary. See drawer removal guidance in the next page.

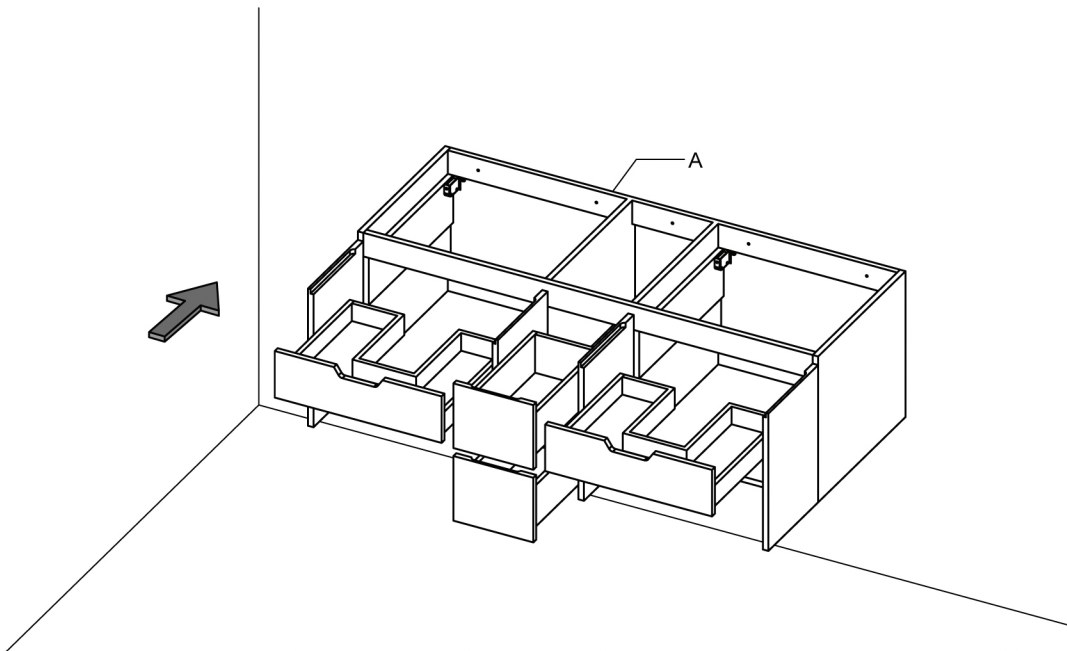


- 4** Hang cabinet (A) onto wall brackets (B) and adjust hanging system using the adjustment screws as shown below.



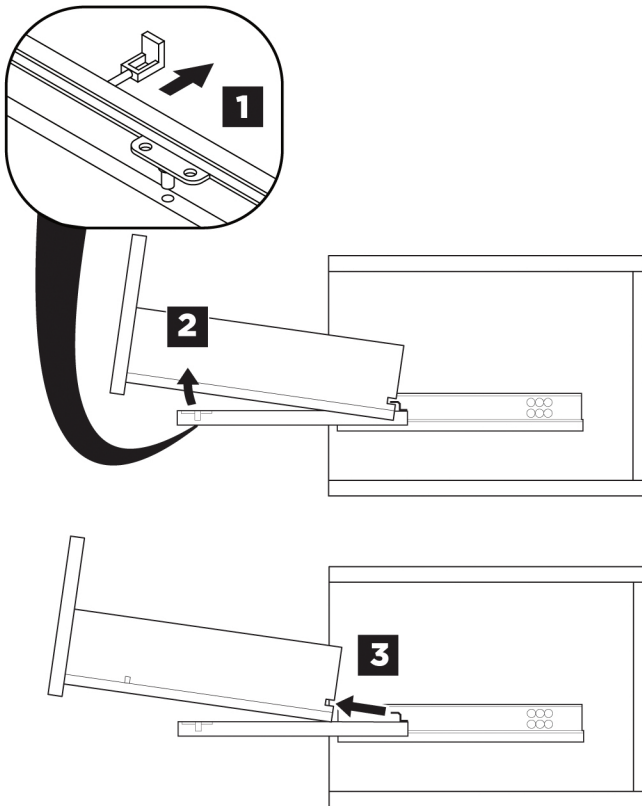
- 5** After cabinet (A) is flush with the wall and leveled, secure it to the wall using long screws (D). Make sure to drive screws (D) into re-enforced area of the wall.





## DRAWER REMOVAL AND INSTALLATION

### REMOVAL



### INSTALLATION

