

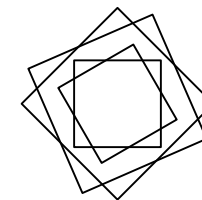
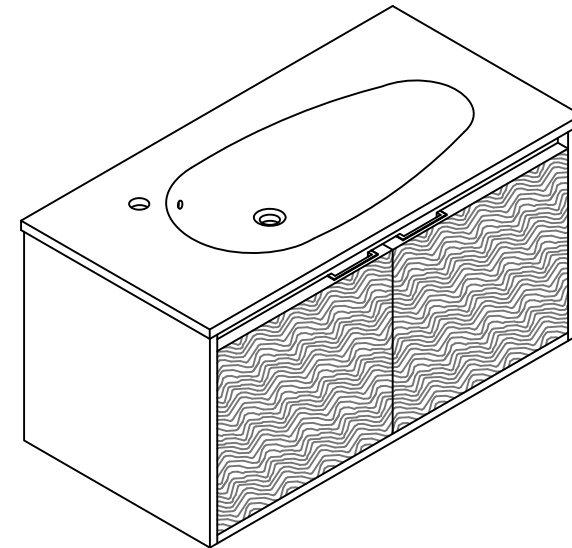
Installation Manual-

BV B06024
BV B06030
BV B06036

MOTIVATE
YOUR LIFE !

THANKS FOR WATCHING

Your feedback is invaluable to us and we would love to hear about your experience. Please take the time to leave us a review.















Thank you for shopping with us!

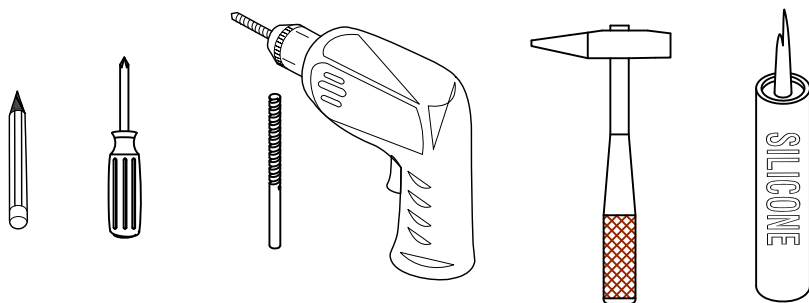
We encourage you to take a few minutes to go through this booklet. It contains important information on installation and care tips to keep your furniture looking as good as new.

Item NO.:BV B06024 / BV B06030 / BV B06036

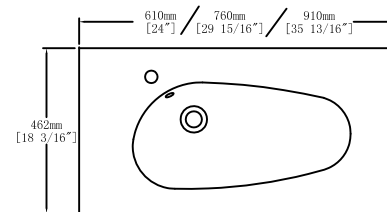
Hardware

NO.	Draw	QTY	NO.	Draw	QTY
A	 Screws Ø4x14mm	44	G	 Bracket (53x70x44mm)	2
B	 Two-in-one connector	17	H	 Bracket (19x19x35mm)	2
C	 Two-in-one connector	17	I	 Hinges	4
D	 Wood plug	4	J	 Anti-collision gasket	2
E	 Plastic anchor(Ø10mm)	4	K	 Door stopper	2
F	 Screws for fix on the wall	4	L	 Screwdriver	1

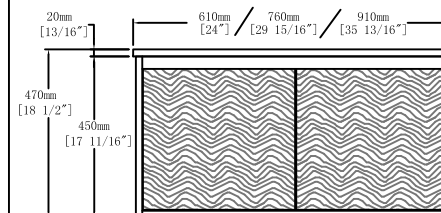
Recommended tools



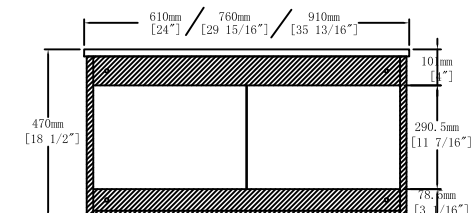
Dimensions



Top View



Front View

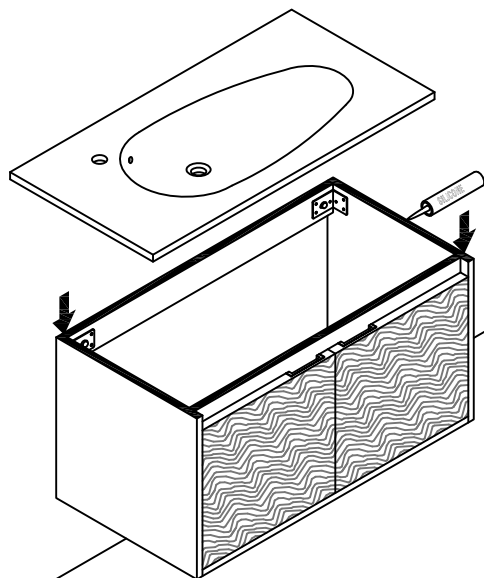


Back View

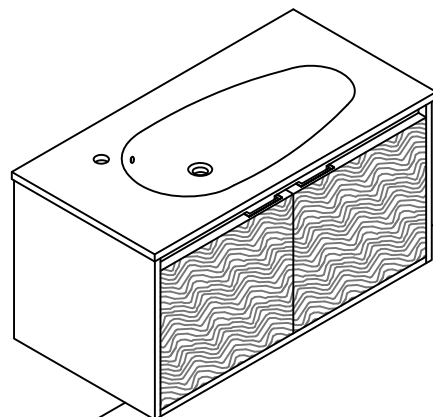
CARE CLEANING AND MAINTENANCE

- 1.Dust regularly with a soft , dry cloth.
- 2.Avoid the use of all chemicals household cleaners, abrasives, or cleaners that contain lemon, vinegar, or other acids that may damage the finish.
- 3.Excessive exposure to sunlight and extreme changes in temperature and moisture can damage wood furniture.
- 4.The sink top is resilient, but care needs to be taken to preserve its appearance.
- 5.Do not place hot appliances, such as curling irons and hot hair dryers directly on the countertop. Wipe spills immediately.

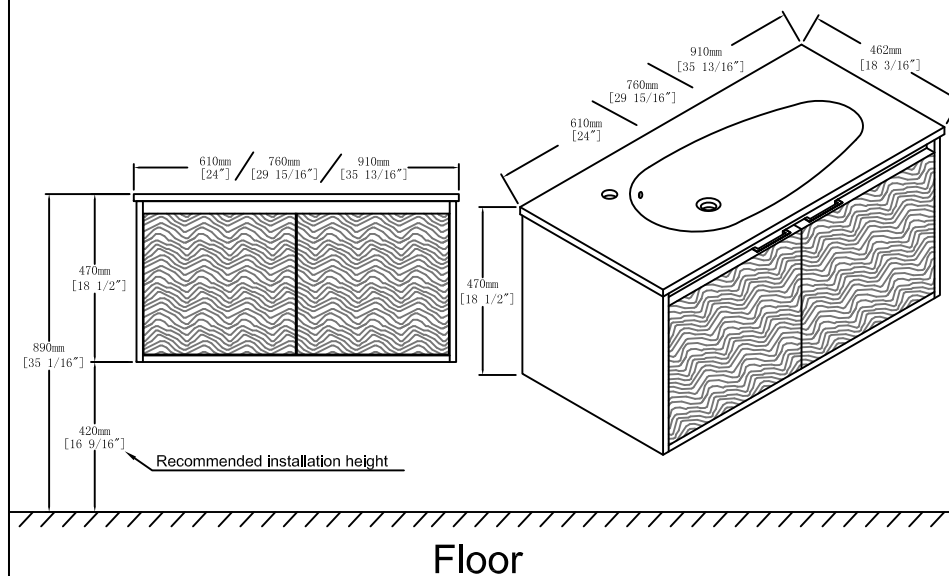
Step 13



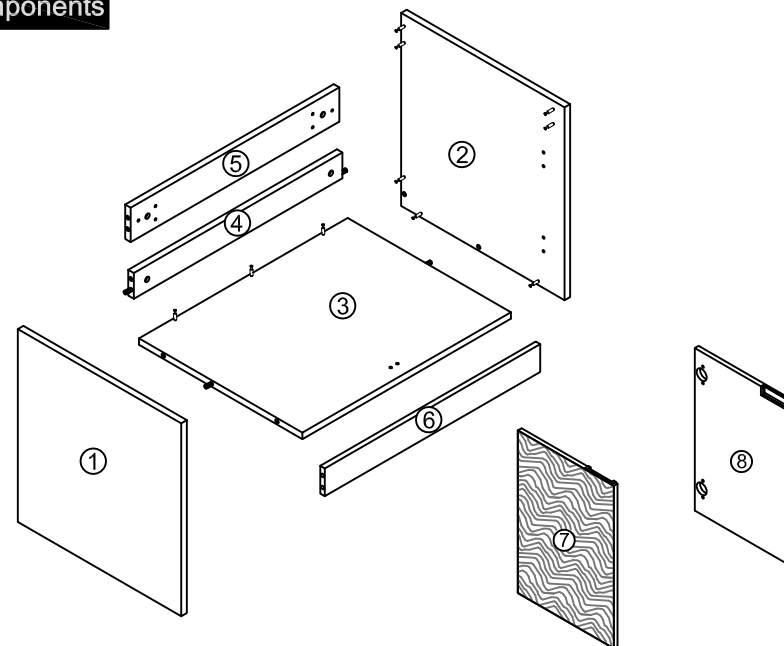
Finished



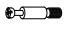

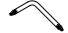
Dimensions

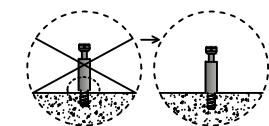
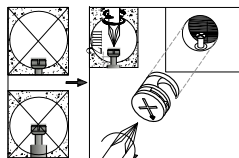
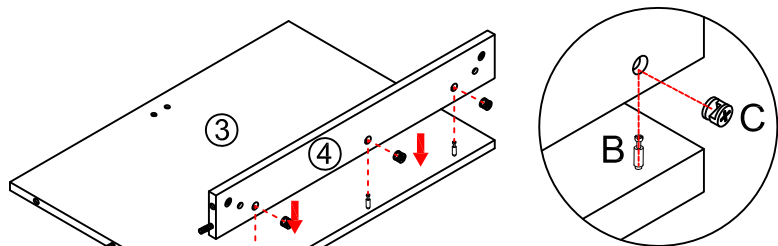


Components

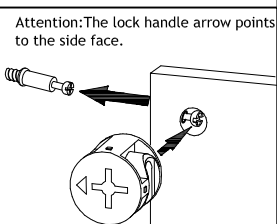


Step 1

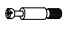


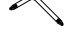
	x3
B	
	x3
C	
	x1
L	

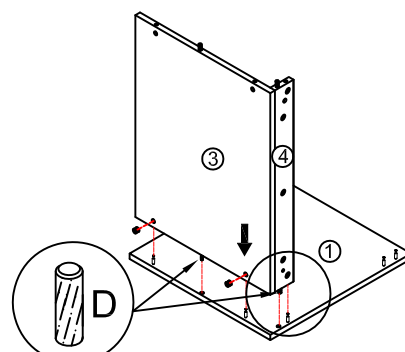
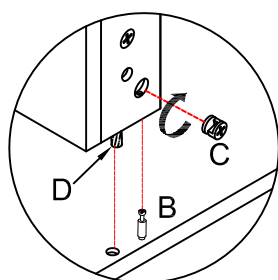


Notes: Screw installation depth as shown

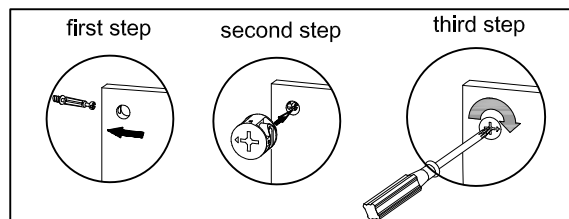
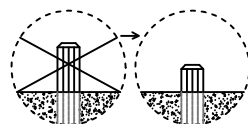


Step 2


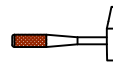
	x3
B	
	x3
C	
	x2
D	
	x1
L	

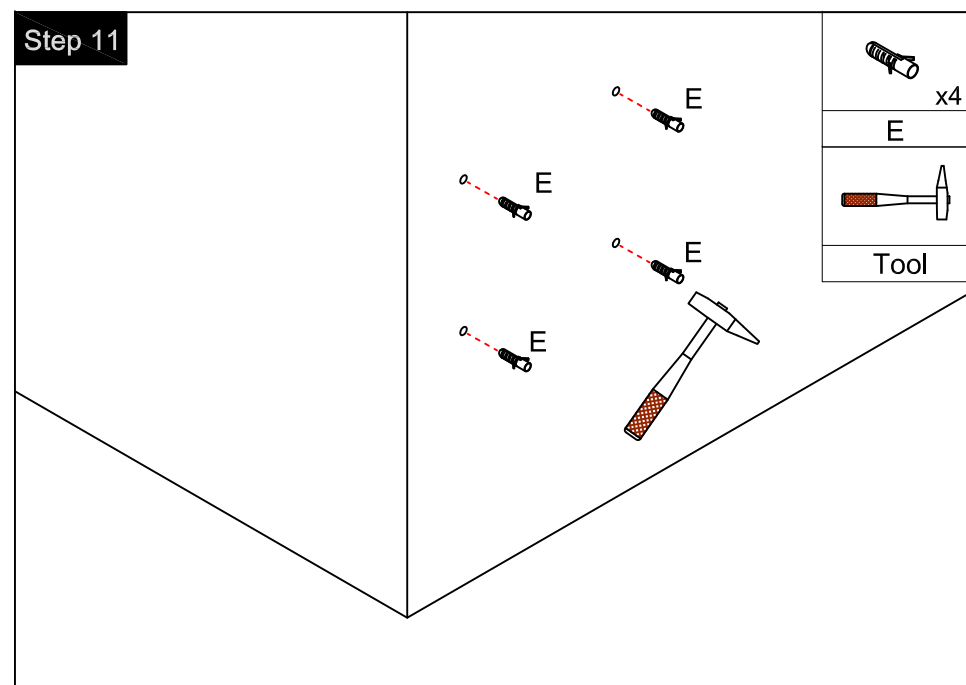


Note: The D parts are used for these two holes

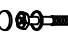



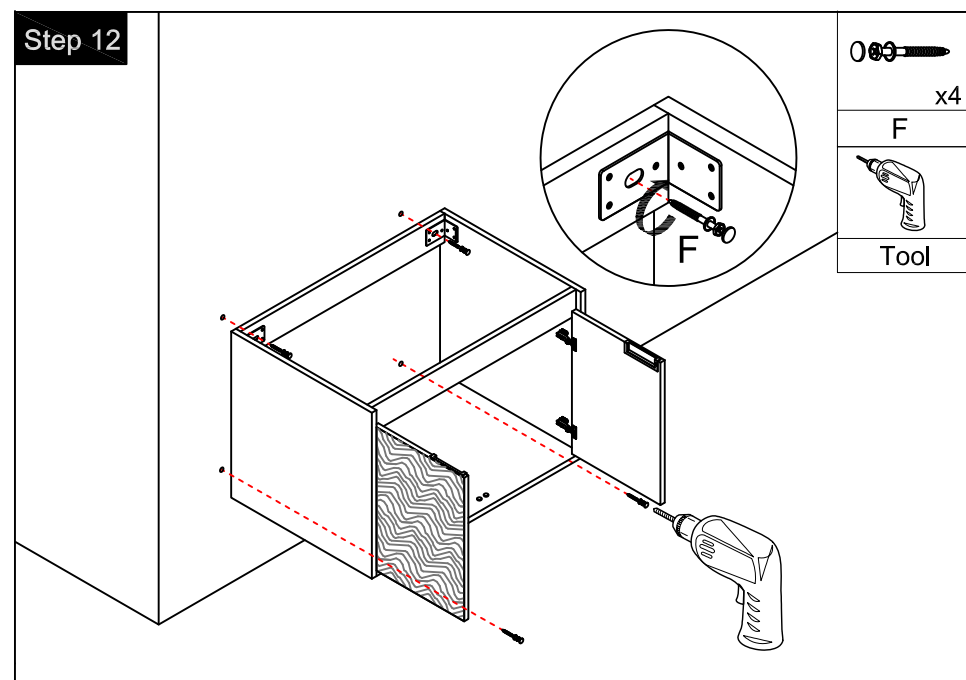
Step 11

	x4
E	
	
Tool	

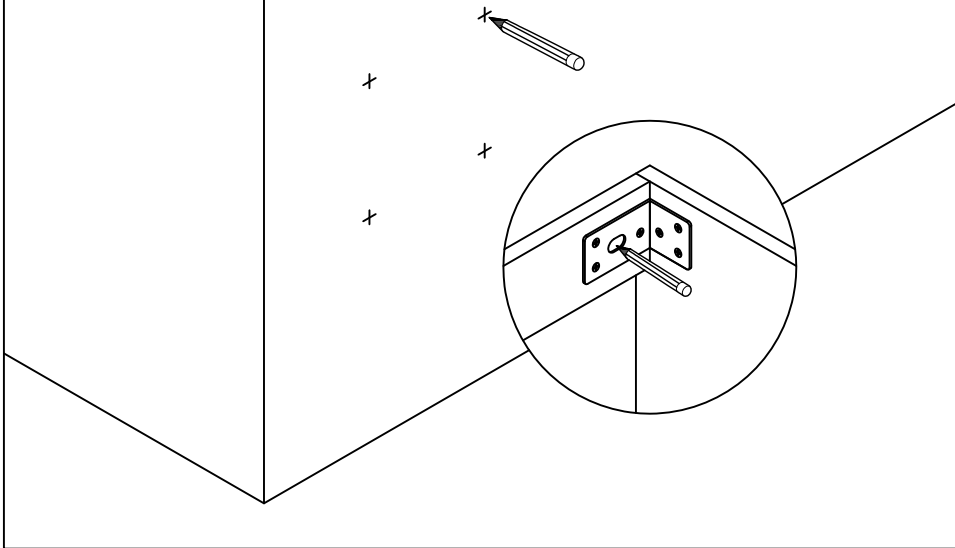


Step 12

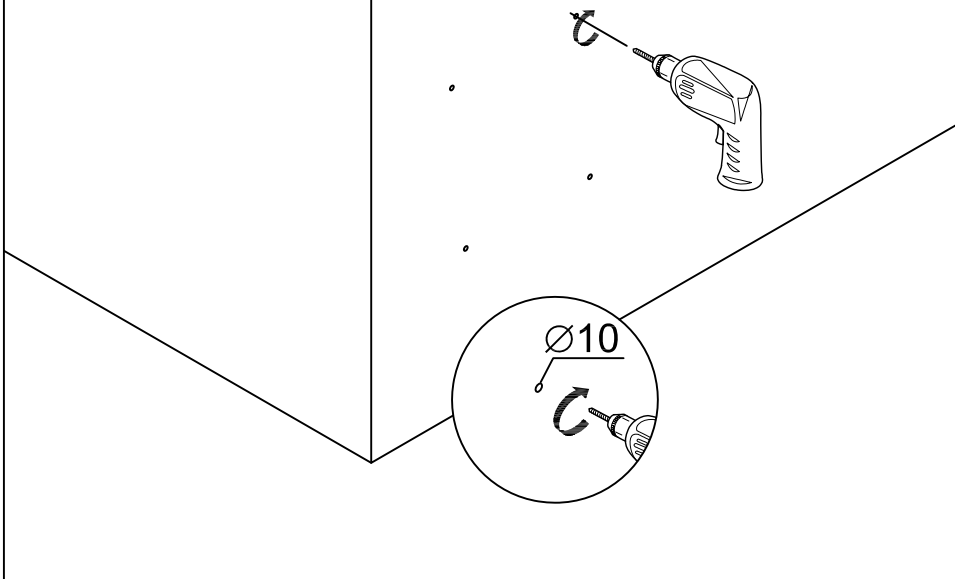
	x4
F	
	
Tool	



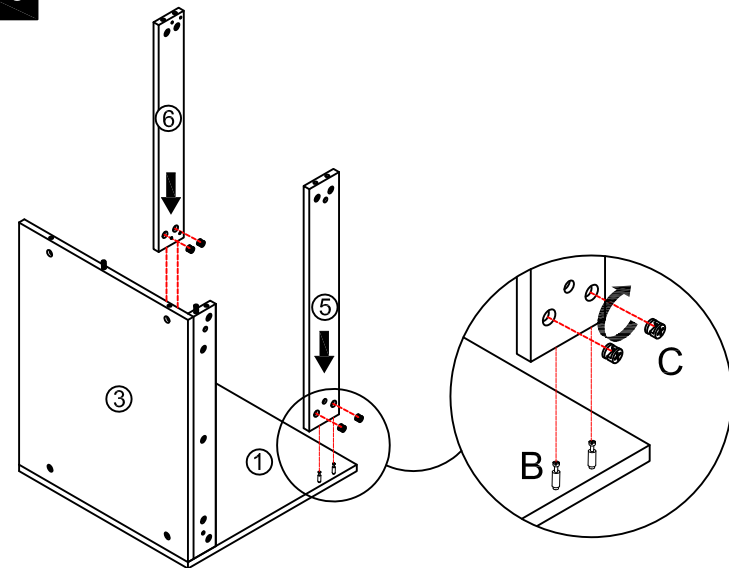
Step 9



Step 10

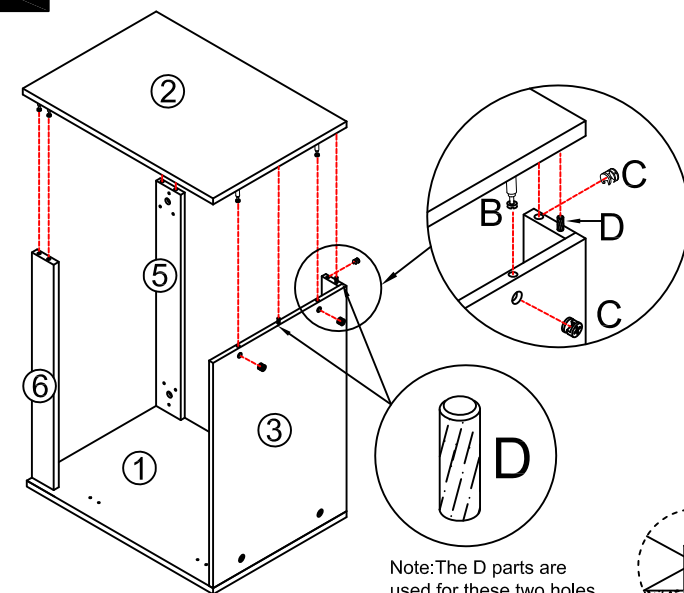


Step 3



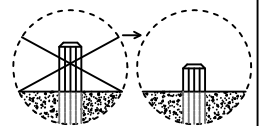
	x4
B	
	x4
C	
	x1
L	

Step 4

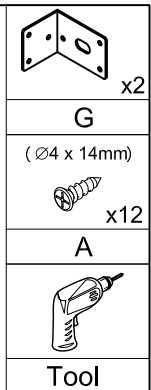
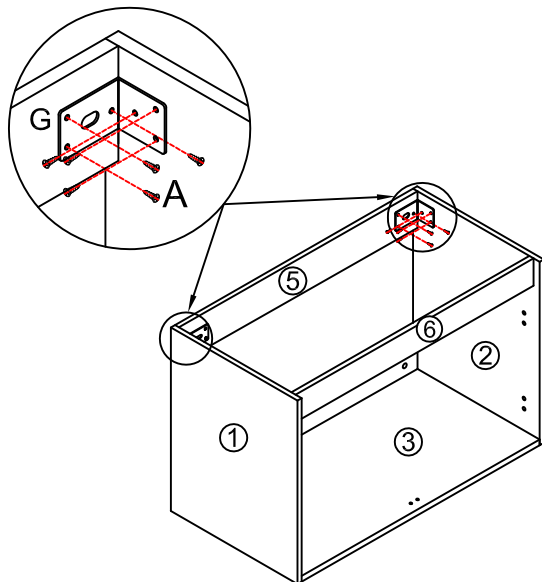


	x7
B	
	x7
C	
	x2
D	
	x1
L	

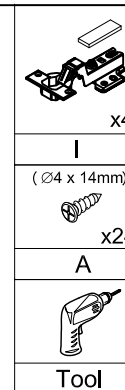
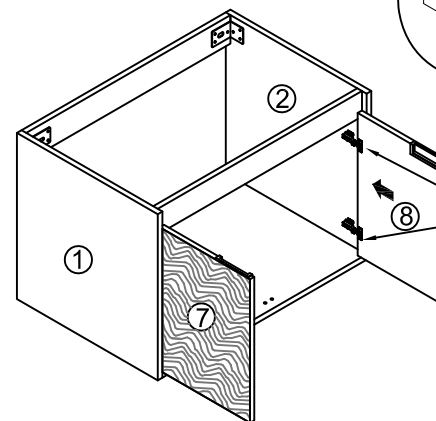
Note: The D parts are used for these two holes



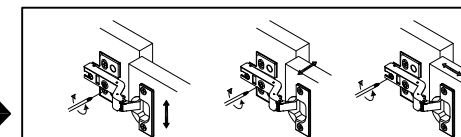
Step 5



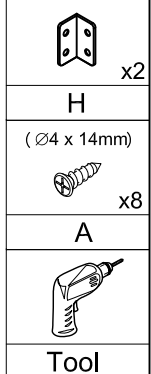
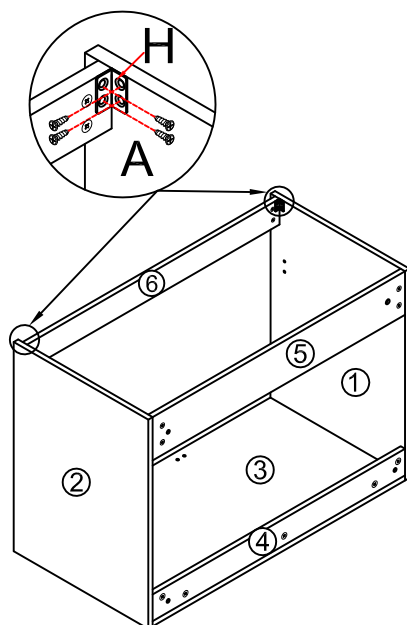
Step 7



You can adjust the doors by tightening or loosening the screws on the hinge. →



Step 6



Step 8

