



ASSEMBLY INSTRUCTIONS

Description: LANCASTER LARGE DINING TABLE





Important safety instructions:

- Please read carefully all instructions before assembly.
- For your safety and ease, assembly by two or more adults is recommended.
- Keep instructions for future use.







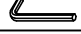


Pre-assembly:

- Do not discard any content until assembly is complete to avoid accidentally discarding small parts or hardware.
- Take out all parts and hardware from box.

Parts List

Item	Description		QTY
P1	Table top		2
P2	Stretcher Frame		1
P3	Leg Frame		2
P4	Support Table Top		2

Hardware List

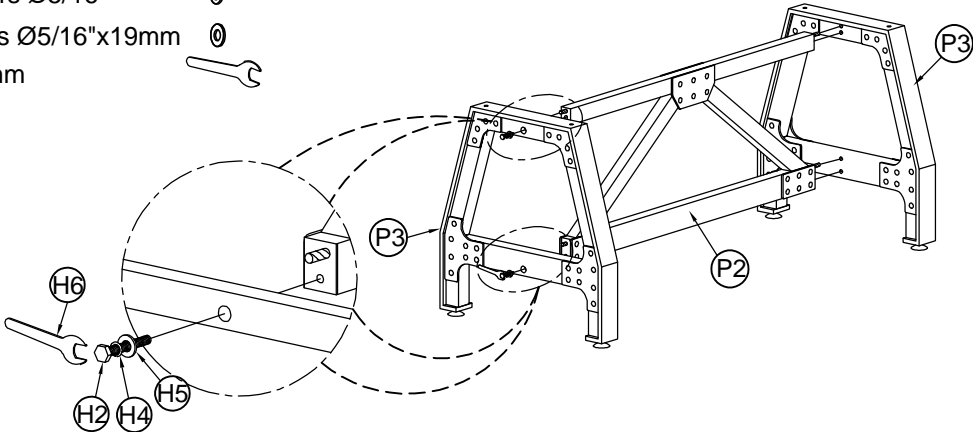
Item	Description		QTY
H1	Bolts Ø5/16"x30mm		26
H2	Hex Bolts Ø5/16"x80mm		4
H3	Bolts Ø5/16"x55mm		4
H4	Lock Washers Ø5/16"		34
H5	Flat Washers Ø5/16"x19mm		34
H6	Wrench 12mm		1
H7	Allen Key 4mm		1
H8	Large Metal Bracket		2
H9	Small Metal Bracket		1

DISCLAIMER:
WHEN PROPERLY ASSEMBLED, THIS ITEM IS SAFE FOR INTENDED USE. SELLER IS NOT LIABLE FOR ANY DAMAGES RESULTING FROM ITEM BEING IMPROPERLY ASSEMBLED AFTER PURCHASE.

Assembly Procedures:

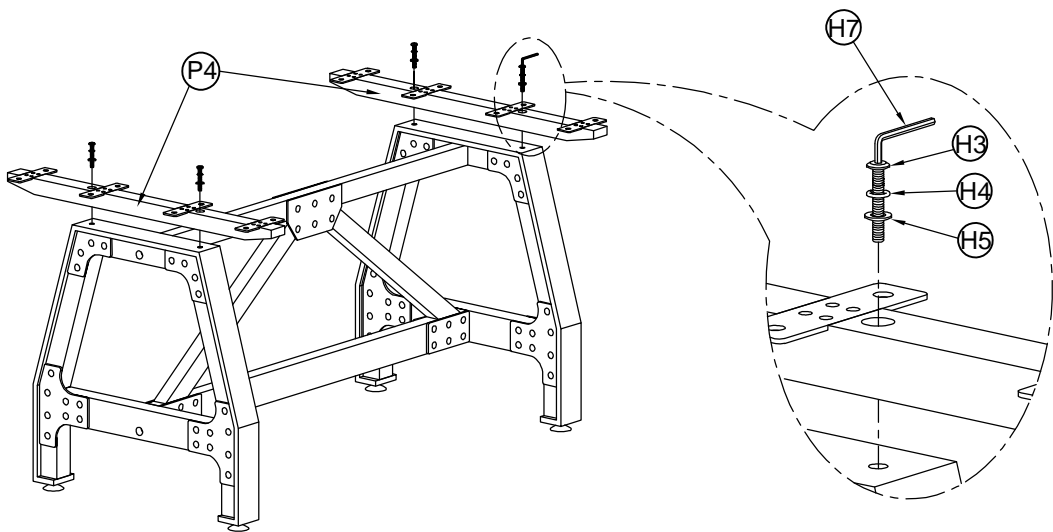
Step1: Assemble the table on a flat, soft surface such as a carpet or cloth to prevent scratching the finish.
Attach the Leg Frame (P3) to Stretcher Frame (P2) as shown below.

- (H2)x4 Hex Bolts Ø5/16"x80mm
- (H4)x4 Lock Washers Ø5/16"
- (H5)x4 Flat Washers Ø5/16"x19mm
- (H6)x1 Wrench 12mm



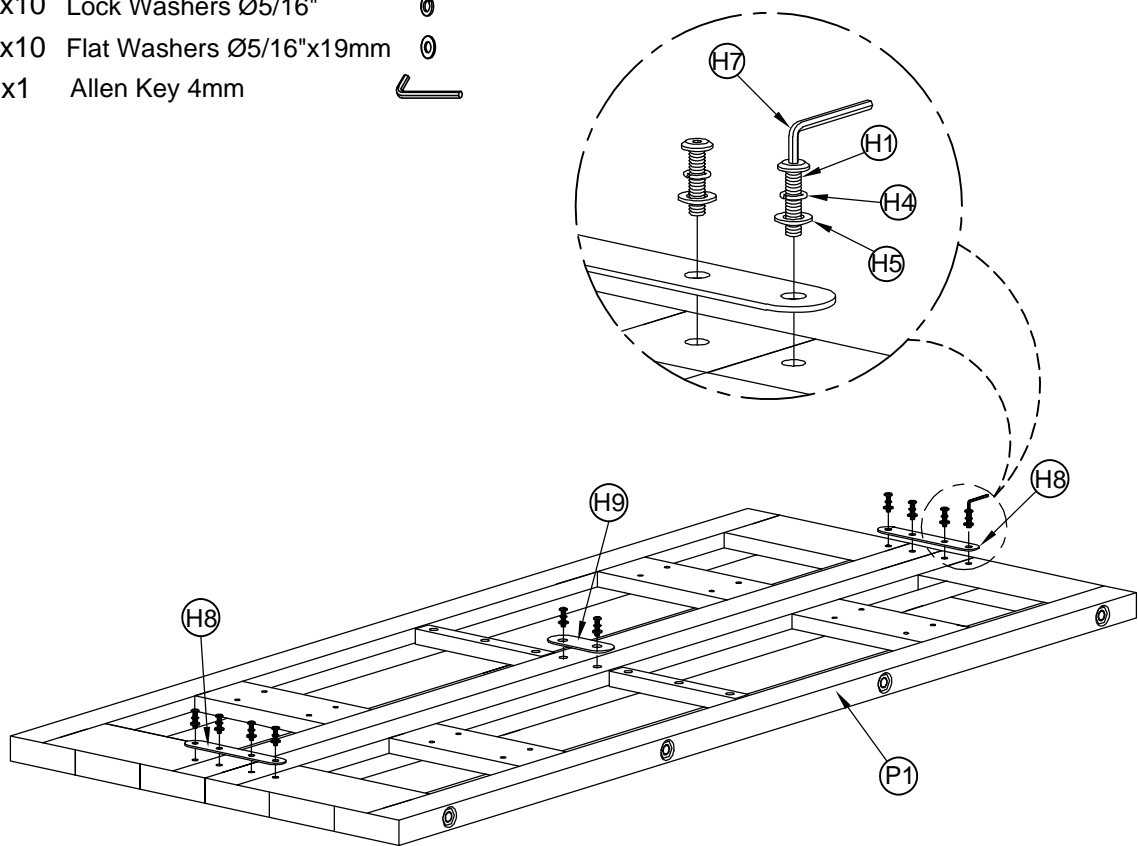
Step 2: Assemble the Support Table Top (P4) to Leg Frame (P3) as shown below.

- (H3)x4 Bolts Ø5/16"x55mm
- (H4)x4 Lock Washers Ø5/16"
- (H5)x4 Flat Washers Ø5/16"x19mm
- (H7)x1 Allen Key 4mm



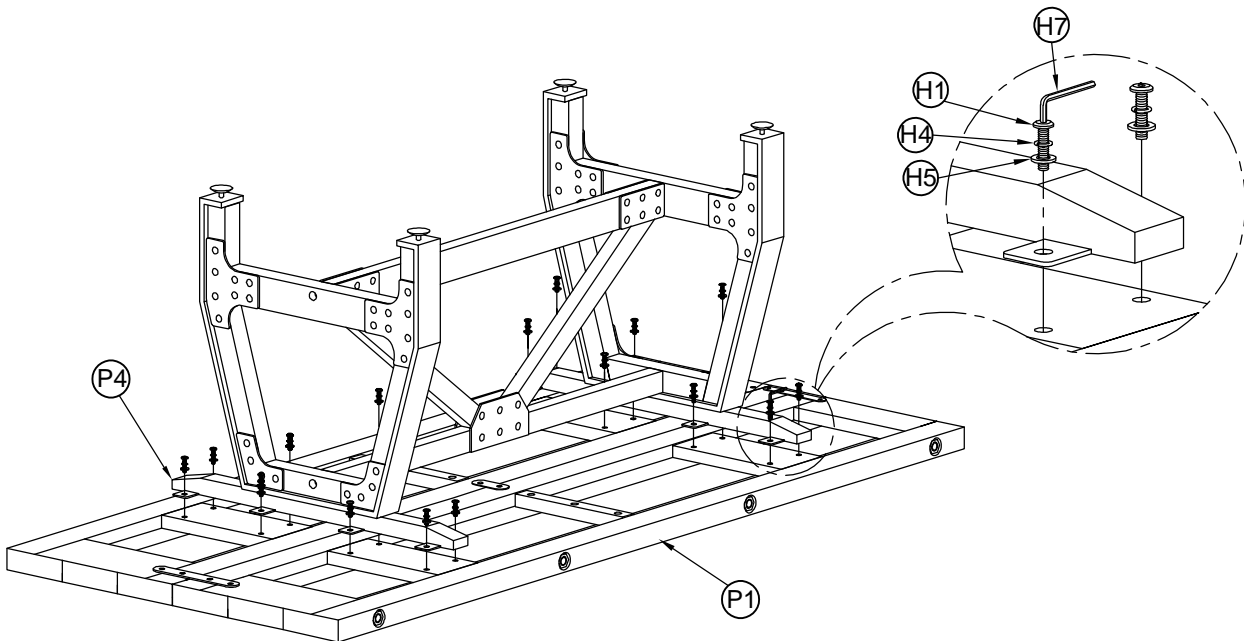
Step 3: Assemble Connecting Large Metal Bracket (H8) & Small Metal Bracket (H9) to Table top (P1) as shown below.

- (H8)x2 Large Metal Bracket
- (H9)x1 Small Metal Bracket
- (H1)x10 Bolts Ø5/16"x30mm
- (H4)x10 Lock Washers Ø5/16"
- (H5)x10 Flat Washers Ø5/16"x19mm
- (H7)x1 Allen Key 4mm

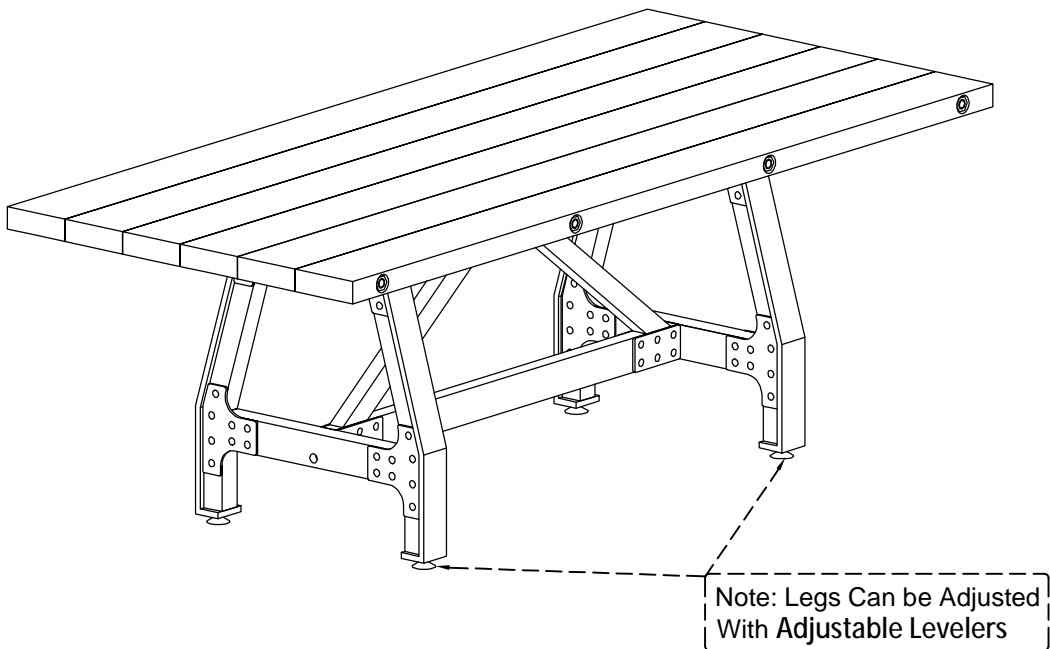


Step 4: Assemble the Support Table Top (P4) to Table top (P1) as shown below.

- (H1)x16 Bolts Ø5/16"x30mm
- (H4)x16 Lock Washers Ø5/16"
- (H5)x16 Flat Washers Ø5/16"x19mm
- (H7)x1 Allen Key 4mm



Step 5: Turn the assembled dining table to an upright position. Assembly is completed.



ADDITIONAL NOTE ABOUT SAFETY:
BOLTS MAY LOOSEN DURING NORMAL EVERYDAY USE.
THEY SHOULD BE INSPECTED AT LEAST EVERY 3 MONTHS AND RE-TIGHTENED AS NEEDED TO PREVENT DAMAGE OR INJURY,
AND ENSURE STABILITY.

Thank you for your purchase