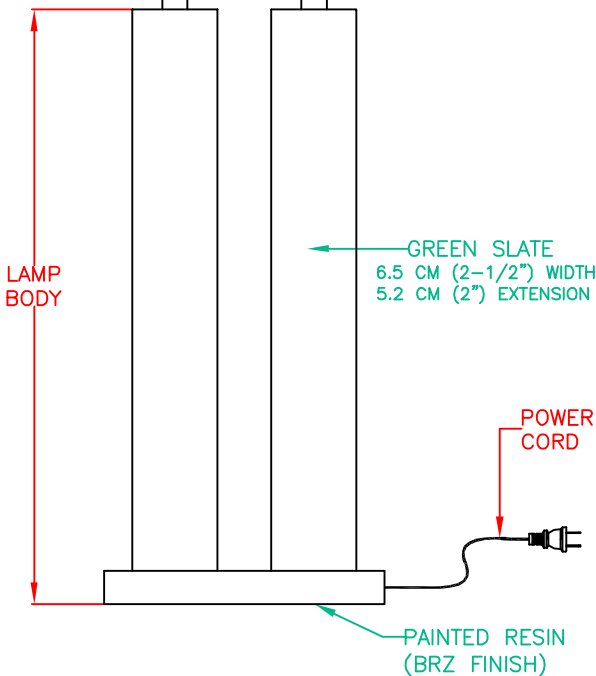
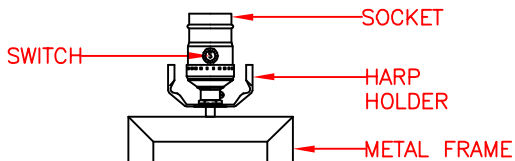
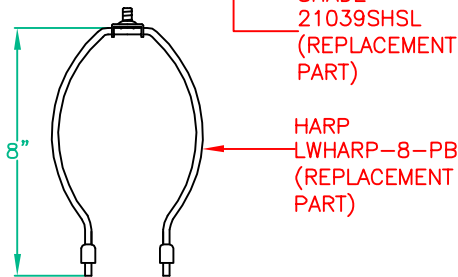
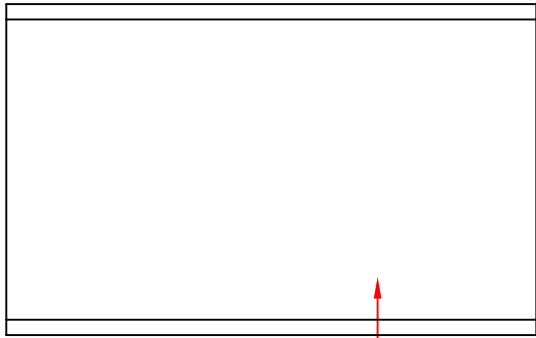
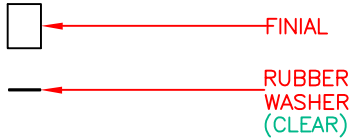


PRODUCT SPECIFICATIONS

AVAILABLE PARTS ARE:
 21039SHSL (SHADE)
 LWHARP-8-PB (HARP)



- OVERALL ASSEMBLED DIMENSIONS**
 HEIGHT: 77.2 CM (30-3/8"), WIDTH: 40.6 CM (16"),
 EXTENSION: 22.9 CM (9").
- 1 LIGHT:** UL LISTED, 150 WATT, MEDIUM BASE E-27 ALUMINUM SOCKET. 3-WAY ROTARY SWITCH. THE HARP, SADDLE, SPIDER AND SOCKET ARE PB FINISH.
- FINIAL:** PAINTED RESIN (BRZ FINISH), 2.5 CM (1") LENGTH x 1.6 CM (5/8") WIDTH x 3.5 CM (1-3/8") HEIGHT.
- SHADE:** TAN RECTANGULAR SHADE, 40.6 CM (16") LENGTH x 22.9 CM (9") WIDTH x 25.4 CM (10") HEIGHT. THE SPIDER DIAMETER IS NOT LESS THAN Ø3.5 MM. THE SHADE FABRIC CONTENT: 100% TERYLENE.
- METAL FRAME:** PAINTED STEEL (BRZ FINISH), 1.9 CM (3/4") TUBING, 12.6 CM (5") WIDTH x 5 CM (2") HEIGHT.
- LAMP BODY:** NATURAL GREEN SLATE ON SURFACE WITH RESIN BASE, 21.6 CM (8-1/2") LENGTH x 12.7 CM (5") WIDTH x 50.8 CM (20") HEIGHT. SHAPED AS SHOWN. FELT PAD INSTALLED ON BOTTOM OF LAMP BODY.
- CORD:** UL LISTED, MIN 183 CM (6 FT.) LENGTH, 18 AWG., 2 CONDUCTORS, 105°C, TYPE SPT-2, SILVER/CLEAR COLOR, COPPER MATERIAL, PLATED SILVER. WIRES MUST BE LEAD FREE.
- LABELS:** UL AND CSA OR CUL, MANUFACTURING DATE, MODEL # AND COUNTRY OF ORIGIN LABEL PROVIDED. RELAMPING LABEL FOR 150 WATT MAX. TYPE "A" 3-WAY BULB PROVIDED ON SOCKET.

PACKAGING AND SHIPPING DETAILS

- THE LAMP IS DISASSEMBLED FOR SHIPPING. EACH PART IS CAREFULLY WRAPPED IN A PLASTIC BAG AND PLACED SECURELY IN THE INNER PACKING SO IT CAN NOT MOVE AROUND DURING SHIPPING. A SMALL BAG OF SILICA IS INCLUDED IN THE PACKAGE.
- THE CARTON IS MADE OF DOUBLE WALL, CORRUGATED CARDBOARD "A MA A". BROWN IN COLOR. THE INNER PACKING IS DIE-CUT CARDBOARD OR STYROFOAM TO PROTECT AND SECURE THE LAMP AND MUST PASS THE FEDEX AND ISTA-3A DROP TEST REQUIREMENTS.
- EACH CARTON SHALL BE PRINTED WITH A LINE DRAWING AND THE KENROY HOME NAME AND LOGO, MODEL NUMBER AND FINISH, EACH CARTON SHALL BE PROVIDED A UPC LABEL. THE UPC BAR CODE AS FOLLOWS: SL=053392053949.

OTHER DETAILS

- MODEL 21039SL INSTRUCTIONS ARE TO BE PACKED WITH EACH LAMP. INSTRUCTIONS MUST BE PRINTED CLEARLY ON QUALITY PAPER.
- ALL VISIBLE PARTS, EXCEPT SHADE, MUST MATCH LAMP FINISH UNLESS OTHERWISE SPECIFIED.
- ALL BAGS MUST BE LABELED WITH OFFICIAL "THIS BAG IS NOT A TOY" STATEMENT.
- LAMP MUST REST FLAT ON SURFACE AND NOT ROCK. LAMP MUST PASS AN 8° TILT TEST.
- ASSEMBLY TIME: 5 MINUTES.
- THE UL NUMBER IS E229128.
- DIMS OF BOX: 68.6 CM (27") LENGTH x 30.5 CM (12") WIDTH x 45.1 CM (17-3/4") HEIGHT. (CUFT.: 3.33')
- NET WEIGHT: 15.4 LBS. GROSS WEIGHT: 19.4 LBS.

KENROY HOME

3723 Regent Boulevard
 JACKSONVILLE, FL. 32224
 PHONE: 904-642-4340
 FAX: 904-642-4150

THIS DOCUMENT AND THE INFORMATION THAT IT DISCLOSES IS THE EXCLUSIVE PROPERTY OF KENROY HOME. ANY REPRODUCTION OR USE OF THIS DRAWING IN PART OR IN WHOLE, WITHOUT THE EXPRESS CONSENT OF THE PROPRIETOR IS PROHIBITED. © 2010 KENROY HOME.

DATE: 5/17/2010	SCALE: NONE	DRAWN BY: JAMES
REFERENCE: BARRE TABLE LAMP	APPROVAL:	

REVISION DATE: 10/25/2012 add package drawing
REVISION DATE: 10/7/2014 add package drawing
REVISION DATE: 6/24/2015 add notes
REVISION DATE: 10/14/2016 change package drawing

MODEL #: 21039
FINISHES: SL
PAGE: 1 OF 1