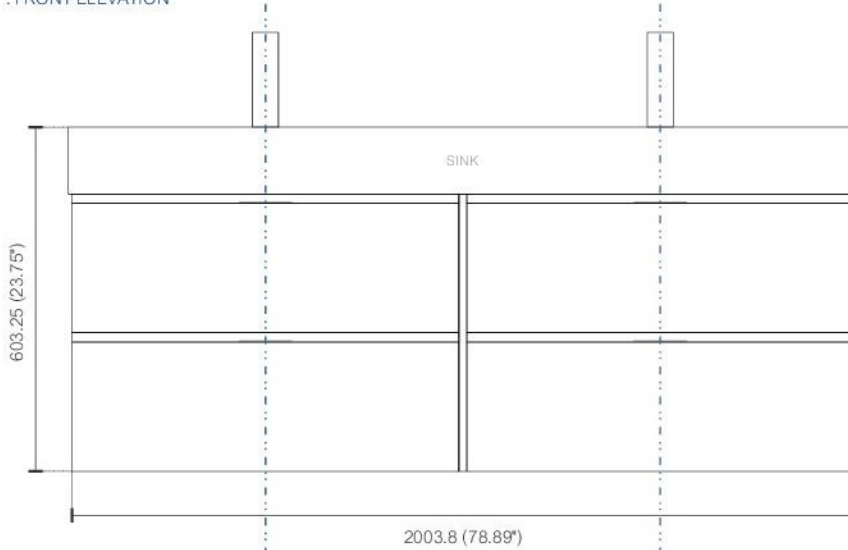


Dimensions:	width	depth	height
inches	79"	18.5"	23.75"
mm	2007	4707	603

NOTE: DIMENSIONS AND TECHNICAL DETAILS ARE SUBJECT TO CHANGE WITHOUT NOTICE

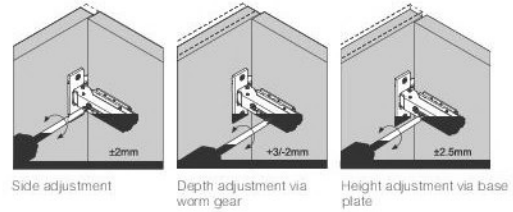
FRONT ELEVATION



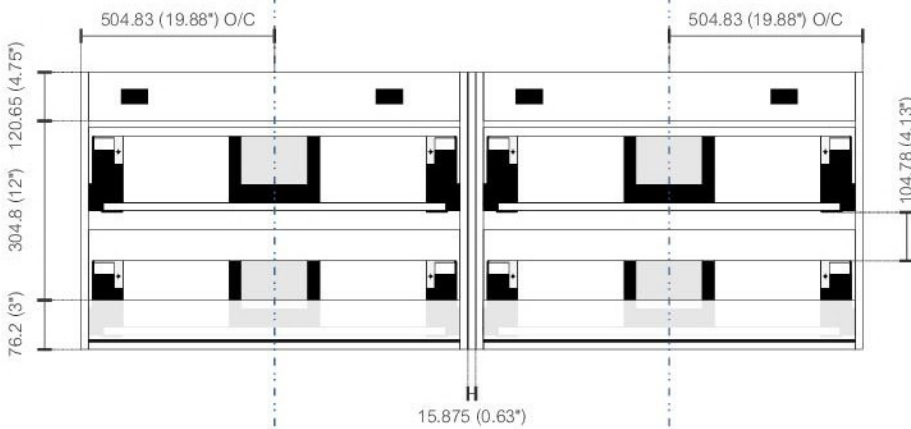
Adjustments

The options for height adjustment depend on the type of base plate. All adjustments can be made independent of one another.

For depth adjustment, select base plates have worm gear adjustment access through the hinge arm.



BACK ELEVATION



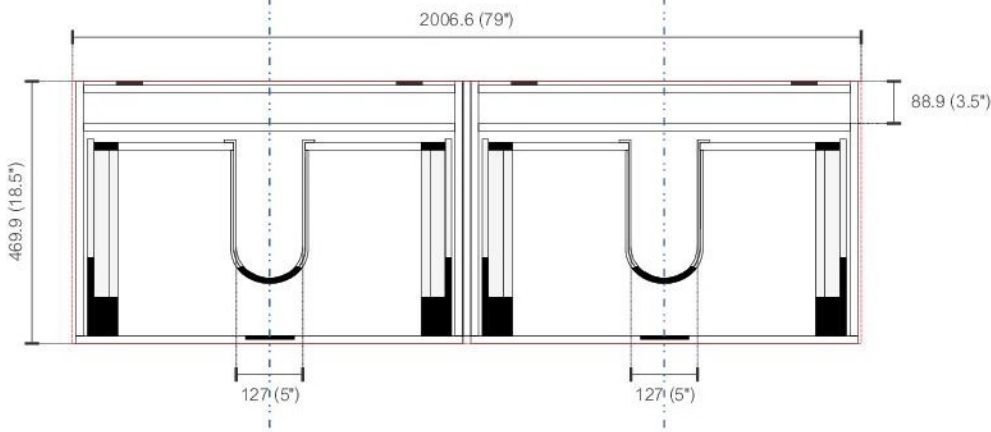
Reveal

The reveal (R) is the distance required between two doors or between the door and side wall of the cabinet to allow sufficient space for opening the door. The required reveal width (R) depends on the thickness of the door.

Most cabinet makers prefer a reveal (R) of between 3mm and 6mm.

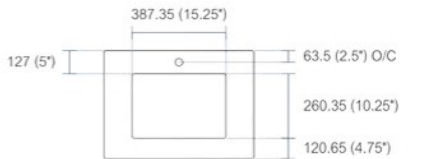


TOP ELEVATION



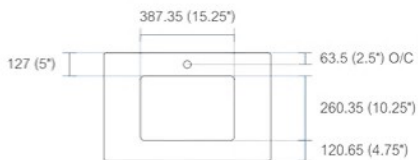
# COUNTERTOP

NOTE: DIMENSIONS AND TECHNICAL DETAILS ARE SUBJECT TO CHANGE WITHOUT NOTICE



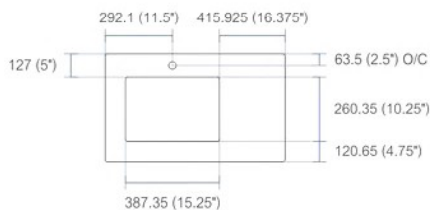
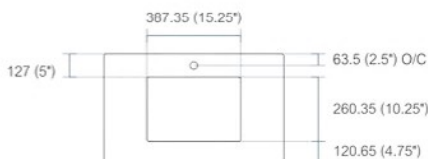
. product code

Dimensions:	width	depht	height
inches	23.75"	19.75"	0.625"
mm	603.25	501.65	15.875

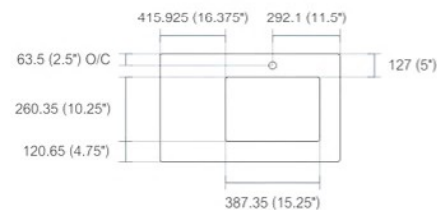


. product code

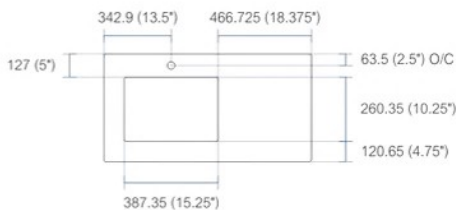
Dimensions:	width	depht	height
inches	29.125"	19.75"	0.625"
mm	739.775	501.65	15.875



. product code

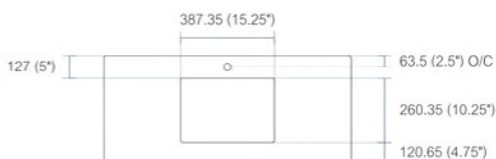


Dimensions:	width	depht	height
inches	35.5"	19.75"	0.625"
mm	901.7	501.65	15.875



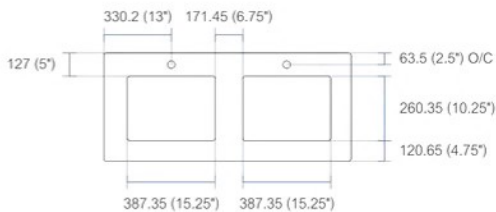
. product code

Dimensions:	width	depht	height
inches	39.5"	19.75"	0.625"
mm	1003.3	501.65	15.875



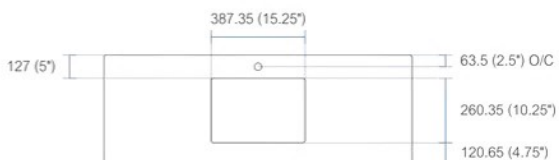
. product code

Dimensions:	width	depht	height
inches	47.25"	19.75"	0.625"
mm	1200.15	501.65	15.875



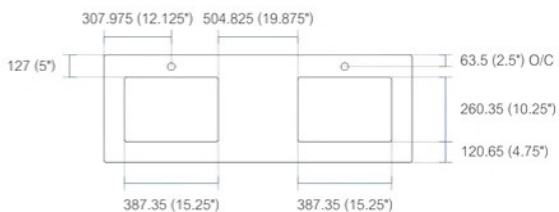
. product code

Dimensions:	width	depht	height
inches	47.25"	19.75"	0.625"
mm	1200.25	501.65	15.875



. product code

Dimensions:	width	depht	height
inches	59.125"	19.75"	0.625"
mm	1501.78	501.65	15.875



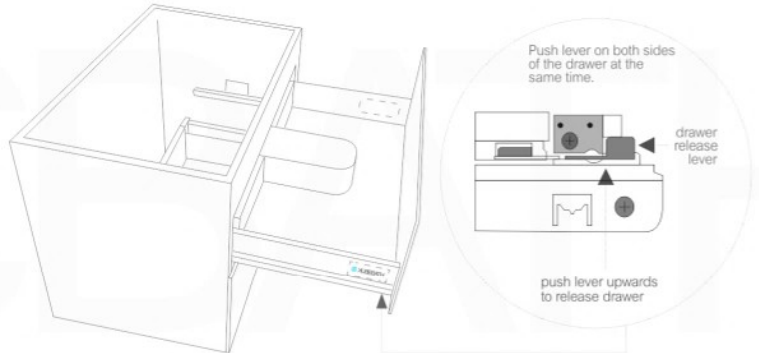
. product code

Dimensions:	width	depht	height
inches	59.125"	19.75"	0.625"
mm	1501.78	501.65	15.875

## Vanity cabinet | removing+adjusting drawers

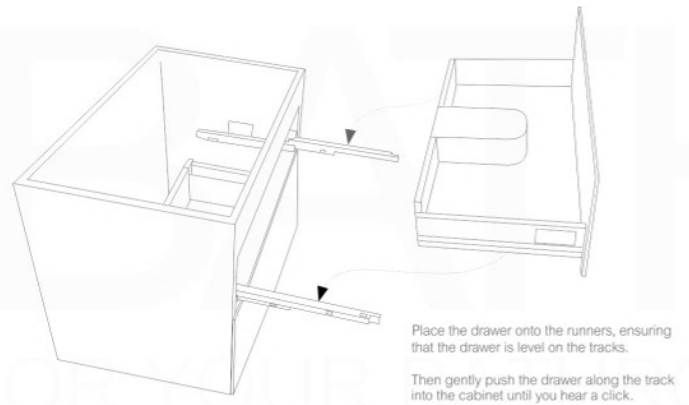
### To remove the drawer/s

- \* Extend the drawer
- \* Look for the release levers **under the drawer, on the sliding bar**
- \* To release and remove drawer, simultaneously **push the drawer release levers upwards** (both sides at the same time) and slide/lift the drawer away from the tracks.
- \* Repeat for each drawer



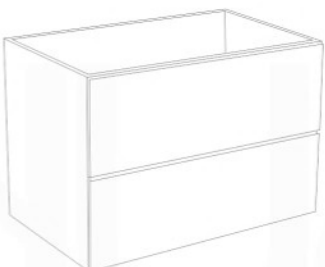
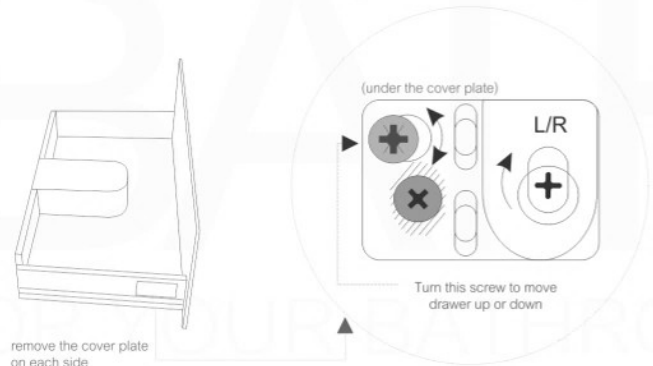
### To replace the drawer/s

- \* Fully extend the drawer runner on each side of the cabinet
- \* Place the drawer onto the runners ensuring that the drawer is levelled on the tracks, and continue to hold in place (otherwise, the drawer will fall).
- \* Keeping the drawer levelled, gently push the drawer along the runners into the cabinet until you hear a click.



### To adjust the drawer/s

- \* To move the drawer up or down, turn the side screw located under the cover plate on each side of the drawer.



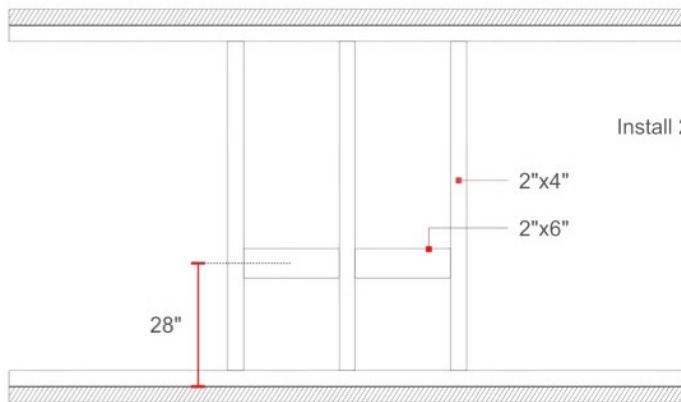
These instructions show a vanity cabinet with two drawers. However, the instructions apply to all cabinets and all sizes. The characteristics and drawer mechanisms are the same for all units.

# INSTALLATION GUIDE

## Tools Required for Assembly



## Wall Preparation



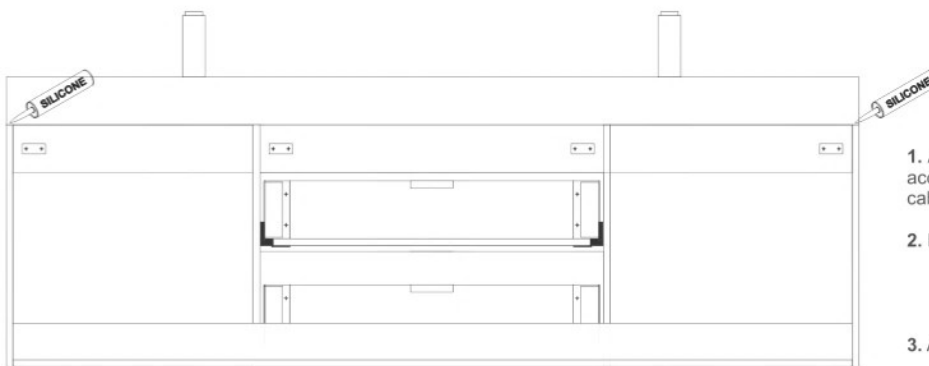
Install 2"x 6" lumber between the wall studs. Desired height: 28".

2"x4"

2"x6"

28"

## Vanity Installation



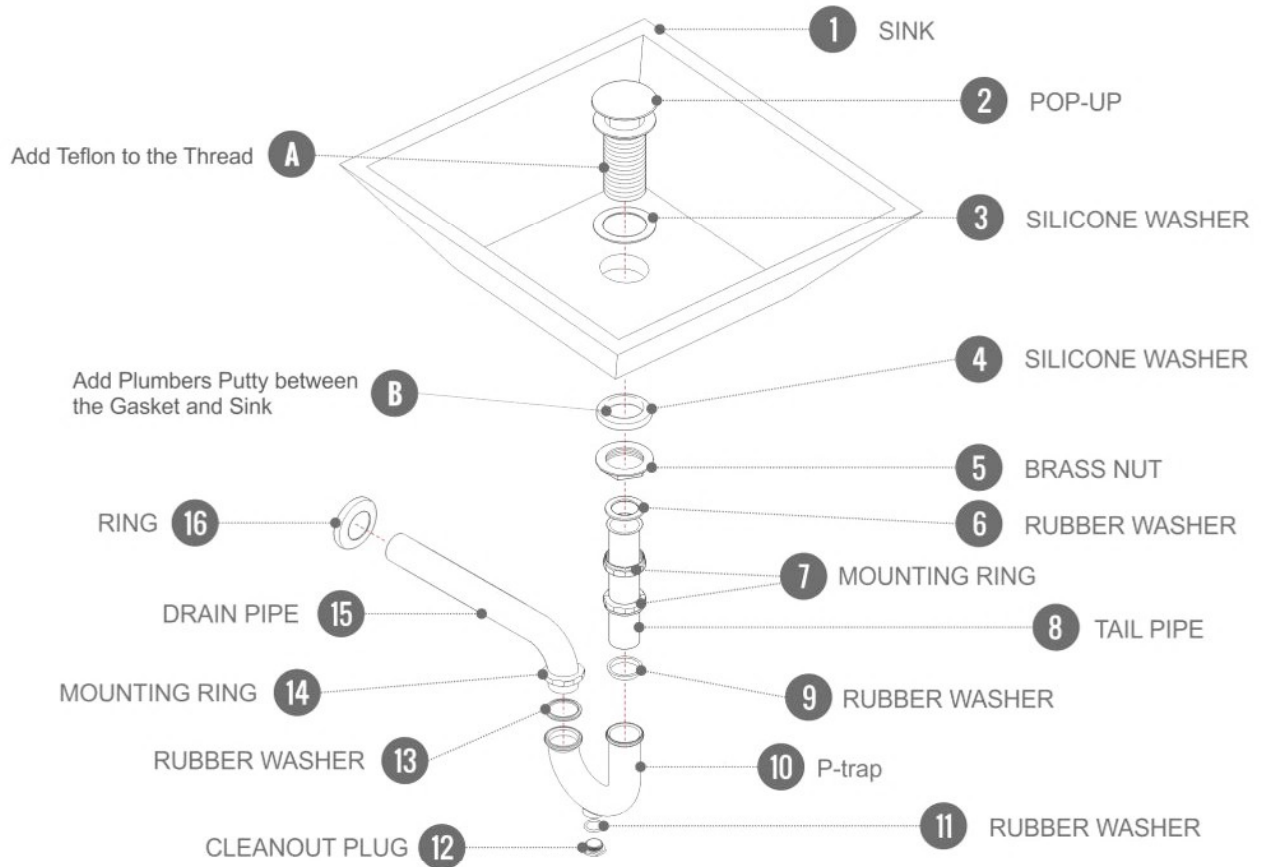
1. Align and level mounting Brackets according to horizontally reinforcement lumber and desired cabinet height.

2. Mount Vanity on to the wall brackets.

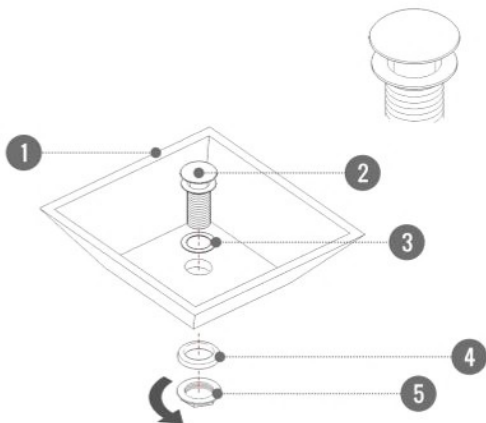
3. Add a dap of silicone to the corners of the Cabinet.

4. Gently position and align Counter top Sink onto Vanity.

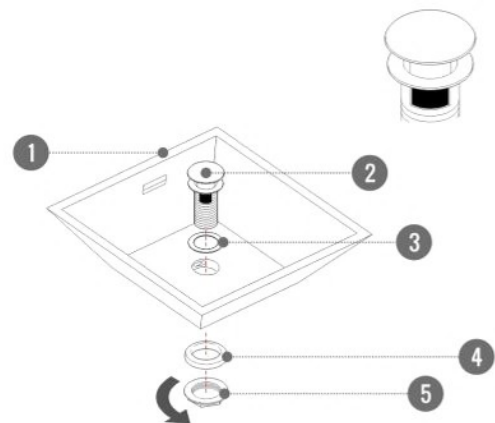
## Pop-Up / P-trap Installation Instructions INSTALLATION GUIDE



FOR SINKS WITHOUT OVERFLOW



FOR SINKS WITH OVERFLOW



OR