



**PIONEER INDUSTRIES, INC.**  
 3325 S. Garfield Ave.  
 Commerce, CA 90040  
 (800) 338-9468  
[www.pioneerind.com](http://www.pioneerind.com)

# INSTALLATION

## Tools:



## Model Number: 402XB

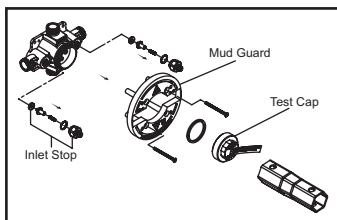


## Warnings and Notes:

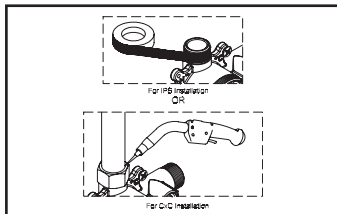
Check with local plumbing code requirements before installation.  
 This product should be installed by a local listed plumber.  
**Do not use plumbers putty on threads.**

## Installation Steps:

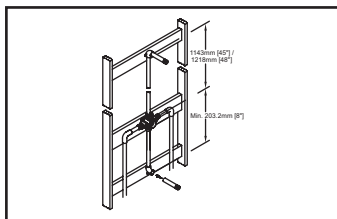
### Single Handle Pressure Balance Tub and Shower Valve Set



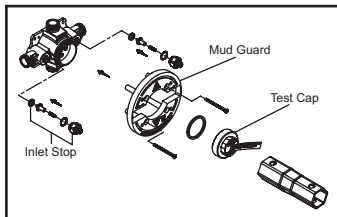
(1) For CXC installation: Remove inlet stop assemblies, mud guard plate and test cap before soldering.



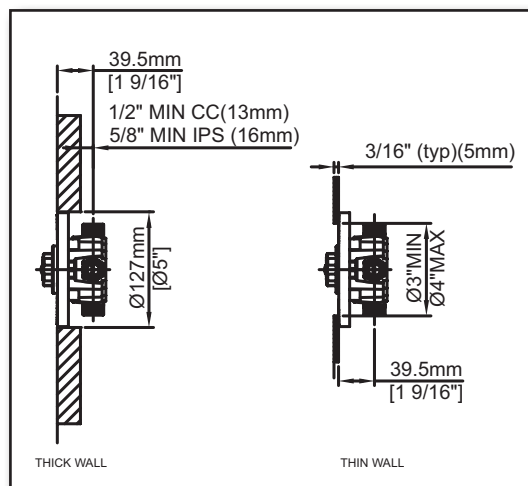
(2) Refer to installation drawing for dimension. Install inlets and outlets connection to the valve. Avoid cross flow connections. Do not install shut off valve to any of the outlets. Cap the tub port or shower port for shower only or tub only installations. For threaded connections do not overtighten.



(3) Important: Do not use PEX or CPVC between the valve and tub spout.

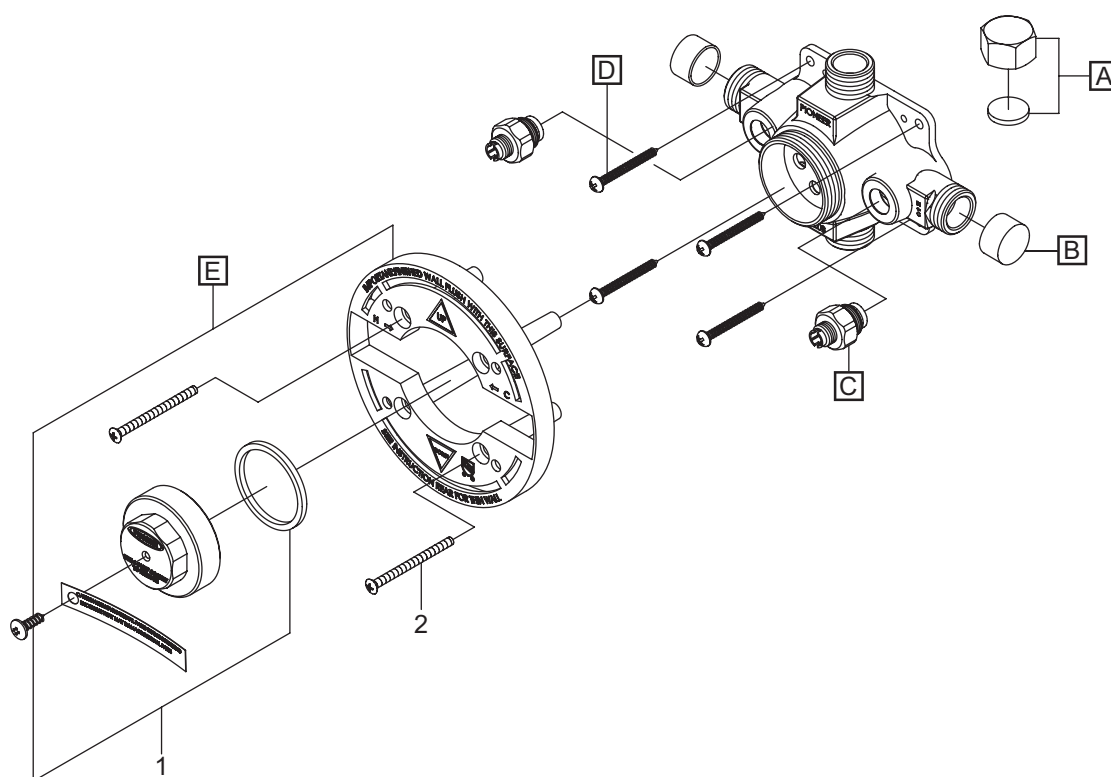


(4) For CXC installation: Once the inlets and outlets are installed. Carefully replace inlet stop assemblies, mud guard plate and test cap. Do not tighten more than 5lbs/inch<sup>2</sup> while replacing inlet stop assemblies. Overtightening may cause damage to the inlet stop assembly.



## Exploded Drawing

	ITEM #	DESCRIPTION
A	X-4900025	Cap and Washer
B	X-4400007	Protective Cover
C	X-4400075	Stop Assembly
D	X-4400076	Mounting Screws
E	X-4400077	Mud Guard Plate
1	X-4400087	Test Cap
2	X-4400013	Mud Guard Plate Screws



For more care information or trouble shooting inquiries  
about your Pioneer product, please call:  
**Pioneer Industries, Inc.** (800) 338-9468  
Monday-Friday 8AM to 8PM EST (5AM to 5PM PST)  
[www.pioneerind.com](http://www.pioneerind.com)