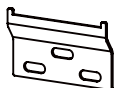


A x 1 Alfred cabinet



B x 4 Wall bracket



C x 12
Medium
size
screw



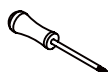
D x 8
Long
size
screw



D x 20
Anchors

*(Discard
anchors for
installation in
the USA. Use
wood re-
enforced walls
instead.)*

TOOLS REQUIRED



Phillips
screwdriver



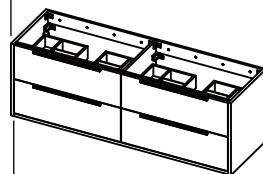
Measuring
tape



Power drill



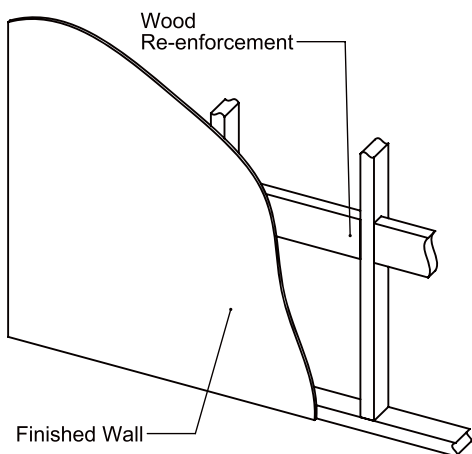
Pencil



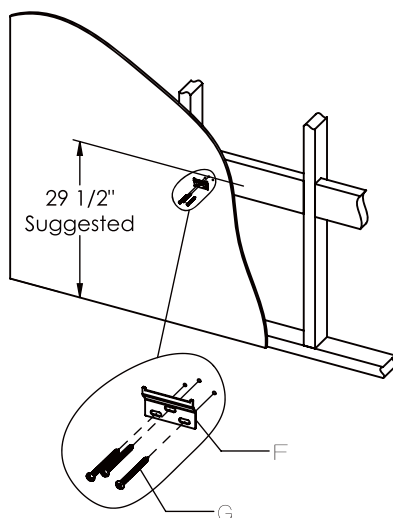
Finished view

INSTALLATION INSTRUCTIONS IC9072

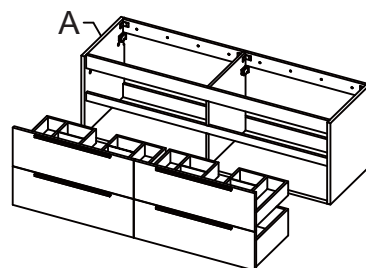
- 1** Re-enforce the wall using a sheet of plywood or 2" by 6" wood beams.



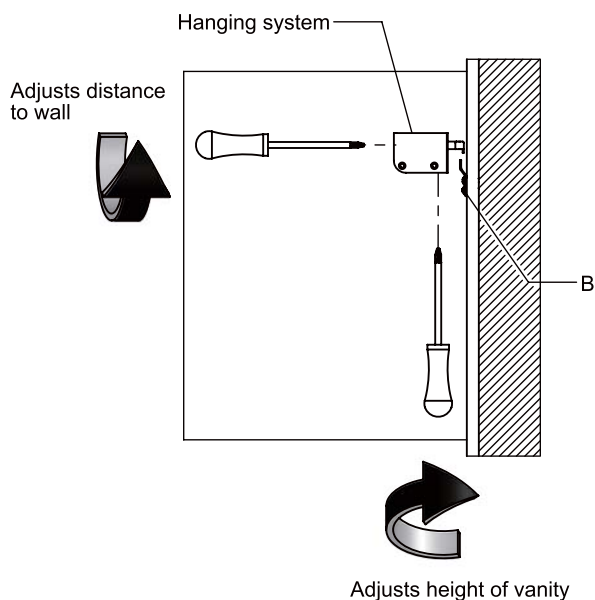
- 2** Measuring for the desired height, secure all four wall brackets (B) to the wall. Make sure that screws (C) go into the re-enforced area of the wall. 29.5" to the top screw is the recommended height.



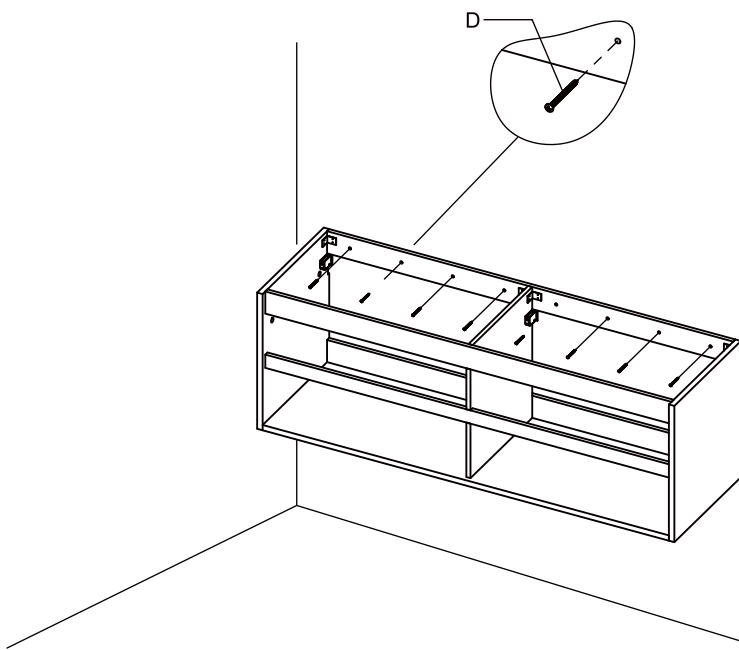
- 3** Remove drawer from **ALFRED** cabinet (A). See drawer removal below.

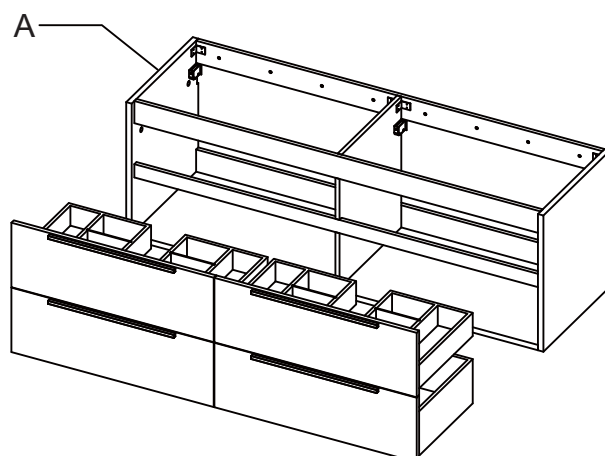


- 4** Hang cabinet (A) onto wall brackets (B) and adjust hanging system as shown below.



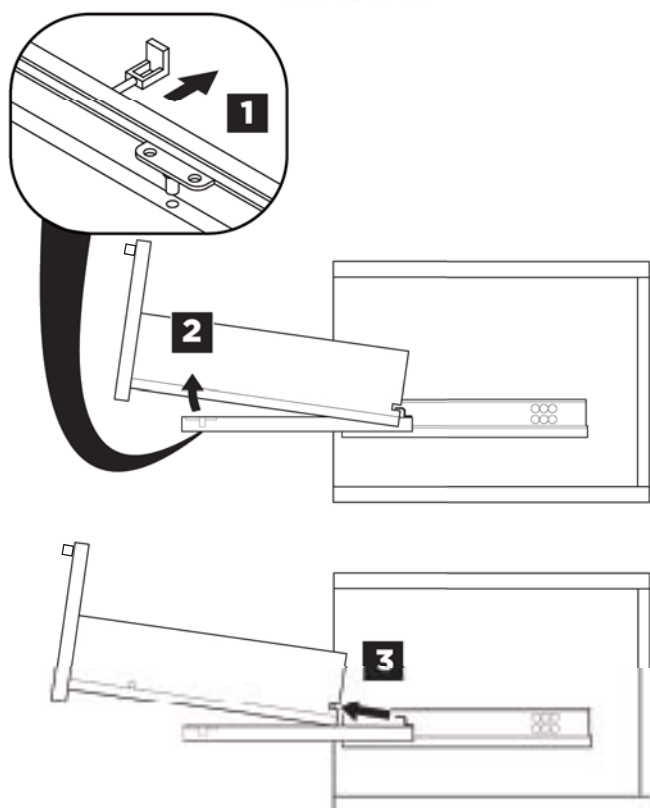
- 5** Secure cabinet (A) to the wall using long screws (D). Make sure to drive screws (D) into re-enforced area of the wall.





DRAWER REMOVAL AND INSTALLATION

REMOVAL



INSTALLATION

