

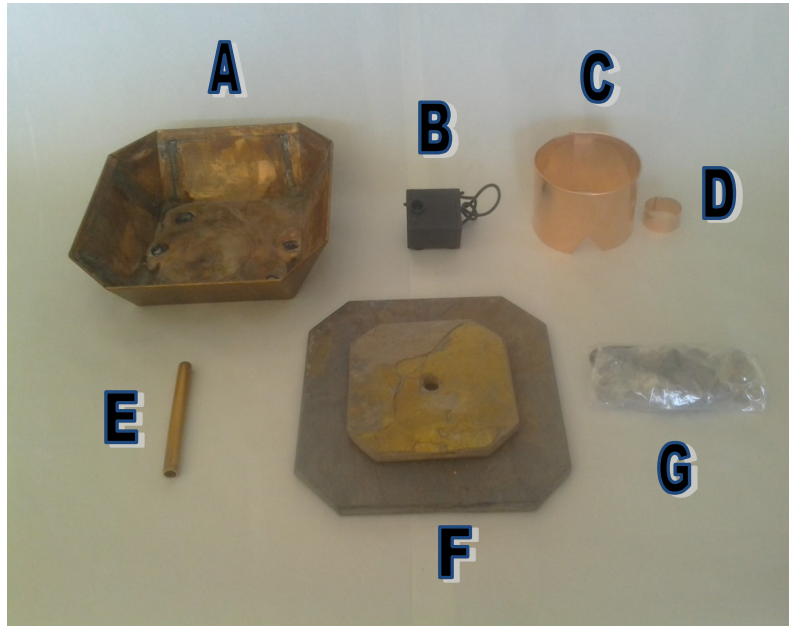
Table Rock

Instructions

Fountain Installation and Care



Parts List



Parts List:

A: Copper Base Pan

E: Disbursement Tube

B: Fountain Pump

F: Multi-Color Rajah Slate

C: Large Copper Ring

G: River Rocks

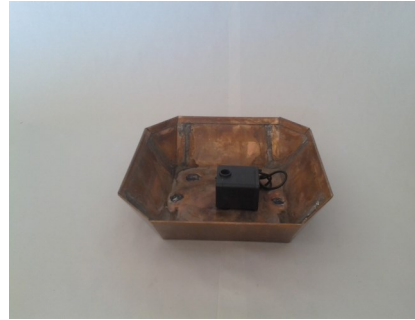
D: Small Copper Ring

Fountain Assembly

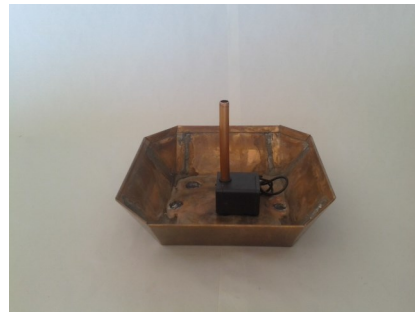
1. Carefully remove all parts from box.
2. Place Copper Base Pan (A) on a flat level surface



3. Place Pump (B) in center of pan (A)



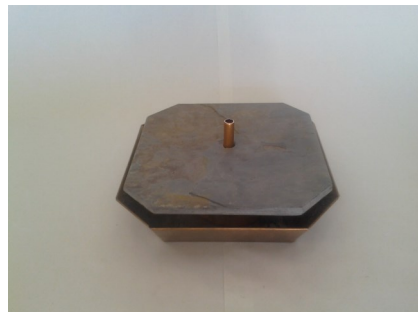
4. Place Disbursement Tube (E) in Pump (B) outlet



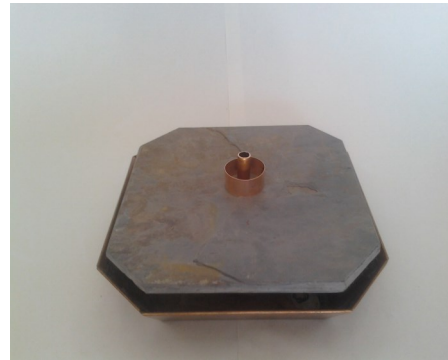
5. Place large ring (C) over pump (B) making sure the v notch is on the bottom with the pump cord running



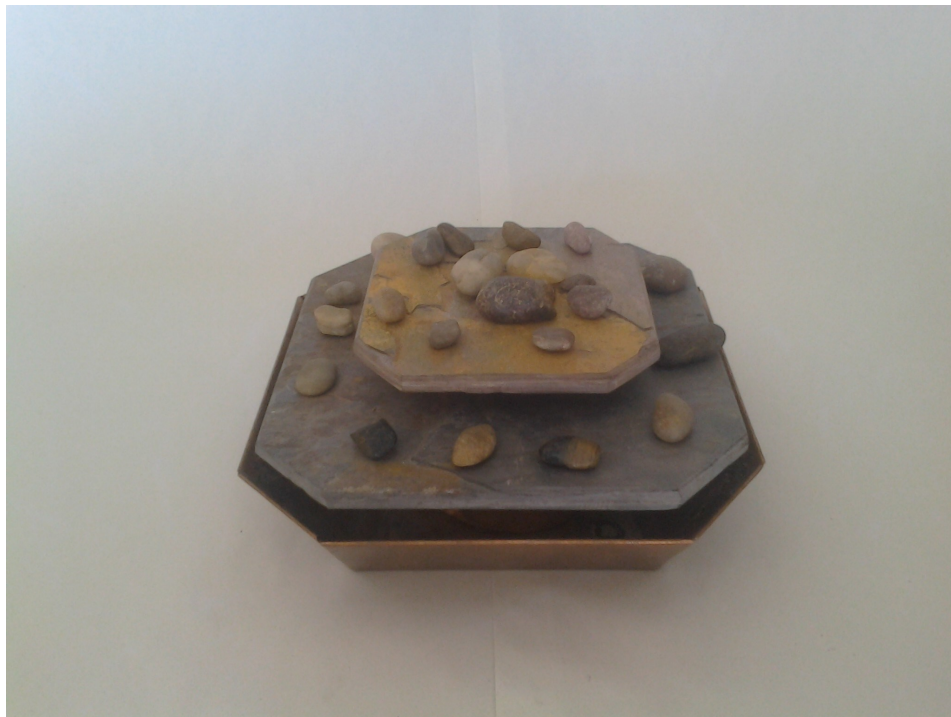
6. Place large slate (F) on top of large ring (C) with disbursement tube (E) through center



7. Place small ring (C) on large slate (F) with disbursement tube (E) through center



8. Place small slate (F) on small ring (C) with disbursement tube (E) through center, add rocks as desired.



9. Add water to base pan to 1/4" from top of pan. Plug in pump, enjoy.