

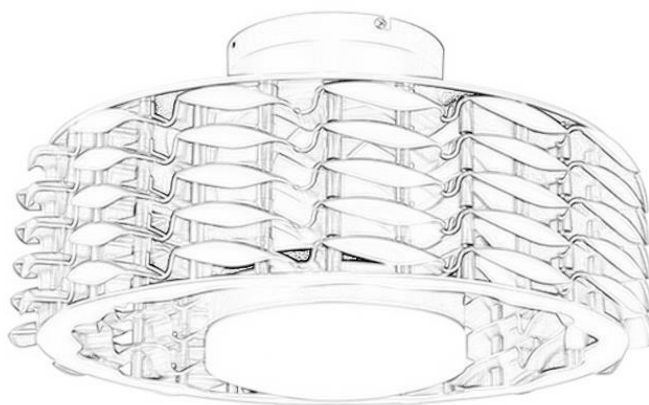
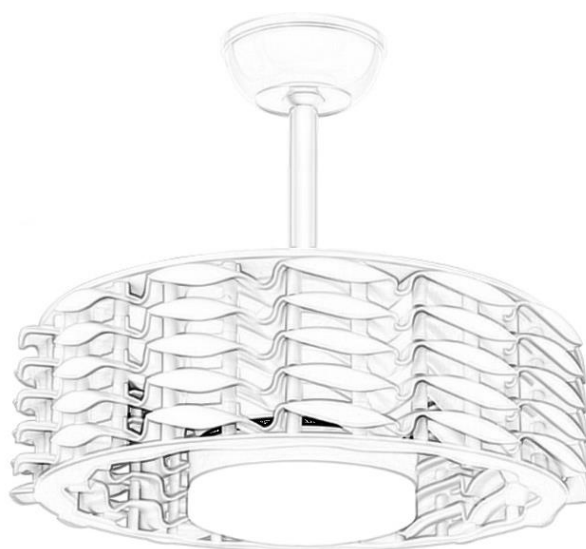


TODAYSFANS

Your Ceiling Fan Professionals

OWNER'S MANUAL

READ AND SAVE THESE INSTRUCTIONS





WARNING

WARNING: To avoid fire, shock and serious personal injury, please read the following instructions carefully.

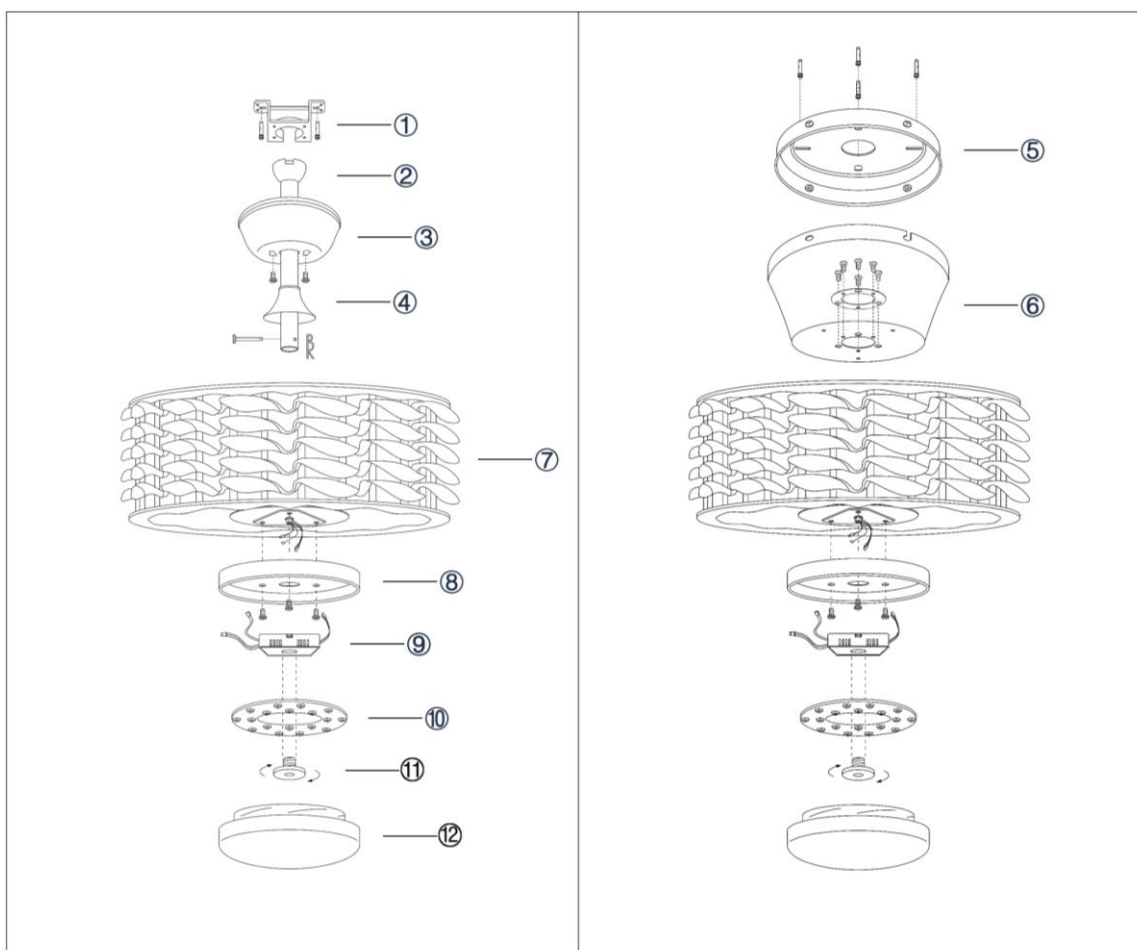
Important Safety Instructions

1. Read all instructions and safety information before installing your new fan. Review the accompanying assembly diagrams.
2. Before installing the fan, disconnect the power by removing fuses or turning off circuit breakers.
3. Make sure all electrical connections comply with local codes, ordinances, or National Electrical Codes. Hire a qualified electrician or consult a do-it -yourself wiring handbook if you are unfamiliar with installing electrical wiring.
4. Make sure the installation site you choose allows the fan blades to rotate without any obstructions. Allow a minimum clearance of 7 feet from the floor to the trailing edge of the blades.
5. If you are mounting the fan on a ceiling outlet box, use a metal outlet box. Secure the box directly to the building structure. The outlet box and its support must be able to support the moving weight of the fan (at least 50 lbs.). Do not use a plastic outlet box. Attach the mounting bracket by using the hardware supplied with the ceiling outlet box.
6. If you are mounting the fan to a joist, make sure it is strong enough to support the moving weight of the fan (at least 50 lbs.)
7. After installing the fan, make sure all the connections are secured. This will prevent the fan from falling.
8. Do not insert anything into the fan blades while the fan is operating.

Table of Contents

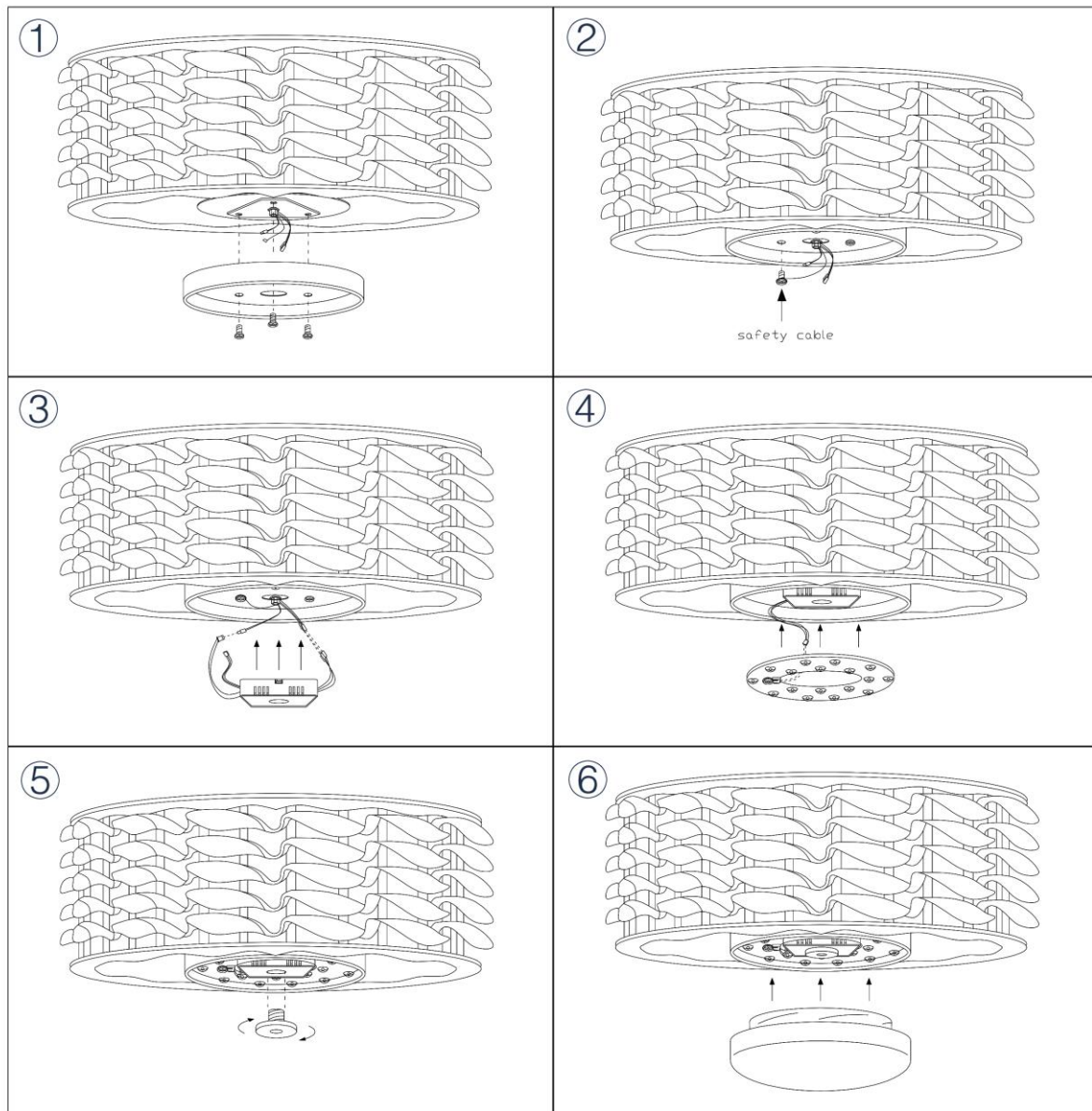
Assembly drawing & parts list.....	3/7
Installing the LED light.....	4/7
Option1: Downrod installation.....	5/7
Option2: Flushmount installation.....	6/7
Remote control instructions.....	7/7

ASSEMBLY DRAWING & PARTS LIST



Ref.	Description
1	Hanger Bracket
2	Down rod assembly (5''×1 & 10''×1)
3	Canopy
4	Coupling cover
5	Flush mount hanger bracket
6	Flush mount canopy
7	Fan body
8	Light panel
9	Receiver
10	LED light
11	Cap
12	Lamp shade
13	Screws bag×2

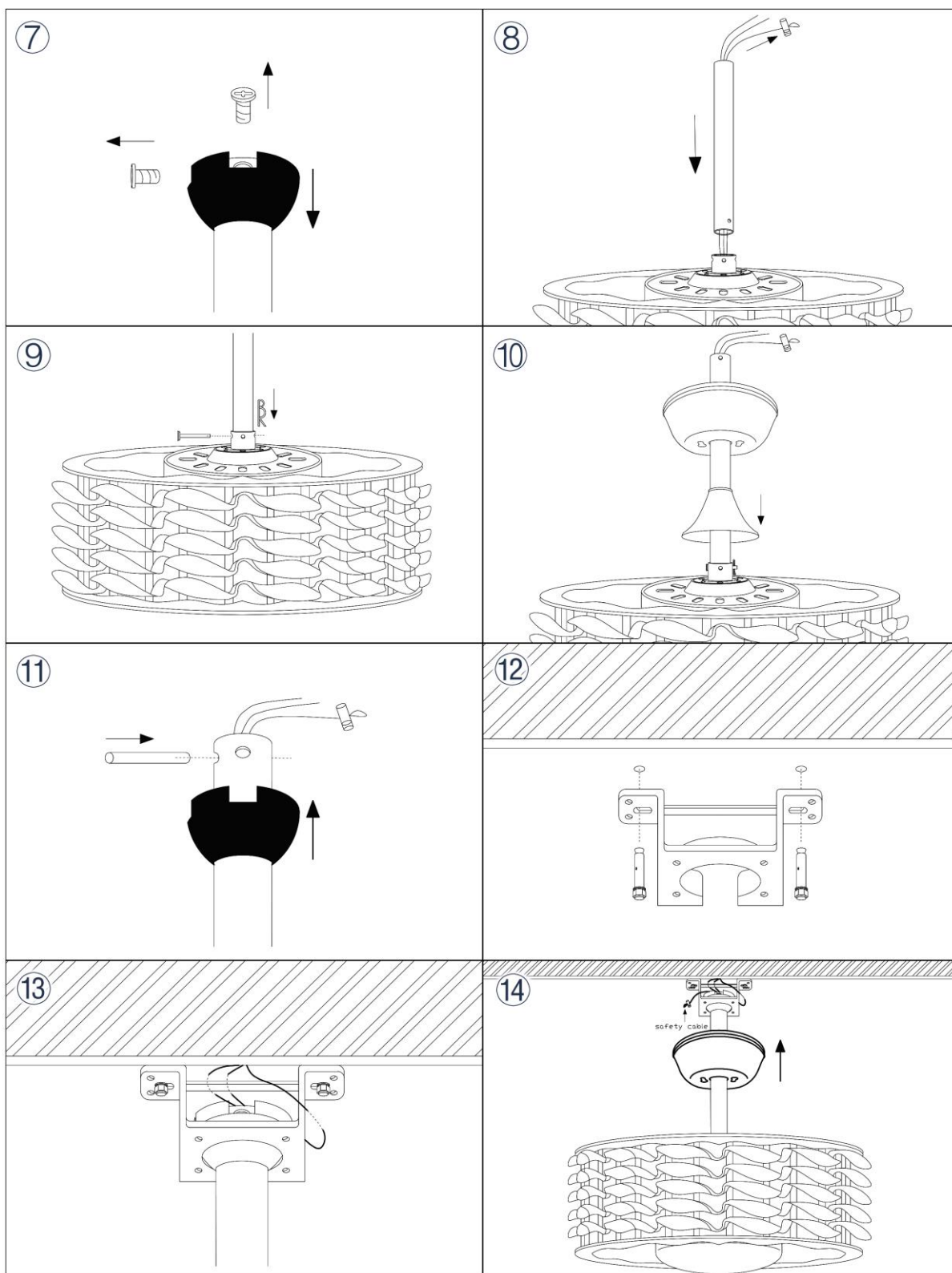
Installing the LED light



Please note:

- ② Secure safety cable with screw.

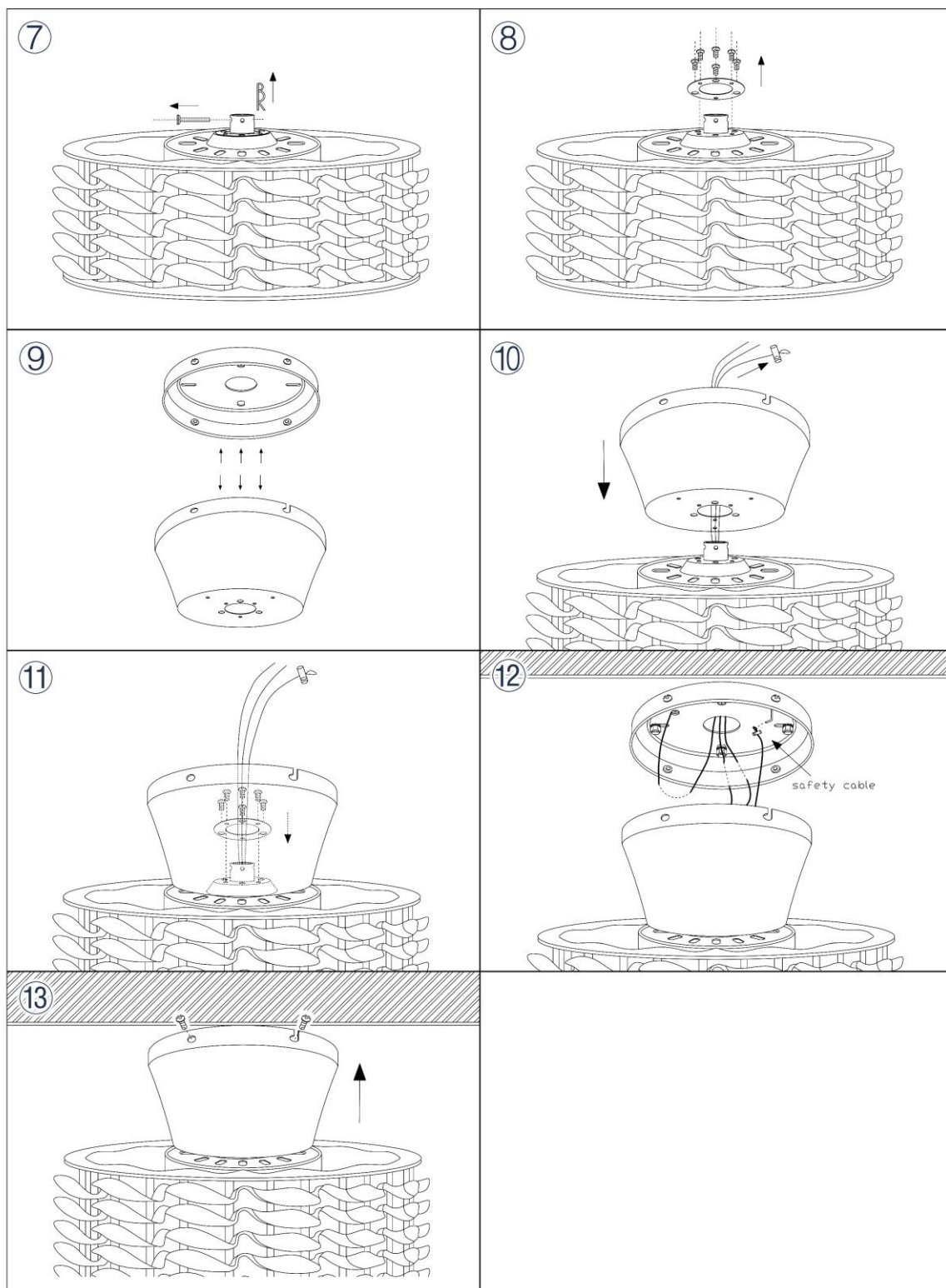
Option1: Downrod Installation



Please note:

- ⑭ Secure the safety cable to the bracket with one of the screws.
Brown Wire = Live; Blue Wire = Neutral ; Green / Yellow Wire = Ground.

Option2: Flushmount Installation



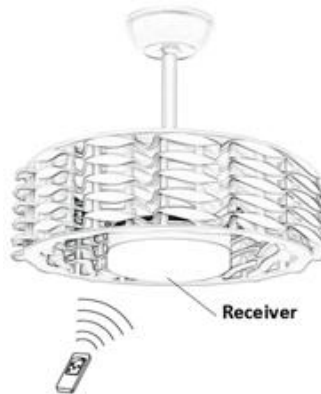
Please note:

⑫ Secure the safety cable to the bracket.

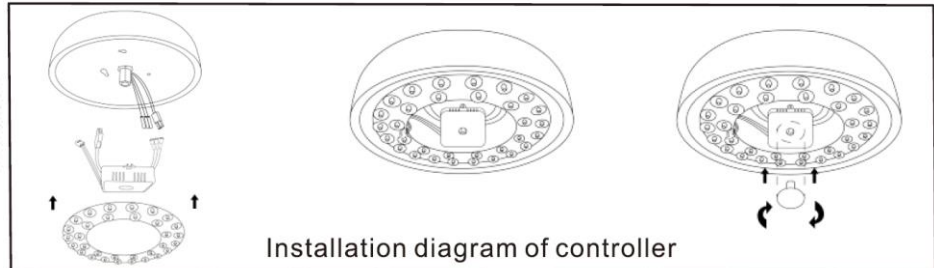
Brown Wire = Live; Blue Wire = Neutral ; Green / Yellow Wire = Ground.

Remote Control Instructions for Oceano Bladeless Ceiling Fan

Power Specifications:

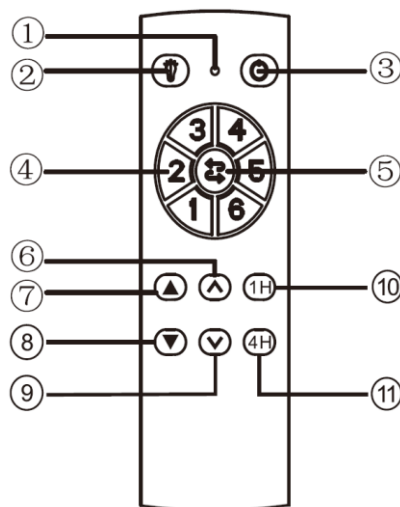


Voltage	Fan	Lamp
110-240V	40W	25 W



- The remote can control the fan as long as it is within 32 ft, there is no need to point the remote at the fan.

Remote Functions:



1. Indicator Light
2. Light ON/OFF
3. FAN ON/OFF
4. Fan Speed (1 (low) – 6 (high))
5. Fan Direction (Reverse Switch)
6. Light Color Temperature increase
7. Light Brightness Increase
8. Light Brightness decrease
9. Light Color Temperature decrease
10. Timer (stops fan after 1 hour)
11. Timer (stops fan after 4 hours)

IMPORTANT:

1. In order for the remote to work, it must be properly synced with the fan. In order to do that, turn on the main power breaker and within 30 seconds press the Fan ON/OFF button for 5 seconds. If the sync was successful, you should hear a long "beep".
2. Please make sure the batteries in the remote are new and inserted correctly with the positive and negative sides in the correct direction.
3. If the remote is not controlling the fan correctly or if the fan is turning on/off by itself, please check if there are other remote-controlled devices nearby that may be affecting your fan.
4. When the batteries are low on power, the indicator light will begin to flash, signaling it is time to change the batteries.
5. Please remove the batteries from the remote when it will not be used for an extended period of time.