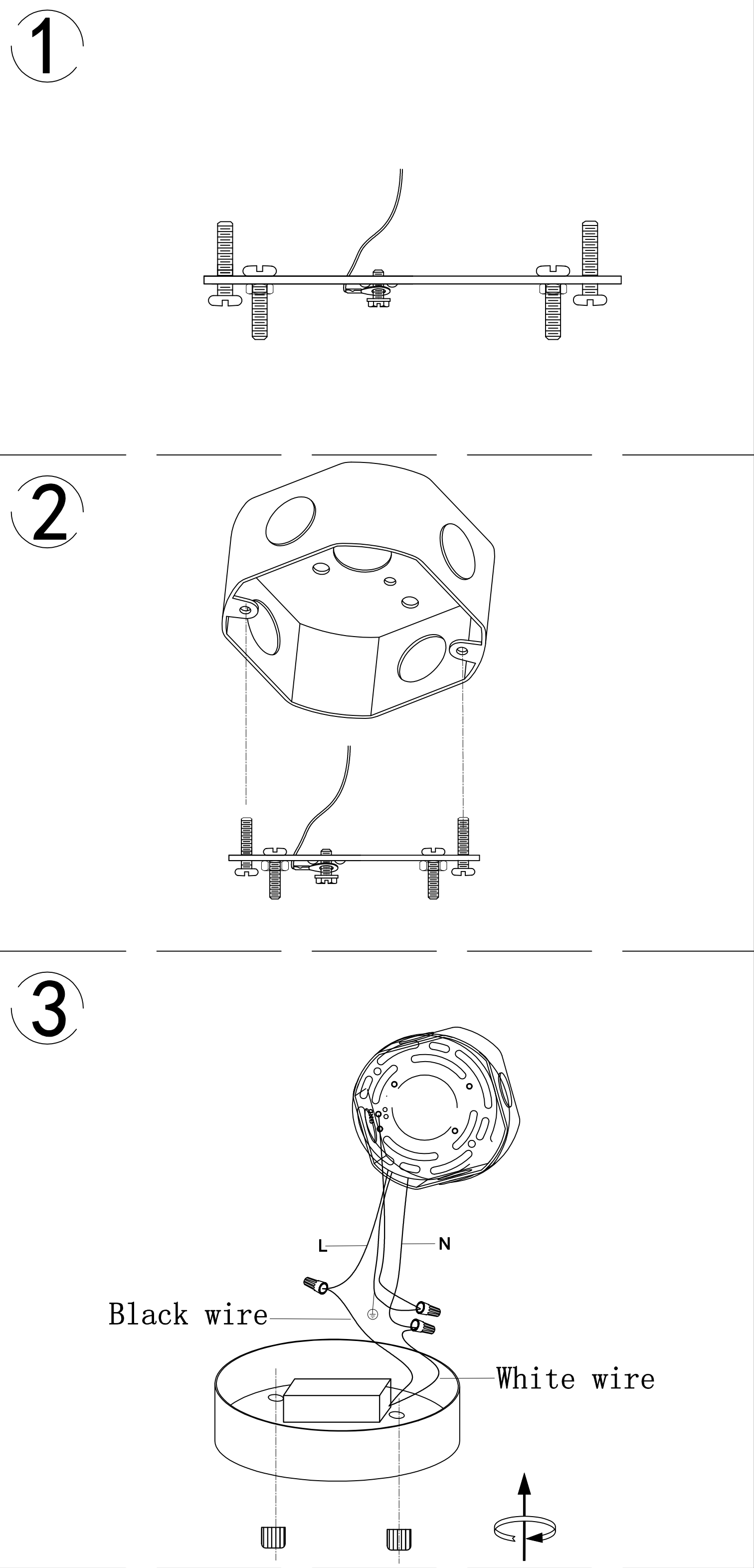
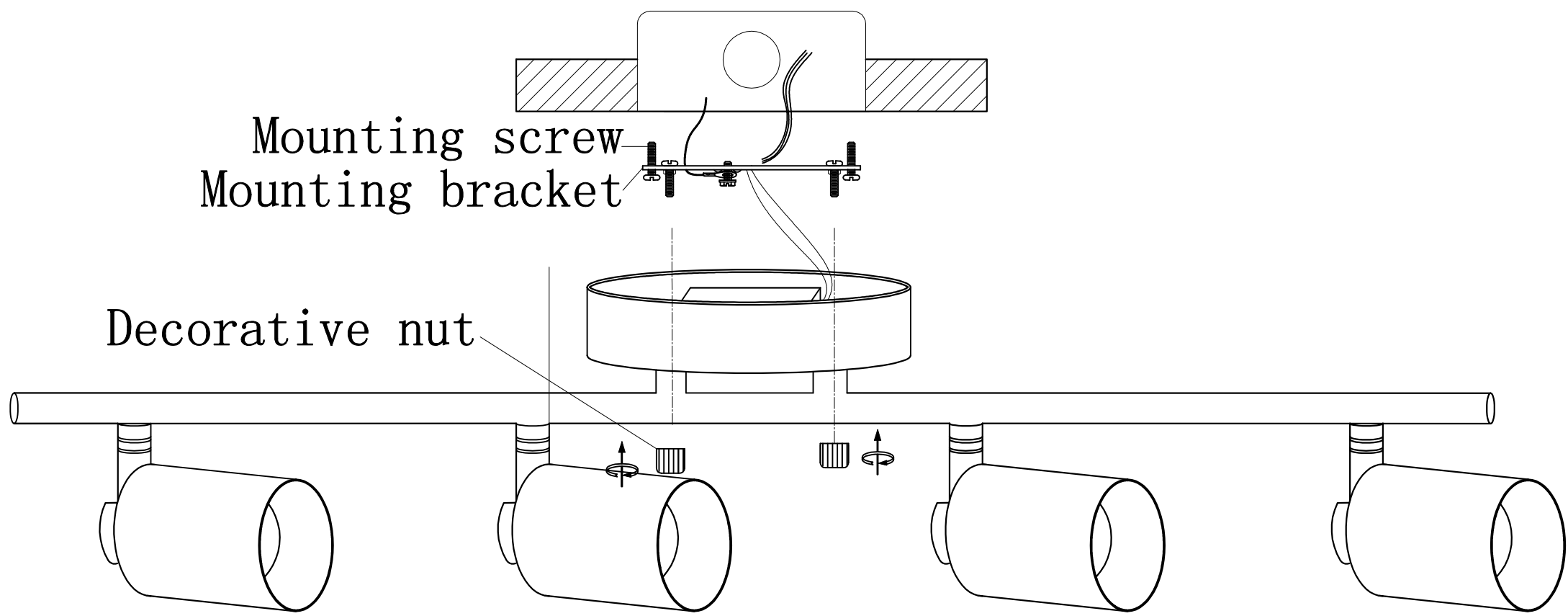
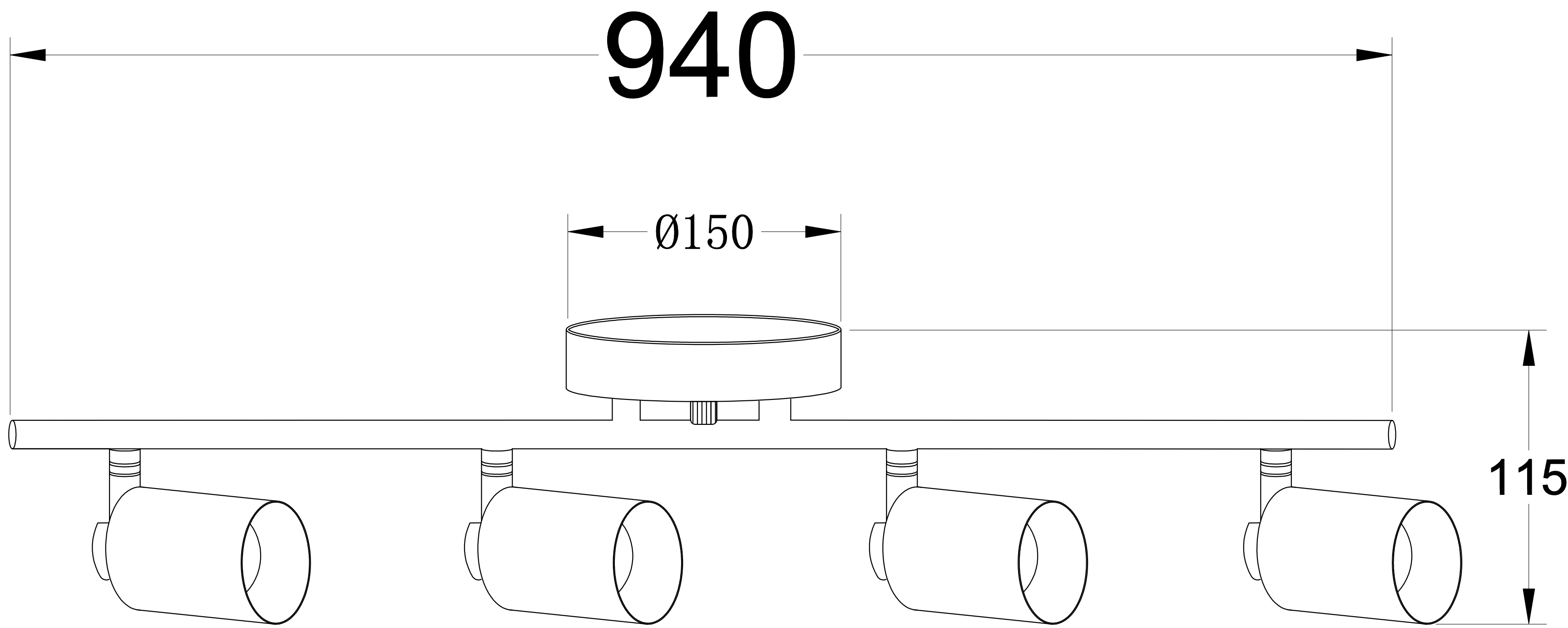


SKU	CE1008571/CE1008572/CE1008573
Driver NOVBO	Input:120VAC, 60HZ Output:36VDC, 650mA
Product Size	940x150x115mm
Product Weight	1.6Kg
Power	4*7W
Lumen Output	801lm per head
Color Temperature	3000K
CRI	≥80
Dimmer	Triac dimmable



Installation instruction

- 1.Turn off the power
- 2.Dismantle mounting bracket subassembly as picture ①,install mounting bracket to J-Box with mounting screws
- 3.Connect the fixture to a suitable ground in accordance with local electrical codes
- 4.Connect the White wire to the neutral power line wire with a wire nut
- 5.Connect the Black wire to the hot power line wire with a wire nut
- 6.Neatly place all wires and wire nut connections inside the canopy
- 7.Install canopy to ceiling with decorative nuts
- 8.Turn on the power