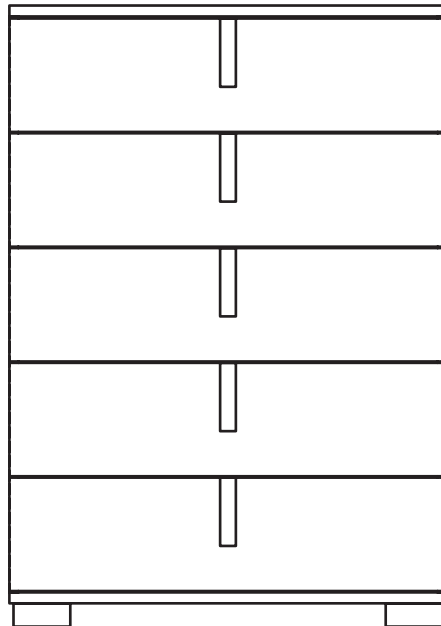




# NOBLE HIGH CHEST

## ASSEMBLY INSTRUCTIONS



IMPORTANT  
ASSEMBLING THIS  
UNIT NEEDS  
MINIMUM 2 PEOPLE






**NO**  
DON'T USE THE DRILL

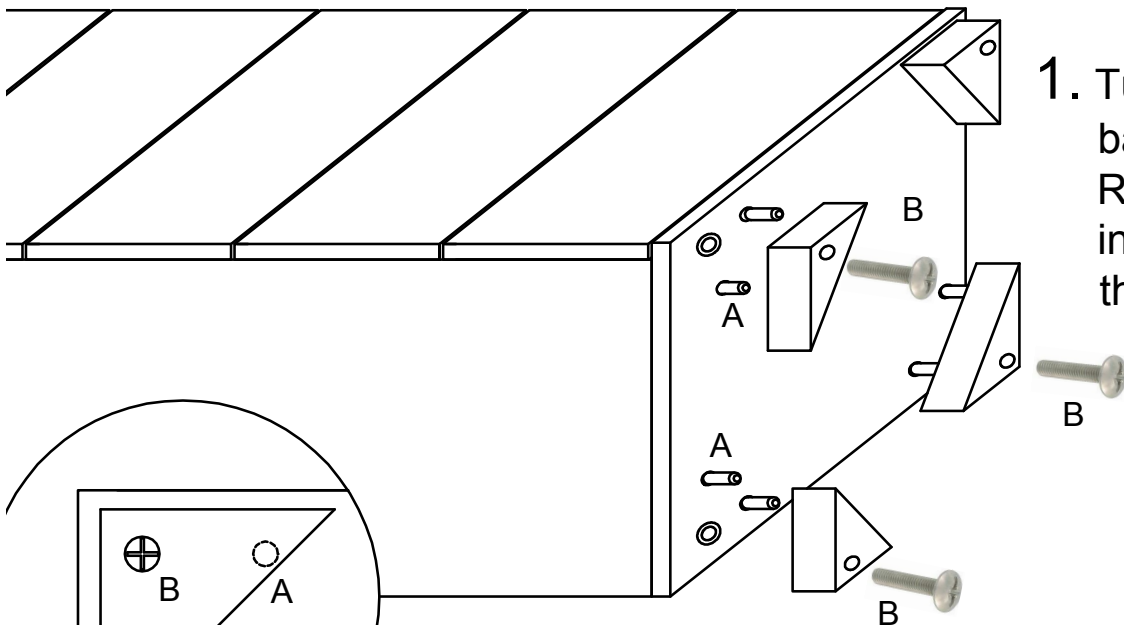


**STAR INTERNATIONAL™**  
FURNITURE, INC.  
*ESSENTIALS FOR LIVING®*

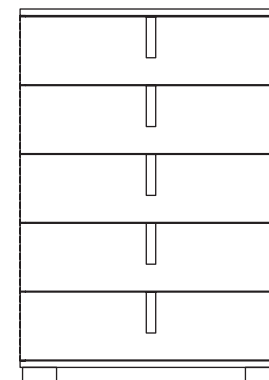
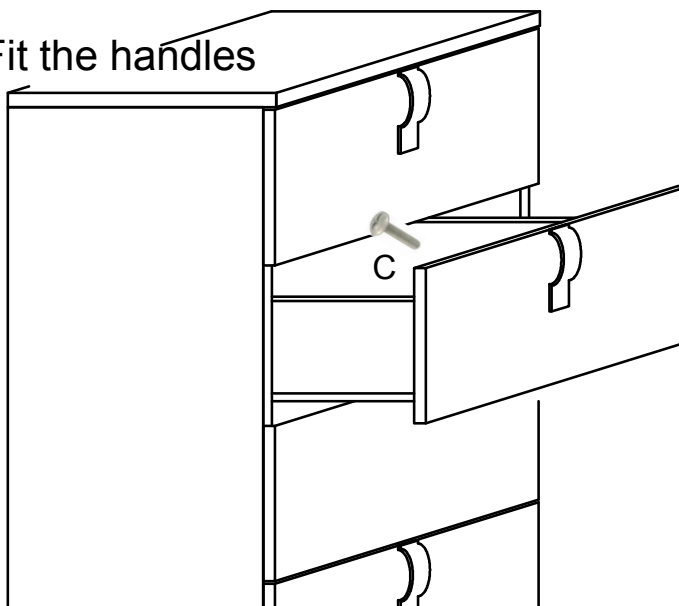
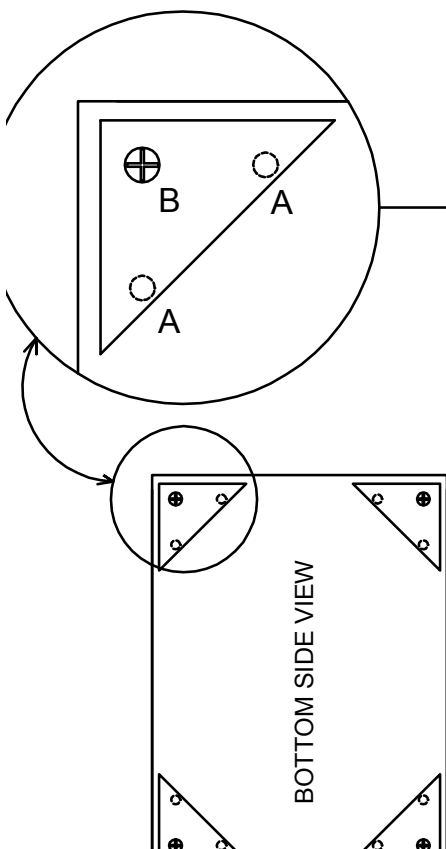
## PARTS CHECKLIST

A		Wooden dowels (8 pcs)
B		Screw for feet (4 pcs)
C		Screw for handles TBL 4MA (10 pcs)

1. Turn the chest on his back and fix the feet. Remove the drawers in order to facilitate the operation



2. Fit the handles



**STAR INTERNATIONAL FURNITURE, INC.**  
19511 PAULING, FOOTHILL RANCH, CA 92610 USA  
WWW.STARINTERNATIONALFURNITURE.COM  
TEL: 949.858.2100 | FAX: 949.858.2044





**HY** <sup>®</sup> **STAR INTERNATIONAL** <sup>™</sup>  
FURNITURE, INC.  
*ESSENTIALS FOR LIVING* <sup>®</sup>

**STAR INTERNATIONAL FURNITURE, INC.**

19511 PAULING, FOOTHILL RANCH, CA 92610 USA

[WWW.STARINTERNATIONALFURNITURE.COM](http://WWW.STARINTERNATIONALFURNITURE.COM)

TEL: 949.858.2100 | FAX: 949.858.2044