



Welland

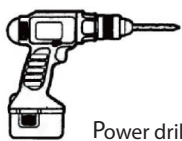
Buffalo Corner Shelf With Hooks

WSV155-160 WH

TOOLS REQUIRED



Hammer



Power drill



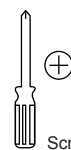
3/8 in. drill bit



Level

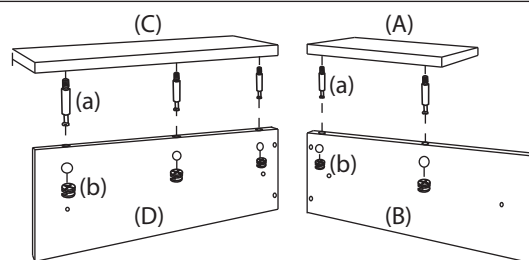
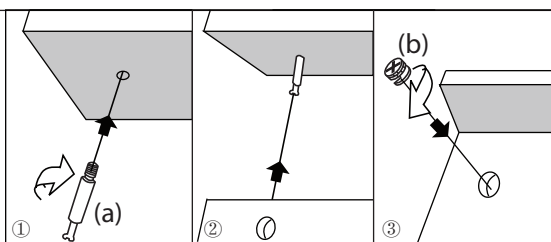
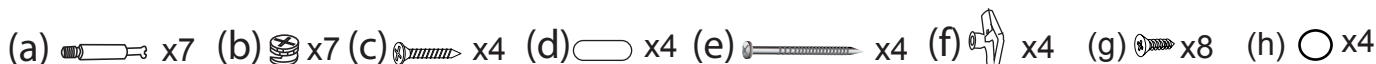
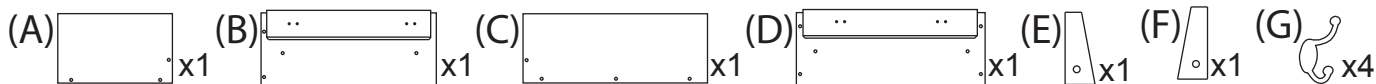


Pencil

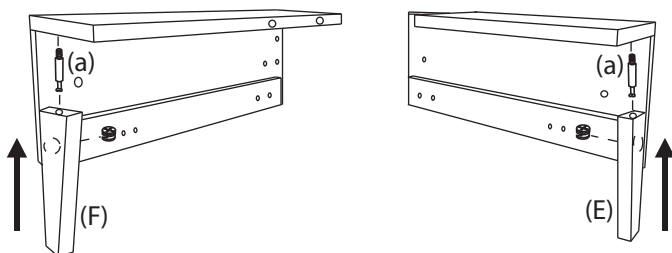


Screwdriver

INSTRUCTION

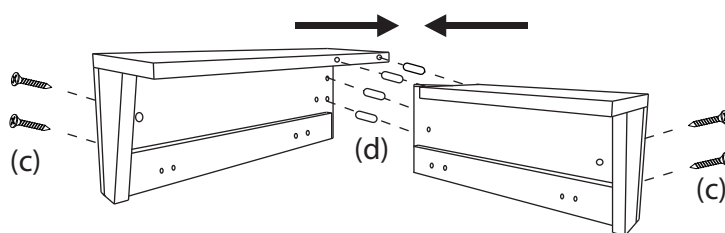


Step 1: Follow the top left illustration ① ② ③ to secure "A" & "B", "C" & "D" successively.



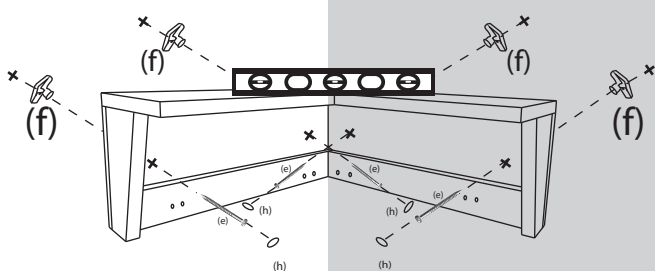
Step2:

Repeat ① ② ③ in **Step1** to secure "E" to "A,B Part," and secure "F" to "C D part".



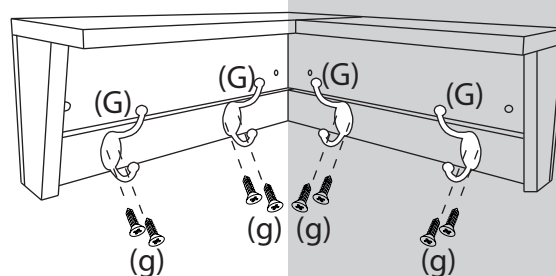
Step3:

Secure "E" "F" to shelf with screws(c), and then secure 2 shelf part together with dowel(d).



Step4:

- ① Put the completed shelf on the corner and make them on the level, mark the points on the wall by referring the picture.
- ② In case the holes don't hit the studs, you will need to use the drywall anchors. Drill holes in marked position by Prower drill and 3/8 in. drill bit, tap the anchors (f) into the holes with a hammer. Then use a power drill or a Philips screwdriver to drive the Screws (e) into the studs or drywall anchors.
- ③ Using round screw hole stickers (h) provided to cover the screw holes.



Step5:

Secure the hooks to the shelf with the screws(g)

DISCLAIMER: Install Welland shelf and shelving units according to instructions provided. WELLAND LLC and its related companies are not responsible for injury or damage resulting from incorrect installation or use. Welland products are for use only as shelves units and are not intended for any other purposes. For assistance with installation or missing parts, please contact us via customerservice@wellandllc.com

The emission of the chemicals listed in Prop 65 in this product has been tested to meet the standard of CARB ATCM.