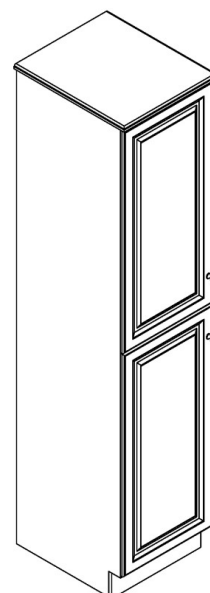
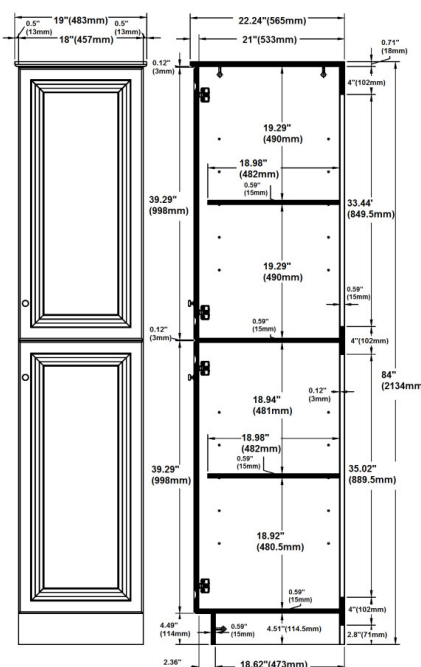


Wyndham 2-Door Linen Tower Cabinet 19" White



539700  
19"(483mm) x 22.24" (565mm) x  
84" (2134mm)

539924:  
19"(483mm) x 22.24" (565mm) x  
84" (2134mm)

## SPECIFICATIONS

MATERIAL CONSTRUCTION:	Wood	FACE FRAME MATERIAL:	N/A
ASSEMBLY REQUIRED:	Yes	SIDES MATERIAL:	Particle Board
TOOLS NEEDED FOR INSTALLATION:	Screwdriver	BOTTOM MATERIAL:	Particle Board
ASSEMBLED DIMENSIONS:	84" H x 18" L x 21" D	BACK PANEL MATERIAL:	MDF
WEIGHT:	105 lbs.	BACK BRACE MATERIAL:	Particle Board
NUMBER OF DOORS:	2	GLASS STYLE:	N/A
DOOR MATERIAL:	MDF	LIGHTED:	No
NUMBER OF SHELVES:	2	QTY OF LAMPS:	N/A
ADJUSTABLE SHELVES:	Yes	POWER SOURCE:	None
SHELF MAX WEIGHT CAPACITY:	30 lbs.	MOUNTING HARDWARE INCLUDED:	No
SHELF WIDTH:	18.98"	MOUTING TYPE:	Floor Mount
SHELF THICKNESS:	0.59"		
SHELF MATERIAL:	Particle Board		

WARRANTY:	1-Year limited warranty
CARB COMPLIANT:	CARB Phase 2
TSCA TITLE IV COMPLIANT:	Yes



TYPE:  
JOB:  
ORDER CODE:  
APPROVALS: