

**OBJECTO**  
935 Broadway, 6th Fl.  
New York, NY 10010  
Tel: 844-objecto (844-625-3286)  
Fax: 800-433-9099  
[www.objecto.com](http://www.objecto.com)  
[support@objecto.com](mailto:support@objecto.com)



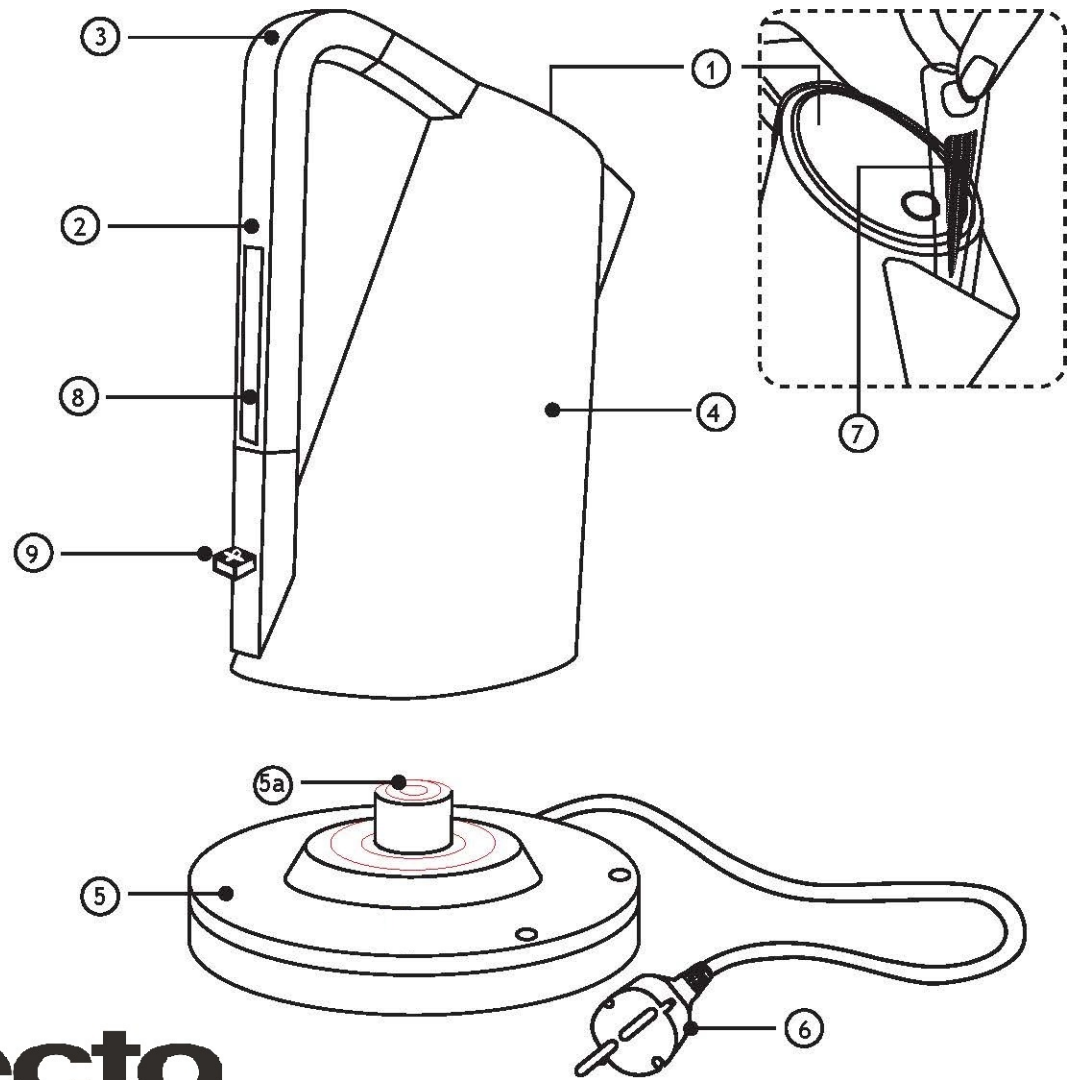
Owner's Guide

Manuel d'instructions

Instrucciones para el uso

# objecto

objecto



Conversion table

°Celsius - °Fahrenheit

°C	°F	°C	°F
45	113,0	73	163,4
46	114,8	74	165,2
47	116,6	75	167,0
48	118,4	76	168,8
49	120,2	77	170,6
50	122,0	78	172,4
51	123,8	79	174,2
52	125,6	80	176,0
53	127,4	81	177,8
54	129,2	82	179,6
55	131,0	83	181,4
56	132,8	84	183,2
57	134,6	85	185,0
58	136,4	86	186,8
59	138,2	87	188,6
60	140,0	88	190,4
61	141,8	89	192,2
62	143,6	90	194,0
63	145,4	91	195,8
64	147,2	92	197,6
65	149,0	93	199,4
66	150,8	94	201,2
67	152,6	95	203,0
68	154,4	96	204,8
69	156,2	97	206,6
70	158,0	98	208,4
71	159,8	99	210,2
72	161,6	100	212,0

objecto

WARRANTY  
GARANTIE  
GARANTÍA

serial label

# IMPORTANT NOTICES

Dear Customer, thank you for choosing the kettle from Objecto. Like any domestic appliance, this kettle must be used with care and attention to prevent people getting burnt and the kettle getting damaged.

**BEFORE USING THE KETTLE FOR THE FIRST TIME, READ ALL THE INSTRUCTIONS ON INSTALLATION, USE AND MAINTENANCE AND THE SAFETY INSTRUCTIONS CAREFULLY. DO NOT USE THE KETTLE UNLESS YOU ARE THOROUGHLY FAMILIAR WITH THE INSTRUCTIONS.**

## **WARNING**

No liability is accepted for damage due to:

- incorrect use or use other than for its intended purpose
- using the kettle continuously
- repairs carried out by unauthorized persons
- use of non-original spare parts or accessories
- plug-in Objecto kettle in a non-grounded socket

For further information, or in the event of problems that have not been sufficiently addressed in these instructions, contact Customer Care at Objecto.

**SAVE THESE INSTRUCTIONS CAREFULLY** and remember to pass them on to those who will use the kettle after you. If the instructions are lost before you use the kettle, request the instruction booklet from Customer Care at Objecto or send an e-mail [support@objecto.com](mailto:support@objecto.com) or download it from [www.objecto.com](http://www.objecto.com). On the first page of the cover you will find the illustrations relating to the text. Keep the first page open as you read the instructions on use.

# Contents

Pag. 13      Technical features

Pag. "      Description of kettle parts

Pag. 14      Important safeguards

Pag. 16      Installation and starting up

Pag. 17      Automatic shutdown

Pag. "      Safety system

Pag. "      Cleaning and maintenance

Pag. 18      Troubleshooting

Pag. 19      Warranty

## TECHNICAL FEATURES

Power supply	See rating plate underneath machine
Power rating	See rating plate underneath machine
Dimensions	8 1/2" x 7" x 11 3/4" approximately
Body	Pressed Solid 18/10 Stainless Steel
Weight	3 Pounds approximately
Length of power supply cord	30 inches approximately
Thermal overload protection	Built in
Kettle capacity	57.48 fl.oz
Certifications	See rating plate underneath machine
Warranty	As per attached certificate

## DESCRIPTION OF KETTLE PARTS

Lid  
Display  
Stay-cool handle  
18/10 stainless steel kettle  
Power base unit  
Connector  
Plug  
Filter  
Water maximum level mark  
On/Off button

①  
②  
③  
④  
⑤  
⑤a  
⑥  
⑦  
⑧  
⑨

# IMPORTANT SAFEGUARDS

**READ ALL INSTRUCTIONS CAREFULLY. THE KETTLE MUST BE USED ONLY BY ADULTS WHO HAVE BEEN TRAINED IN ITS USE. SAVE THESE INSTRUCTIONS CAREFULLY.**

**1. TO PREVENT SERIOUS INJURIES , ELECTRIC SHOCKS AND FIRE DO NOT IMMERSE CORDS, PLUGS, POWER BASE OR THE KETTLE ITSELF IN WATER OR OTHER LIQUIDS, EITHER PARTIALLY OR TOTALLY.**

**WARNING: DANGER OF BURNS!**

**PAY ATTENTION TO HOT SURFACES!**

Do not touch hot surfaces. Use only the handle to pick-up the kettle. Use an oven glove when touching hot parts such as body (4) , lid (1) and all surfaces of the kettle:

**DANGER OF BURNS!**

**2. The kettle has been designed for HOUSEHOLD USE ONLY.**

This appliance is intended to be used in household and similar applications such as:

- staff kitchen areas in shops, offices and other working environments;
- farm houses;
- by clients in hotels, motels and other residential type environments;
- bed and breakfast type environments.

Use kettle only for its intended use. Do not make any technical modifications that might cause risks.

3. This appliance can be used by children aged from 8 years and above and persons with reduced physical, sensory or mental capabilities or lack of experience and knowledge if they have been given supervision or instruction concerning use of the appliance in a safe way and understand the hazards involved. Children shall not play with the appliance. Cleaning and user maintenance shall not be made by children unless they are older than 8 and supervised.

4. Keep the kettle, the base (5) and the cable out of reach of children under 8 years old.

5. A short power cord with plug is supplied to reduce the risk of becoming entangled in objects, to prevent people for tripping over it and to prevent the cord from wrapping around a longer cord. Long detachable power cords or extension cords are available but they may be used only if a QUALIFIED ELECTRICIAN can confirm that they comply with wiring regulations. DO NOT USE plug/socket adapters. If a long detachable power cord or extension cord is used:

a) The electrical rating of the detachable power cord or extension cord should be at least as powerful as the electrical rating of the kettle indicated underneath the kettle itself.



- b) The extension cord must be of the 3-wire/pole type and must be grounded. A long cord or extension cord must never protrude from furniture or over counter tops or table tops where it may be pulled on by children or tripped over.
- c) Do not place kettle or cords on or near a hot gas ring or electric hotplate, or in or near the oven.
- d) Do not use outdoors.

Do not let the cords hang over the edge of the table or counter, or touch hot surfaces.

Do not operate the kettle with a damaged cord or plug or after the appliance develops faults, or has been damaged in any manner. Return appliance to the nearest authorized service facility for examination or repair. The use of accessory attachments not recommended by the appliances manufacturer may result in fire, electric shock or serious injuries to persons.

e) If the power cable or plugs are damaged, they must be replaced by the manufacturer or with authorized service centre or by a qualified person in order to prevent all risks.

6. Never touch live electrical parts. They may cause electric shocks and serious personal injury.

power base unit (5) to a wall socket having the appropriate voltage. The voltage must correspond indicated on the rating plate underneath the kettle (4). Make sure that the socket that you are using



Connects to a grounded voltage plug.

Do not use the kettle with bare or wet feet.

7. The kettle is only to be used with the base (5) provided.

8. WARNING: avoid spillage of water or other liquids on the base (5) and on the connector (5a).

9. WARNING: Never fill the kettle above 57.48 fl.oz, the «MAX» mark on the display panel (2).

10. WARNING: Never fill the kettle with water when it is positioned on the power base unit (5).

11. WARNING: Only fill the kettle with clean water. No milk, coffee or others.

12. WARNING: Never operate the kettle unattended.

13. WARNING: Never operate the kettle without water. A mistaken use limits the life of the kettle.

14. WARNING: **Never keep pushed the on/off button (9) during a boiling session or after a boiling session.**

15. WARNING: Never boil water if the kettle is overfilled or with the lid (1) open. Boiling water may splash out and hurt people.

16. Always ensure that you pour out boiling water slowly and carefully.

17. To prevent burns avoid to open the lid (1) when the water is being boiled or just after the kettle has switched off.

STEAM MAY BURN!

Be careful when opening the lid (1), if the kettle is still hot and you wish to refill it with water. Boiling water can cause burns.

18. After every boiling session completely empty the kettle. Never leave water in the kettle for a long period of time.

19. Be careful: hot surfaces. Use handles or knobs or wear oven gloves. Be very careful when touching very hot parts such as lid (1), body (4) and all surfaces of the kettle. WARNING! DANGER OF BURNS! The kettle body (4) and lid (1) become very hot during use.

20. The heating element surface is subject to residual heat after use.

21. To disconnect verify that the kettle is switched off and remove the plug (6) from the wall outlet. Always unplug the appliance by holding the plug not the cord. Note: Remove plug from wall outlet when you are not using the kettle.

22. Place the kettle on a flat surface, making sure that the feet adhere firmly to the support surface so that the appliance cannot be overturned. Do not place the kettle on or near hot surfaces or near open flames.

CAUTION: Do not operate the kettle on an inclined surface.

23. To be sure that the kettle works correctly, place it on a flat surface in an adequately lighted and hygienic environment with an easily accessible electrical socket. Keep the kettle at least 4 inches away from the walls.

24. Do not use the kettle under or near flammable material such as curtains, wallpaper, walls.

25. In the event of faults, defects or suspected faults after a fall, unplug the kettle immediately. Never start up a faulty appliance. The repairs must be carried out by the Objecto Service Centre. Contact your dealer and/or contact Customer Care at Objecto or send an e-mail to [support@objecto.com](mailto:support@objecto.com). In the event of fire, use carbondioxide (CO2) extinguishers. Do not use water or powder extinguishers.

## Installation and starting up

The original packaging has been designed for dispatch by post. Keep it in case you need to return the kettle to the supplier. Before installing the kettle, comply with all the points of the safety instructions on the previous pages. After removing the kettle from its packaging, make sure that it is in perfect condition and make sure that no kind of matter, packaging material, warranty sheets or the like have accidentally fallen inside the kettle during transport or when opening the packaging.

The plastic bag in which the kettle is packaged should be kept out of reach of children as it poses a suffocation hazard. Be sure that the kettle is in perfect conditions. In order to remove dust that may have accumulated on the exterior surfaces of the kettle, simply dust it off with a dry soft cloth. After you have carried out the above steps and have strictly followed the safety standards, proceed to connect to the power supply.

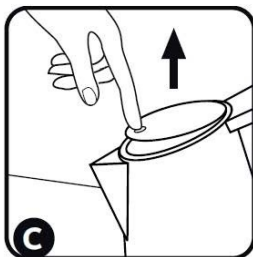
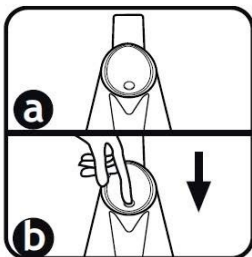
**Connecting to power supply: electric current can kill! Follow safety instructions!**

**Plug the power cord (6) of the Objecto kettle into a power socket of the same voltage of the one indicated on the rating plate underneath the kettle.**

Rinse out carefully all the internal surfaces and the spout of the kettle: fill the kettle with water until the maximum level 57.48 fl.oz, boil it and empty the boiler. Repeat at least two times.

Fill the kettle:

- remove the kettle body from the power base unit (5). Hold it by the handle (3)
- open the lid (1) : press on the rubber "point" (picture "a") on the lid (1) and press down firmly (picture "b"). Then release (picture "c") and the lid (1) will open automatically. The lid (1) is not removable and the max opening is shown in the picture "d".
- fill the kettle with water directly under the tap or fill it by pouring water from a bottle, jug or jar to the needed level. Do not overfill the kettle. Be careful not to go over 57.48 fl.oz.



d) close the lid (1) : press on the rubber "point" (picture "a") on the lid (1). Never operate the kettle with the lid (1) open.

e) Put the kettle on the base (5).

f) To boil water just push on the on/off button (9). The light in the on/off button (9) shows that the kettle is working.

When the boiling session is finished, the kettle automatically switches off.

To disconnect, make sure that the kettle is not running. Do not unplug the kettle from the wall outlet by pulling on the cord. Always unplug the appliance by holding the plug (6). To switch off completely the device, the plug (6) has to be removed from the socket.



**Make sure that the electric socket that you are using is suitably grounded.**  
**Never allow parts carrying live voltage to come into contact with water: it may cause a short circuit!!!**  
(follow all the safety instructions specified before).  
**Be careful: never keep the on/off button (9) pushed during or after every boiling session.**  
**Be careful: never operate the kettle without water.**

## Automatic shutdown

The kettle is equipped with a system that automatically switches off the device shortly after the water is boiled.  
If warm water is desired, the heating process can be stopped anytime by pulling the on/off button (9). The shutdown takes place automatically as the kettle is removed from its base (5).  
For functional reasons, some condensations may appear at the bottom of the on/off button (9), on the base (5) and on the connector (5a). This happens for technical reasons and does not bear on the safety of the device.

## Safety system

A thermostat protects the kettle from overheating: if the device is accidentally switched on empty, this system automatically switches off the device. The device will restart its normal functions in around 10 minutes.  
If the first thermostat protection would not function due to improper use, another temperature limiter ensures protection.

## Cleaning and maintenance

**CAUTION:** Always disconnect the kettle from the electrical outlet before cleaning.  
Before cleaning, be sure the kettle is cold.  
Clean the exterior surface of the kettle with a clean, damp cloth to preserve its original highly polished finish. Dry and polish with a soft cloth.  
Do not use abrasive cleansers or scouring agents of any kind on the interior or exterior of the kettle.  
Do not immerse the kettle or power base in water or other liquid, and be sure that the electric kettle plug (6) and connector (5a) of the power base (5) is kept dry.

### a) Filter (7)

Scale, or calcium, is a natural substance that forms when hard water is boiled. The filter serves to retain the calcium in the water kettle. It is important to clean the filter regularly. The filter clips into the spout and can be removed by pulling it up from the spout. It can be cleaned by gently brushing with a soft brush under running water.

**ATTENTION: This operation can be performed only when the kettle is not working and when the kettle has cooled down. DO NOT REMOVE THE FILTER WHEN OBJECTO KETTLE IS WORKING AND WHEN THE SUFACE IS HOT. BOILED WATER AND STEAM CAN BURN!!!**

### b) Decalcification

Decalcification refers to remove the calcium deposits which may form in the interior metal parts of the kettle. To get the best performance from your OBJECTO kettle, decalcify your unit from time to time. Frequency depends on the hardness of your tap water and how often you use the kettle. Be careful: a kettle with calcium scales needs more time to boil water. This will cause a waste of energy.  
We suggest to do it or every 100-200 boiling cycles, or every two weeks or every time you see white spots on the internal bottom surface of the kettle: it means that there is limestone sediment. We suggest the use

of a kettle descaler in order to dissolve these chalky deposits or lime build up. Follow the directions on the descaler package. By the way, OBJECTO suggests the following natural way: if a commercial descaler is not available, fill the kettle with enough white vinegar to cover 3/4 in. at the bottom. Bring the vinegar to a boil. You may need to repeat this several times with cooled vinegar to remove the calcium build up completely. When the descaling process is complete, empty the kettle and rinse out several times with clean water.

## Troubleshooting

If the Objecto kettle develops faults or defects or if irregularities are suspected, unplug it immediately. If you cannot eliminate the fault by following the instructions in this manual, contact Customer Care at OBJECTO. Repairs carried out incorrectly expose the user to grave danger. No liability is accepted for damage or injury caused by repairs carried out incorrectly and in such cases warranty rights are voided.

TROUBLE	POSSIBLE CAUSE	SOLUTION
The kettle does not work properly or stops before boiling.	There is lime scale into the kettle.	Make the descaling as for point b) of the Cleaning and maintenance chapter.
If the water tastes bad.	1) Water is in the kettle for more than 12 hours.  2) The kettle is not well washed after the descaling cycle.	1) We suggest to change the residual water after each boiling cycles.  2) Rinse the kettle sufficient times in order to remove completely the descaling product.
The kettle is switched on and after a few seconds it automatically switches off.	The kettle is empty and the protection system of the resistance is working.	Wait approximately 10 minutes, fill the kettle with water and switch it on.

# Warranty

Thank you for selecting our Products.

Please carefully read the User's Manual furnished with this product. We believe that you will be very satisfied with your purchase. We will provide the following LIMITED WARRANTY to you as the original purchaser.

Should service be necessary for any reason due to manufacturing defect or malfunction during the 90 days period, OBJECTO will provide carry-in repair service at our FACTORY SERVICE CENTER at no charge, and for the duration of the extended 9 months parts warranty period will replace the defective part only, not including labor, provided the defect or malfunction is verified along with the date of purchase. In the event service is necessary, you may return the unit to our FACTORY SERVICE CENTER listed below.

- a) Pack the unit in a well padded heavy corrugated box. Be certain that the unit is well protected.
- b) Enclose your check or money order payable to H.S.I., in the amount of \$40.00.
- c) Enclose copy of proof of purchase.
- d) Ship the unit prepaid via UPS or parcel post insured.

NOTE: This warranty does not cover:

- a) OBJECTO products which have been damaged by negligence, misuse or accident or which have been modified or repaired by anyone other than our FACTORY SERVICE CENTER.
- b) Damage to OBJECTO equipment that has been improperly connected to the equipment of other manufacturers.
- c) Costs incurred in the shipping of OBJECTO products to our FACTORY SERVICE CENTER.

This warranty is valid only in the United States of America and does not extend to owners of the product subsequent to the original purchaser. Any applicable implied warranties, including the warranty of merchantability, are limited in duration to a period of 90 days from the date of original purchase at retail and no warranties, whether expressed or implied, shall apply to this product thereafter. Under no circumstances shall OBJECTO be liable for any loss or damage, direct or consequential, arising out of the use of, or inability to use this product. (Some states do not allow limitation or implied warranties or exclusion of consequential damage, therefore these restrictions may not apply to you.)

This warranty gives you specific legal rights and you may also have other rights which may vary from state to state.

- a) The Limited Warranty Registry Card must be completely filled out and mailed immediately, in order to validate the Limited Warranty.
- b) You must include copy of your purchase slip when you are returning the unit.

Register your new product online at [www.objecto.com](http://www.objecto.com)

**SERVICE INFORMATION:**

**OBJECTO**

**935 BROADWAY, 6TH FL.**

**NEW YORK, NY 10010**

**TELEPHONE : 844-OBJECTO (844-625-3286)**

**FAX : 212-995-1087 / 800-433-9099**

**INTERNET WEBSITE ADDRESS: [www.objecto.com](http://www.objecto.com)**