



LumaNumber & LumaLetter



Installation Guide

LumaNumbers & LumaLetters come in a variety of sizes, colors and mounting options. They can be installed horizontally or vertically directly to a buildings exterior or by using our mounting plates.



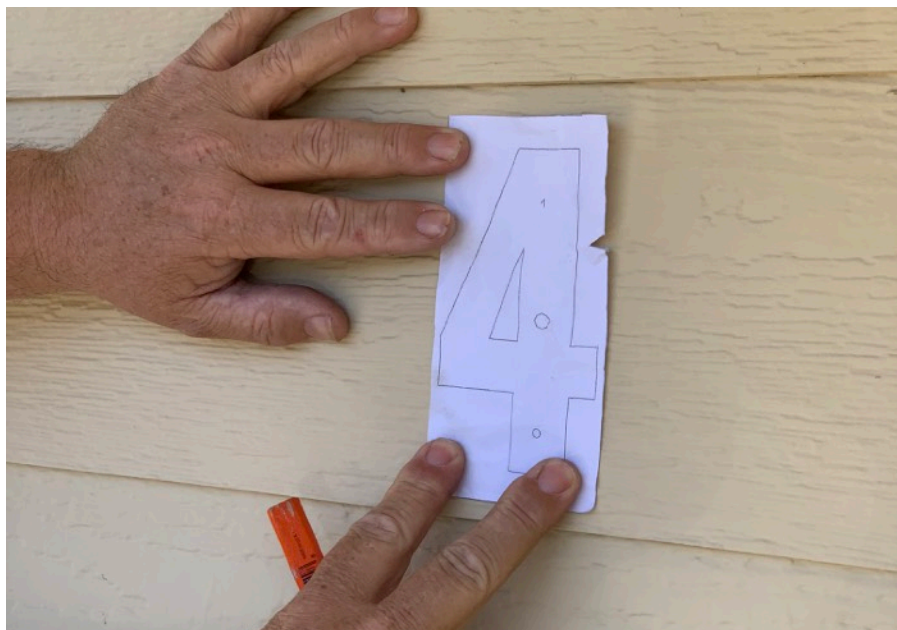
Depending on the type of installation, tools needed include a drill with 3/16th bit, a marker or pencil, a leveler and/or tape measure, a hot air gun or hair dryer, and a Phillips screwdriver.

Carefully unbox each number and lay them out, being careful not to scratch the finish on the numbers. We recommend placing the numbers on a cloth or towel to prevent scratches during setup and pre-install.



Each package includes standard mounting hardware. Some surfaces may require additional anchor bolts. 2 types of mounting risers are included; ½ inch and ¼ inch. The optional mounting plate also includes 4 additional screws and plastic caps to cover the screw holes for a clean appearance once installed. The mounting plates and caps come finished in off-white, but can optionally be painted with the color of your choice.

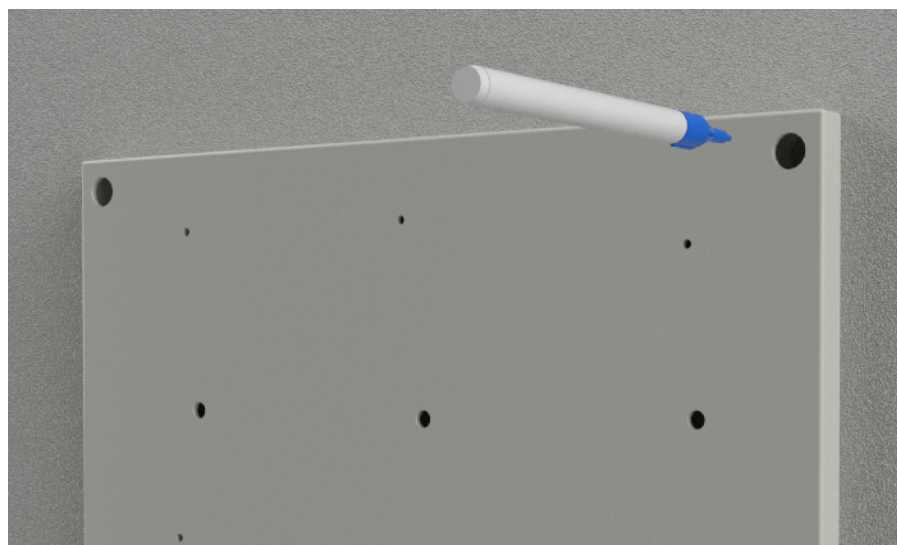
Each number includes mounting screws for securing the numbers to the back of the mounting plate and two threaded shafts if you choose to install the numbers directly to the wall.



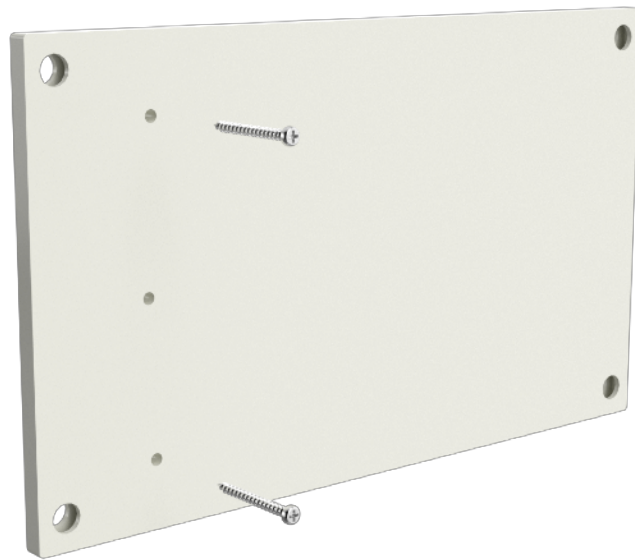
To install directly into wall, level each template against the surface and mark where to drill the holes. If using the mounting plate, tape the templates to the plate. The included screws are designed to screw directly to the wall or into anchor bolts depending on the type of wall.



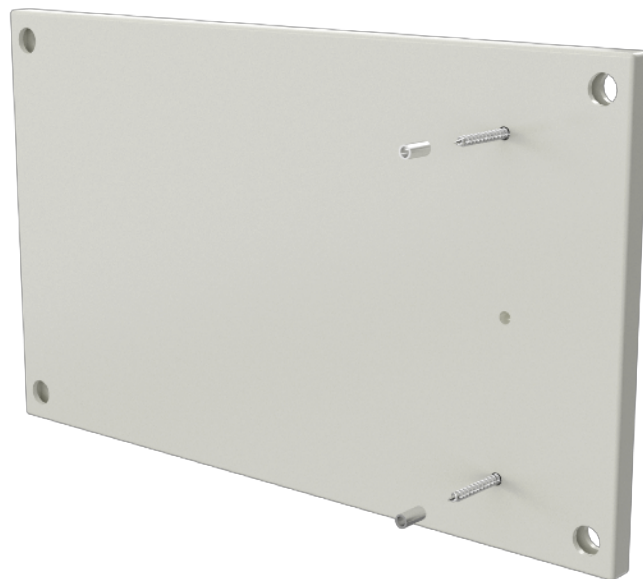
Using a 3/16th drill bit, drill holes into the wall or mounting plate along the hole guides outlined on the templates. Please use appropriate hand and eye protection. There are two holes for the screws and one to run the wiring through the wall or mounting plate. Once completed, remove the template guides.



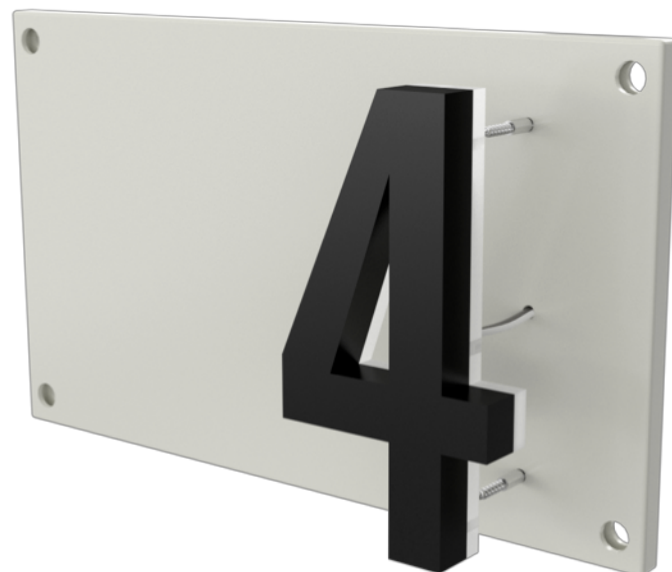
If using the mounting plate, level and mark where you wish to mount the plate and drill holes in the desired location.



To install the numbers onto the mounting plate, insert the two screws included with each number through the back of the mounting plate for each number.



Install the risers behind the numbers between the wall or the mounting plate. The $\frac{1}{2}$ inch riser will create a broader light spread as opposed to the $\frac{1}{4}$ inch riser, which will display a more narrow light spread behind each number.

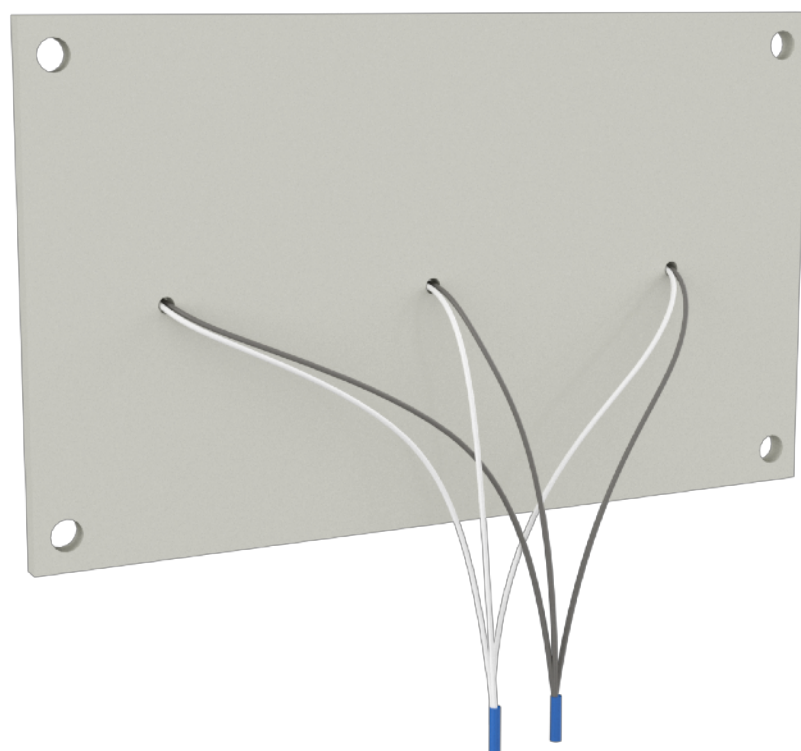


If installing directly into the wall, use the appropriate anchors (not included). Screw the threaded shafts into the numbers.

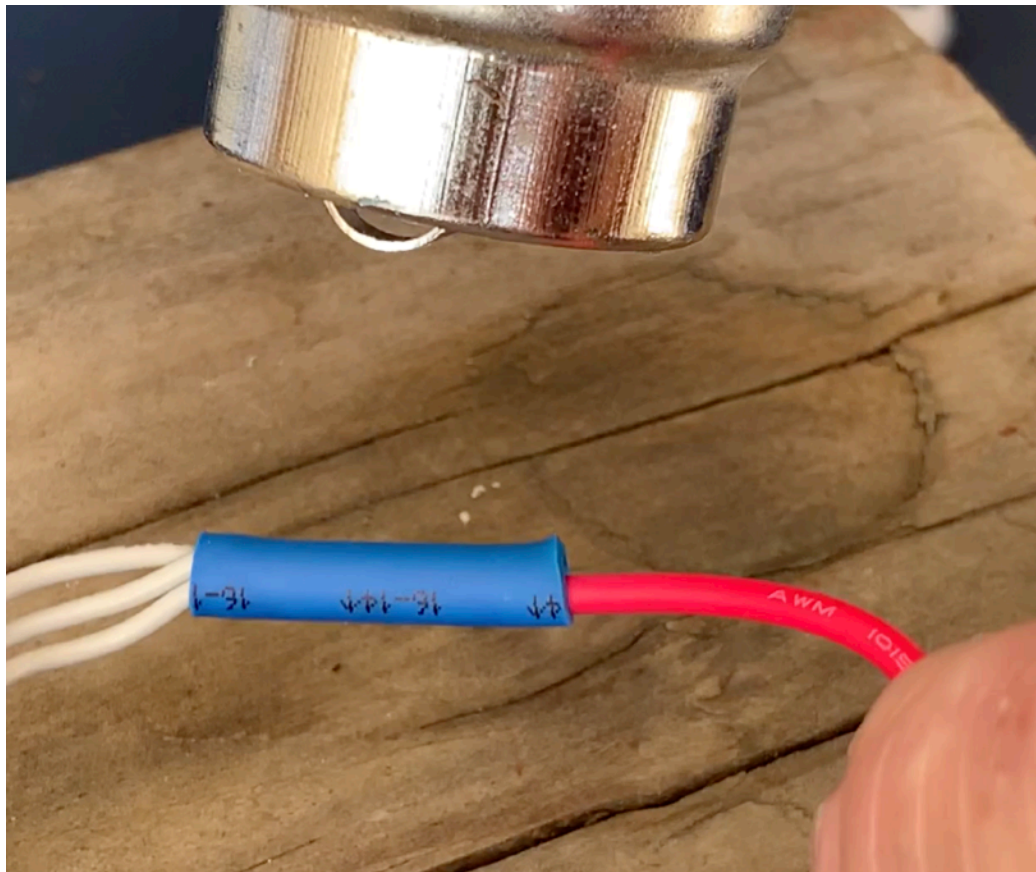
Next, run the wires through the drilled holes, being careful not to damage or strip the wires as you feed them through to the backside of the mounting plate.



From the backside of the mounting plate, gently thread the screws into back of the numbers and then tighten the screws into the back side of the numbers. Do not over tighten, and use just enough force to secure the numbers.



Cut each wire to desired length and strip the wire covers so the wires can be twisted together. Twist two of the gray wires together and two of the white wires together. The gray and white wires will be used to connect to the power source. Use the included wire splicers to join the twisted pairs.



Finally, use a heat gun or hair dryer to seal the joined wiring to lock the connections together, which solders the wires together at the same time. The remaining single gray and white wires will be used to connect to the 12v DC power source. The gray wires will connect to +12v DC and the white wires will connect to -12v DC. For assistance, please contact a licensed electrician.



Secure the mounting plate to the wall using the included screws. If your building exterior material requires wall anchors, please source and install these as they vary by material and are not included.



Next, place the plastic caps on over the holes to hide the screws and create nice clean appearance.



If you have any
questions, please
visit our website.



ModernLights.com