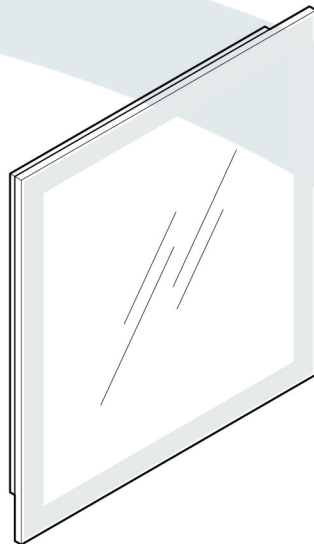


AQUADOM

CABINET & MIRROR
INSTALLATION GUIDE





AQUADOM Mirror Installation Guide

IMPORTANT SAFETY INSTRUCTIONS

When using an electrical furnishing, basic precautions should always be followed, including the following:



DANGER

READ AND FOLLOW ALL INSTRUCTIONS BEFORE USING THIS MIRROR.



WARNING

Risk of electric shock. Connect this furnishing to a properly grounded circuit only. See Grounding instructions.



WARNING

To reduce the risk of burns, fire, electric shock or injury to persons. Use this furnishing only for its intended use as described in these instructions. Do not use attachments not recommended by the manufacturer. Never drop or insert any object into any opening. Do not use outdoors.

GROUNDING INSTRUCTIONS:

This product must be connected to a grounded metal, permanent wiring system, or an equipment-grounding conductor must be run with the circuit conductors and connected to the equipment-grounding terminal or lead on the product.



WARNING

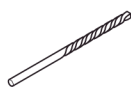
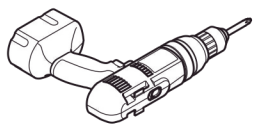
An Electrical option cabinet must be wired to a 20 Amp GFI (Ground Fault Interrupter) protected circuit when used in bathrooms and all other locations required by the National Electric Code.

PLEASE SAVE THESE INSTRUCTIONS FOR FUTURE REFERENCE

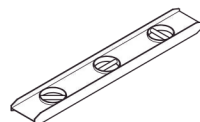
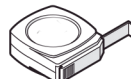
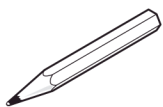


AQUADOM Mirror Installation Guide

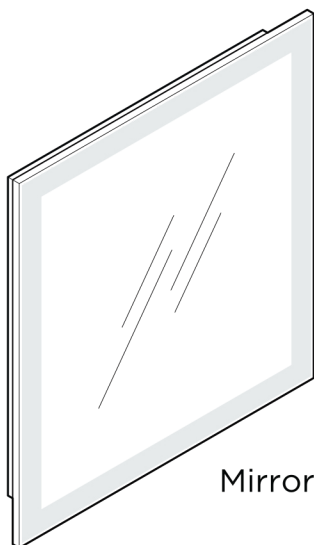
TOOLS REQUIRED FOR ASSEMBLY



1/8" Drill Bit



PARTS INCLUDED



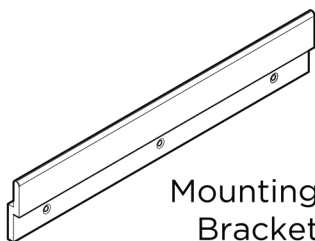
Mirror



Wire Nuts



Screws



Mounting
Bracket



NOTE: Determine overall mirror dimensions before proceeding to installation.

*All dimensions & specifications are approximate and subject to change without notice.

AQUADOM Mirror Installation Guide

ELECTRIC CONNECTIONS

ALL WIRING SHOULD BE DONE BY A QUALIFIED LICENCED ELECTRICIAN



WARNING: Shut off power before wiring the mirror.



WARNING: An Electrical option mirror must be wired to a 20 Amp GFI (Ground Fault Interrupter) protected circuit when used in bathrooms and all other locations required by the National Electric Code.

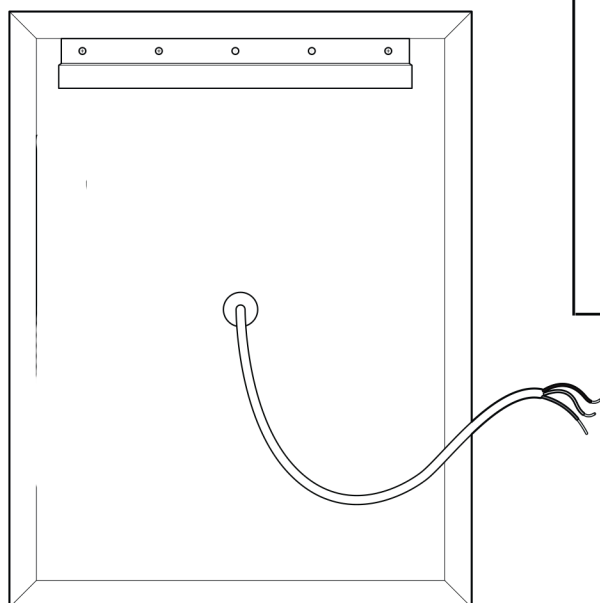


WARNING: This mirror must be connected to a grounded, metal permanent wiring system or an equipment-grounding conductor must be run with the circuit conductors and connected to the equipment grounding terminal or lead on the mirror.

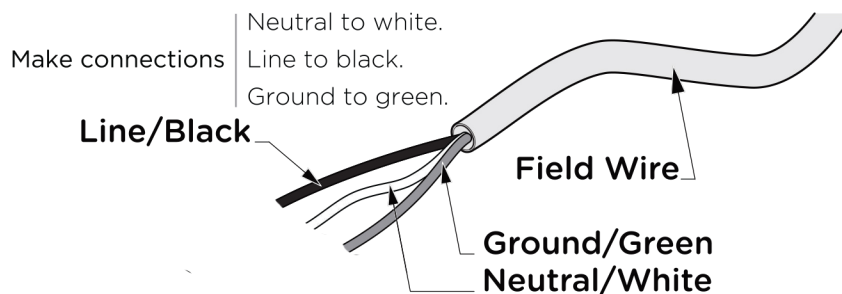


CAUTION: Requires 120 VAC 20 Amp GFI protected circuit.

The electric wire comes through the access hole in the back of the mirror.



Electric wiring: Be sure to provide enough wire to make the proper and safe connection to the Field/Power.

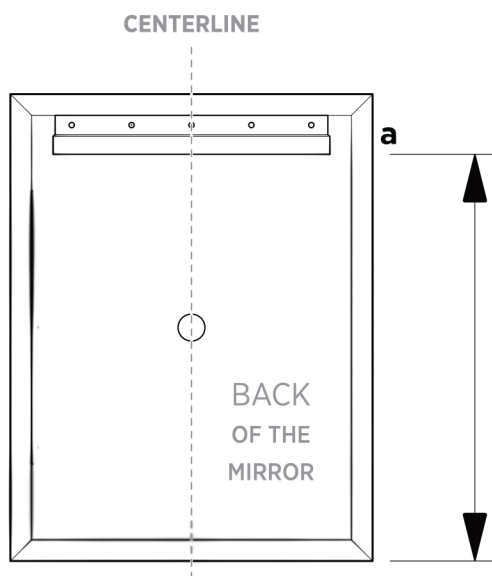


MIRROR FEATURES

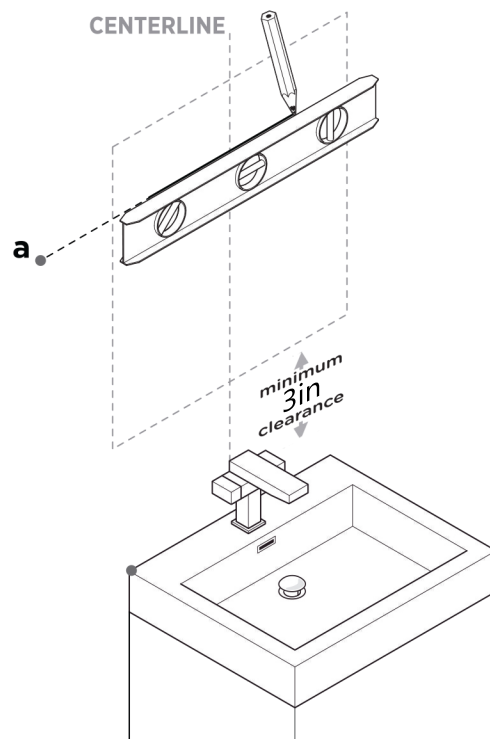
Ip44 rated Frame/backplate
5mm copper free silver mirror
High output LED lighting:
CRI 90+, 1950LM, 4000-4500K CCT, Ip65
Dimmable touch switch for surface LED
Tri-Color LED light; Blue-Cold 6500kelvin
Yellow-Warm 2700kelvin
White-Mix 4600kelvin
Defogger with touch switch
Digital clock

INSTALLATION INSTRUCTIONS

- 1** Measure the distance between the bottom of the mirror and point **a**.



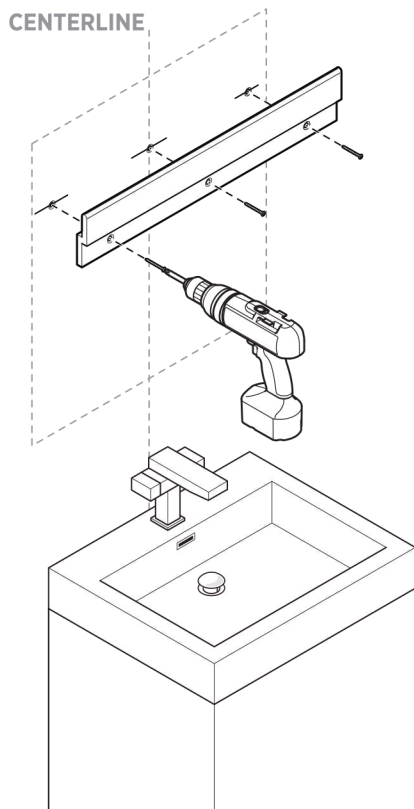
- 2** Draw a horizontal line from the point **a** using a level.



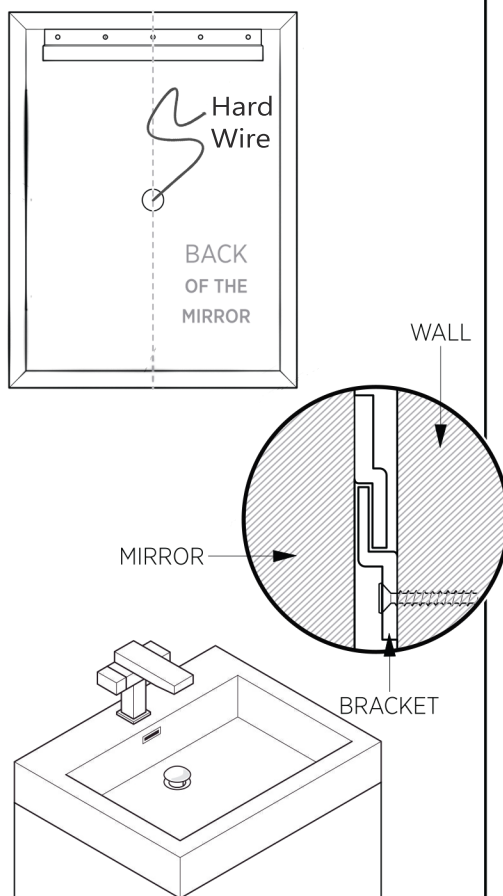
WARNING:

Mounting bracket must be attached to furring strip/channel or wall stud.

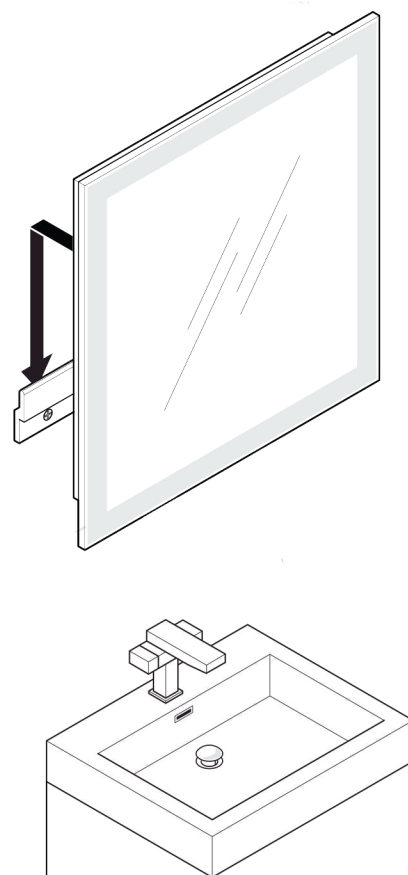
- 3** Attach the mounting bracket to the wall.



- 4** Connect the Hard Wire to power line.

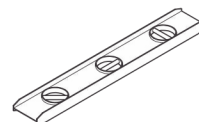
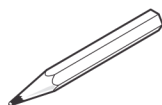
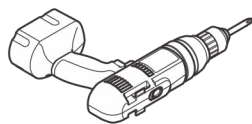


- 5** Hang the mirror on the bracket.

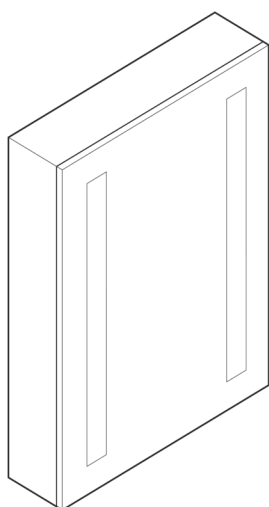


AQUADOM Cabinet Installation Guide

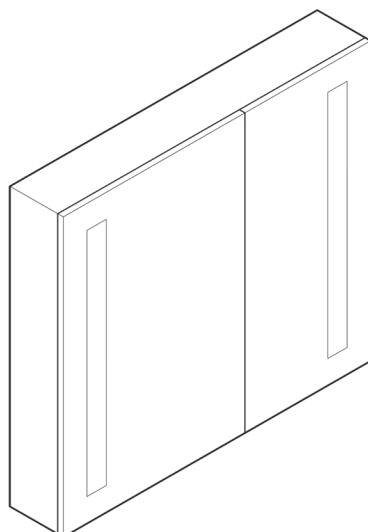
ASSEMBLY TOOLS



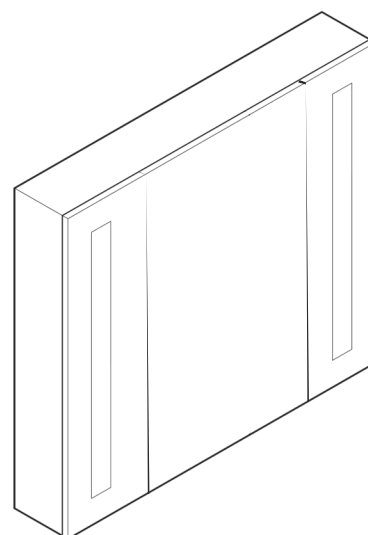
PARTS



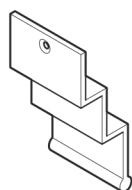
Single Door



Double Door



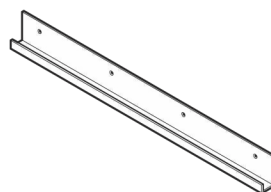
Triple Door



Top
Mounting
Bracket



Shelf Clip



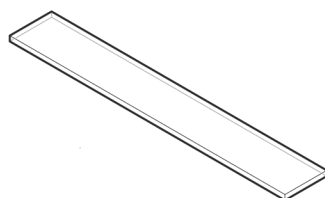
Bottom
Mounting
Bracket



Screw Cap



Hole Plug



Glass Shelf



Glass Side Panel



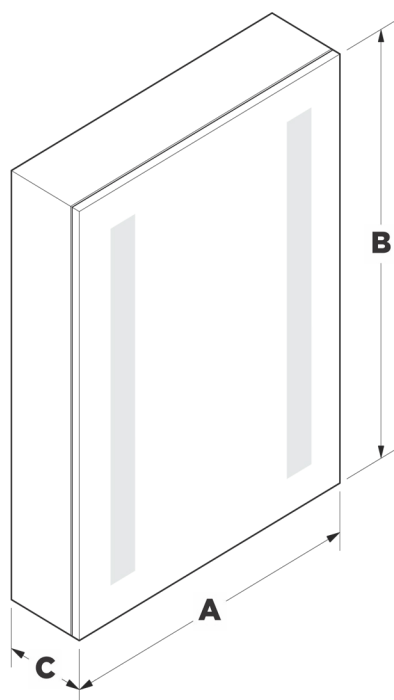
Hinge Screw



Wire Nut

AQUADOM Cabinet Installation Guide

DIMENSIONS



A - Cabinet's width

B - Cabinet's Height

C - Cabinet's Depth



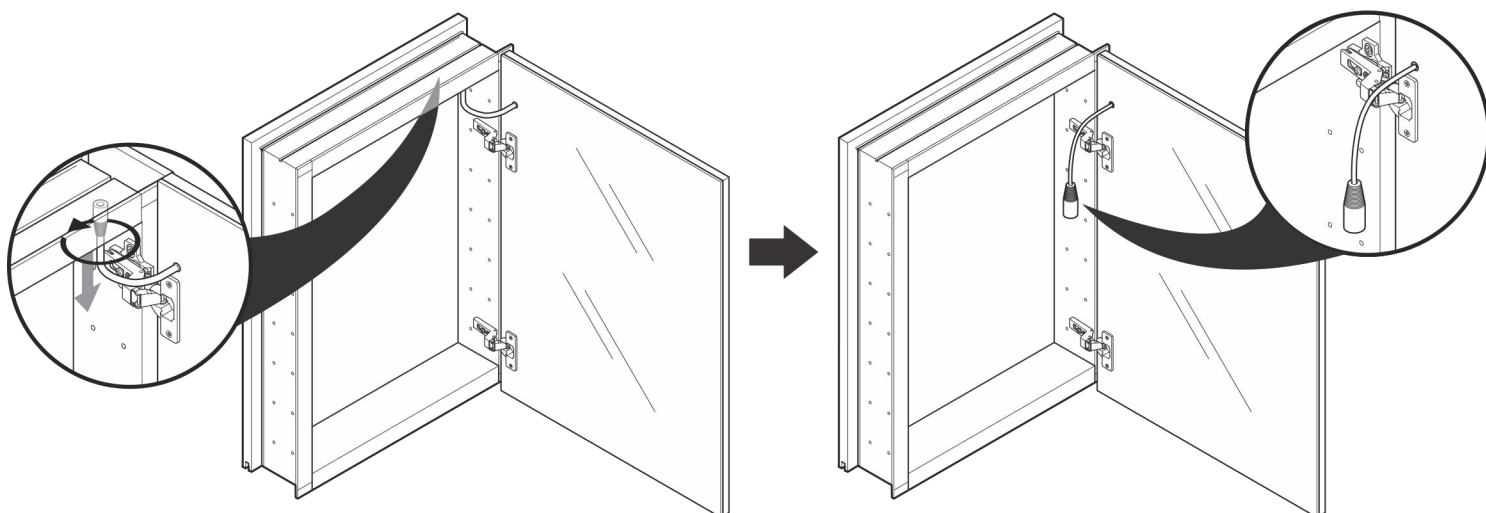
NOTE: Determine overall medicine cabinet dimensions. If recessing medicine cabinet, determine rough-in dimensions.

Dimensions (inches)	Rough In Dimensions (inches)
20 x 26	19.5 x 25.5
24 x 30	23.5 x 29.5
30 x 30	29.5 x 29.5
36 x 30	35.5 x 29.5
48 x 30	47.5 x 29.5
60 x 30	59.5 x 29.5
24 x 40	23.5 x 39.5
30 x 40	29.5 x 39.5
36 x 40	35.5 x 39.5
48 x 40	47.5 x 39.5

PRE-INSTALLATION

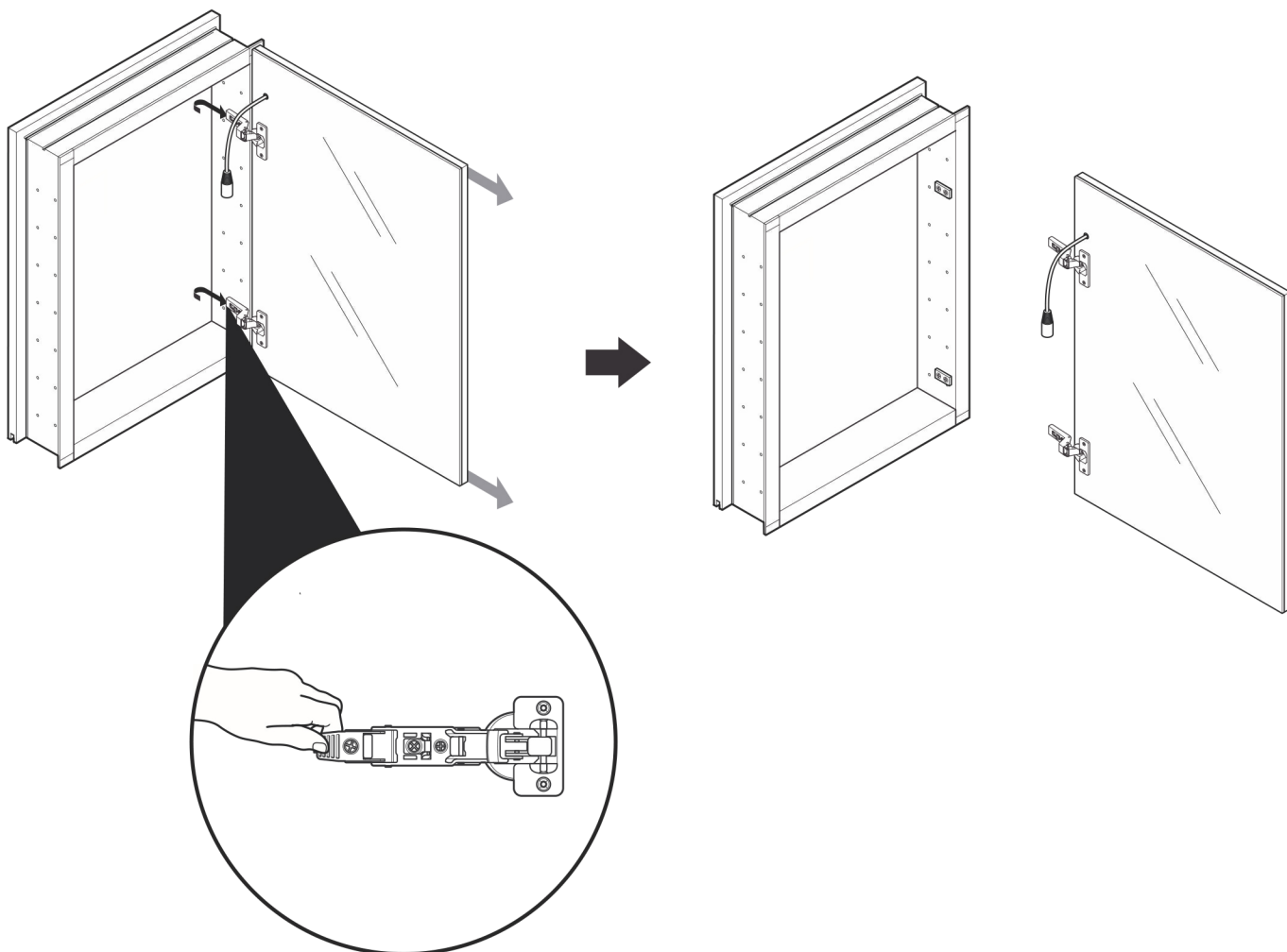
1

Remove Door/s Prior mounting your cabinet. Start with unplugging the door from the cabinet.



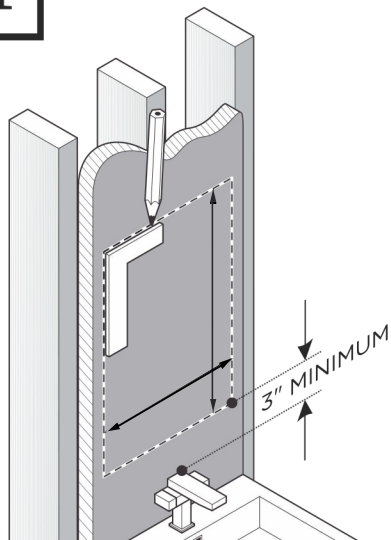
2

While supporting the door release the lever under the hinge arm
Slide the door off the frame.



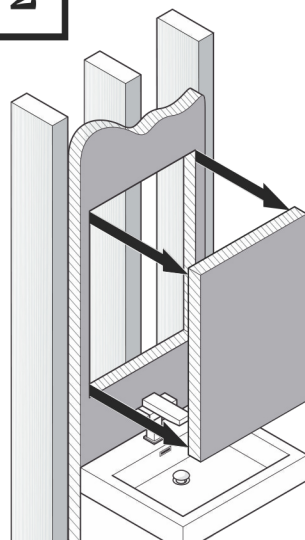
RECESS-MOUNT INSTALLATION

1



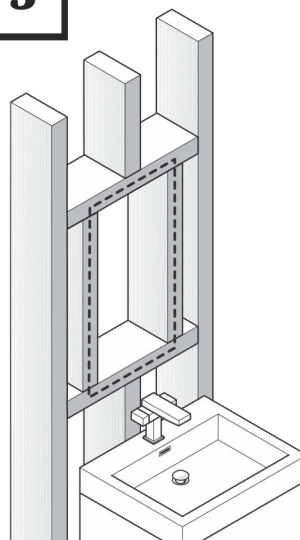
Draw the perimeter of the medicine cabinet on the wall.

2



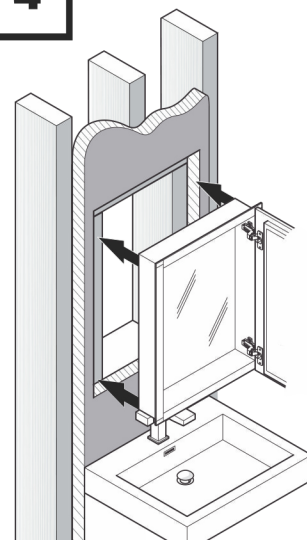
Cut the marked perimeter with appropriate tool.

3



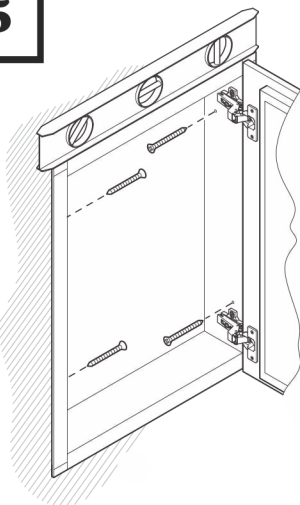
Frame the cutout opening.
(See Illustration below)

4



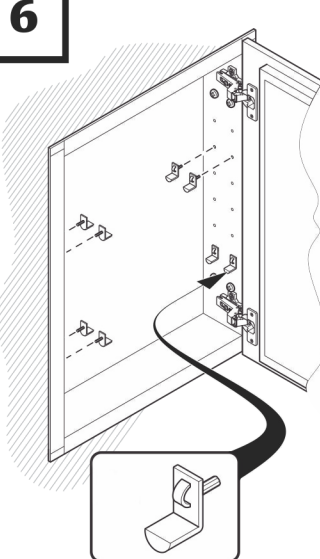
Place and hold the medicine cabinet in the cutout opening.

5



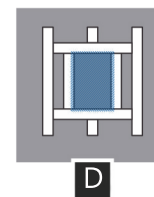
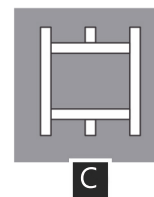
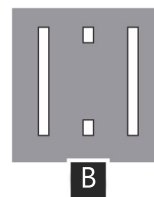
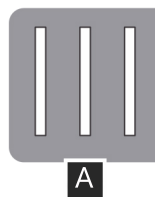
Level, then secure the medicine cabinet with the screws through the mounting holes into the framing studs.

6



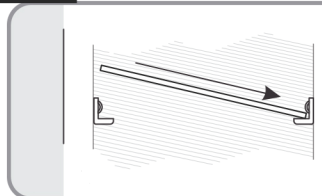
Choose the position for your shelves, then push and twist the snap-in pins into place.

4 STEPS TO FRAME THE CUTOUT OPENING

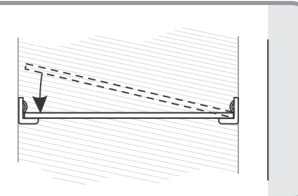


7

GLASS SHELF INSTALLATION



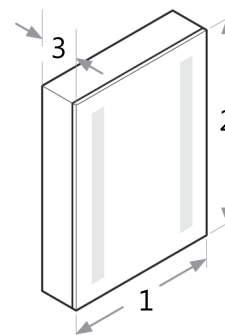
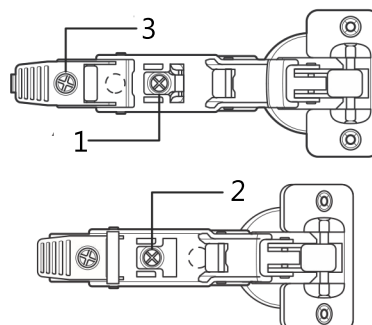
Push a side of the glass shelf into the left or the right pins.



Snap the glass shelf into the opposite side.

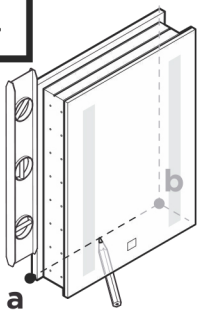
OPTIONAL DOOR ADJUSTMENT

Doors may need to be adjusted after the initial shipping of the cabinet. The cabinet doors have a three-way adjustment feature. Height, side-to-side, level and depth can be adjusted. With the hinge slightly closed you can access the middle screw for up/down adjustment. With the hinge fully extended you can access the front and back screws. These screws will move the door side to side and in and out.



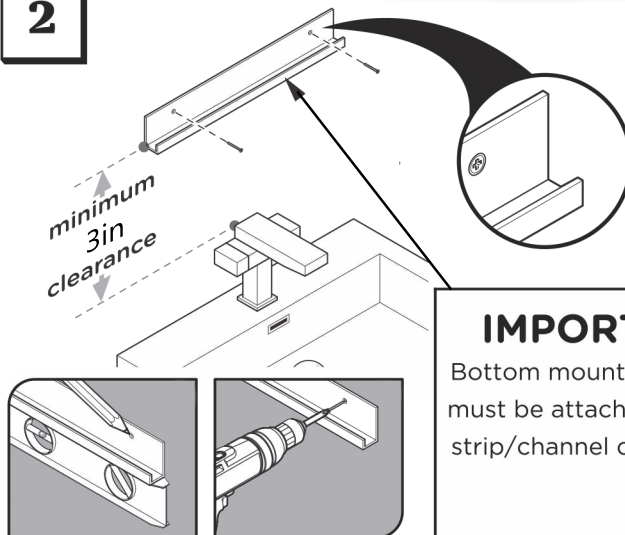
SURFACE MOUNT

1



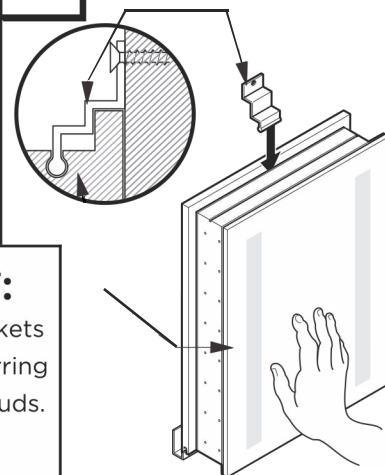
Level and mark the medicine cabinet's location on the wall from point **a** to point **b**.

2



Level and mark. Attach bottom bracket to the wall.

3

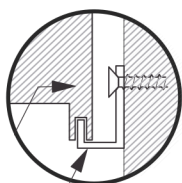


Insert top mounting bracket into the top of the cabinet

IMPORTANT:

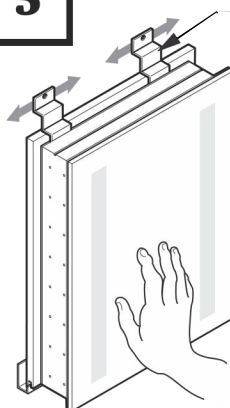
Bottom mounting brackets must be attached to furring strip/channel or wall studs.

4



With assistance, rest the medicine cabinet on the bottom mounting bracket and hold it in place.

5

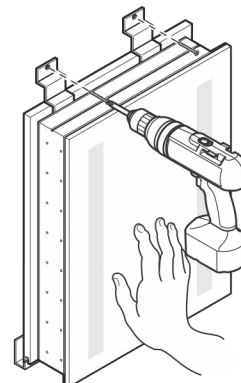


You can slide top mounting brackets to the left or right to achieve a desired position.

IMPORTANT:

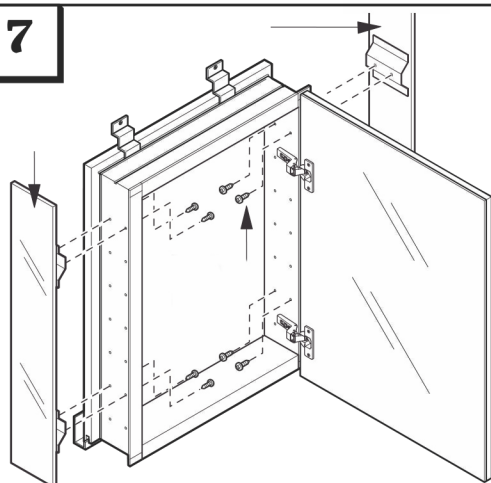
Top mounting brackets must be attached to furring strip/channel or wall studs.

6



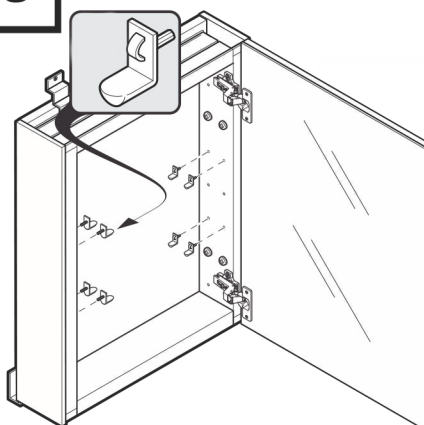
Attach the top mounting brackets to the wall using a drill.

7



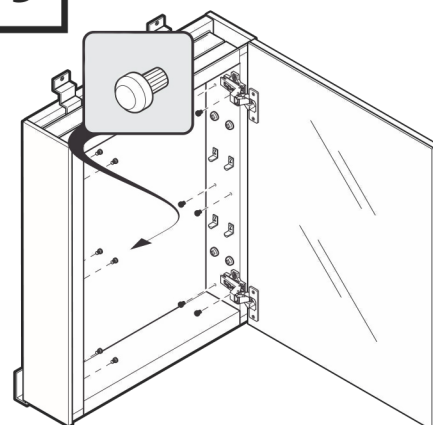
Attach mirrored side panels to the medicine cabinet using a screwdriver and provided screws

8



Insert clear snap in shelf clips into holes on the sides of the cabinet.

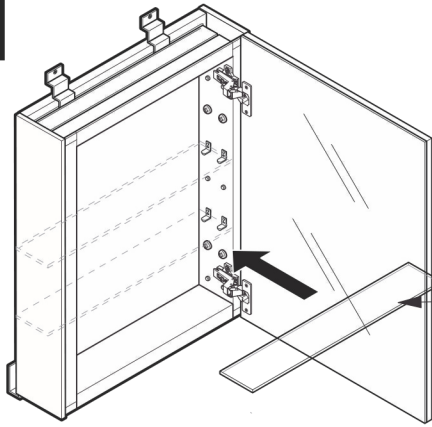
9



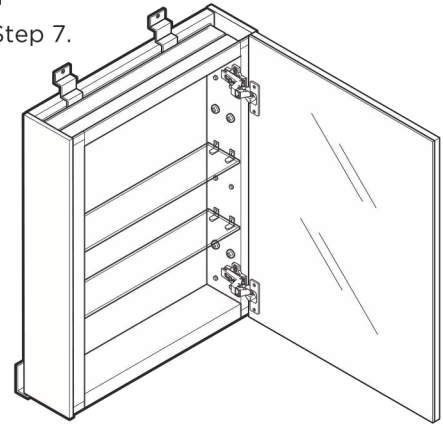
Insert clear plugs into the remaining/unused holes of the cabinet.

SURFACE MOUNT

10



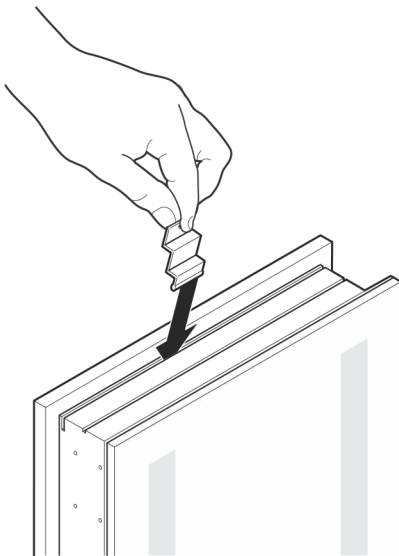
NOTE: For more details on the shelf installation please refer to Page 5, Step 7.



Connect the glass shelves (C) to the cabinet by pushing the side of the shelf in the left or right clip and snapping the shelf down.

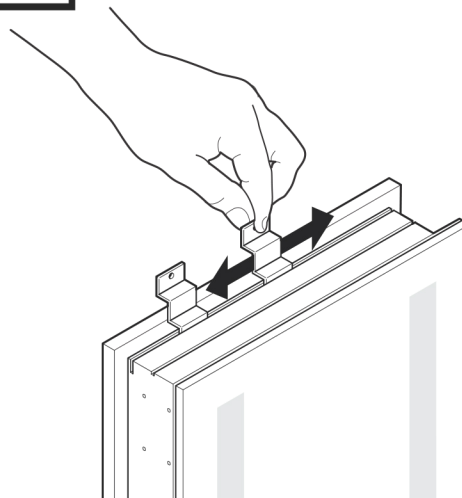
MOUNT BRACKET

1



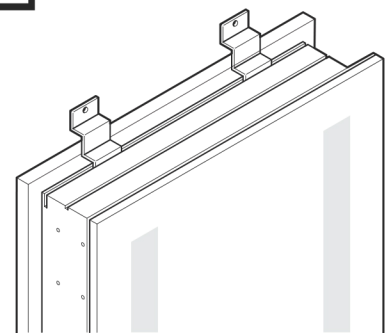
Slide top brackets into channel at the top of the cabinet.

2



Make sure top brackets are locked in the grooves.

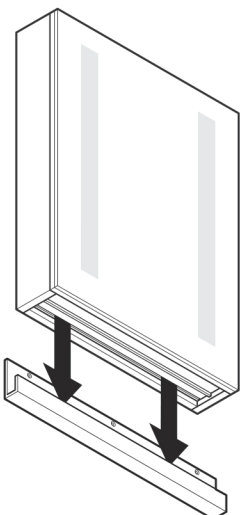
3



IMPORTANT:

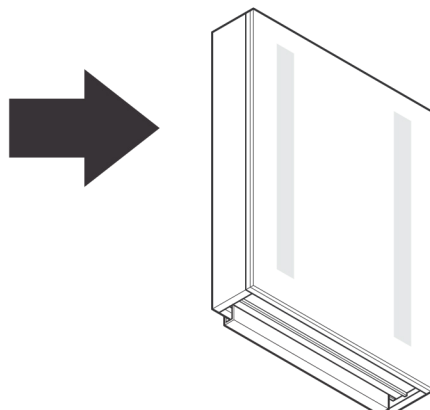
Top mounting brackets must be attached to furring strip/channel or wall studs.

4



IMPORTANT:

Make sure cabinet is leveled and fully inserted into the groove of the bottom bracket.



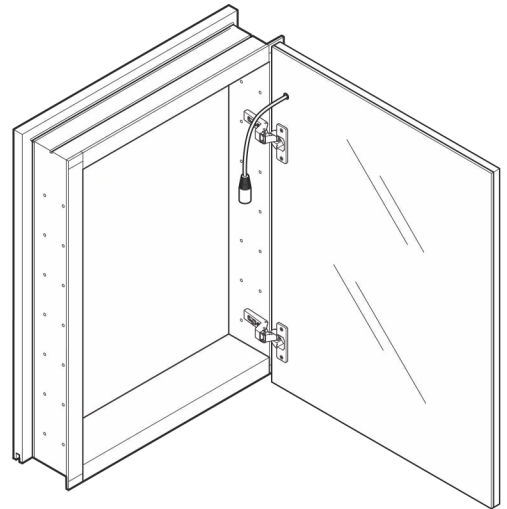
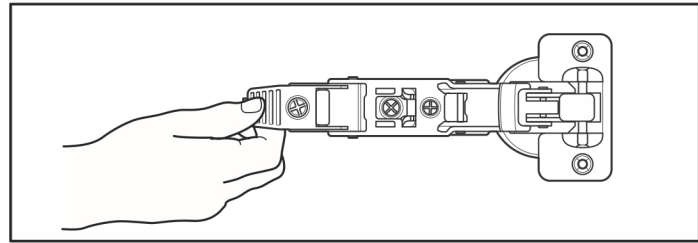
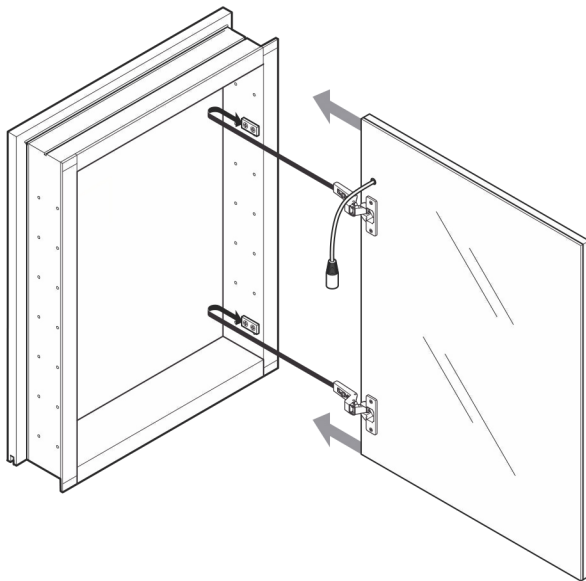
5

Test the fit of the cabinet before Final assembly.

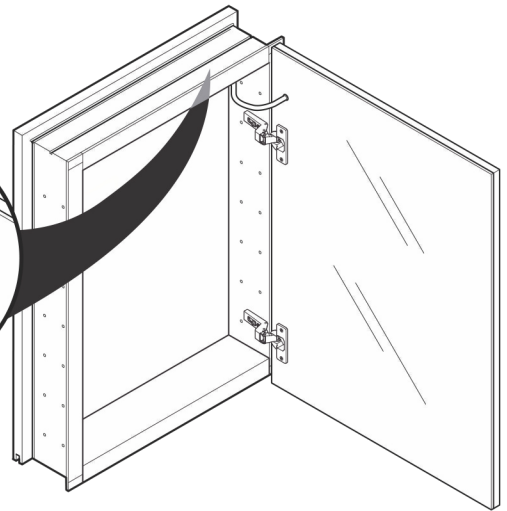
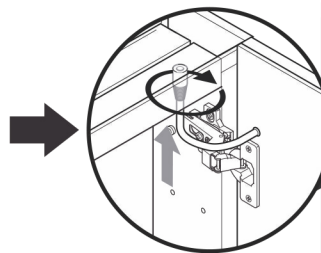
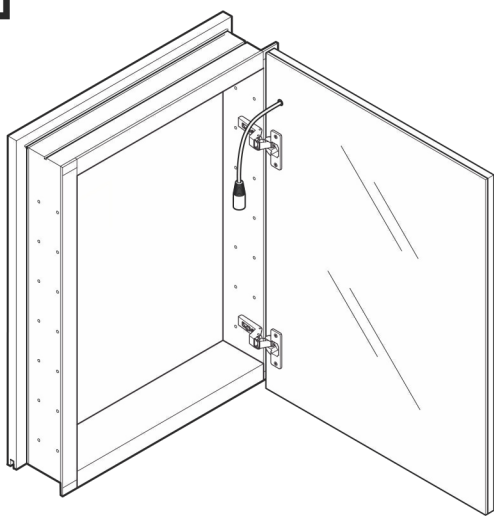
ELECTRIC WIRING: Be sure to provide enough wire to make the proper and safe connection to the Field/Power (see Page 5 for electrical connection instructions).

LAST STEPS

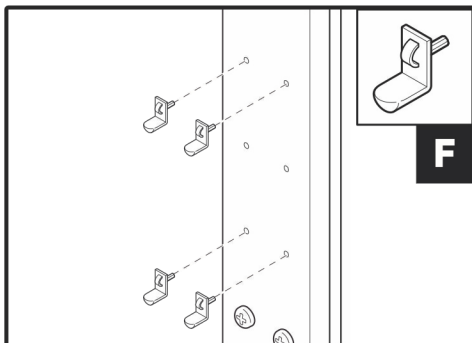
- 1** Slide the doors into place by pinching the end of the hinge.



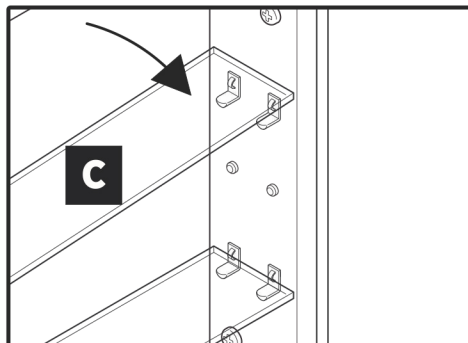
- 2** Plug the door into the cabinet.



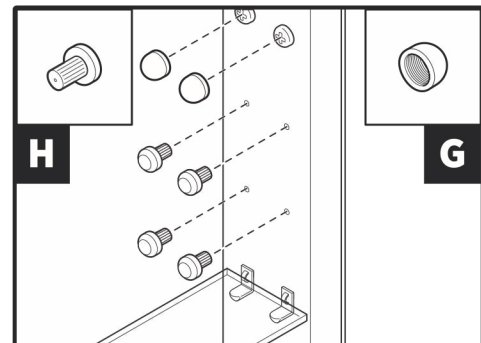
- 3a.** Insert clear snap in shelf clips (F) into holes on the sides of the cabinet (A).



- 3b.** Push the side of the shelf (C) in the left or right clip and snap the shelf (C) down.



- 3c.** Insert clear plugs (H) into the remaining or unused holes, then cover screw heads with the screw cups (G).



3D Lighting and Dimmer Switch

Touch the Light button in order to turn the lighting mechanism on.

Touch the light button again in order to chose the desired light.(cool,warm,mixed)

Touch and Hold the button in order to dim the currently selected light.

How to Customize the Digital Clock

Facing the mirror place your finger on the on/off button.

Press and hold the button to engage the clock's program mode:

In program mode, the clock will go through 4 number fields with a 3 second break inbetween.

To set the time, press the button again while the number is flashing.