

**PRODUCT SPECIFICATIONS**

Elkay Asana® Stainless Steel 17" x 12" x 6-1/2", Single Bowl Dual Mount Bathroom Sink. Sink is manufactured from 18 gauge 304 Stainless Steel with a Hammered Mirror finish, Rear Center drain placement, and Full spray sides and bottom.

|                              |                             |
|------------------------------|-----------------------------|
| <b>Installation Type:</b>    | Drop-in, Undermount         |
| <b>Material:</b>             | 304 Stainless Steel         |
| <b>Finish:</b>               | Hammered Mirror             |
| <b>Gauge:</b>                | 18                          |
| <b>Sound Deadening:</b>      | Full spray sides and bottom |
| <b>Number of Bowls:</b>      | 1                           |
| <b>Sink Dimensions:</b>      | 17" x 12" x 6-1/2"          |
| <b>Bowl 1 Dimensions:</b>    | 14-1/2" x 9-1/2" x 6-1/2"   |
| <b>Drain Size:</b>           | 1-1/2" (38mm)               |
| <b>Drain Location:</b>       | Rear Center                 |
| <b>Minimum Cabinet Size:</b> | 21"                         |
| <b>Mounting Hardware:</b>    | Included                    |
| <b>Cutout Template #:</b>    | <a href="#">1000001503</a>  |

Template is available for download at [elkay.com](#)



**Included with Product:** overflow Assembly

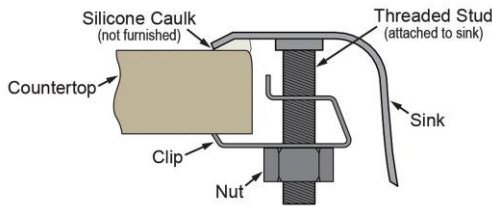
AMERICAN PRIDE. A LIFETIME TRADITION.

Like your family, the Elkay family has values and traditions that endure. For almost a century, Elkay has been a family-owned and operated company, providing thousands of jobs that support our families and communities.

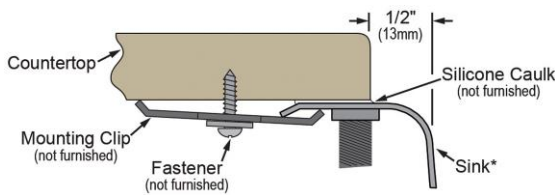
**Product Compliance:** ADA & ICC A117.1  
ASME A112.19.3/CSA B45.4

**Installation Profile:**

**DROP-IN**



**UNDERMOUNT - 1/2" REVEAL**



\*Designed to affix to the underside of any solid surface countertop.



Sinks are listed by IAPMO® as meeting the applicable requirements of the Uniform Plumbing Code®, International Plumbing Code®, and National Plumbing Code of Canada.

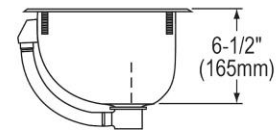
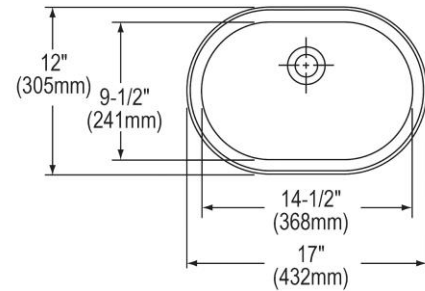


Complies with ADA & ICC A117.1 accessibility requirements when installed according to the requirements outlined in these standards.

[Clean and Care Manual \(PDF\)](#)

[Installation Instructions \(PDF\)](#)

[Limited Lifetime Warranty \(PDF\)](#)



PART: \_\_\_\_\_ QTY: \_\_\_\_\_

PROJECT: \_\_\_\_\_

CONTACT: \_\_\_\_\_

DATE: \_\_\_\_\_

NOTES: \_\_\_\_\_

APPROVAL: \_\_\_\_\_

In keeping with our policy of continuing product improvement, Elkay reserves the right to change product specifications without notice. Please visit [elkay.com](#) for the most current version of Elkay product specification sheets. This specification describes an Elkay product with design, quality, and functional benefits to the user. When making a comparison of other producers' offerings, be certain these features are not overlooked.

**OPTIONAL ACCESSORIES**

|        |       |
|--------|-------|
| Drain: | LK174 |
|--------|-------|

*In keeping with our policy of continuing product improvement, Elkay reserves the right to change product specifications without notice. Please visit [elkay.com](http://elkay.com) for the most current version of Elkay product specification sheets. This specification describes an Elkay product with design, quality, and functional benefits to the user. When making a comparison of other producers' offerings, be certain these features are not overlooked.*