



**Soho®**  
Wall-Mount Bathroom Sink  
**K-2053-R**

**Features**

- Made from premium materials that withstand high-volume usage.
- 20" (508 mm) x 18" (457 mm).
- Faucet not included.
- Drilled for concealed arm carrier.
- Includes soap dispenser drilling on right.

**Material**

- Vitreous china.

**Installation**

- Wall-mount.

**Recommended Products/Accessories**

K-8998 P-Trap  
K-23726 Drain treatment  
K-23725 Cast iron cleaner

**Included Components**

Additional Components:  
Hanger(s)



ADA

CSA B651

OBC

**Codes/Standards**

ASME A112.19.2/CSA B45.1  
ADA  
ICC/ANSI A117.1  
CSA B651  
OBC



**KOHLER® One-Year Limited Warranty**

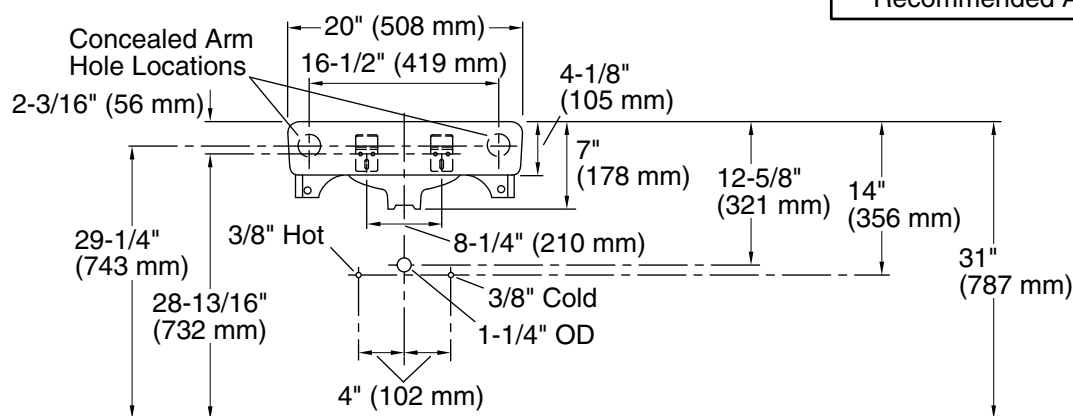
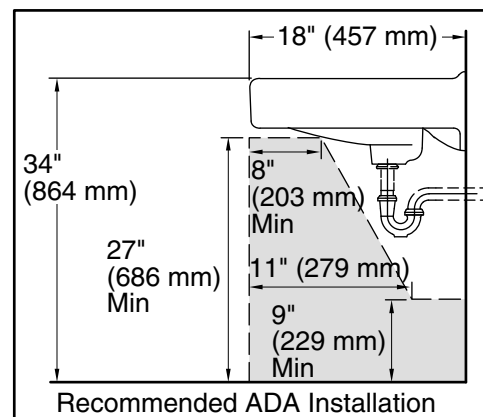
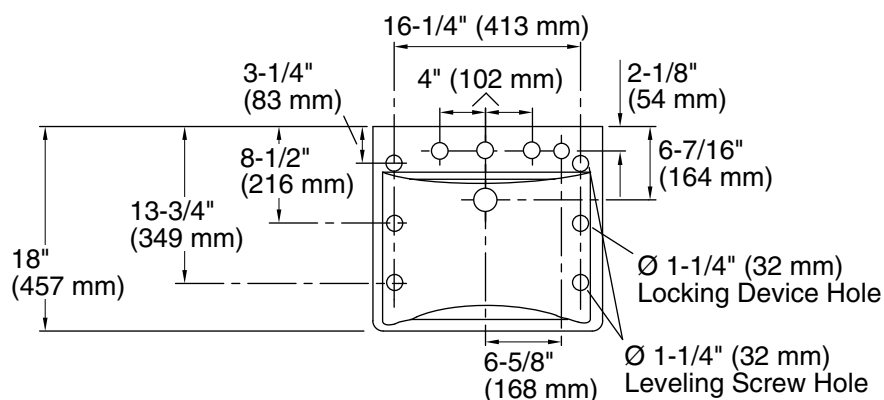
See website for detailed warranty information.

**Available Colors/Finishes**

*Color tiles intended for reference only.*

**Color Code Description**

	0	White
	47	Almond



Standard Installation

## Technical Information

All product dimensions are nominal.

Bowl configuration: Single

Installation: Wall-mount

Bowl area (Center): Length: 18" (457 mm)  
Width: 13" (330 mm)  
With overflow: Yes  
Water depth: 4-7/8" (124 mm)

Number of deck holes: 4

Faucet hole spacing: 8" (203 mm)

Faucet hole(s): 1-3/8" (35 mm)

Soap/Lotion hole: 1-1/4" (32 mm)

Drain hole: 1-3/4" (44 mm)

## Notes

Install this product according to the installation instructions.

If an arm carrier is used, select a soap dispenser with a 1" (25 mm) maximum shank diameter to avoid interference with the arm carrier.

Use a soap dispenser with adequate shank length to extend through the 4-1/8" (105 mm) sink thickness.

ADA, OBC, CSA B651 compliant when installed to the specific requirements of these regulations.