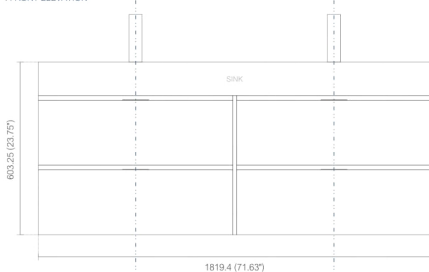


72" DOUBLE SINK

Dimensions:	width	depth	height
inches	71.63"	18.5"	23.75"
mm	1819	470	603

NOTE: DIMENSIONS AND TECHNICAL DETAILS ARE SUBJECT TO CHANGE WITHOUT NOTICE

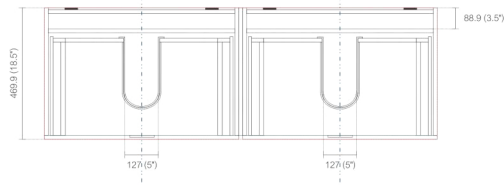
FRONT ELEVATION



BACK ELEVATION



TOP ELEVATION



. Adjustments

The options for height adjustment depend on the type of base plate. All adjustments can be made independent of one another.

For depth adjustment, select base plates have worm gear adjustment access through the hinge arm.



Depth adjustment via worm gear



Height adjustment via base plate

Reveal

The reveal (R) is the distance required between two doors or between the door and side wall of the cabinet to allow sufficient space for opening the door. The required reveal width (R) depends on the thickness of the door.

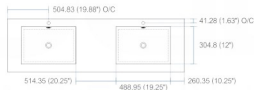
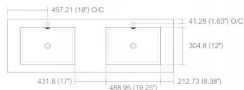
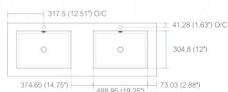
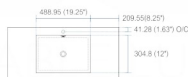
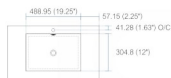
Most cabinet makers prefer a reveal (R) of between 3mm and 6mm.



Half Overlay Door



NOTE: DIMENSIONS AND TECHNICAL DETAILS ARE SUBJECT TO CHANGE WITHOUT NOTICE



16" SINK	width	length	height	depth
inches	16.0"	16.0"	4.0"	3.38"
mm	406.4	406.4	101.6	85.73

18" SINK	width	length	height	depth
inches	18.0"	10.25"	4.0"	3.38"
mm	457.2	257.18	101.6	85.73

24" SINK	width	length	height	depth
inches	23.63"	18.5"	4.0"	4.0"
mm	600.08	469.9	101.6	101.6

30" SINK	width	length	height	depth
inches	29.5"	18.5"	4.0"	4.0"
mm	749.3	469.9	101.6	101.6

36" SINK	width	length	height	depth
inches	35.75"	18.5"	4.0"	4.0"
mm	908.05	469.9	101.6	101.6

40" SINK	width	length	height	depth
inches	39.5"	18.5"	4.0"	4.0"
mm	1003.3	469.9	101.6	101.6

48" SINK	width	length	height	depth
inches	47.25"	18.5"	4.0"	4.0"
mm	1200.15	469.9	101.6	101.6

60" S SINK	width	length	height	depth
inches	59"	18.5"	4.0"	4.0"
mm	1498.6	469.9	101.6	101.6

60" D SINK	width	length	height	depth
inches	59"	18.5"	4.0"	3.75"
mm	1498.6	469.9	101.6	95.25

72" SINK	width	length	height	depth
inches	71.63"	18.5"	4.0"	4.0"
mm	1819.28	469.9	101.6	101.6

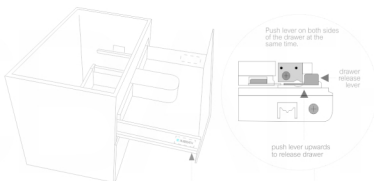
80" SINK	width	length	height	depth
inches	79"	18.5"	4.0"	4.0"
mm	2006.6	469.9	101.6	101.6

HOW TO ASSEMBLE

Vanity cabinet | removing+adjusting drawers

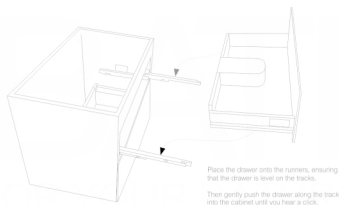
To remove the drawer/s

- * Extend the drawer
- * Look for the release levers **under the drawer, on the sliding bar**
- * To release and remove drawer, simultaneously **push the drawer release levers upwards** (both sides at the same time) and slide/lift the drawer away from the tracks.
- * Repeat for each drawer



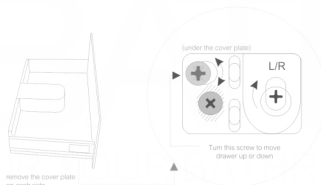
To replace the drawer/s

- * Fully extend the drawer runner on each side of the cabinet
- * Place the drawer onto the runners ensuring that the drawer is levelled on the tracks, and continue to hold in place (otherwise, the drawer will fall).
- * Keeping the drawer levelled, gently push the drawer along the runners into the cabinet until you hear a click.



To adjust the drawer/s

- * To move the drawer up or down, turn the side screw located under the cover plate on each side of the drawer.



These instructions show a vanity cabinet with two drawers. However, the instructions apply to all cabinets and all sizes.

The characteristics and drawer mechanisms are the same for all units.

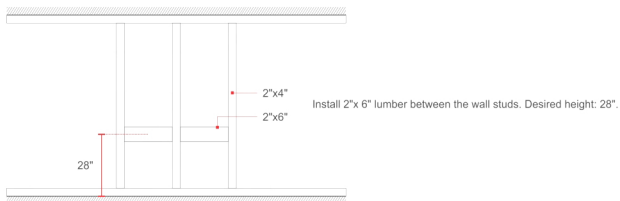
How to Install a Wall-Hung Vanity

INSTALLATION GUIDE

Tools Required for Assembly



Wall Preparation



Vanity Installation

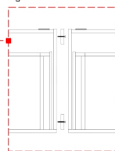
1. Remove all Drawers from the Cabinet sections.
2. Install matching wood spacers provided on one section of the vanity.
Please ensure that the front spacer is installed flush with the Cabinet edge, not the drawers. (See Figure 1)
Use screws to attach the wood spacers to the cabinet
3. Align and level mounting Brackets according to horizontally reinforcement lumber and desired cabinet height.
4. Mount Vanity on to the wall brackets.
5. Add a dap of silicone to the corners of the Cabinet (See Figure 2)
6. Gently position and align Counter Top Sink onto Vanity.



Figure 2

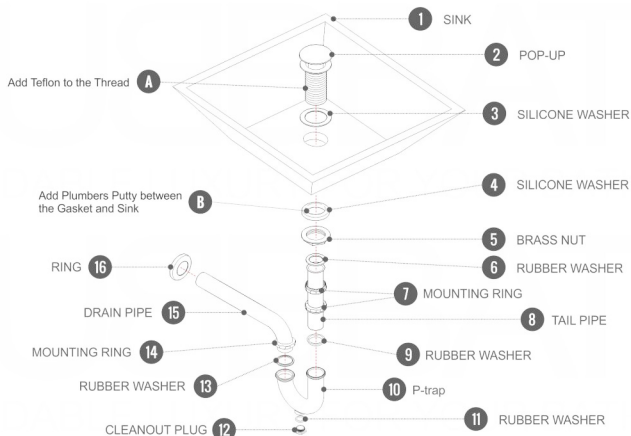


Figure 1



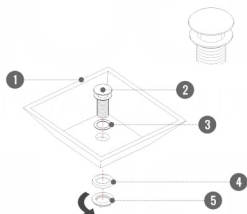
Pop-Up / P-trap Installation Instructions

INSTALLATION GUIDE



FOR SINKS WITHOUT OVERFLOW

FOR SINKS WITH OVERFLOW



OR

