

TAYLOR 66" DOUBLE SINK BASE CABINET

ARIEL

Q066D



BASE CABINET DIMENSIONS

66" W x 21.75" D x 34.5" H

FEATURES

- Solid wood frame & plywood panels
- Dovetail drawers and joints
- Soft closing doors & drawers

HARDWARE FINISHES



Brushed Nickel



Satin Brass



Matte Black



Polished Chrome

AVAILABLE COLORS



White

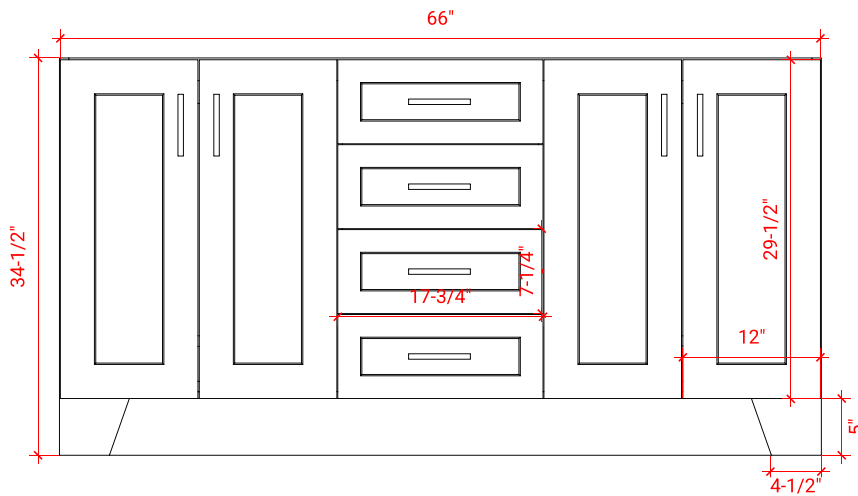


Grey

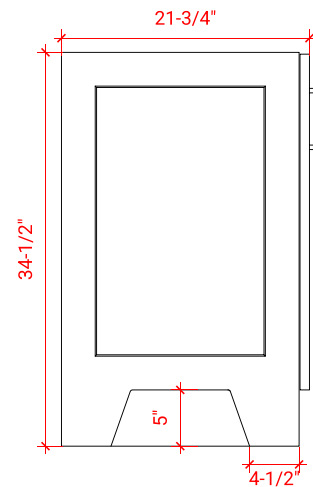


Midnight Blue

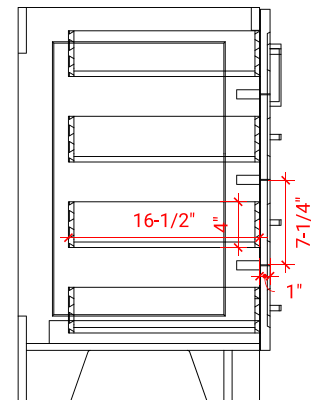
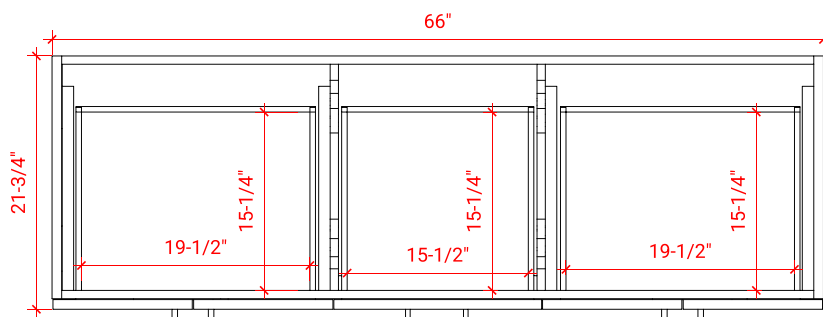
FRONT VIEW



SIDE VIEW



PLAN VIEW



ARIEL

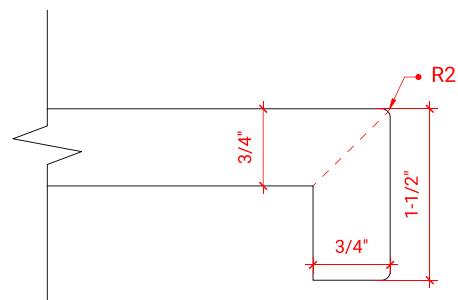
66.25" W x 22" D x 1.5" H

- Solid countertop with mitered edges & seams
- Undermount white oval sink
- Pre-drilled for 8" widespread faucet

- Countertop
- Matching Backsplash
- Oval Sinks

FIG. 1

FIG. 2



Isometric view of a rectangular plate with two circular holes. The dimensions are indicated by red lines and text:

- Length: $66\frac{1}{4}"$
- Width: $22"$
- Thickness: $1\frac{1}{2}"$
- Height of the raised edge: $4"$