

CONVENIENCE CONCEPTS

NORDIC CONSOLE TABLE 227901



ASSEMBLY INSTRUCTIONS

We have designed our furniture with you , the customer in mind . Our clear , easy to follow , step by step instructions will guide you through the project from start to finish . Feel confident that this will be a fun and rewarding project . The final product will be a quality piece of furniture that will go together smoothly and give years of enjoyment .



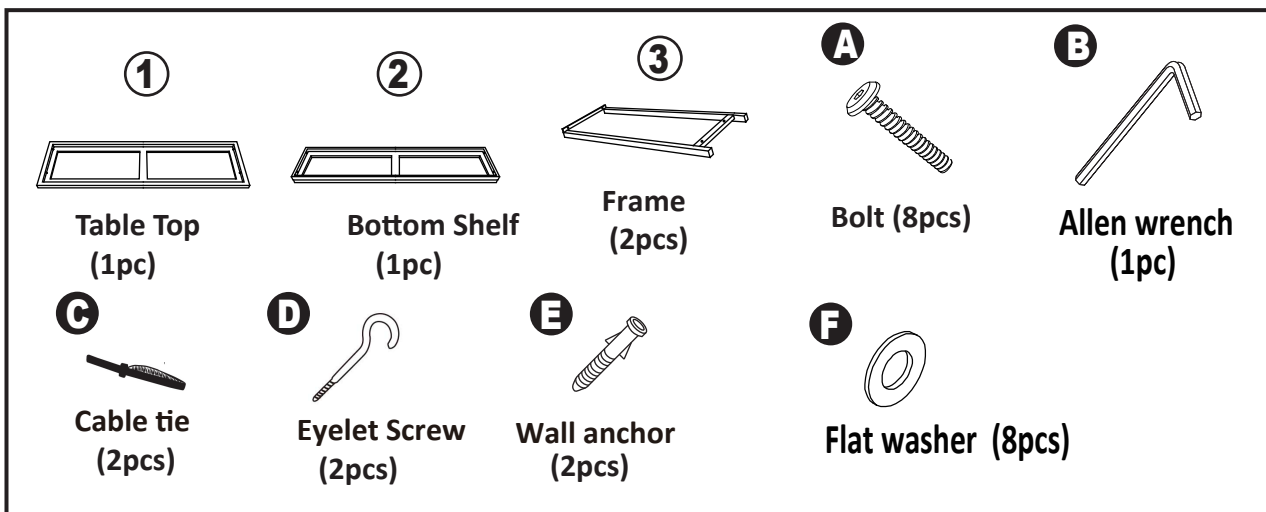
Please do not return to the store

Broken or missing parts?

Need help with assembly?

If you have any questions just call 1-800-468-6447 or email us at parts@convenience-concepts.com

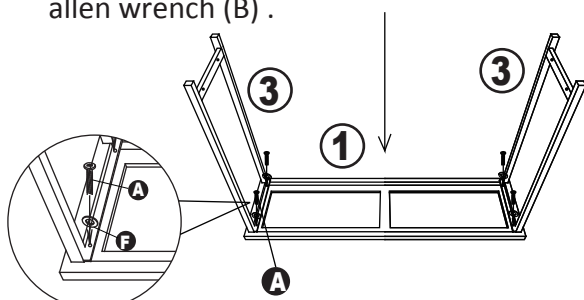
Accessories list



Assembly instructions

Step:1

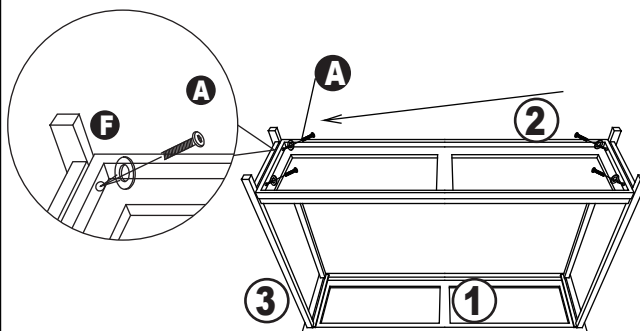
1. Assemble face down on carpet or soft surface.
2. Connect frame **3** to table top **1** using flat washers (F) bolts (A) and allen wrench (B).



*match the colors up to assemble.

Step:2

1. Connect bottom shelf **2** to unit as shown using flat washers (F) bolts (A) and allen wrench (B).



*match the colors up to assemble.

Step:3

1. Drill holes slightly smaller than anchors **E** into drywall and gently tap anchors into holes.
2. Insert eyelet screws **D** into anchors and fasten unit to wall using cable ties **C**.

