

1. Ceiling arm mounting plate
2. Olive
3. Locking nut
4. Ceiling trim
5. Ceiling arm
6. Empty fixed showerhead
7. Fixing screws and wall plugs (not shown)

Instructions, guarantee, template etc.

Fig.2

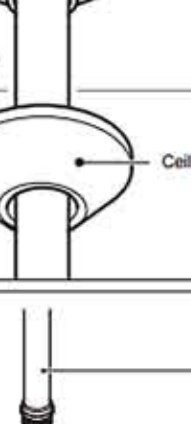


Fig.3

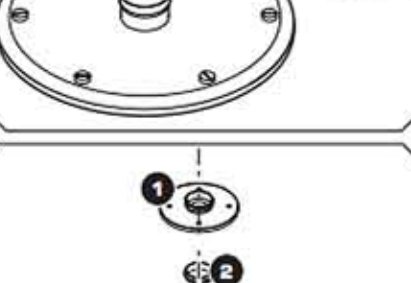


Fig.4



Fig.5

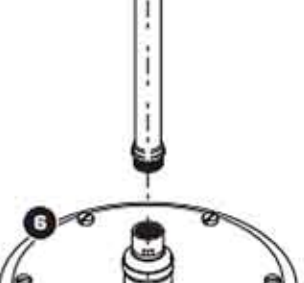


Fig.6

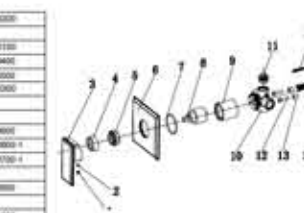
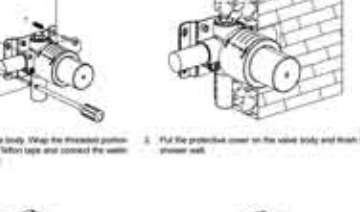
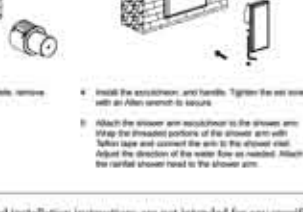


Fig.7



VALVE EXPLODED VIEW:

1	5010101000000
2	501010004
3	5010101000100
4	5010101000400
5	5010101000000
6	5010101000000
7	5010101000000
8	5010101000000
9	5010101000000
10	5010101000000
11	5010101000000
12	5010101000000
13	5010101000000
14	5010101000000
15	5010101000000
16	5010101000000
17	5010101000000



INSTALLATION:

1. Install the valve body. Wrap the threaded portion of the pipe with Teflon tape and connect the water inlet and outlet.

2. Put the protective cover on the valve body and finish the shower wall.

3. When the treated wall is complete, remove the protective cover.

4. Install the shower arm. Tighten the set screw with an Allen wrench to secure.

5. Attach the shower arm to the shower arm. Wrap the threaded portion of the shower arm with Teflon tape and connect the arm to the shower wall. Adjust the direction of the water flow as needed. Attach the rainfall shower head to the shower arm.

This General diagram and installation instructions are not intended for any specific model, but is presented as a general guideline for installations!