

TV24BRV (shown with Tekwood Vintage)



FEATURES

- Table top frame and skirt are powder-coated aluminum
- Electroplated steel post and base provide maximum stability and strength
- Leg end caps provide protection against marring and scratching of surfaces
- Easy assembly
- Seats 2
- Pair with Travira or Argento bar seating
- Low-maintenance and ideal for outdoor applications

MATERIALS

Electroplated galvanized steel is strong and durable. Powder-coating adds an additional level of weather resistant strength by protecting against rust and corrosion. Tekwood is a wood-alternative developed from polystyrene providing the look of wood without the weathering process. Lite-Core is an engineered panel of natural granite with an aluminum honeycomb core resulting in a beautiful surface that is durable and lighter in weight than solid stone.

Umbrella Hole	Base Width	Assemb. Width	Assemb. Depth	Assemb. Height	Assemb. Weight Lbs.
No	17"	24"	24"	41"	46 (Tekwood) 62 (Lite-Core)
	Carton # of Boxes	Carton Width	Carton Depth	Carton Height	Carton Weight Lbs.
	3	20"	20"	3"	30
		4"	43"	4"	9
		25"	25"	5"	16 (Tekwood)
		25"	25"	5"	32 (Lite-Core)

CONSTRUCTION

Welded steel

HARDWARE

Stainless steel

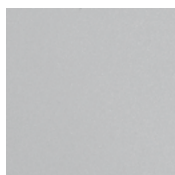
SHIPPING

Ships via small parcel
Knocked down

ASSEMBLY

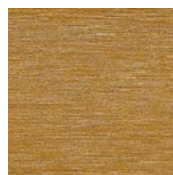
Some assembly required

FRAME



FLINT
ELECTROPLATED
STEEL F

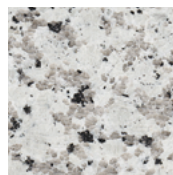
TABLE TOP FINISHES



NATURAL
TEKWOOD N



VINTAGE
TEKWOOD V



ASH
LITE-CORE H



CHARCOAL
LITE-CORE L

For Quick Ship or Extended Lead Time SKU status, please call 877-866-3331 or email sales@oxfordgarden.com.