

Flood Sensor User Manual VGFS001WHT

Note: If you have any questions about the APP or device, please click Profile->Feedback to fill your feedback to us in APP.

1. PRODUCT OVERVIEW

VGFS001WHT is a smart flood sensor (water leak sensor) based on wireless solution. While a water leak happens, the device will wake up the Wi-Fi connection to Wi-Fi router, send an alarm signal to your mobile phone via Wi-Fi network, in the case that the APP internet is available locally or remotely. The alarm is selectable as a notification on your mobile phone with bar display, banner with tone, vibration based on the APP Notification setting on your Mobile Phone. There is an around 5-second delay from the state changes to notification on your mobile phone depending on the internet connection quality. This device will buzz if a water leak is detected till the leak is removed. This device is working as a scene to trigger other device action that are compatible in same APP such as to turn on/off plug and bulb.

2. PRODUCT FEATURES

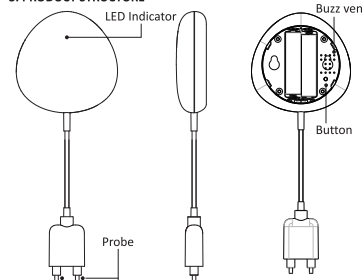
- Support buzz in water leak situation
- Working in 802.11 b/g/n;
- Support EZ (Smart Config) and AP (Access Point) mode for Wireless connection;
- Support water leak detection;
- Support battery level detection and low battery alarm;
- Support 2xAAA battery powered;
- Wall mounted installation with extended detecting cable to 2 meters;
- Led indicates the working state;
- Compliant with CE, FCC and ROHS;

How to Get the device working:

- Make sure your Wi-Fi network work in 802.11 b/g/n 2.4GHz and internet available;
- Download the APP from Apple store or Google Play;
- Register an account in APP and login with your email address or Mobile phone number;
- Setup the device Wi-Fi connection;
- Mount device on specified location;
- Test and check the Device and APP working state;

2

3. PRODUCT STRUCTURE



Button activities and LED indicator:

- LED indicator: indicate the device working state:
 - Fast blinking in Red: EZ mode (Smart config) for Wi-Fi configuration;
 - Slow blinking in Red: AP Mode for Wi-Fi configuration;
 - Flash once in Blue: Wi-Fi connected and water leak detected;
 - Flash once in Dual-Color: Wi-Fi disconnected and water leak detected;
- Probe: extend to detect the water leak;
- Buzz vent: Sounds while water leak detected;
- Button: Press and hold the button for 5 seconds to enter into Wi-Fi connection (or configuration). The red LED indicator will blink rapidly (EZ mode) or slowly (AP mode). EZ mode connection is set as default in Wi-Fi configuration. Press and hold the button for 5 seconds will enable the device switch between EZ mode and AP mode.

3

Note:

- To check the device is working or not: short-cut the probes, the LED indicator will flash once and the Buzz will work;
- To check the device is Wi-Fi connected or not: short-cut the probes, if the LED indicator turns purple once, the device is non Wi-Fi connected. If the LED indicator turns blue once, the device is Wi-Fi connected.

4. SPECIFICATIONS

Power supply	2*AAA battery, 3V
Radio frequency	2.4GHz—2.484GHz
Radio protocol	IEEE802.11 b/g/n
Transmitting power	802.11b:17dBm±2dBm@1Mbps 802.11g:15dBm±2dBm@54Mbps 802.11n:13dBm±2dBm@MCS7_HT20
Receiving sensitivity	802.11b:-91dBm@11Mbps 8%PER 802.11g:-75dBm@54Mbps 10%PER 802.11n:-72dBm@MCS7_HT20 10%PER
Vector error EVM	802.11b:±35% 802.11n:-28dBm max.
Working temperature	-10 ~ +40°C
Storage temperature	-20 ~ +60°C
Relative humidity	8% ~ 80%

5. INSTALL APP AND REGISTER AN ACCOUNT

5.1 Scanning the following QR code to download APP for Android and iOS System. Or you can download the APP named as "Smart Life" from Apple store and Google Play.

5.2 Launch the APP and register an account with your email address then login;

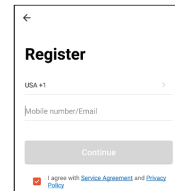
4

1) Download APP and install



Android & iOS

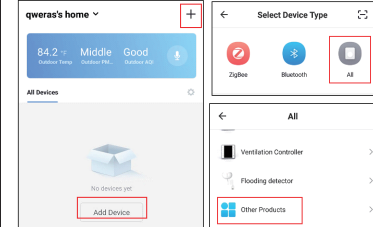
2) Register the APP



5

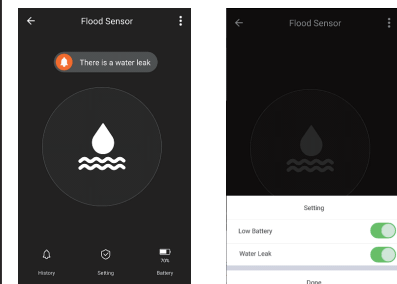
6. ADD AND REMOVE DEVICE IN YOUR APP ACCOUNT

6.1 Launch the APP and login. Click ADD DEVICES -> All -> Other products to start the device adding.



5

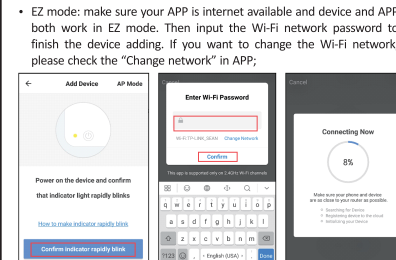
- Press the device button for 5 seconds to enter the Wi-Fi configuration state (fast blinking in EZ mode or slow blinking in AP mode).
- Input the Wi-Fi SSID and password of the Wi-Fi network that the device is going to work with, then waiting around 30 seconds for the Wi-Fi configuration finished until the device is successfully added;
- Change the device name and share it within APP account as you want.
- Click the device just added to launch the device state UI to check the state, battery level, record history and the APP notification setting.



6

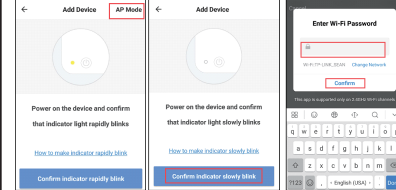
Note:

- Make sure the device and APP work in same Wi-Fi configuration mode, both in EZ mode or in AP mode. Refer to Section 3 product description LED indicator part to check which state the device is working with.
- In some case that the EZ mode is not working Wi-Fi network, AP mode is the only option.

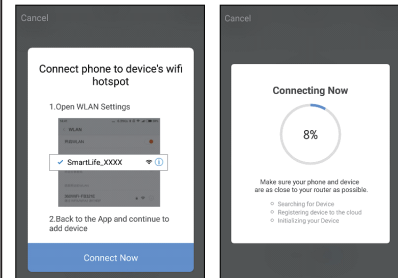


7

- AP mode: Click AP Mode, make sure your APP is internet available and device and APP both work in AP mode. Confirm to input the SSID and Password of Wi-Fi network, then select the Device AP name with SmartLife-xxxx in Wi-Fi list then back to App to finish the device adding.



7

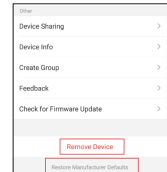


8

After the device is successfully added to APP account, the LED will turn off. Using the methods mentioned in LED indicator to check the device is successfully added or not. If not, please repeat the Device adding again.

6.6 Remove device

1) Click "Remove Device" to remove this device from your account; click "Restore manufacturer Defaults" to remove the device from your account and clear the history record in cloud.

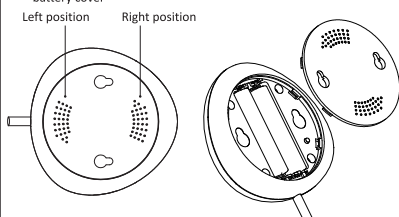


2) After remove device or Restore manufacturer defaults from the APP, repeating the Device adding steps to your account;

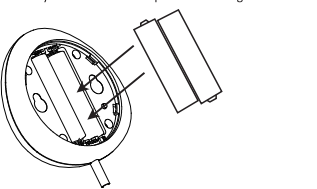
7. INSTALLATION

7.1 AAA battery installation

1) Hold the battery cover and rotate it counter-clockwise to open the battery cover

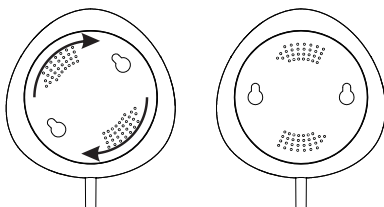


2) Put 2xAAA battery in with the correct positive and negative electrode.



9

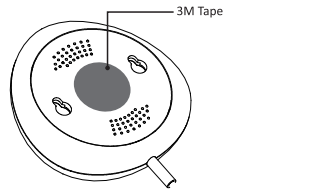
3) Close the cover and turn it clockwise



7.2 Mount the device on the wall

There are two methods to mount the device on the wall.

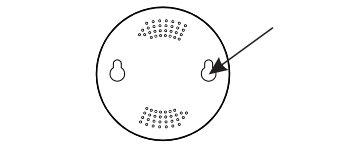
- 3M Tape mode
- Stick the included self-adhesive pads to the bottom of the device.
- Peel off the protective layer of the sticker. Stick the device onto the wall.



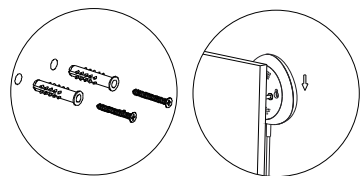
10

• Screw mode

1) Mark a hole location as below picture and drill a hole on the wall accordingly.

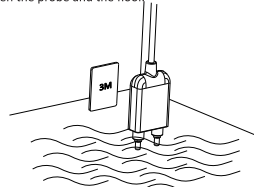


2) Screw the two bolts within the package on the wall leaving the around 5~8mm bolt margin out of the wall. Then hang the device on the two bolts.



11

7.3 Install the probe case on the wall with a 3M tape, keep no gap between the probe and the floor.



8. FCC NOTICE (for USA)

This device complies with part 15 of the FCC Rules. Operation is subject to the following two conditions:
1) This device may not cause harmful interference
2) This device must accept any interference received, including interference that may cause undesired operation.

The manufacturer is not responsible for any radio or tv interference caused by unauthorized modifications or change to this equipment. Such modifications or change could void the user's authority to operate the equipment.

This equipment has been tested and found to comply with the limits for a Class B digital device, pursuant to part 15 of the FCC Rules. These limits are designed to provide reasonable protection against harmful interference in a residential installation. This equipment generates, uses and can radiate radio frequency energy and, if not installed and used in accordance with the instructions, may cause harmful interference to radio communications. However, there is no guarantee that interference will not occur in a particular installation. If this equipment does cause harmful interference to radio or television reception, which can be determined by turning the equipment off and on, the user is encouraged to try to correct the interference by one or more of the following measures:

12

- Reorient or relocate the receiving antenna.
- Increase the separation between the equipment and receiver.
- Connect the equipment into an outlet on a circuit different from that to which the receiver is connected.
- Consult the dealer or an experienced radio/TV technician for help.

RF Warning statement:

To maintain compliance with FCC's RF exposure guidelines, this equipment should be installed and operated with a minimum distance of 20cm between the radiator and your body

9. FAQ

Q: The device fails to be added in account?

1. Make sure the Wi-Fi network is 802.11 b/g/n 2.4GHz;
2. Make sure the device works with APP in same Wi-Fi Configuration mode: EZ or AP;
3. Make sure the input SSID and password of the Wi-Fi network are correct;
4. Make sure Wi-Fi internet connection is working fine;
5. Make sure the device is powered on;

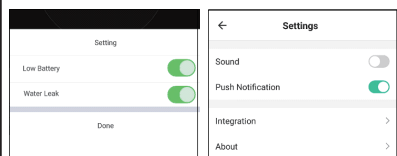
Q: The device state does not change while the water leak is detected?

1. Make sure the device is in your Main Device List in APP;
2. Make sure the device is powered on;
3. Make sure the Wi-Fi internet is work fine;
4. Make sure the Mobile phone internet connection is available;

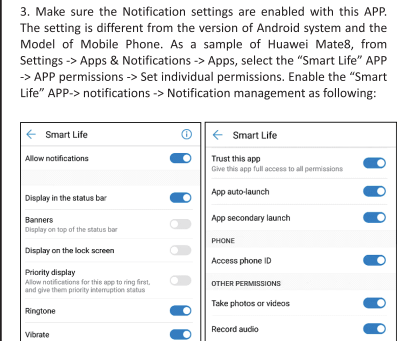
Q: The notifications can not be alerted on APP with my Android System?

1. Make sure the alarm setting in APP is enabled
2. Make sure the Push notification is enabled for this APP for Android system;

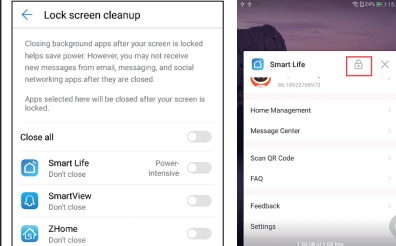
13



14

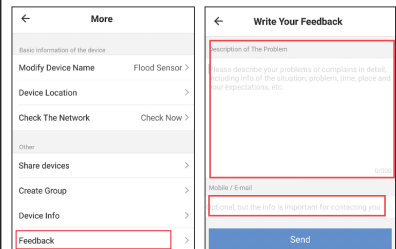


14



15

If you have any questions about the APP or device, please click Profile -> Feedback to fill your feedback to us in APP



Or Check the Profile -> FAQ to find some answers.