

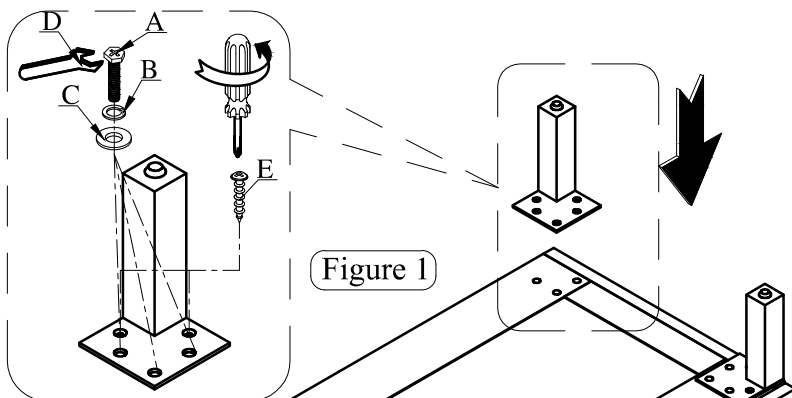


ASSEMBLY INSTRUCTION

Item: 6075-90016 Three-Drawer Nightstand

Thank you for purchasing this quality product. Be sure to unpack carefully looking for small parts which may have come loose during shipment.

Read all instruction and study the drawing carefully before starting the assembly process.

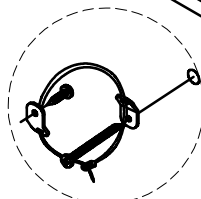


HARDWARE PACK				
NO	DRAWING	DESCRIPTION	SIZE	Q'ty
A		Hexagonal Bolt	φ1/4"*1"	12pcs
B		Lock Washer	φ1/4"	12pcs
C		Flat Washer	φ1/4"*19D	12pcs
D		Open Wrench	11mm	1pc
E		SCREW	8*5/8"	8pcs

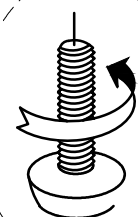
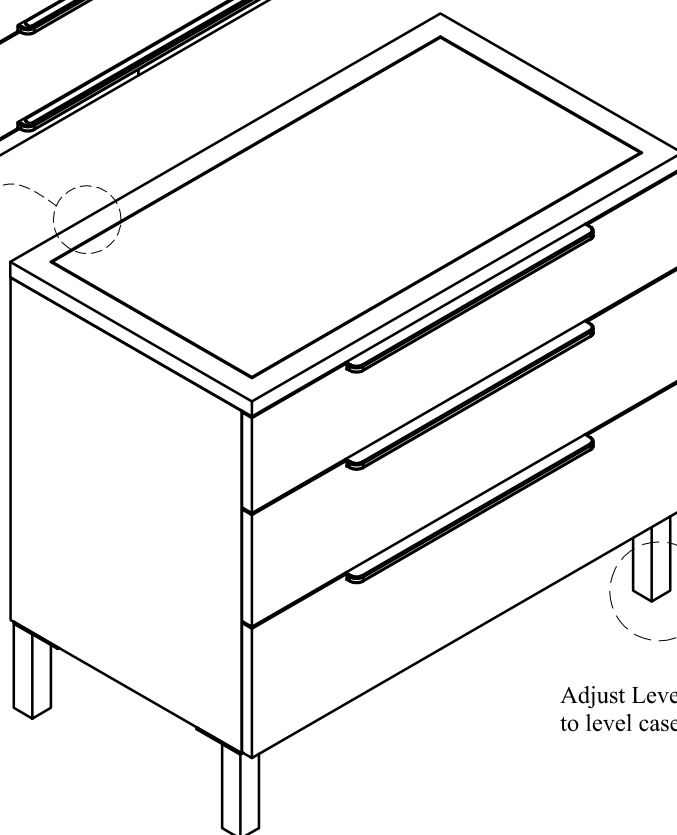
STEP 1. Lie down the case on a clean soft surface.

STEP 2. Put the metal leg on its position and fix using bolt (A), lock washer (B), flat washer (C), screw (E), tighten them by open wrench (D) and screwdriver. Refer to figure 1.

STEP 3. Repeat step 2 for other legs.



Anti-tip kit is included for use. We recommend installing for safety reason



Adjust Leveler if needed to level case on uneven floor.

Note: Anti-tip kit restraint instructions enclosed with the pack.