

CAMBRIDGE 55" CENTER SINK CABINET

ARIEL

A055S



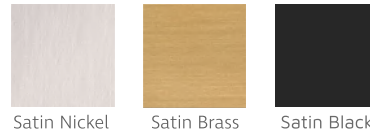
BASE CABINET DIMENSIONS

54" W x 21.5" D x 34.5" H

FEATURES

- Solid wood frame & plywood panels
- Dovetail drawers and joints
- Soft closing doors & drawers

HARDWARE FINISHES



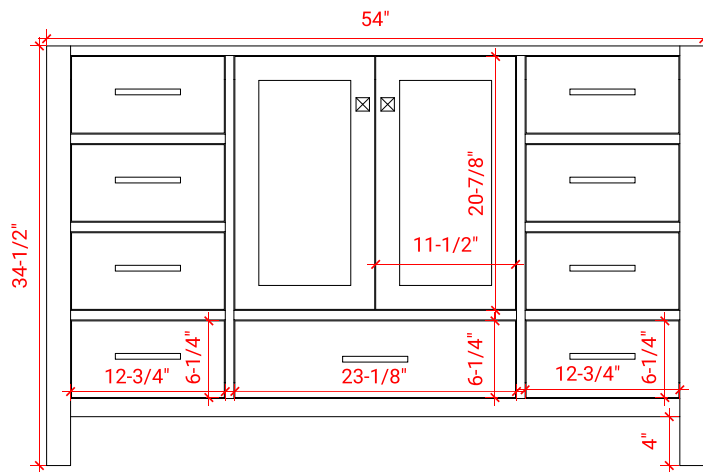
Satin Nickel Satin Brass Satin Black

AVAILABLE COLORS

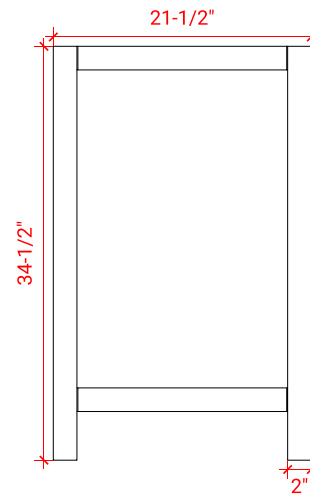


White Grey Espresso Midnight Blue

FRONT VIEW



SIDE VIEW



PLAN VIEW

