

JONATHAN ADLER

FURNITURE

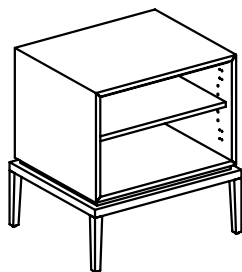
Channing Large End Table

Assembly Instruction

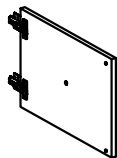
For easy assembly two people are recommended.

Parts Included:

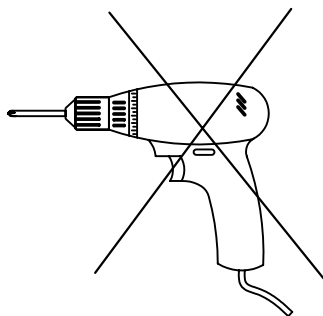
- Cabinet (A)-1pc



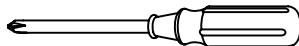
- Door (B)-1pc






- Knobs (C)-1pc



TOOLS NOT INCLUDED



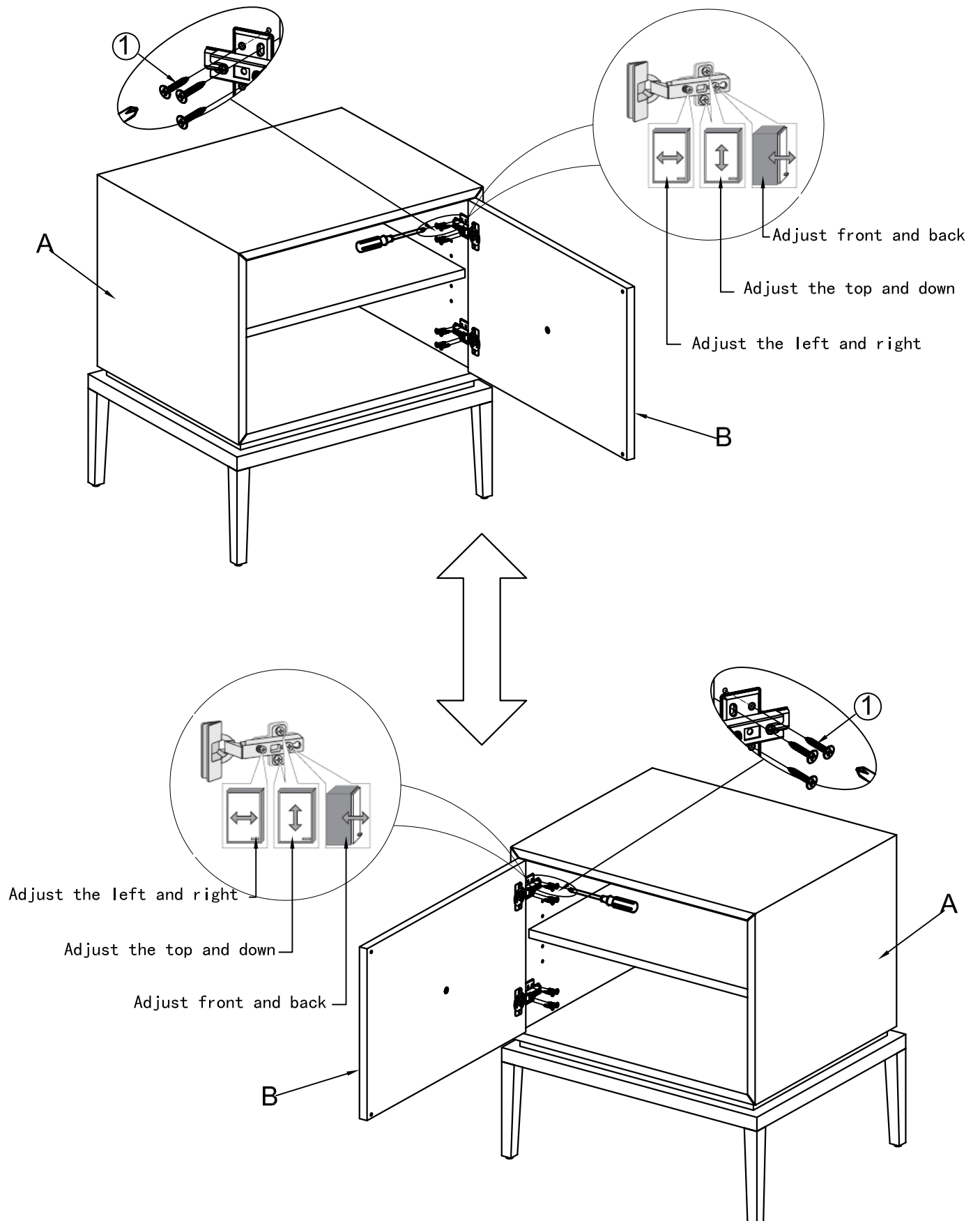
Hardware Included

①	 M4*14	8pcs
②	 M6*10	1pc
③	 4MM	1pc

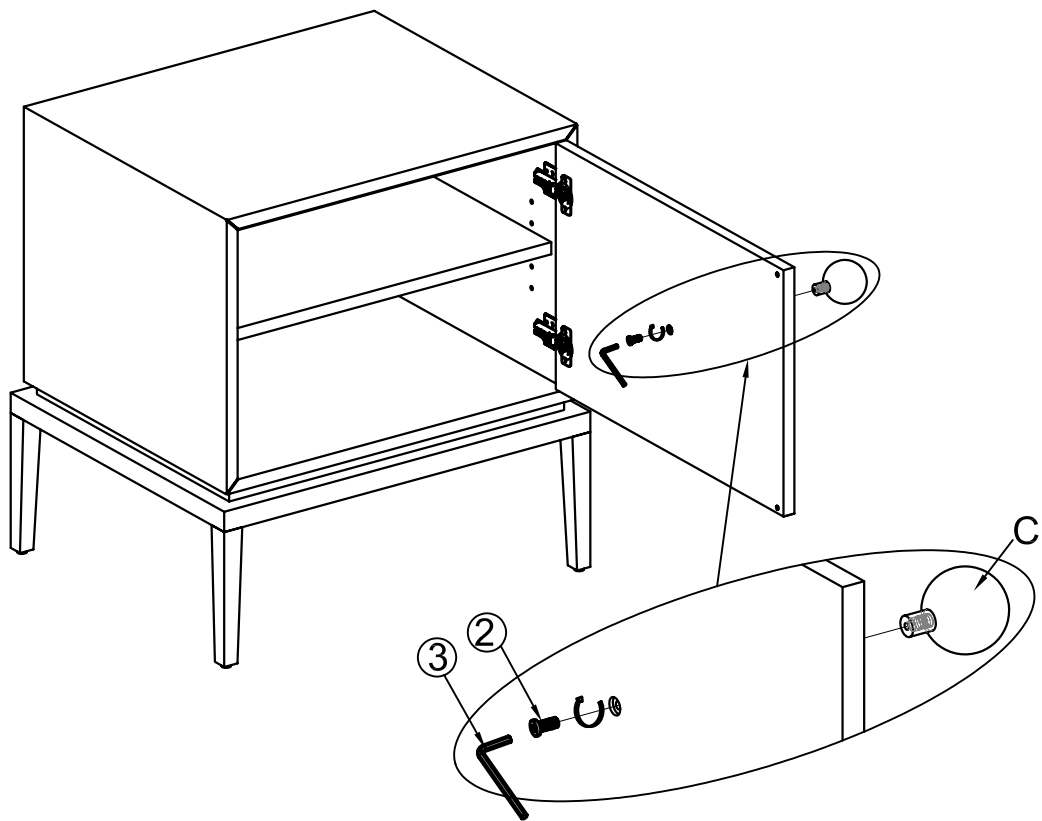
Assembly Instructions:

1. Assemble the door to the cabinet

Please Note: you can assemble the door on the left or right side;



2. Assemble the Knob.



3. Finished .

