

Owner's Manual
Item # GIL1644



Calm Infinity Fountain with LED Lights



**Have Questions or Issues? Need help with assembly?
Contact us and we will resolve them within 12 hours.**

Support Hours: M-F 7:30–5:00 (U.S. Pacific Time)



Call:
877-460-4511



Email:
info@alpine4u.com

CONTENTS

Contents	1
What's Included	2
Features	3
Assembling & Using Your Product	4
Replacement Parts	8
Troubleshooting	9
Caution	10
Warranty	11
Notes	12

WHAT'S INCLUDED



Fountain
(6 LED Lights Pre-installed)
1x



Back Door
1x



Pump
1x

FEATURES

- **Flowing water adds a soothing sound to any environment**



- **Made of lightweight, durable polyresin materials**

- **Modern, geometric design with stone-like texture**

SPECIFICATIONS

Power Requirements..... Standard Household 120V
Water Capacity.....3.5 US Gallons / 13 Liters
Tubing Diameter..... 0.5in / 1.25 cm I.D.

ASSEMBLING & USING YOUR PRODUCT

Unpack all components carefully. Please check to ensure all parts have been removed from the packaging.

1. Place the Fountain on a smooth & level surface. Allow enough space to access the pump.



2. Remove the Pump from its packaging and set the water flow to its lowest setting to avoid splashing until the fountain is completely assembled.



Alpine Quick Tip #1

Turn adjuster left to increase the water flow. Turn to the right to decrease flow.

3. Pull out the tubing from the back opening of the Fountain, and attach it to the Pump. *NOTE: Tubing may be zip-tied to the LED cords. Cut zip-ties carefully to separate.*



4. Take the LED cord out of the back opening of the fountain and attach it to the connector on the pump. Twist the protective sheath to secure the connection. Place the Pump into the fountain at the bottom of the basin.



5. Gently pour water into the fountain basin, being careful not to overflow and cause splashing. Make sure the water completely submerges the pump and the water runs clear during operation.

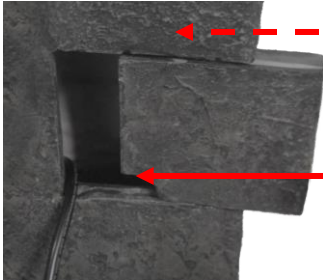
NOTE: We recommend that you use distilled water to prevent scale build-up. The first time you operate the pump it can take up to 5 minutes for the air to be completely expelled and water begins to flow properly



6. Plug the pump power cord into your local power supply. Make sure that there is no water around the plug & always keep the power source in a dry place.

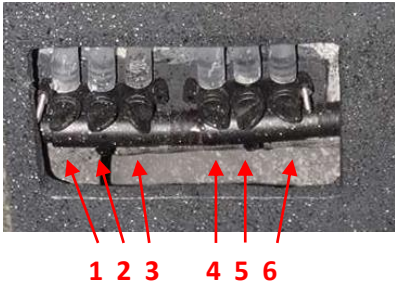


7. You can now adjust the water pump to your flow preference. (see Quick Tip #1) Once set, install the Back Door Cover by sliding it into the designated opening.

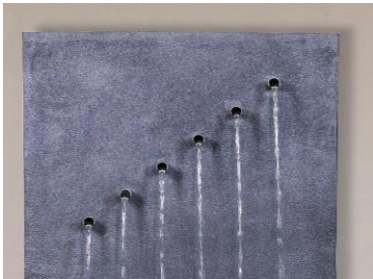


Alpine Quick Tip #2
Make sure the power cord is tucked neatly into the cord slot.

8. If splashing occurs, you may need to adjust the flow of each individual water valve. Turn a valve left or right to increase or decrease the water flow for a specific spout. See below for which valve corresponds to which spout.

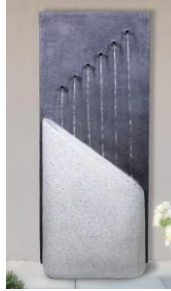


Alpine Quick Tip #3
Adjusting one valve may affect the flow rate of the valves downstream. Balance the flow by also making adjustments to the main flow rate on the pump



6 5 4 3 2 1

9. Congratulations, your fountain is now complete. Don't forget to add water regularly as water will evaporate over time.



REPLACEMENT PART **ITEM#**

- Replacement Pump PAD900

ALSO AVAILABLE FROM ALPINE

- Fountain Care Formula PPL100
Foam and scale remover for indoor and outdoor fountains.
- Americana® UV Acrylic Sealer RRR106
Provides protective clear coating for all painted surfaces.
- Touch Up Paint Kit RTD102
Includes primer, thinner, 7 paint colors, applicator and sealer.

TROUBLESHOOTING

If you have any questions and/or problems, please contact the retail store you purchased this fountain.

- **If your pump fails to run**
 - Check the circuit breaker or try a different outlet to make sure the pump is receiving electrical power.
 - Check the pump discharge and tubing for any kinks and/or obstructions
 - Any buildup obstructing the water flow can be flushed with a garden hose
 - Check the rotor by removing the front cover & plate to access the impeller area. Turn the rotor and make sure that the rotor is not jammed or broken
- **If your pump “spews”**
 - Check the water level to make sure the pump is completely submerged and there is enough water in the basin to operate your fountain. Not having enough water will cause your pump to spew
- **If your pump is making abnormal loud noises**
 - Disconnect the pump from the electrical power supply and remove the front cover & plate
 - Carefully grip the impeller and gently pull the impeller/rotor assembly out of the pump housing
 - Rinse the impeller/rotor assembly and clean the cavity with clean water. If breakage or damage is found, contact your local retailer for parts.

CAUTION



- **Always unplug the pump from the electrical outlet before cleaning & handling**
- **Use with clean water only, do not place the fountain and/or parts in any other liquid.**
- **Periodically change water & clean the pump to keep free from microorganisms**
- **Disconnect and store the unit in a dry place if not in use for an extended period of time, or during freezing weather.**
- **Do not operate the fountain in temperatures below 41° F / 5° C.**
- **Do not operate with water above 90°F / 30°C.**
- **Do not lift, carry or pull the pump by the power cord.**
- **Do not exceed the maximum voltage & wattage on transformer.**
- **NEVER LET THE PUMP RUN DRY.**

LIMITED WARRANTY INFORMATION

Thank you for choosing an Alpine product! We aim to please with our wide range of products including Fountains, Birdbaths, Statuary, Pond Supplies & More. All of our products are constructed from the highest quality materials. In the event that we have not achieved our usual standard of excellence, we will repair or replace, at our discretion, within the warranty period. A valid proof of purchase, with the purchase date clearly indicated, must be provided. Photos of defective merchandise will also be required to help distinguish the actual cause of the defect. Please read below for a detailed description of warranty coverage.

- **Water Damage**

Alpine products are not manufactured to withstand extreme temperatures. Improper storage that allows water to freeze within a product may cause damage, is considered negligence, and will not be covered under this warranty. The use of "hard water," and/or caustic cleaners, can affect the painted or other finishes. Failure to keep the unit clean, and use of such additives/cleaners, will also void the warranty. Please note: for fountains, it is normal for some splashing to occur and protecting the immediate surfaces is not the responsibility of Alpine Corporation.

- **Paint & Color (Retention and/or Loss)**

The use of water will cause natural erosion to the color. This area can be touched up using standard paint. The paint is designed to protect the entire finish against breakdown of color. As with any product, all finishes with time will gradually fade and discolor. The warranty will only cover against severe or complete fading, within the first year from date of purchase, with the above exclusion.

- **Procedure/Service**

Should a warranty/claim be needed, you should contact the retailer from whom you purchased the product. If that is not an option, you can contact Alpine Corporation at www.alpine4u.com. When contacting Alpine Corporation, you must be prepared to show proof of purchase, provide photographs and any other information needed to validate your claim. This may be necessary to distinguish between a partial or complete replacement of a defective product. The warranty does not cover any items with multiple parts; the warranty will ONLY cover the individual component of the unit/item that may be defective. Replacement parts can be made available to a consumer through the original selling party, or an approved parts retailer. If this is not an option, contact our customer service department. **Item is covered under one year limited warranty from the date of purchase. When requesting replacement parts due to a warranty claim after 30 days of purchase, credit card information will be requested for shipping charges.**

- **Not Covered Under Warranty**

The limited warranty will NOT cover cases of damages due to:

1. Damages caused in Transit
2. Inadequate care and/or neglect
3. Environmental and/or natural elements
4. Immersion in water, unless specified
5. Improper Installation/Storage and/or Maintenance

This warranty is void if the product has been damaged by accident, misuse, negligence, improper installation and/or modifications have occurred. This includes any and/or all defects arising out of freezing water damage, hard water damage, failure to keep the unit clean and free of harmful additives such as bleach, chlorine, etc.... which affects the paint and/or parts. This warranty also does not cover any additional charges or installation, removal, disposal and/or shipping costs or consequential damage associated with any warranty claim.

NOTES

Purchased your product online?

We would really appreciate it if you can share your experience with others by reviewing our product on the website from which you purchased.

