



## **Coda 8" Widespread Basin Faucet**

**FUS-13803**

## **Congratulations on the purchase of your new Kraus plumbing fixture!**

Please keep the box and packaging materials until your product is completely installed. If you have any questions, require technical assistance, or have any problems with your product:



**DO NOT RETURN TO STORE**

**Please contact our Customer Service Team**

**1-800-775-0703 / [customerservice@kraususa.com](mailto:customerservice@kraususa.com)**

Have the model number available, and retain a copy of your receipt with purchase date for reference.

If for any reason this product does not meet your expectations, please be sure to repack this product in the original box and packaging material to avoid damage during transit.

## Prior to Installation:

- Make sure you have all necessary parts by checking the diagram and parts list. If any part is missing or damaged, please contact Kraus Customer Service at 800-775-0703 for a replacement
- Turn off the hot and cold water supply at the angle stops and turn on the old faucet to release any built up pressure. Remove existing faucet. Clean sink or countertop to remove any debris, plumber's putty, or silicone
- Place bucket under angle stops. Turn on to flush any debris prior to installing new plumbing. Shut off angle stops
- Max countertop thickness: 1-3/8"

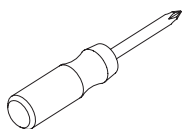
**For technical assistance or replacement parts, please contact Kraus Customer Service and one of our representatives will be happy to help:**

Toll-Free: 800-775-0703 or [Customerservice@kraususa.com](mailto:Customerservice@kraususa.com)

## Tools you will need:



**Adjustable Wrench**



**Phillips Screwdriver**

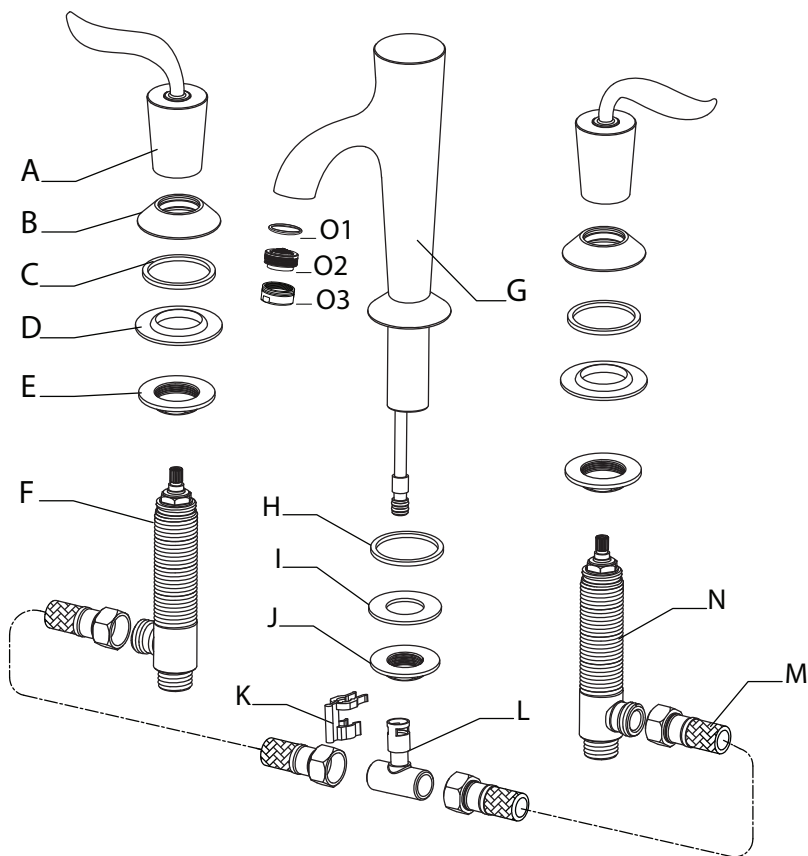


**Safety Goggles**



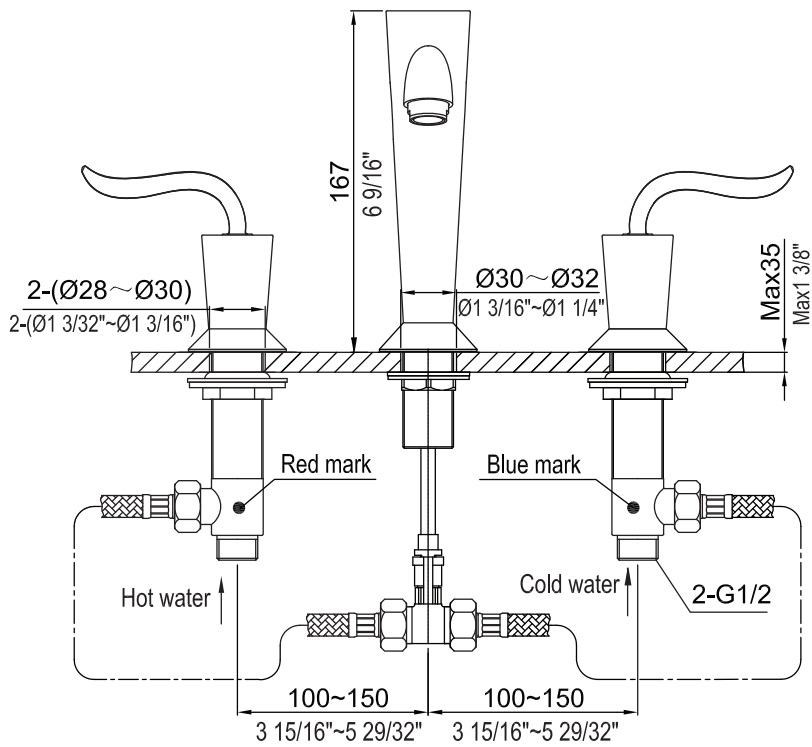
**Bucket**

FUS-13803 Diagram and Parts List

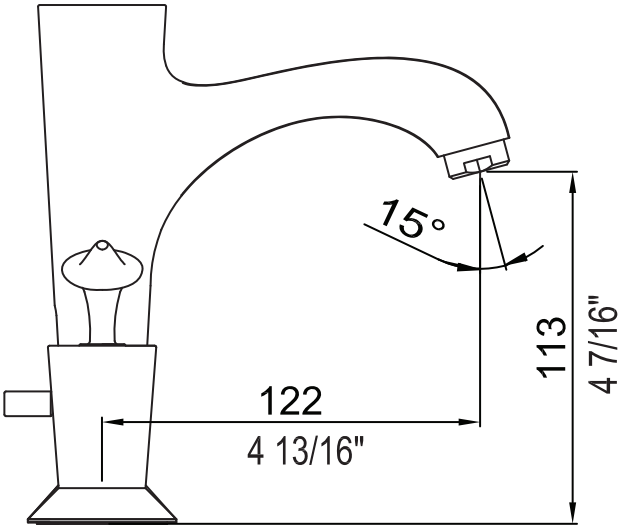


- A. Hot & Cold Handle
- B. Base Metal Ring
- C. Base O-Ring  
(factory-installed in base metal ring)
- D. Rubber Washer
- E. Mounting Nut
- F. Hot Valve
- G. Spout
- H. Base O-Ring  
(factory-installed in base of spout)
- I. Rubber Washer
- J. Mounting Nut
- K. T-Union Clip
- L. T-Union
- M. Waterlines
- N. Cold Valve
- O. Aerator Assembly
  - O1. Aerator Washer
  - O2. Aerator
  - O3. Aerator Cover

Faucet Dimensions

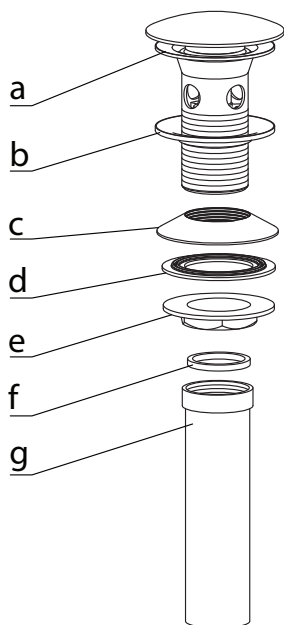


Faucet Dimensions

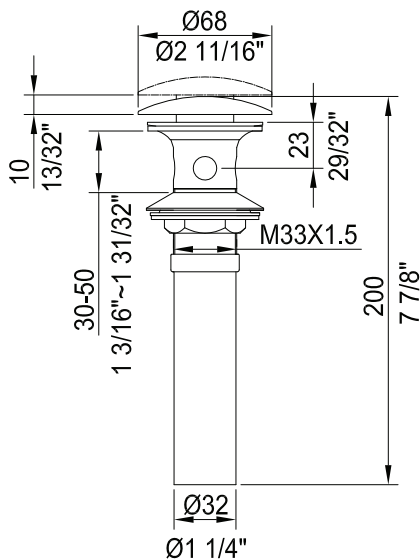


## Lift Rod Drain

### Diagram and Parts List



### Dimensions



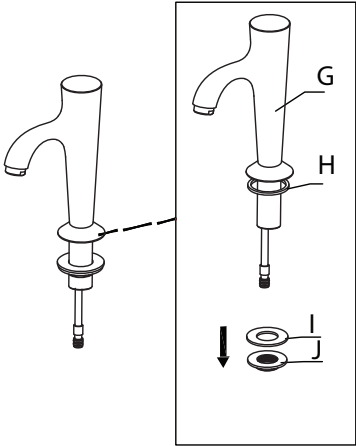
- a. Drain Body
- b. Rubber Washer
- c. Concave Washer
- d. Plastic Washer

- e. Mounting Nut
- f. Tailpipe Washer
- g. Tailpipe



### Step1: Remove mounting hardware from spout

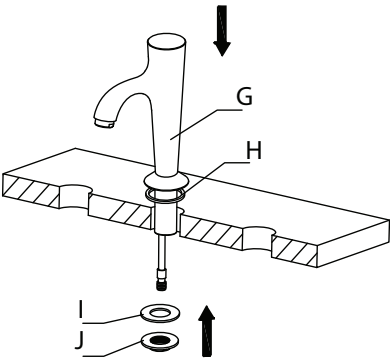
---



Remove mounting nut (J), rubber washer (I), and base O-ring (H) from spout (G)

### Step 2: Secure Spout

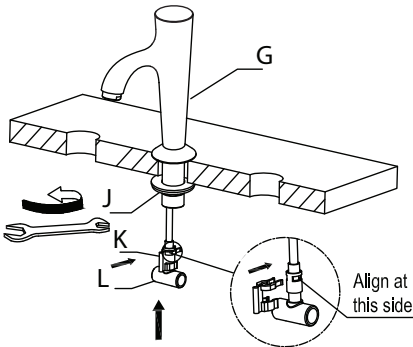
---



Install spout (G) through hole in sink or countertop with base O-ring (H) attached. Attach rubber washer (I) and mounting nut (J)

### Step 3: Install spout

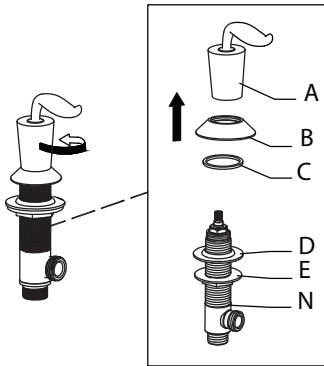
---



Adjust spout (G) to proper position and tighten mounting nut (J) with adjustable wrench. Install t-union (L) onto supply line of spout (G). Attach t-union clip (K) to secure t-union (L)

## Step 4: Remove hot & cold handles and base metal rings

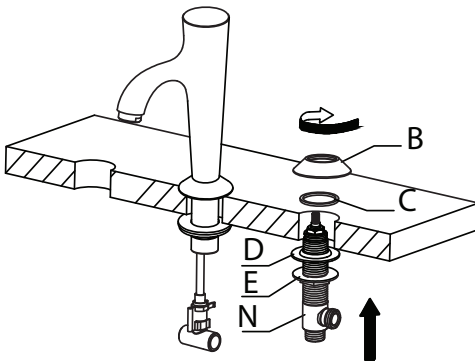
---



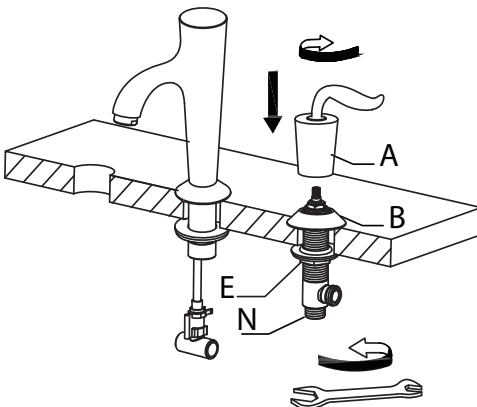
Remove handle (A) and base metal ring (B) from valve (N). Insert valve (N) into predrilled hole (Hot: Left, Cold: Right) from underneath. Repeat steps for second handle (A) and valve (F)

## Step 5: Secure valves

---

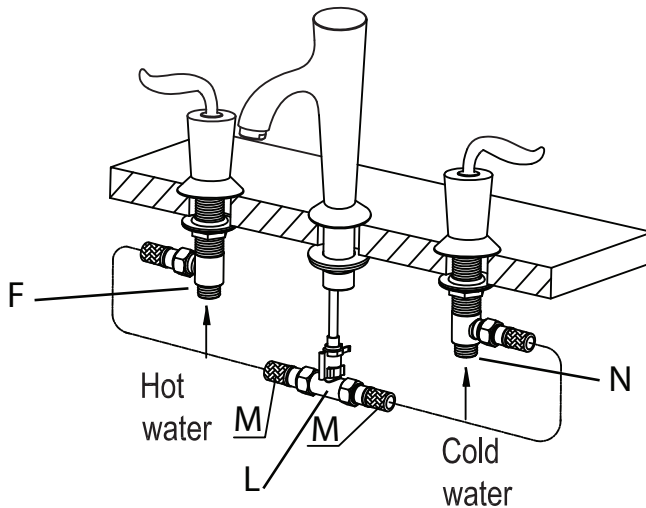


Secure base metal ring (B) and handle (A) onto valve (N) from above. Tighten mounting nut (E) on valve (N) from underneath with adjustable wrench until snug. Repeat steps for second handle (A) and valve (F)



## Step 6: Connect waterlines to faucet and main valve

---



Thread waterlines (M) to hot and cold valve (F & N) horizontally. Thread other end of waterlines to t-union (L). Attach hot & cold supply lines (not included with faucet) to valves (F & N) vertically

A. Hot Side: Left

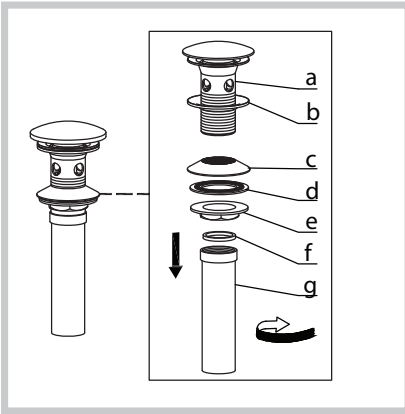
B. Cold Side: Right

Secure other end of hot & cold supply lines to angle stops. Tighten all ends with adjustable wrench until snug. Turn on angle stops and check for leaks (DO NOT TURN ON FAUCET)

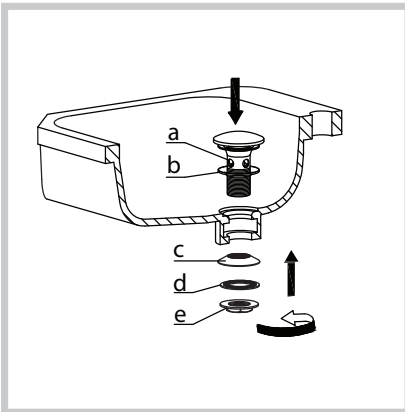
### Please Note:

1. The faucet comes with waterlines (M). Supply lines are required to attach to the angle stops (not included)
2. Recommended supply lines: 3/8 in. OD x 1/2 in. IPS

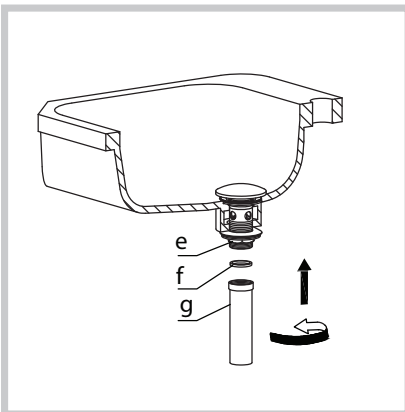
## Step7: Install drain



- Remove tail pipe (g), mounting nut (e), plastic washer (d), and concave washer (c) from drain body (a)



- Install drain body (a), with rubber washer (b) attached, into the drain hole. From underneath, attach concave washer (c) (narrow end up), plastic washer (d), and mounting nut (e) to drain body (a). Secure tightly to sink with an adjustable wrench

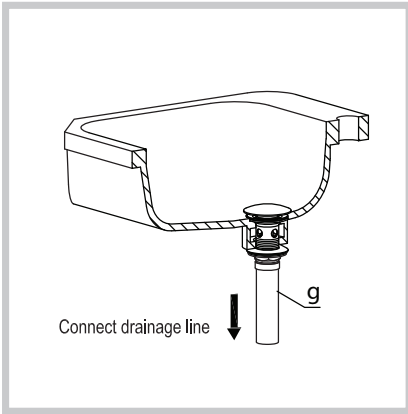


- Tighten mounting nut (e) with adjustable wrench until snug. Thread tailpipe (g) onto drain body (a) and hand-tighten

**Installer Tip:** Make sure tailpipe washer (f) is installed in tailpipe

## Step7: Install drain

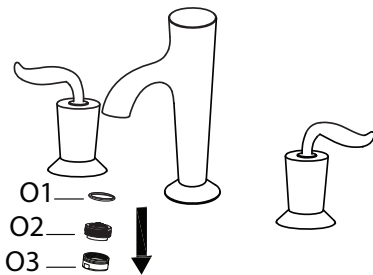
---



- Connect tailpipe (g) to p-trap

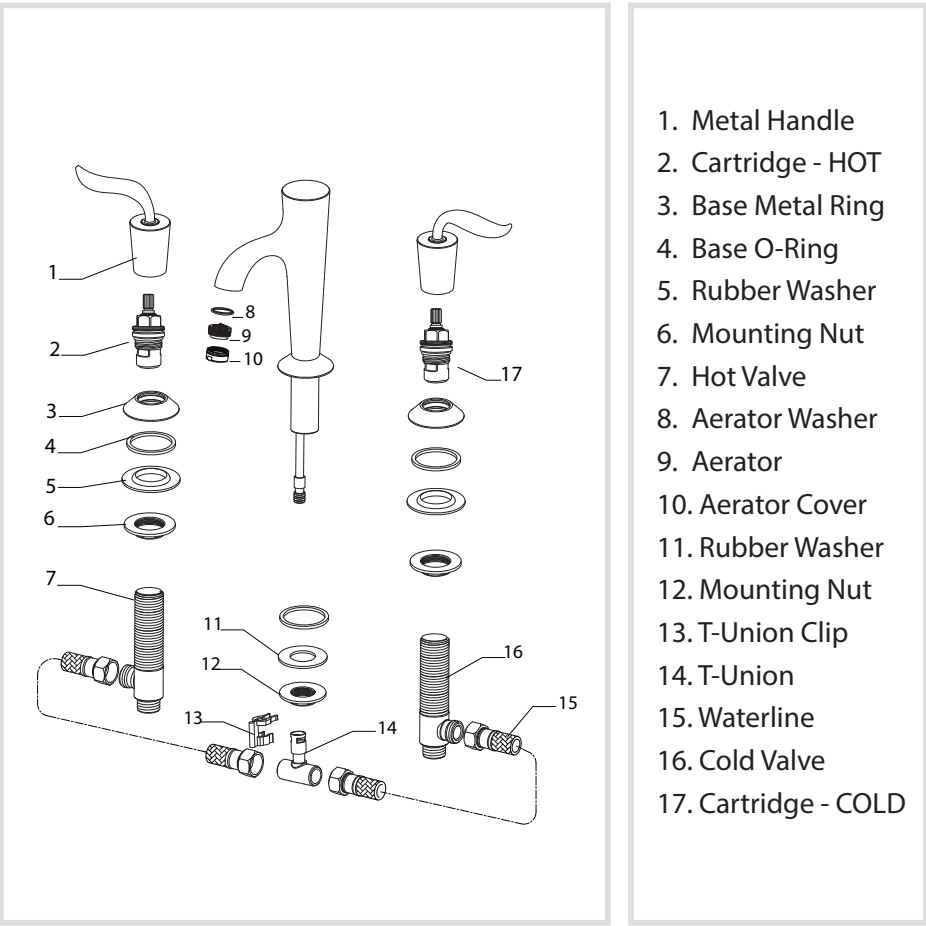
## Step 8: Flush faucet

---



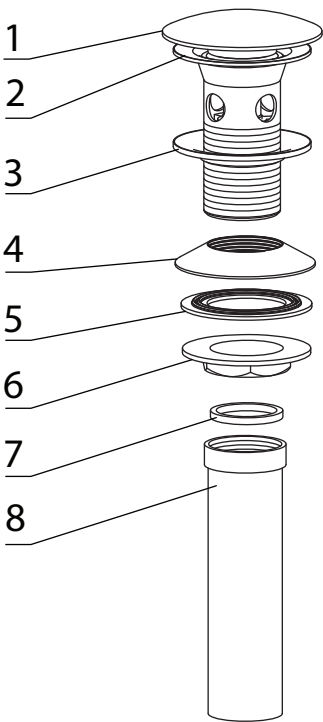
Remove aerator assembly (O). Loosen aerator cover (O3) with adjustable wrench. Remove aerator (O2) and aerator washer (O1). Turn water on for 1 minute to remove any debris. Reassemble aerator assembly (O)

# Replacement Part List - FUS-13803



# Replacement Part List - Lift Rod Drain

---



- 1. Drain Cap
- 2. Drain Body
- 3. Rubber Washer
- 4. Concave Washer
- 5. Plastic Washer
- 6. Mounting Nut
- 7. Tailpipe Washer
- 8. Tailpipe

# Trouble - Shooting

If you have followed the instructions carefully and your faucet still does not work properly, take the following corrective steps:

PROBLEM	CAUSE	ACTION
Leakage under handles	Hot or cold cartridge (2 or 17) may be loose	Remove H & C metal handle (1). Tighten hot or cold cartridge (2 or 17) with adjustable wrench
Aerator drips or has inconsistent water flow pattern	Aerator (9) may be dirty or not seated properly	Unscrew aerator cover (10) with adjustable wrench. Remove aerator (9), and clean out debris
Water will not shut off completely	Hot or cold cartridge (2 or 17) may need to be adjusted or replaced	Remove H & C metal handle (1). Remove hot or cold cartridge (2 or 17) with adjustable wrench. Check for cracks
Drain is leaking	Washers may be compromised or installed incorrectly	Check washers to make sure they are installed correctly and not cracked

# Care & Maintenance

\*To keep the product clean & shining, follow the steps below:

1. Rinse with clean water & dry with a soft cloth
2. Do not clean with soaps, acid, polish, abrasives, or harsh cleaners
3. Do not use cloth with a coarse surface
4. Unscrew the aerator and clean when necessary



\*This installation manual is subject to change without further notice.



## Codes/Standards Applicable:



NSF/ANSI 61



ASME A112.18.1M  
1.2GPM 4.5L/min maximum

### FAUCET WARRANTY

Kraus products are manufactured and tested to the highest quality standards by Kraus USA Inc. ("Kraus"). Kraus extends this warranty to the original purchaser for personal household use of the **"Faucet"** in its original location. The warranty is non-transferable.

Kraus warrants the structure and finish of the product to be free from defects in material and workmanship under normal usage for the lifetime of the product. The warranty commences from the initial date of purchase by the owner or trade professional, from an authorized Kraus dealer, through the lifetime of the original owner or end-user.

Kraus warrants the mechanical components (such as **sprayhead assembly**) of the product to be free from defects in material and workmanship under normal usage for a period of one (1) year. The warranty commences from the initial date of purchase by the owner or trade professional, from an authorized Kraus dealer, through the one (1) year term of the original owner or end-user.

Kraus warrants the mechanical component (**cartridge**) of the product to be free from defects in material and workmanship under normal usage for a period of five (5) years. The warranty commences from the initial date of purchase by the owner or trade professional, from an authorized Kraus dealer, through the five (5) year term of the original owner or end-user.

Any product reported to the authorized dealer or to Kraus as being defective within the warranty period will be repaired or replaced with a product of equal value at the option of Kraus. This warranty extends to the original owner or end-user, and is not transferable to a subsequent owner.

### RESTRICTIONS

This warranty does not cover antediluvian, discontinued, or display products, whether such items are purchased at discount outlets, unauthorized dealers, and/or sold on clearance.

This warranty does not cover instances of negligence, misuse, abuse, improper installation, carelessness, accident, hard water or mineral deposits, exposure to corrosive materials, misapplication, damages caused by improper maintenance, alteration of the product, or failure to follow care or installation instructions enclosed with your product. Avoid using abrasive cleaners such as powders, bleach, ammonia, alcohol, or chlorine. Avoid using abrasive pads, steel wool, or wire brushes, as these will damage and wear down the finish.

This warranty does not apply to Products that have not been installed or operated in accordance with instructions supplied by Kraus and all applicable rules, regulations, and legislation pertaining to such installations.

This warranty does not apply unless the Kraus product is installed by a fully insured and licensed trade professional. Kraus insists that such professionals have experience in the installation of bathroom and kitchen manufactured goods.

This warranty does not cover labor charges or costs of removal and reinstallation of said product. This warranty does not allow recovery of incidental or consequential damages, such as loss of use, delay, property damage, or other consequential damages, and Kraus accepts no liability for such damages.

This warranty does not cover Marine or Outdoor Installation.

Except as otherwise provided above, Kraus makes no warranties, expressed or implied, including warranties of

merchantability and fitness for a particular purpose, or compliance with any code.

Shipping charges will be covered for the first (1) year of the warranted replacement part or product (HI, AK, and Puerto Rico shipping charges may apply). International shipping fees are not included.

### **COMMERCIAL WARRANTY**

Kraus extends the above warranty for a period of one (1) year to purchasers of products for industrial, commercial, and business use.

All incidental or consequential damages are specifically excluded. No additional warranties, express or implied, are given, including but not limited to any implied warranty of merchantability or fitness for a particular purpose.

Some states do not allow the exclusion or limitation of incidental or consequential damages or limitations on how long an implied warranty lasts, so the above limitations or exclusions may not apply to you.

This warranty gives you specific legal rights, and you may also have other rights which vary from state to state.

### **If you are a homeowner please contact a Kraus Customer Service Representative at:**

Kraus USA, Inc.  
12 Harbor Park Drive  
Port Washington, NY 11050  
Toll-free 800-775-0703  
Customerservice@kraususa.com

### **If you are a plumbing contractor or trade professional please contact a Kraus Pro Representative at:**

Kraus USA, Inc.  
12 Harbor Park Drive  
Port Washington, NY 11050  
516-801-8955  
Proservice@kraususa.com

### **If you are an Authorized Partner please contact a Partner Support Representative at:**

Kraus USA, Inc.  
12 Harbor Park Drive  
Port Washington, NY 11050  
516-801-8954  
Partnersupport@kraususa.com

### **In requesting warranty service, please be ready to provide:**

1. Proof of purchase.
2. A description of the problem.

**Download the Kraus Care & Maintenance Guide at:**

<http://www.kraususa.com/maintenance>



# IMPORTANT

## Register Your Kraus Product

**Activate** Your Warranty

**Access** Premium Customer Support

**Get** Product Information

**REGISTER TODAY**

<http://www.kraususa.com/registration>



**Kräus**<sup>®</sup>  
www.kraususa.com