

Features

- Modern design.
- Ceramic sink with overflow.
- Sink features right counter space.
- Base with integrated side towel bar.
- Large drawer for ample storage.
- Push open and close drawer mechanism.

Material

- Matte black ceramic bathroom sink.
- Matte black metal console stand.
- Engineered wood drawer with metal constructed sides.

Installation

- Console installation.

Configurations

- Single hole.
- Three hole (special order).
- No hole (special order).




Ceramic Sink Certifications/Codes

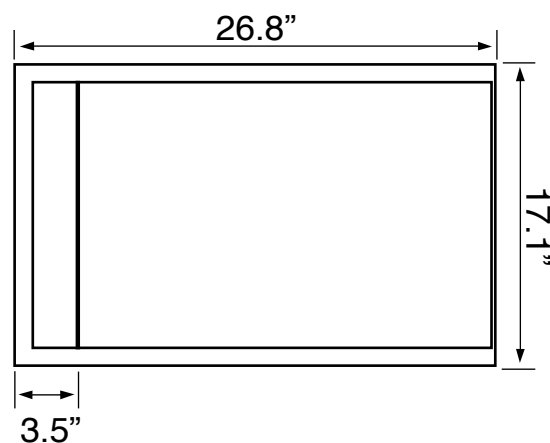
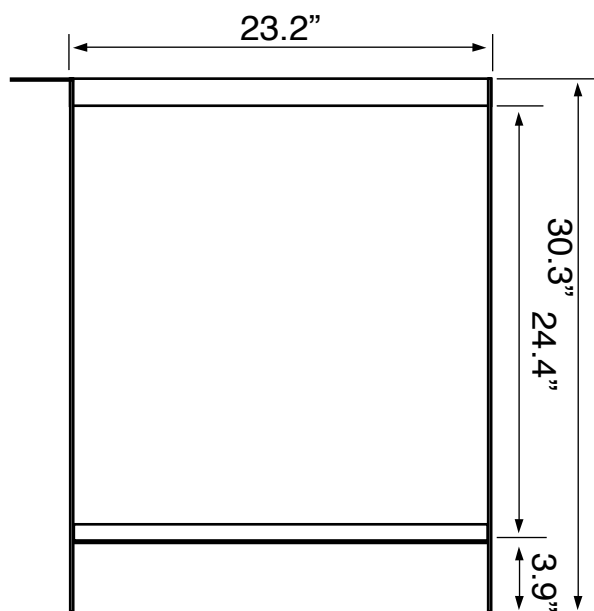
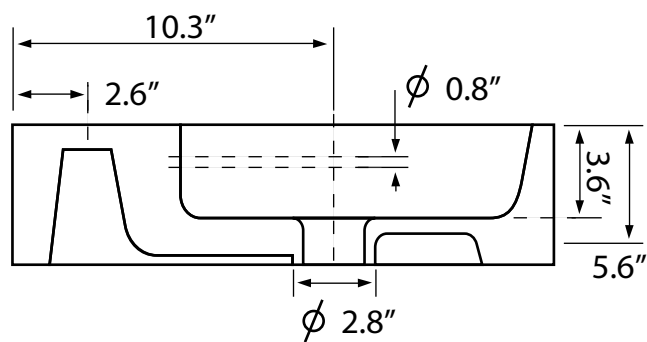
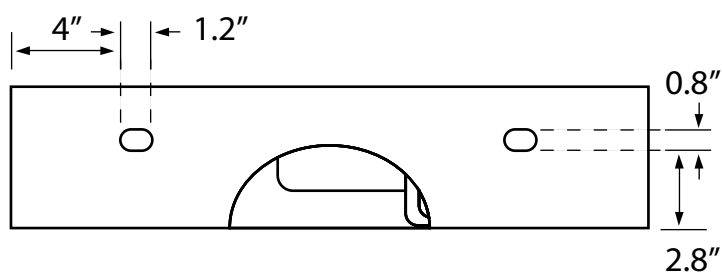
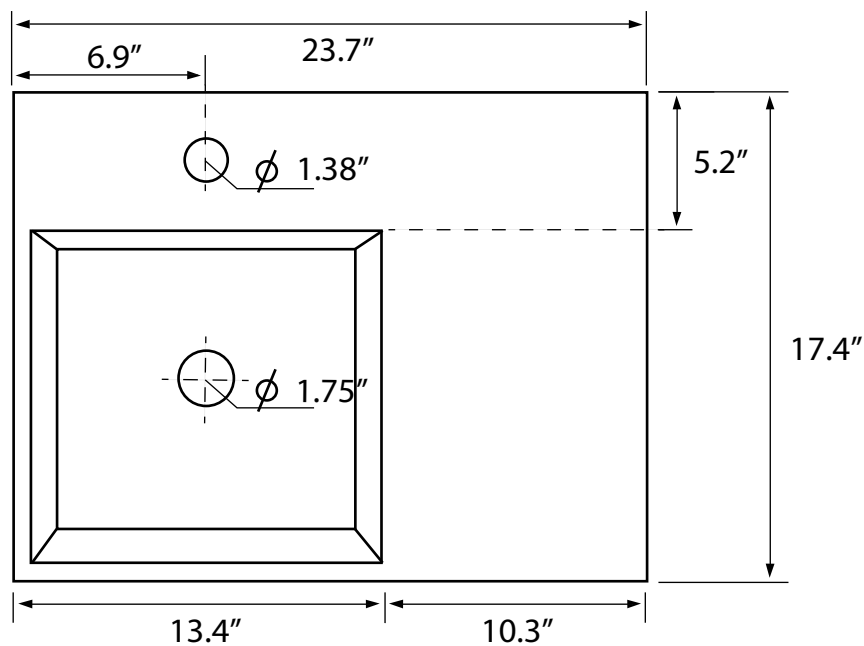
IAPMO Certified
US Standards Approved
Uniform Plumbing Code (UPC/cUPC)
National Plumbing Code of Canada
ASME A112.19.2018/CSA B45.1-18

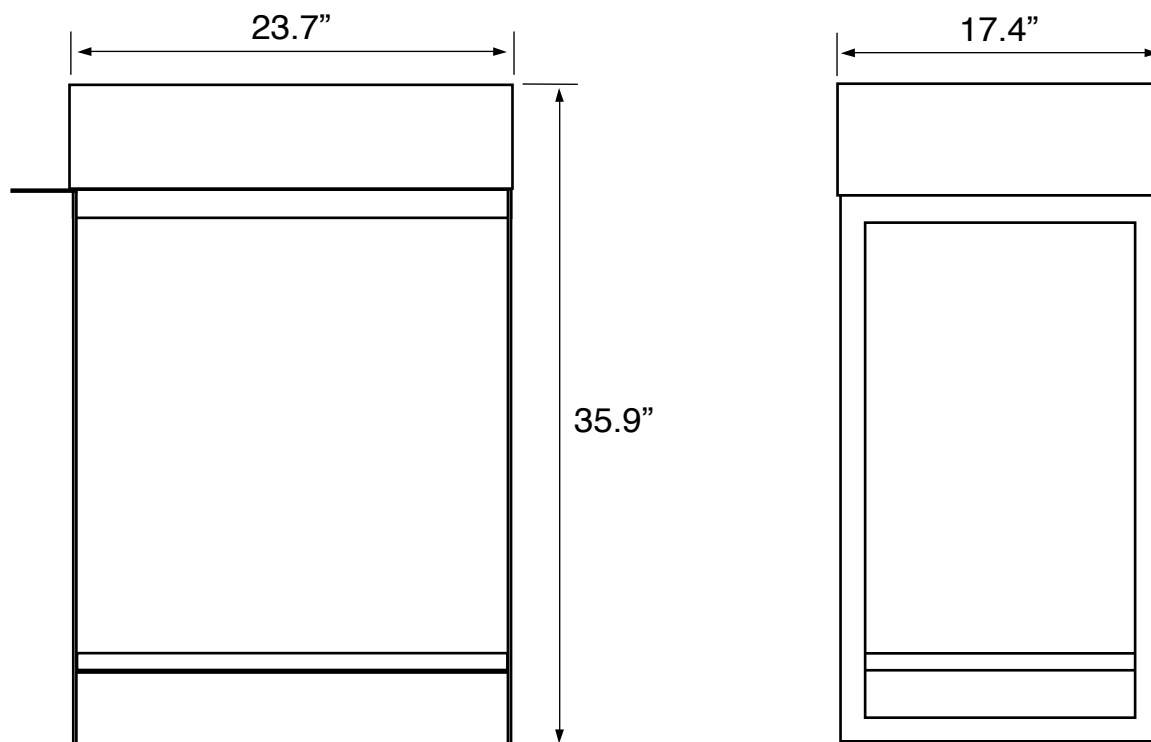
Nameek's One-Year Limited Warranty

See website for warranty information details.

Drawer Color/Finish Details

Color	Code	Description
	89	Natural Brown Oak





Technical Information

Bowl type:	Single
Installation:	Console
Bowl dimensions:	Depth: 3.54"
	Width: 12.2"
	Length: 13.39"
Drain hole:	1.75"
Faucet hole:	1.38"
Hole configurations:	0, 1, 3
Weight:	120 lbs

Notes

Install this product according to the installation instructions.

Includes mounting hardware.