



#2107 Shown

Traditional Cast Iron Bath

#2102 | 68"L x 30"W x 24"H

310 lbs, 59.5 Gallons

Cheviot Products' cast iron bathtubs are hand-made in Europe with the finest materials. Fired with a thick coating of AA grade titanium-based enamel for unparalleled hardness and non-porosity, the extremely durable surface is easy to clean and resistant to stains, bacteria and other microbes. Cast iron also keeps your bath warm for the longest possible time.

Rim Configuration

3 3/8" c.c. Holes in
Wall of Tub

Colours

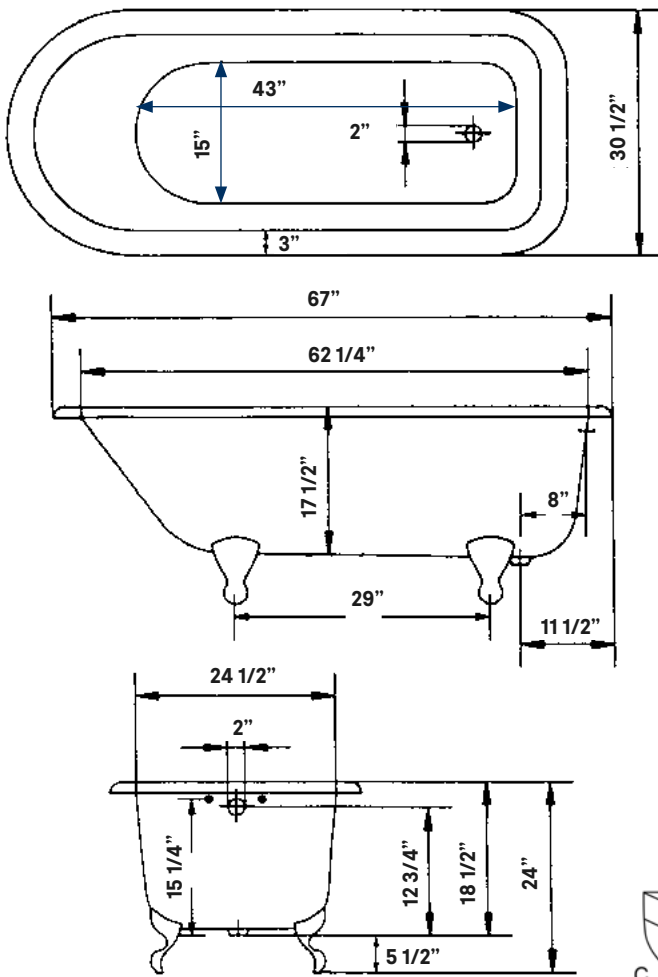
White Interior & Exterior
White Interior & Custom
Colour Exterior

Feet

Available in Brass, Chrome,
Brushed Nickel, Polished Nickel,
Antique Bronze and White

Note

Rough-in dimensions may vary +/-
1/2" and are subject to change.
No responsibility is assumed by
Cheviot Products Inc.
One Year Limited
Warranty against
manufacturer's defects.



Related Products



**#3107 Tub Filler with
Hand Shower**



#3100 Tub Filler



**#35576 Offset
Water Supply Lines**



**#2222 Waste &
Overflow**