

# Fontana Oil Rubbed Bronze Square Color Changing LED Rain Shower Head with Mixing Valve Controller (Solid Brass)



## Installation Instructions

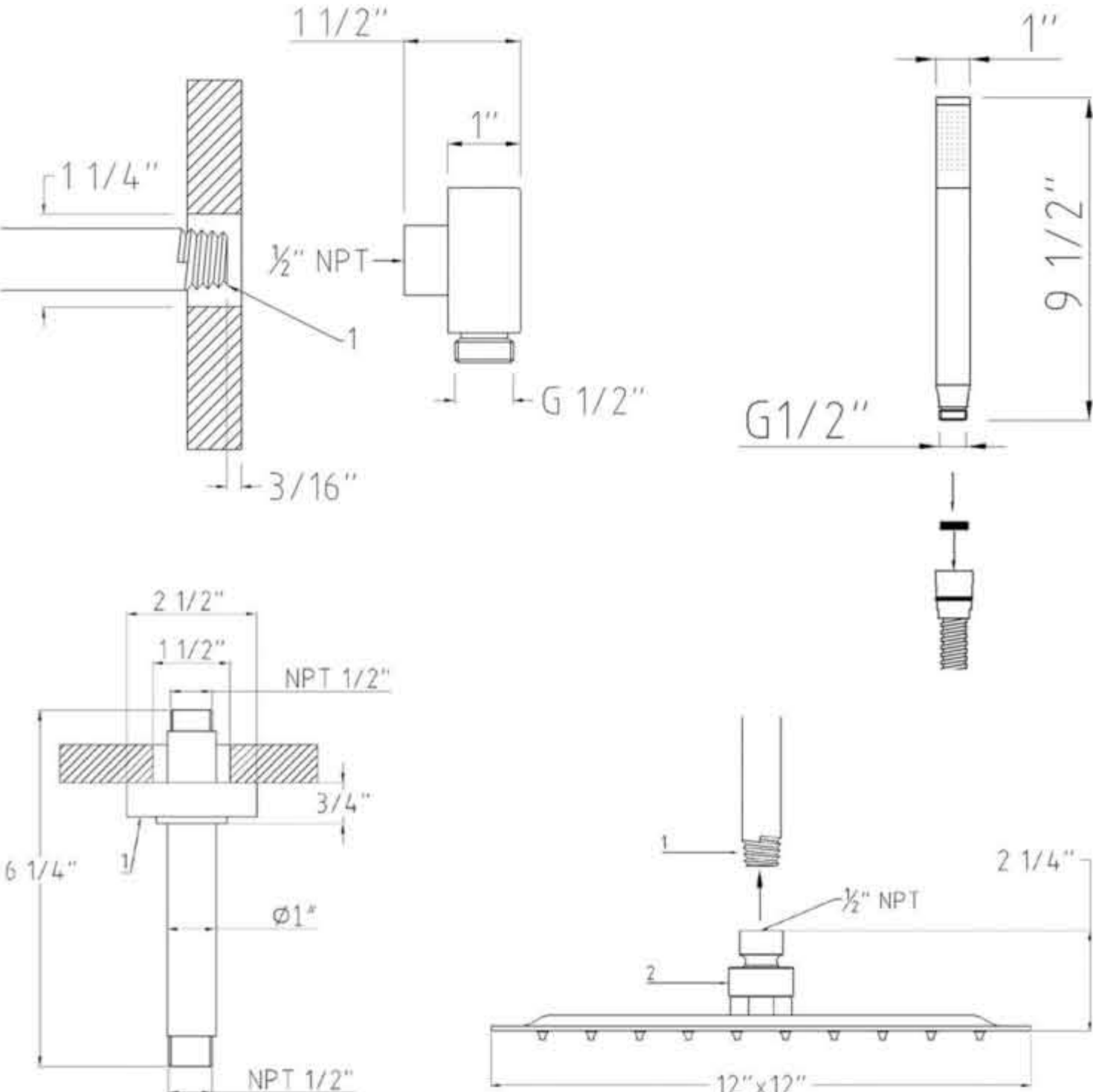
Before installing, read entire Widespread Faucet Installation Instructions. Observe all local building and safety codes.

For the following installation instructions for your new Widespread Faucet it is assumed that any old fixtures have been removed and any repairs or modifications to the water supply have been completed.

Unpack and inspect the product for any shipping damages. If you find damages. If you find damages, do not install. Contact Customer Service

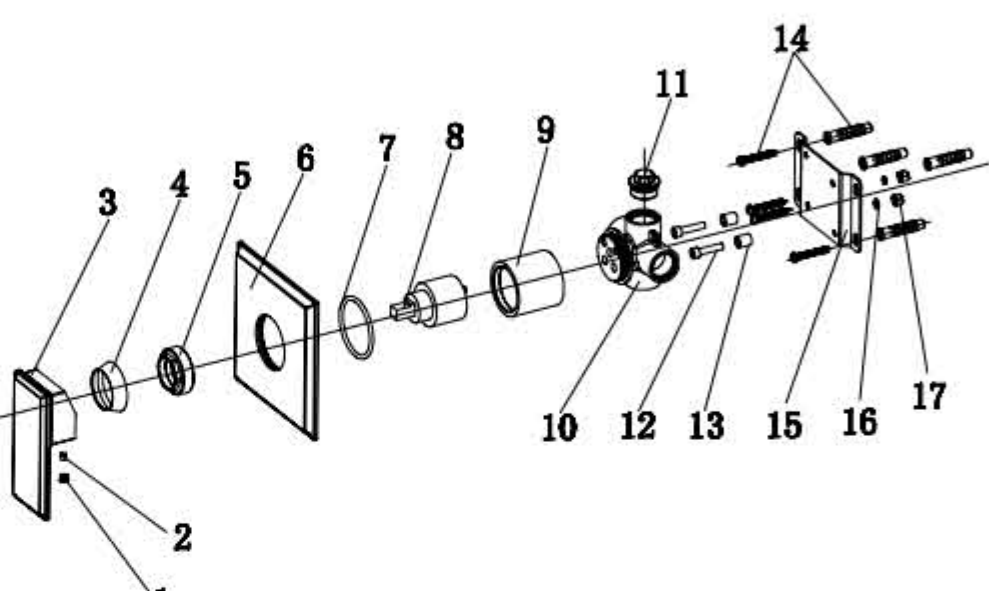
### TOOLS AND MATERIALS:

Adjustable Wrench  
Silicone Sealant  
Damp Cloth

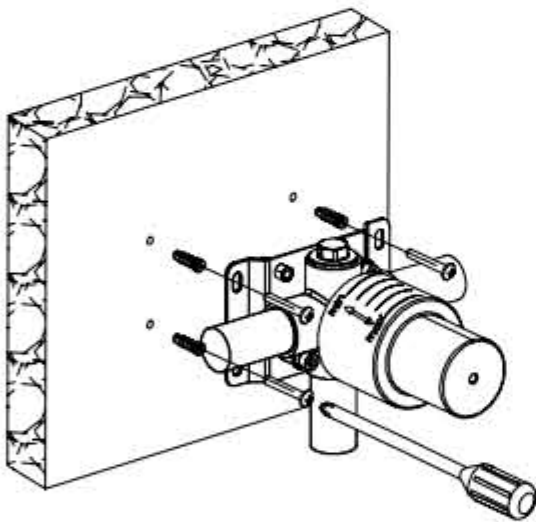


### VALVE EXPLODED VIEW:

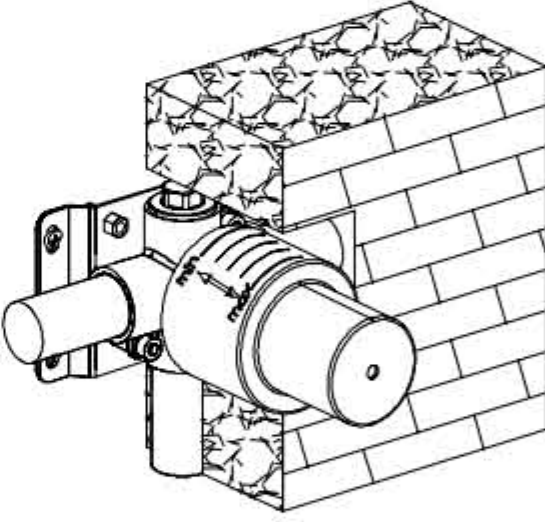
1	SD10101000200
2	M0105004
3	SD15617000100
4	SD10117000400
5	SD10117000500
6	SD15619000300
7	OXQ50030
8	FX0402
9	SD10117000600
10	SD10119000800-1
11	SD10119000700-1
12	M0305022
13	SD10119000900
14	M0805032
15	SD10119001000
16	SD10119001100
17	M110405



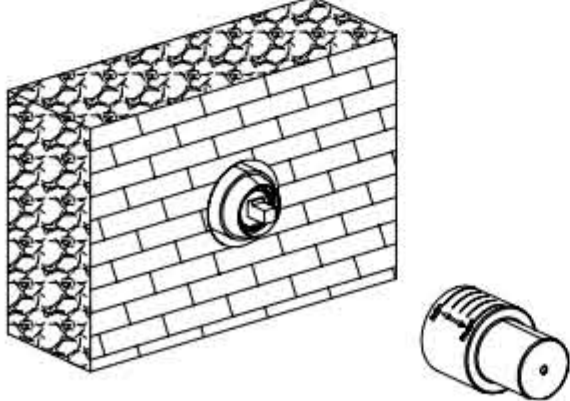
### INSTALLATION:



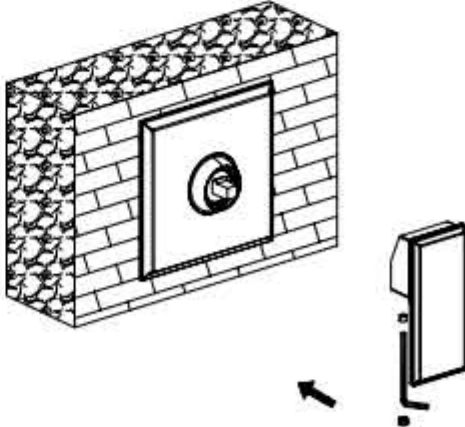
1. Install the valve body. Wrap the threaded portion of the joints in Teflon tape and connect the water inlet and outlet.



2. Put the protective cover on the valve body and finish the shower wall.



3. When the finished wall is complete, remove the protective cover.



4. Install the escutcheon, and handle. Tighten the set screw with an Allen wrench to secure.

5. Attach the shower arm escutcheon to the shower arm. Wrap the threaded portions of the shower arm with Teflon tape and connect the arm to the shower inlet. Adjust the direction of the water flow as needed. Attach the rainfall shower head to the shower arm.

This General diagram and installation instructions are not intended for any specific model, but is presented as a general guideline for Installations!