



LUCCA
K-138
KITCHEN FAUCET

BEFORE YOU BEGIN YOUR INSTALLATION



Shut off
water supply



Flush hot and cold
water supply lines



Required tools



Installation by License
Professional Plumber



Flush the water pipe
before installation



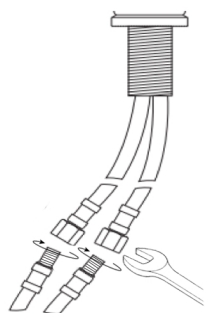
Drawings are for
reference only



Do not disassemble
the body

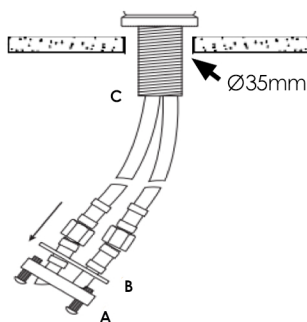
FAUCET INSTALLATION

1



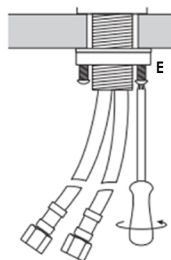
Connect the braided
supply hoses to the faucet,
tighten gently with a wrench.

2



Ensure there is a Ø35mm
through-hole on the kitchen
counter. Remove the mounting
nut (A) and washer (B) from the
threaded shroud (C).

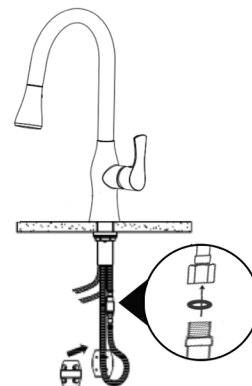
3



Position faucet on the installation
surface. Fit flexible hoses through
hole on countertop or sink.

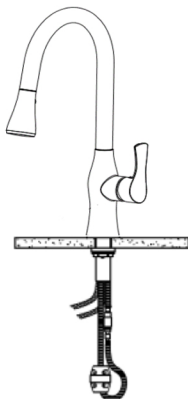
Slide washer and thread the
mounting nut onto threaded
shroud. Turn faucet to desired
handle position. Securely tighten
clamp screws (E)

4



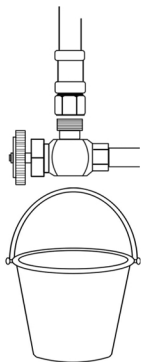
Connect pullout hose to quick
connect and insert weight (loose-
install)
Note: When connecting pull out
hose to faucet inlet pipe, ensure to
add black rubber gasket
provided.

5



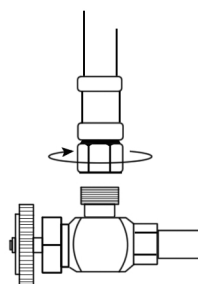
Secure weight on lowest vertical
point on pull-out hose side.
(not on quick connect side)

6



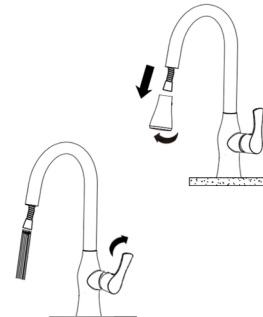
Before connecting supply hose,
flush supply valves to clear any
debris. Place a bucket underneath
valves and run water for 5 to 10
seconds. Turn water off.

7



Connect hot and cold water lines
to the inlet pipe and tighten with
a wrench until snug.
Do not over tight.

8



Unscrew spray head by hand. Hold
the tip of the spray hose down
and turn on the faucet and let the
water run 60 seconds to flush
any debris, the re-connect spray
head.
Ensure gasket is present.

CARE AND CLEANING

Clean the faucet frequently using mild soap or an on-abrasive cleaner and then quickly rinse with water and dry with soft cloth only.

Using abrasive cleaners, solvents, acid cleaners or any scrubbing detergent, polisher or scraper will damage the finish and void the warranty.

WARRANTY

For additional technical assistance or for any questions or concerns about your faucet's warranty, please contact us.

www.stylishkb.com/warranty



www.stylishkb.com



care@stylishkb.com



+1-855-789-5352

Stylish International Inc Follow us on Instagram! Check out and let us know your comments [stylish.international.inc](https://www.instagram.com/stylish.international.inc)

Products and specifications shown are subject to change without notice. Please contact our technical support at care@stylishkb.com for any further queries, replacement parts requests, etc. ©2019 Stylish® all right reserved.