



LODI

K-142

DRINKING WATER TAP

BEFORE YOU BEGIN YOUR INSTALLATION



Shut off
water supply



Flush hot and cold
water supply lines



Required tools



Installation by License
Professional Plumber



Flush the water pipe
before installation



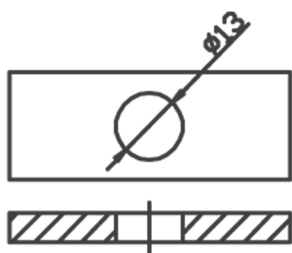
Drawings are for
reference only



Do not disassemble
the body

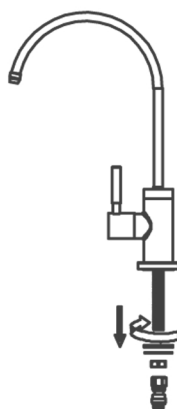
FAUCET INSTALLATION

1



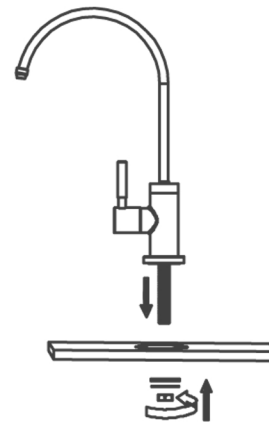
Ensure there is a Ø13mm
hole diameter in the countertop.

2



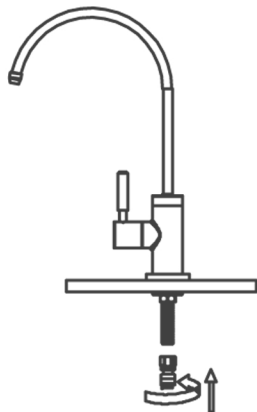
Remove the mounting nut
from faucet.

3



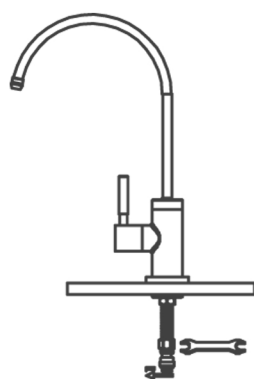
Insert faucet into countertop hole
and secure mounting nut.

4



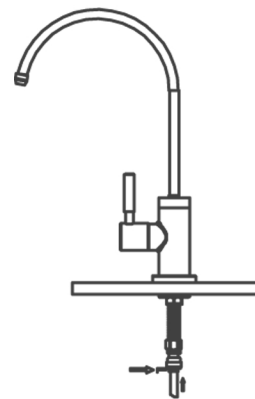
Connect the appropriate connector
size. We include a 1/4" and a 3/8"
connector. Attached supply hose
(not provide with this water tap)

5



Tighten gently hose connection
with a wrench.

6



Check for any water leak or kinked
hose and correct accordingly.

CARE AND CLEANING

Clean the faucet frequently using mild soap or an on-abrasive cleaner and then quickly rinse with water and dry with soft cloth only.

Using abrasive cleaners, solvents, acid cleaners or any scrubbing detergent, polisher or scraper will damage the finish and void the warranty.

WARRANTY

For additional technical assistance or for any questions or concerns about your faucet's warranty, please contact us.

www.stylishkb.com/warranty

www.stylishkb.com

care@stylishkb.com

+1-855-789-5352

Stylish International Inc Follow us on Instagram! Check out and let us know your comments [stylish.international.inc](https://www.instagram.com/stylish.international.inc)

Products and specifications shown are subject to change without notice. Please contact our technical support at care@stylishkb.com for any further queries, replacement parts requests, etc. ©2019 Stylish® all right reserved.