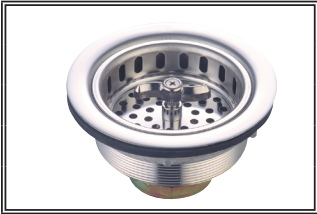


SPECIFICATION SHEET



CAST BRASS DUO BASKET STRAINER



ACS-300600 SHOWN

Model #: _____

Specific Features: _____

Project Name: _____

Submitted For: _____

Date: _____

- Cast Brass Duo Basket Strainer
- Heavy Duty Design Fits all 3-1/2" or 4" Drain Opening
- Long lasting finish
- Removable basket strainer with open/close stopper that seals tightly
- Post Type Strainer
- Features Cast Brass Body

| Model # | Features | Finish | |
|------------|----------|--------|--|
| ACS-300600 | | CP | |

