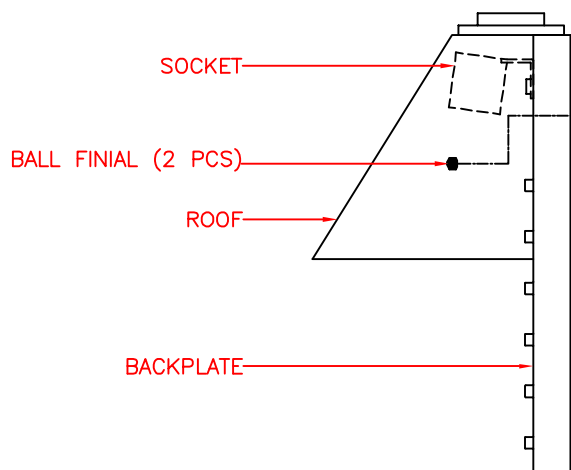


**FRONT VIEW:**



**SIDE VIEW:**

## PRODUCT SPECIFICATIONS

**NOTE:** THE ACTUAL FINISH IS GILDED COPPER.

### OVERALL ASSEMBLED DIMENSIONS

HEIGHT: 31.8 CM (12-1/2"), WIDTH: 30.5 CM (12"), EXTENSION: 17.8 CM (7").

**1 LIGHT:** UL LISTED, 100 WATT, E27 MEDIUM BASE CERAMIC SOCKET.

**BACKPLATE:** PAINTED STEEL, 30.5 CM (12") LENGTH x 24.2 CM (9-1/2") WIDTH x 2.5 CM (1") HEIGHT. (2) HOLES IN BACKPLATE FOR MOUNTING SCREWS TO PASS THROUGH.

**ROOF:** PAINTED STEEL, 30.5 CM (12) WIDTH x 15.2 CM (6") EXTENSION x 15.5 CM (6-1/8") VERTICAL HEIGHT.

**SUPPLY WIRE:** UL LISTED. 18 AWG, 105', MUST EXTEND A MINIMUM OF 15.2 CM (6") PAST CENTER OF BACKPLATE. WIRES MUST BE LEAD FREE.

**LABELS:** CETL, MANUFACTURING DATE, MODEL # AND COUNTRY OF ORIGIN LABELS PROVIDED ON INSIDE OF BACKPLATE. RELAMPING LABEL FOR 100 WATT TYPE "A" BULB PROVIDED ON SOCKET. RELAMPING LABELS ARE NOT ALLOWED TO BE PLACED ON THE OUTSIDE OF THE PRODUCT.

### PACKAGING AND SHIPPING

THE ITEM IS ASSEMBLED FOR SHIPPING AS SHOWN. THE LANTERN IS SECURED SO THEY CAN NOT MOVE DURING SHIPPING.

HARDWARE PACK #005 PROVIDED. ENTIRE FIXTURE IS COVERED IN A CLOSED PLASTIC BAG WITH A SMALL BAG OF SILICA INSIDE.

THE CARTON IS MADE OF DOUBLE WALL, CORRUGATED CARDBOARD "A MA A". BROWN IN COLOR. THE INNER PACKING IS DIE-CUT CARDBOARD OR STYROFOAM TO PROTECT AND SECURE THE LANTERN AND MUST PASS THE FEDEX AND ISTA-3A DROP TEST REQUIREMENTS.

EACH CARTON SHALL BE PRINTED WITH A LINE DRAWING AND THE KENROY HOME NAME AND LOGO, MODEL NUMBER AND FINISH, EACH CARTON SHALL BE PROVIDED A UPC LABEL. THE UPC BAR CODE AS FOLLOWS: 053392102791.

### OTHER DETAILS:

ENTIRE BACKPLATE ASSEMBLY MUST SIT FLUSH AGAINST WALL SURFACE.

ALL VISIBLE PARTS MUST MATCH FIXTURE FINISH UNLESS OTHERWISE SPECIFIED.

MODEL 10161COP INSTRUCTIONS ARE TO BE PRINTED CLEARLY ON QUALITY PAPER AND PACKED WITH EACH FIXTURE.

ALL BAGS MUST BE LABELED WITH OFFICIAL "THIS BAG IS NOT A TOY" STATEMENT.

DIMS OF UNIT BOX: 37 CM (14-9/16") LENGTH x 35 CM (13-3/4") WIDTH x 24 CM (9-7/16") HEIGHT. (CUFT.: 1.1')

DIMS OF MASTER BOX: 76 CM (30") LENGTH x 72 CM (28-5/16") WIDTH x 26 CM (10-1/4") HEIGHT. (4 PCS/CTN) (CUFT.: 5')

NET WEIGHT (UNIT): 3.3 LBS. GROSS WEIGHT (UNIT): 5.1 LBS.

THIS ITEM MUST BE CETL APPROVED FOR WET LOCATION, THE CETL NUMBER IS 4000819.

**KENROY  
HOME**

3723 Regent Boulevard  
JACKSONVILLE, FL. 32224  
PHONE: 904-642-4340  
FAX: 904-642-4150

THIS DOCUMENT AND THE INFORMATION THAT IT DISCLOSES IS THE EXCLUSIVE PROPERTY OF KENROY HOME. ANY REPRODUCTION OR USE OF THIS DRAWING IN PART OR IN WHOLE, WITHOUT THE EXPRESS CONSENT OF THE PROPRIETOR IS PROHIBITED. © 2009 KENROY HOME.

DATE: 1/12/2009

SCALE: NONE

DRAWN BY: JAMES

REFERENCE:

FAIRBANKS LARGE WALL LANTERN

REVISION DATE:  
8/9/10 change UL to CETL

REVISION DATE:  
10/10/2013 add package drawing

REVISION DATE:

APPROVAL:

MODEL #:

10161COP

FINISH:

GC

PAGE:

1

OF: 1