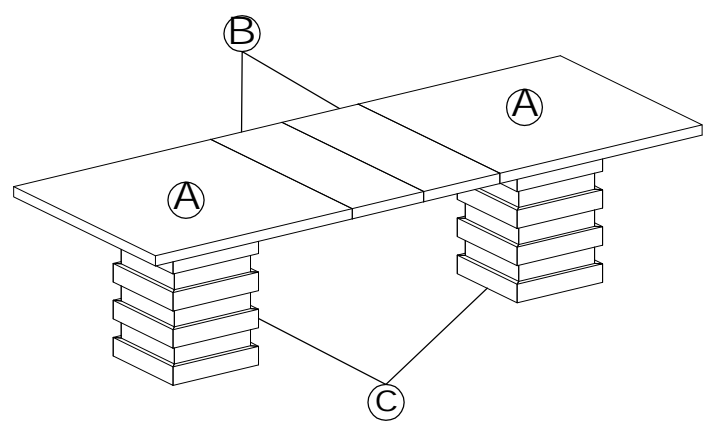


ASSEMBLY INSTRUCTIONS

PLAZA EXTENSION DINING TABLE



PARTS CHECK LIST

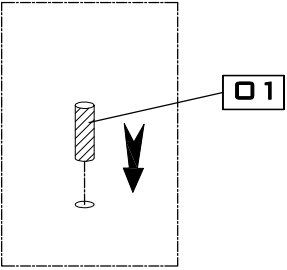
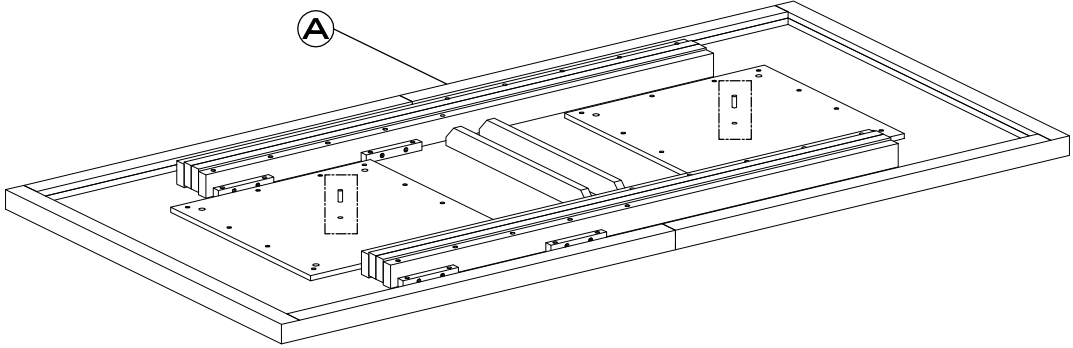
CODE	COMPONENTS	QTY
Ⓐ	TABLE TOP	x01
Ⓑ	LEAF TOP	x02
Ⓒ	PEDESTAL LEG	x02

HARDWARE CHECK LIST

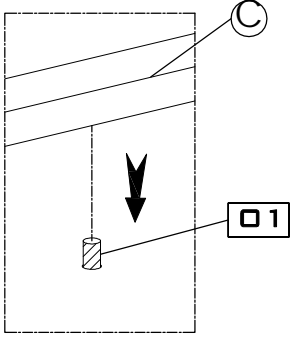
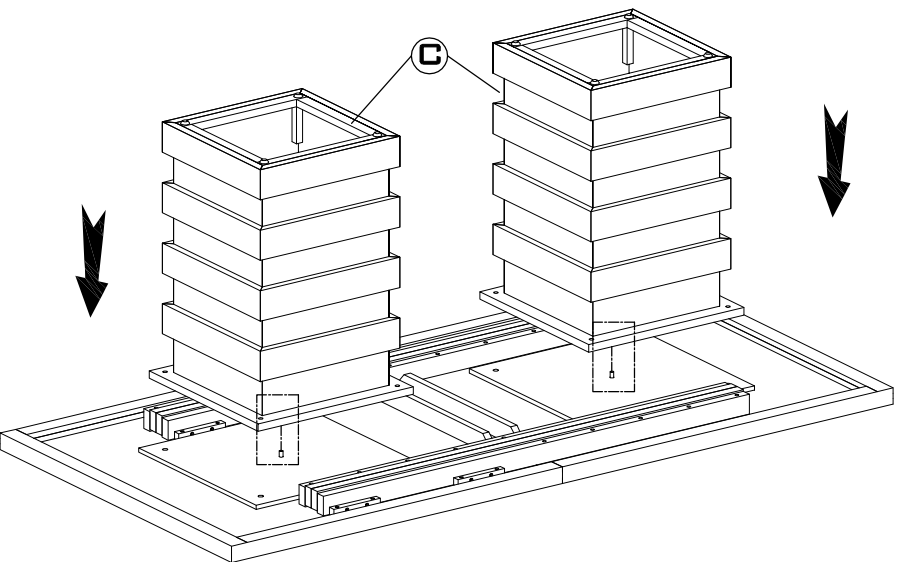
CODE	DESCRIPTION	QTY
01	DOWEL	x02
02	BOLT	x08
03	SPRING WASHER	x08
04	FLAT WASHER	x08
05	ALLEN KEY	x01

- PLEASE DO NOT DISCARD ANY OF THE PACKAGING UNTIL YOU HAVE CHECKED ALL THE PARTS AND THE PACKS OF HARDWARE.
- BEFORE YOU BEGIN TO ASSEMBLE YOUR NEW PIECE OF FURNITURE, PLEASE CHECK TO ENSURE THAT ALL PARTS HAVE BEEN SUPPLIED.
- FOLLOW INSTRUCTIONS CLOSELY AS DEVIATION FROM THEM MAY VOID YOUR WARRANTY AND PRESENT A POSSIBLE SAFETY RISK.
- IT IS RECOMMENDED THAT ASSEMBLY IS DONE ON A SOFT SURFACE LIKE CARPET TO AVOID ANY DAMAGE.
- PERIODICALLY CHECK AND RE-TIGHTEN ANY FASTENERS. WIPE DOWN ALL SURFACES WEEKLY WITH A CLEAN CLOTH. DO NOT CLEAN ANY SURFACES WITH HARSH ABRASIVES OR CHEMICALS.

1.

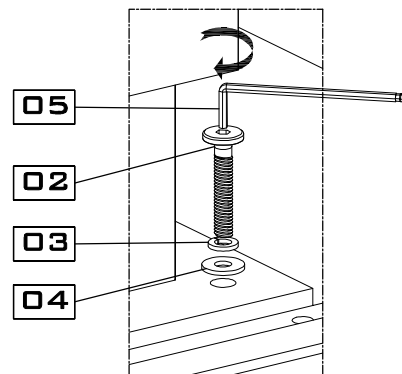
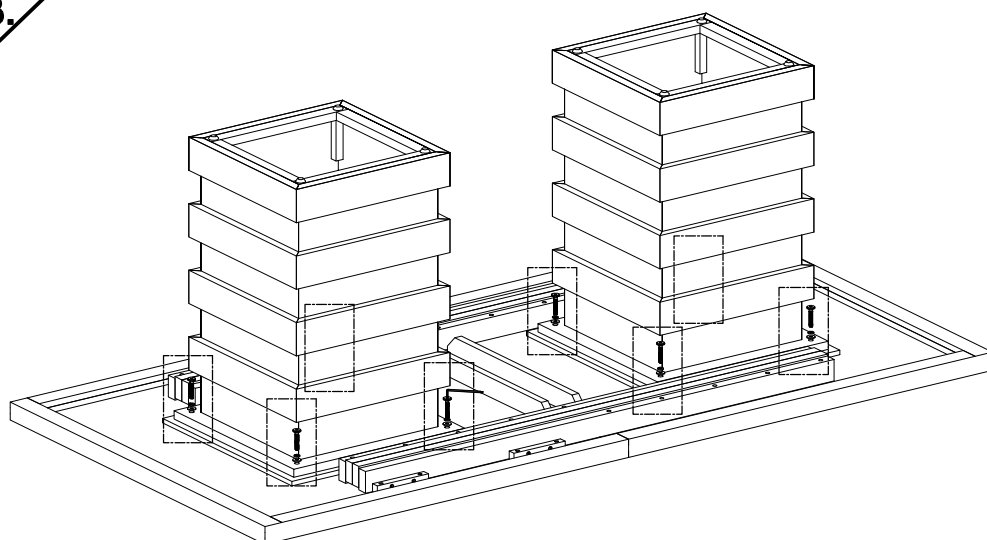


2.



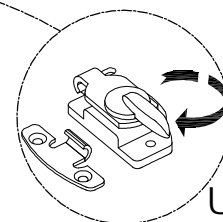
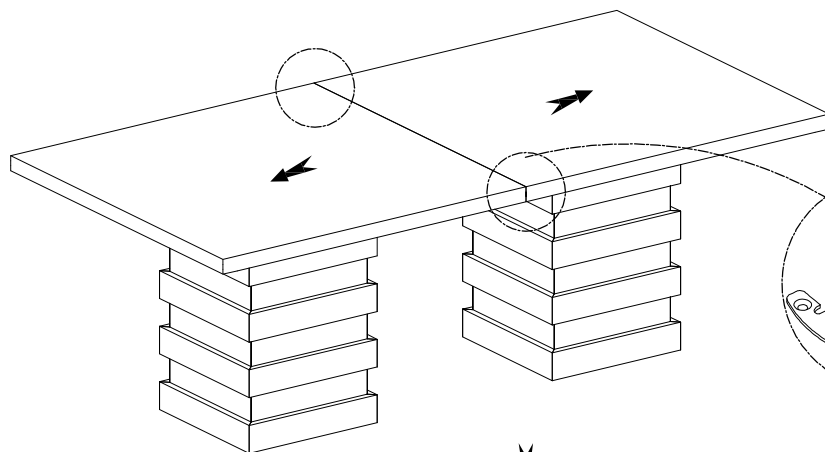
ASSEMBLY INSTRUCTIONS PLAZA EXTENSION DINING TABLE

3.



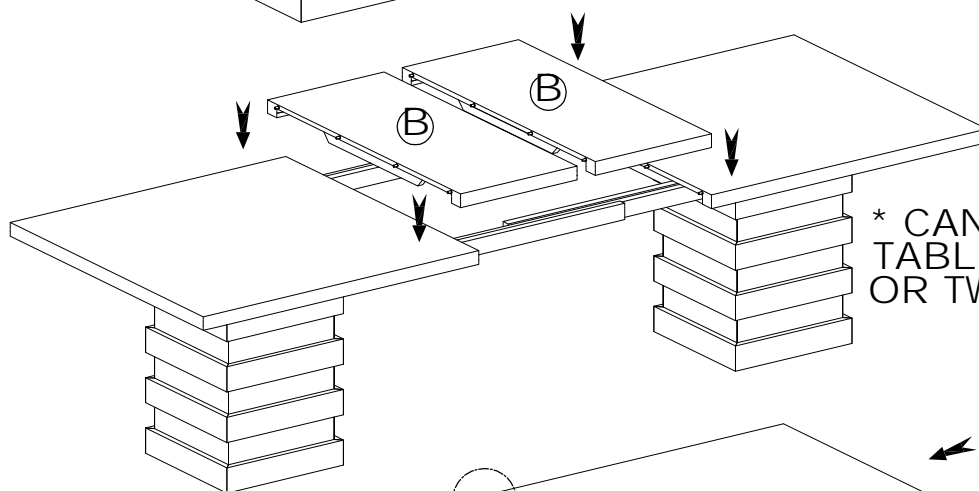
4.

CLOSE



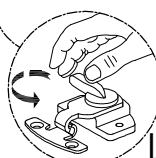
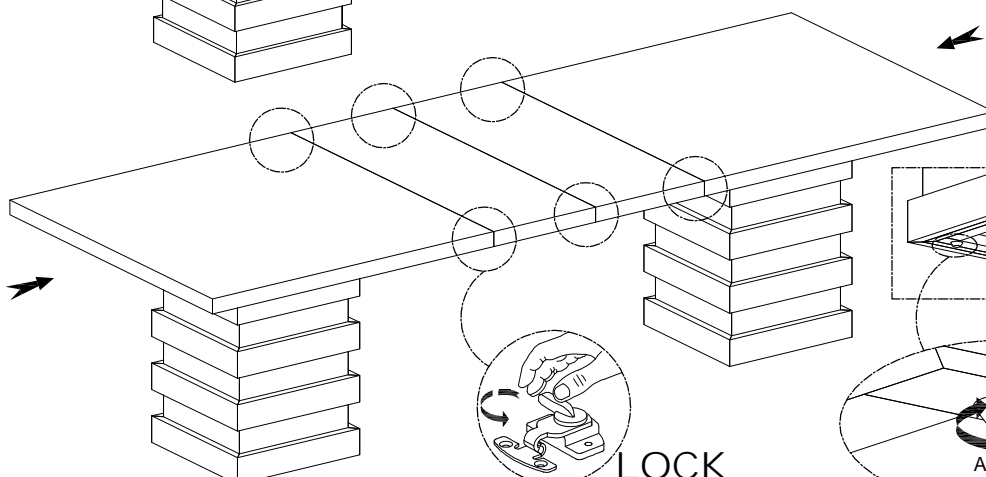
UNLOCK

OPEN

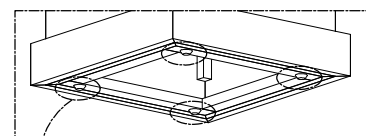


* CAN USE
TABLE WITH ONE
OR TWO LEAVES

FINISH



LOCK



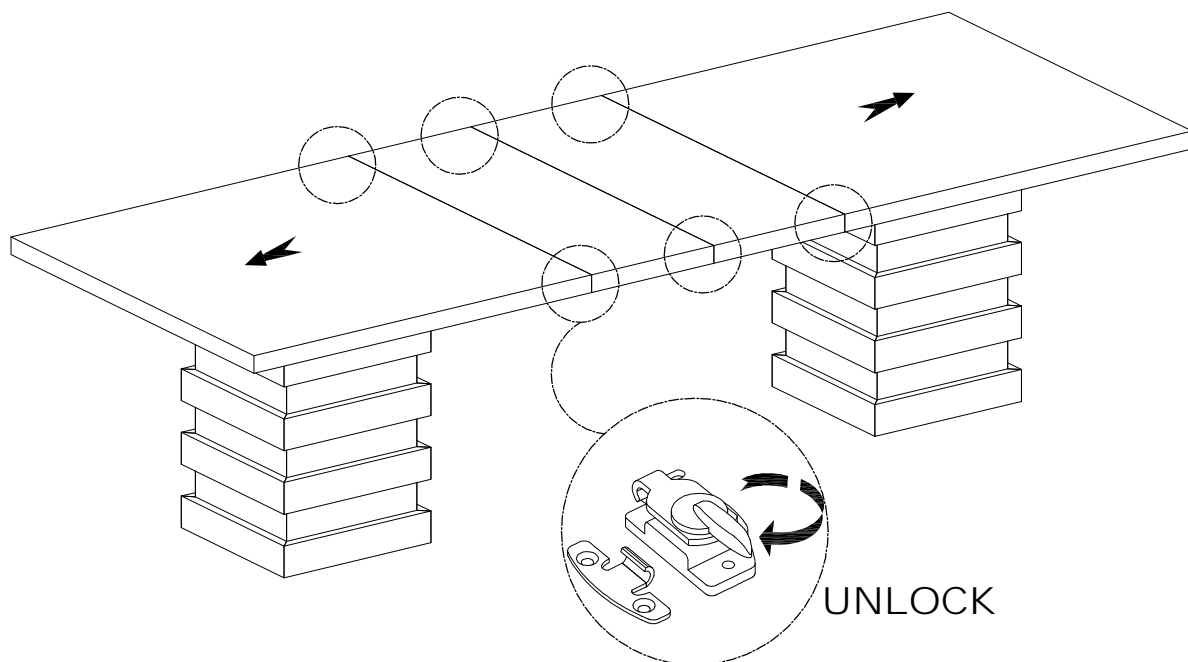
ADJUST
FEET LEVELERS

B x

ASSEMBLY INSTRUCTIONS PLAZA EXTENSION DINING TABLE

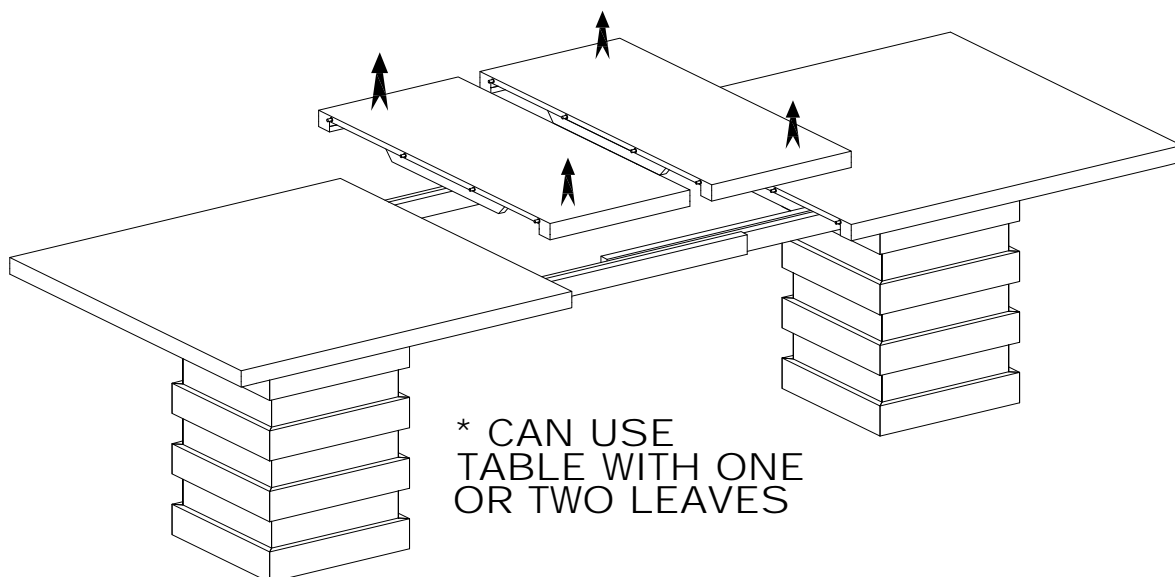
5.

CLOSE



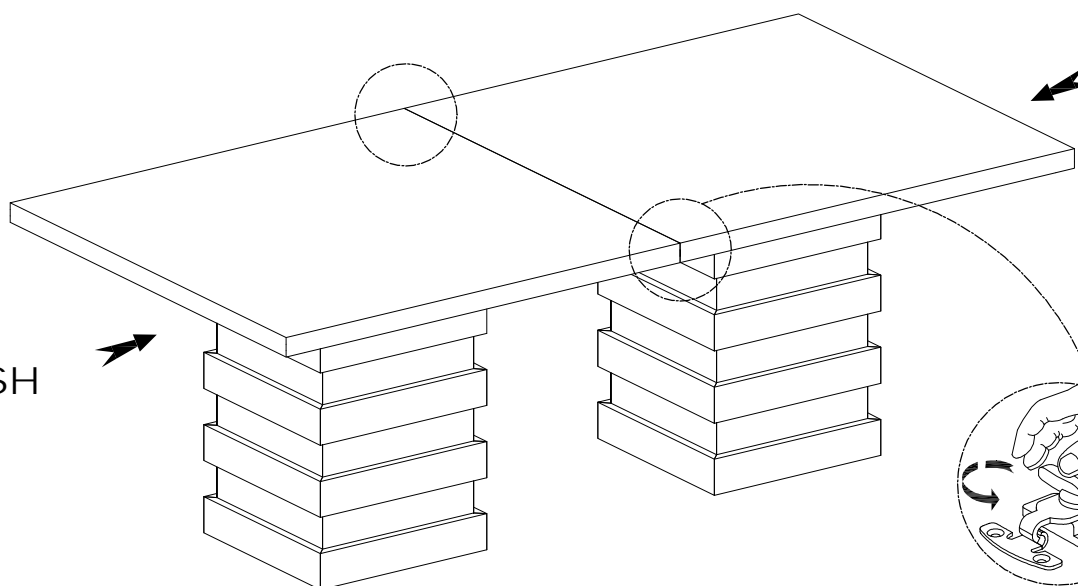
UNLOCK

OPEN



* CAN USE
TABLE WITH ONE
OR TWO LEAVES

FINISH



LOCK