



**Poise®**  
Under-Mount Kitchen Sink  
**K-3160**

**Features**

- Fits minimum 36-inch sink base cabinet.
- Large/medium bowls.
- 9-inch depth.
- No faucet holes.
- Slim divide offers a sophisticated look and maximizes basin space.
- SilentShield® sound-absorption technology offers quieter performance.
- Includes installation hardware, bottom sink rack for larger basin, and bamboo cutting board.

**Material**

- Handcrafted from 16-gauge stainless steel.

**Installation**

- Under-mount

**Recommended Products/Accessories**

K-3143 Sink Rack  
K-6377 Sponge Caddy  
K-6378 Kitchen Brush Caddy  
K-6379 Kitchen Squeegee  
K-6382 Disinfecting Wipes Dispenser  
K-6383 Soap Dispenser  
K-8618 Paper Towel Holder  
K-8619 Flexible Kitchen Mat  
K-8801 Sink Strainer  
K-8799 Sink Strainer  
K-8624 Dish Scraper

**Optional Products/Accessories**

K-6133 Wine Glass Rack

**Included Components**

Product consists of:

K-3140 Cutting Board  
K-3143 Sink Rack  
91915 Hardware Kit

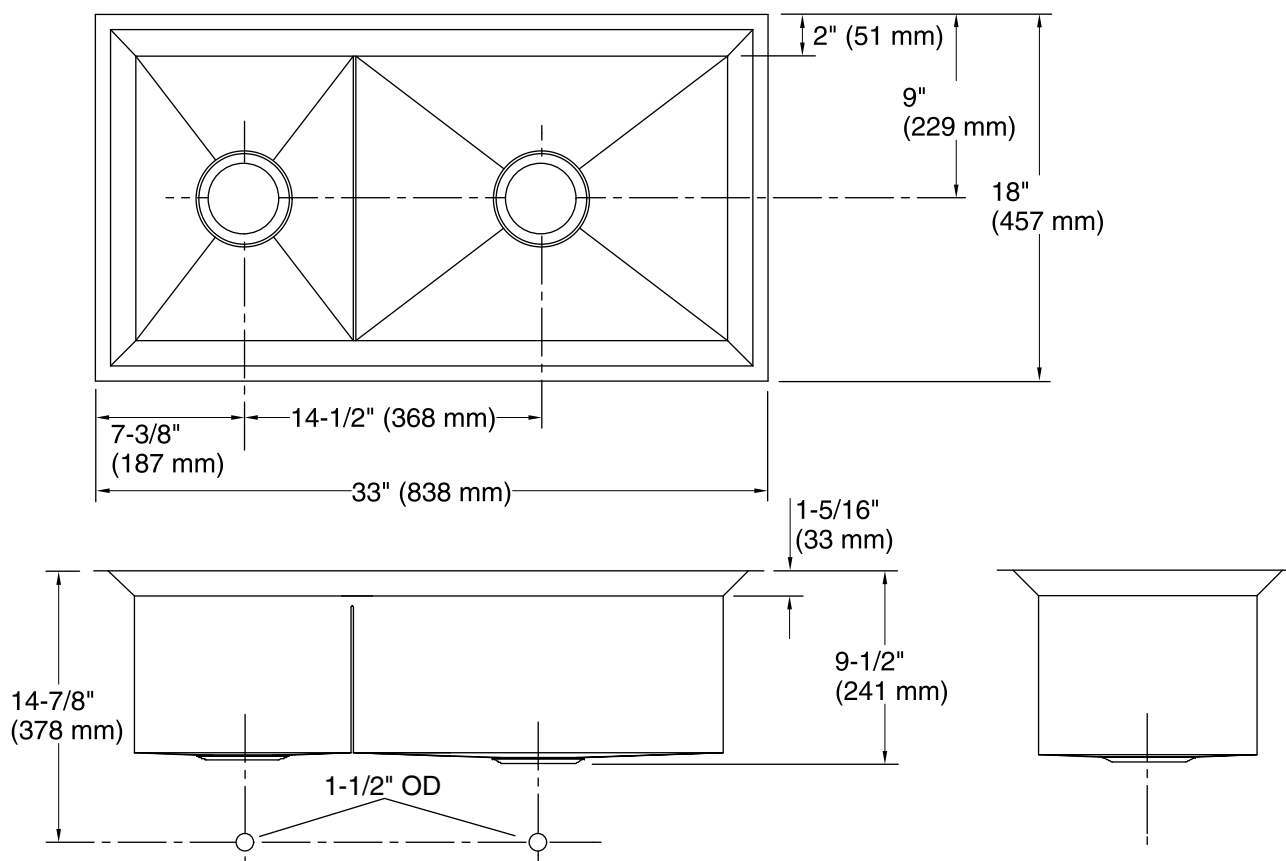


**Codes/Standards**

ASME A112.19.3/CSA B45.4

**Lifetime Limited Warranty for  
KOHLER® Stainless Steel Sinks**

See website for detailed warranty information.



## Technical Information

All product dimensions are nominal.

Bowl configuration: Off-set Large/small

Installation: Under-mount

Min. base cabinet width: 36" (914 mm)

Bowl area (Left): Length: 10-11/16" (271 mm)

Width: 14" (356 mm)

Bowl depth: 9-1/8" (232 mm)

Bowl area (Right): Length: 18-3/16" (462 mm)

Width: 14" (356 mm)

Bowl depth: 9-1/8" (232 mm)

Drain hole: 3-5/8" (92 mm)

Template: 1021992-7, required, included

## Notes

Install this product according to the installation instructions.

Allow a minimum of 2" (51 mm) clearance around the sink rim for clip attachment.