

**CADET® CORNER WHIRLPOOL AND
BATHING POOL**

2775.018W Whirlpool

- Acrylic with fiberglass reinforcement
- Pre-leveled tub bottom
- Dual lumbar back rest positions
- Molded-in arm rests with elbow supports
- Accessory deck area
- Pre-leveled tub bottom
- Single speed pump/motor
- Factory installed power cord with plug
- Eight-jet system featuring:
 - Two multi-directional and flow adjustable Acumax™ high output jets
 - Six multi-directional and flow adjustable Acumax body massage jets including two in each lumbar area
- Side-mounted air switch On/Off
- Two silent air volume controls
- Quick Connect Safe-T-Heater connection system

2775.018WC EverClean® Whirlpool:

- Same as 2775.018W except with the EverClean System

2775.002 Bathing Pool only

Nominal Dimensions:

2159 x 1524 x 502mm
(85" x 60" x 19-3/4")

Compliance Certifications -

Meets or Exceeds the Following Specifications:

- Underwriters Laboratories - Hydromassage Bathtubs UL 1795
- ASME A112.19.7M for Whirlpool Appliances
- ANSI Z124.1 for Plastic Bathtubs
- ASTM E162 for Flammability
- NFPA 258 for Smoke Density

American Standard whirlpools and air baths with EverClean® incorporate a safe and effective silver-ion antimicrobial additive right into the circulation piping to protect the pipes from mold, mildew, algae and fungus that could cause deterioration or staining of the pipes.

SEE REVERSE FOR PRODUCT DIMENSIONS
AND SPECIFICATIONS



Required Components (Specified finish):

- Color:
- Bath Filler
- Universal Bath Drain: 1583.470
- Deep Soak® Bathtub Drain (Bathing Pool only)**: 1640.305

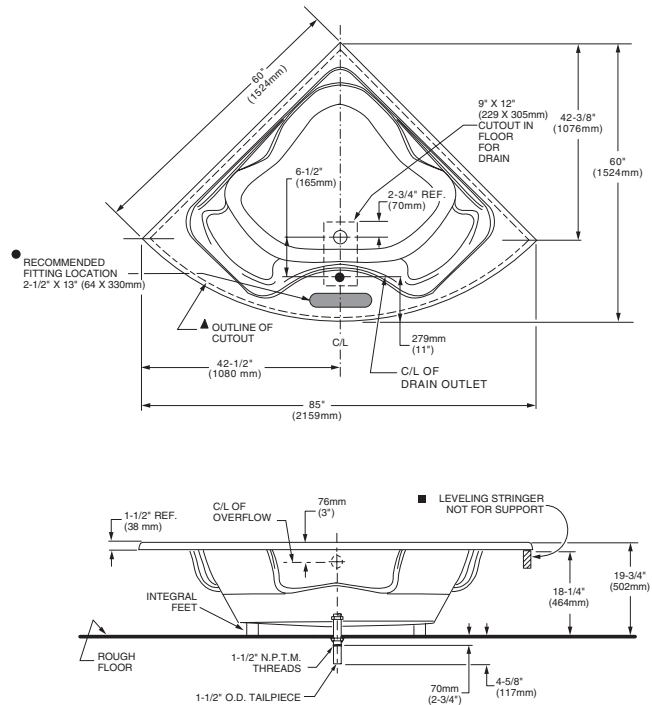
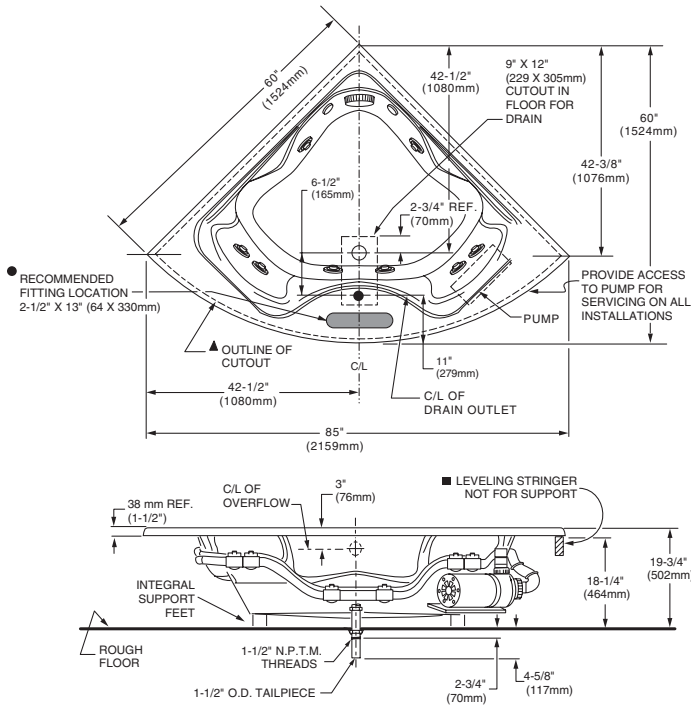
Optional Components:

- Safe-T-Heater*: 9075.120
- Universal Tile Bead Kit: 751755-100
- Grab Bar Kit: 9822.200-two per kit (specify finish)

For color/finish availability and other faucet choices, please see the Product Selector and Pricing Guide.

* **NOTE:** the Safe-T-Heater is designed to maintain water temperature during operation. It will not heat cold water to desired bathing temperature.

** **NOTE:** Deep Soak Bath Drain provides an additional 2" of water depth for a more luxurious bath.



GENERAL SPECIFICATIONS FOR 2775 WHIRLPOOL	
INSTALLED SIZE	85 X 60 X 19-3/4in. (2159 X 1524 X 502mm)
WEIGHT	130 Lbs. (59 Kg.)
WEIGHT w/WATER	756 Lbs. (343 Kg.)
GAL. TO OVERFLOW	75 Gal. (284 L.)
MIN. OPERATING GAL.	60 Gal. (227 L.)
BATHING WELL AT SUMP	32 X 32 In. (813 mm X 813 mm)
BATHING WELL AT RIM	46 X 46 In. (1168 X 1168mm)
WATER DEPTH TO OVERFLOW	14 In. (356 mm)
FLOOR LOADING (PROJECTED AREA)	34 Lbs./Sq. Ft. (115 Kgs/Sq. m.)
PTS.	41.7
CUBE (FT ³)	70.4
WHIRLPOOL ELECTRICAL SPECIFICATIONS	
PUMP	120 V, 60 HZ, 15A GFCI

GENERAL SPECIFICATIONS FOR 2775 BATHING POOL	
INSTALLED SIZE	85 X 60 X 19-3/4in. (2159mm X 1524 mm X 502mm)
WEIGHT	105 Lbs. (48 Kg.)
WEIGHT w/WATER	730 Lbs. (328 Kg.)
GAL. TO OVERFLOW	75 Gal. (284 L.)
BATHING WELL AT SUMP	32 X 32 In. (813 mm X 813 mm)
BATHING WELL AT RIM	46 X 46 In. (1168 X 1168mm)
WATER DEPTH TO OVERFLOW	14 In. (356 mm)
FLOOR LOADING (PROJECTED AREA)	33 Lbs./Sq. Ft. (111 Kgs/Sq. m.)
PTS.	41.7
CUBE (FT ³)	70.4

NOTES:

BATH CAN BE INSTALLED EITHER ABOVE OR BELOW FLOOR LINE AS PIER, ISLAND, OR PENINSULA TYPE INSTALLATION. SUMP OF BATH IS SUPPORTED BY INTEGRAL FEET. NO ADDITIONAL SUPPORT REQUIRED. ENCLOSING MATERIAL BY OTHERS.

REFER TO INSTALLATION INSTRUCTIONS SUPPLIED WITH WHIRLPOOL FOR ADDITIONAL INFORMATION.

OPTIONAL 2 WALL TILING BEAD KIT AVAILABLE AND MUST BE ORDERED SEPARATELY.

FITTINGS NOT INCLUDED AND MUST BE ORDERED SEPARATELY.

PROVIDE SUITABLE REINFORCEMENT FOR ALL SUPPORTS.

IF INSTALLING A DECK-MOUNTED FITTING, BEFORE DRILLING ANY HOLES: CHECK FOR INTERFERENCE WITH CIRCULATING SYSTEM PIPING, DRAIN OVERFLOW, AND APRON INSTALLATION. MOUNTING HOLES DRILLED BY INSTALLER.

IMPORTANT:

Dimensions of fixtures are nominal and may vary within the range of tolerances established by ANSI Standard Z124.1/A112.19.7M. These measurements are subject to change or cancellation. No responsibility is assumed for use of superseded or voided leaflet.