

PIONEER

ENGINEERING EXCELLENCE

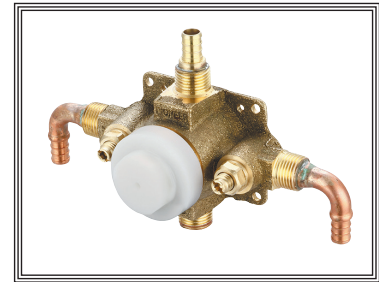
#4022B

SPECIFICATION SHEET

DESCRIPTION

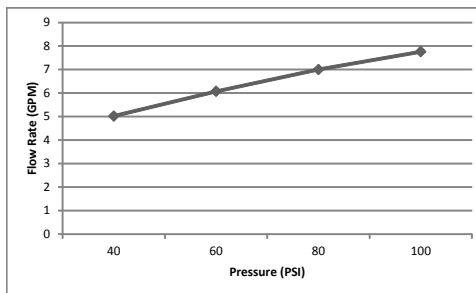
- Single Handle Pressure Balance Tub and Shower Valve Set
- 1/2" PEX Inlet & Shower Outlet W/Combo CXC & IPS Tub Outlet
- Cartridge, Sleeve, Lock nut, Retaining Ring Ships With Trim Kit
- Brass Inlet Stops
- Back to Back Installation

Note:- Valve can be tested with air (200 PSI) or water (300 PSI) without Cartridge using supplied test cap.



#4022B SHOWN

4022B Flow Rate (GPM) Vs Pressure (PSI)*



STANDARDS APPLICABLE

- ASME A112.18.1
- ASSE 1016
- CUPC / IAPMO LISTED
- F1807 (For PEX Crimp fittings)

Model #: _____

Specific Features: _____

Project Name: _____

Submitted For: _____

*Note:- This information is provided for reference only. Actual Flow Rate may vary depending on installation and inlet pressures.

Model	Description	Finishes	
#4022B	Single Handle Tub and Shower Valve Set	o NA	
#4022B-B	Single Handle Tub and Shower Valve Set-Builder Tract Pack	o NA	



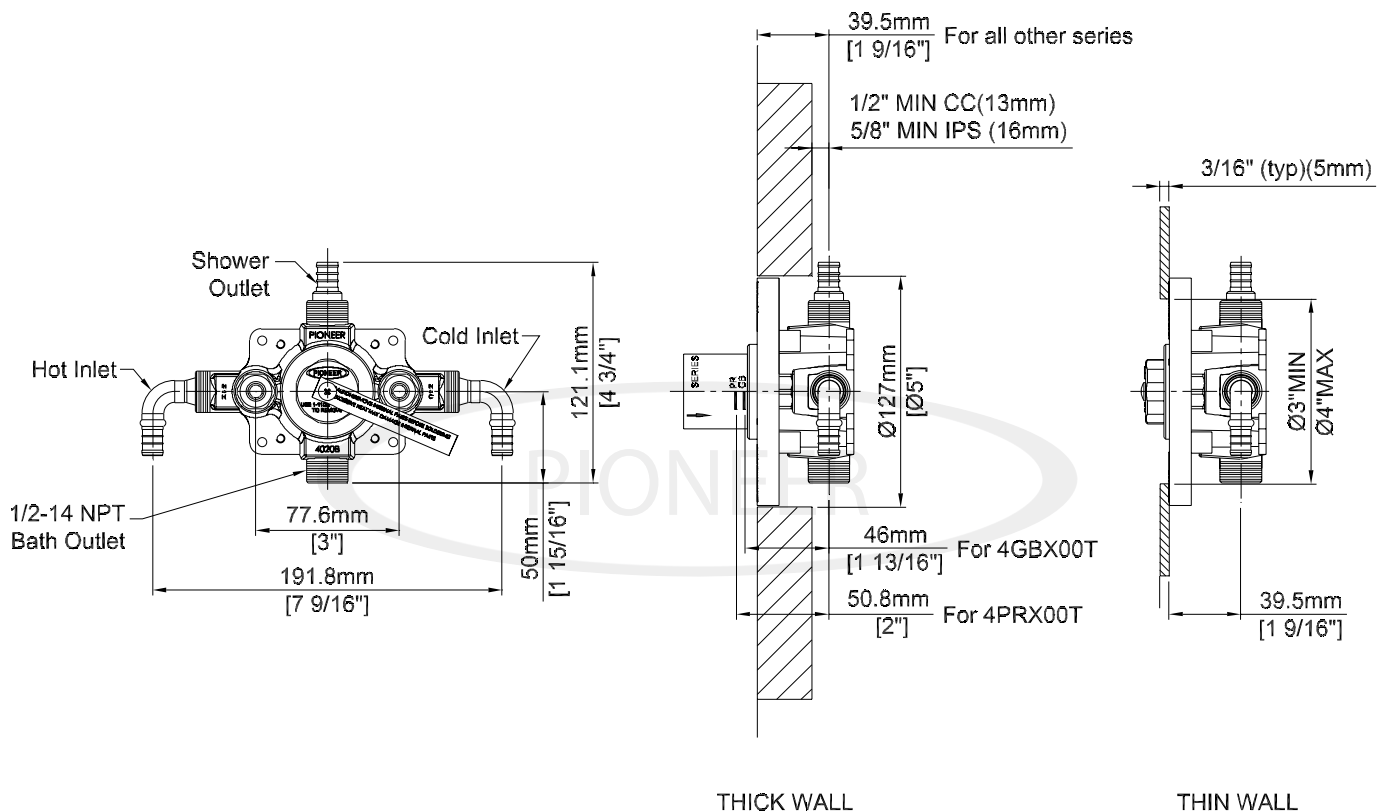
ENGINEERING EXCELLENCE

Pioneer: 1-800-338-9468
Commerce, CA 90040
www.pioneerind.com
Pioneer Industries, Inc. © 2013

DMSP4022B/REV. 12 2012
Page 1 of 2

Installation Note:

For thicker wall installation stem extension (X-4400088) is available. This will extend stem length by 1".

**Product Diagram**

ENGINEERING EXCELLENCE

Pioneer: 1-800-338-9468
 Commerce, CA 90040
www.pioneerind.com
 Pioneer Industries, Inc. © 2013

DMSP4022B/REV. 12 2012

Page 2 of 2