



**Levity®**  
Frameless Sliding Bath Door  
**K-706004-L**

**Technology**

- Frameless, 1/4-inch-thick Crystal Clear tempered glass.
- Innovative roller design simplifies installation and provides out-of-plumb adjustability while glass is installed.
- Cushioned center guide provides quiet sliding action.
- Gently curved towel bars, inside and outside, provide integrated storage on the door.
- CleanCoat® nanotechnology helps prevent bacteria, mildew and water stains on your glass, making it easy to clean and looking new.

**Installation**

- Sliding bath door.
- Not for use in hospitality.

**Included Components**

Additional Components:  
Hardware kit



**Codes/Standards**

CPSC 16CFR 1201  
ANSI Z97.1

**KOHLER® One-Year Limited Warranty**

See website for detailed warranty information.

**Available Colors/Finishes**

*Color tiles intended for reference only.*

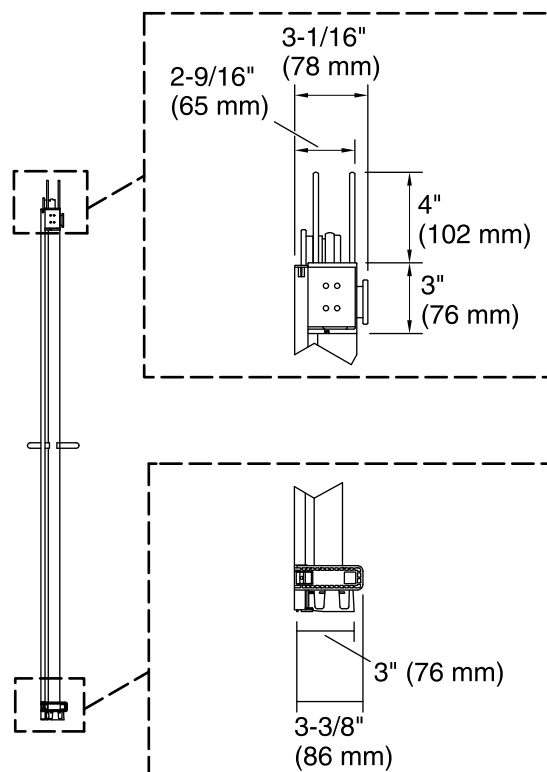
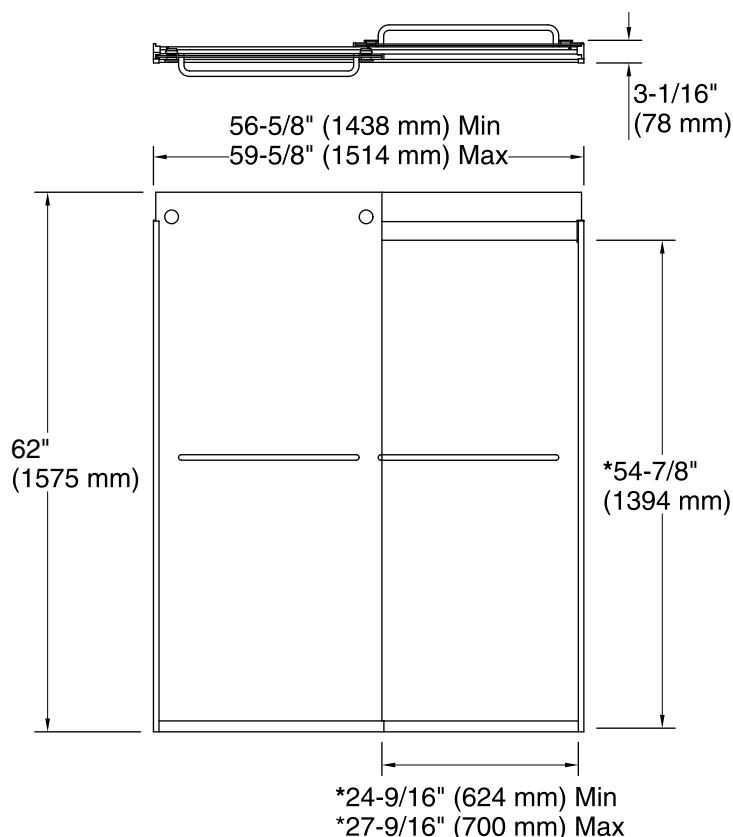
| Color | Code | Description |
|-------|------|-------------|
|-------|------|-------------|

|  |     |  |
|--|-----|--|
|  | SH  |  |
|  | MX  |  |
|  | ABV |  |
|  | ABZ |  |

**Available Glass Options**

| Code | Description |
|------|-------------|
|------|-------------|

|   |               |
|---|---------------|
| L | Crystal Clear |
|---|---------------|



**\*Walk-through**

## Technical Information

All product dimensions are nominal.

Installation type: For bath installation

Opening style: Sliding/Bypass

Opening Width - Min: 56-5/8" (1438 mm)

Opening Width - Max: 59-5/8" (1514 mm)

Walk-through - Min: 24-9/16" (624 mm)

Walk-through - Max: 27-9/16" (700 mm)

Glass thickness: 1/4" (6 mm)

Glass coating: CleanCoat®

## Notes

Install this product according to the installation guide.

If replacing a shower door, the narrow wall jamb design of this door may not cover the existing shower door holes.

The vertical opening should be a minimum of 64-1/2" (1638 mm) to allow for installation clearance.