

FOSSIL BLU

Fireclay and Copper Sink Installation Guide

Version 1.7

Installation and Care Manual

Fireclay Farmhouse Kitchen Sinks

FOSSIL BLU

General Recommendations:

Please read installation and care instructions thoroughly. Inspect your sink for any noticeable damage before installation. Check all local applicable plumbing and building codes.

These instructions are based on application to composite material or solid surface countertop installation only; countertop application to stone, marble, granite or butcher-block should be referred to an experienced countertop fabricator for custom installation.

Because Fossil Blu Farmhouse sinks are individually handmade, we suggest using experienced and professional installers only. For custom cutting of countertop and installation of the actual sink, on-site installation is also recommended. Acceptable variances are approximately 1/8 of an inch. Alignment to the cut-out and precise application and trimming of any adhesive sealant are critical to a superior fit and finished look. Please take extra care in this regard.

Fossil Blu Farmhouse sinks require custom order cabinets. Please consult your cabinet dealer.

Fossil Blu sinks does not accept any liability for damage to countertop, sink fixture, faucets or personal injury during installation. Warranty is void if installation instructions are not followed.

Models Covered:

FSW1000, FSW1001,
FSW1002, FSW1003
(For copper models, see page 4)

Tools / Materials Needed:

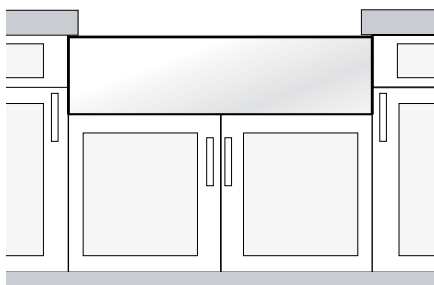
- Tape Measure
- Hacksaw / Jigsaw
- Rags
- Pencil (Not Ink)
- Framing Square
- Ear and Eye Protection
- Shims
- Denatured Alcohol
- Silicone Adhesive Sealant
- Wood Braces

Be sure to use proper tools and always wear personal safety devices for your protection.

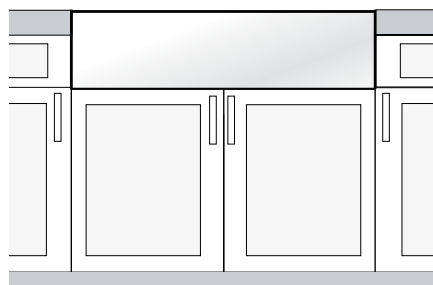
! **CAUTION:** Undermount sinks require that your countertop is fabricated to exacting standards and the sink be installed using meticulous procedures. For these reasons, we suggest you leave the installation to a seasoned professional.

Installation Options:

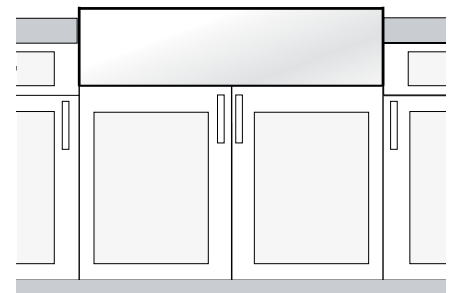
Fossil Blu Farmhouse sinks offer installation options depending on your design.



Undermount Installation



Flush-Mount Installation

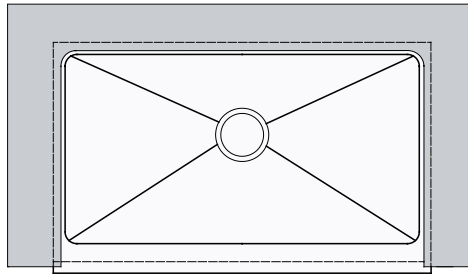
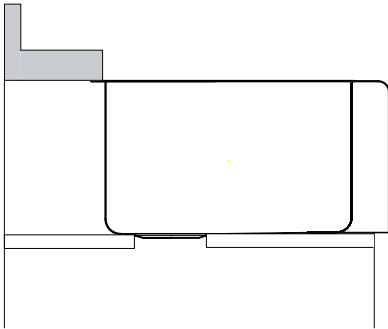


Built-Up Installation



CAUTION: All installation types need to allow room for faucet installation. Ensure adequate clearance behind the sink for any faucet and backsplash, as well as full range of motion for faucet spouts and handles.

Typical undermount installation with 1/4" reveal recommended.



Typical flush mount and built-up installation

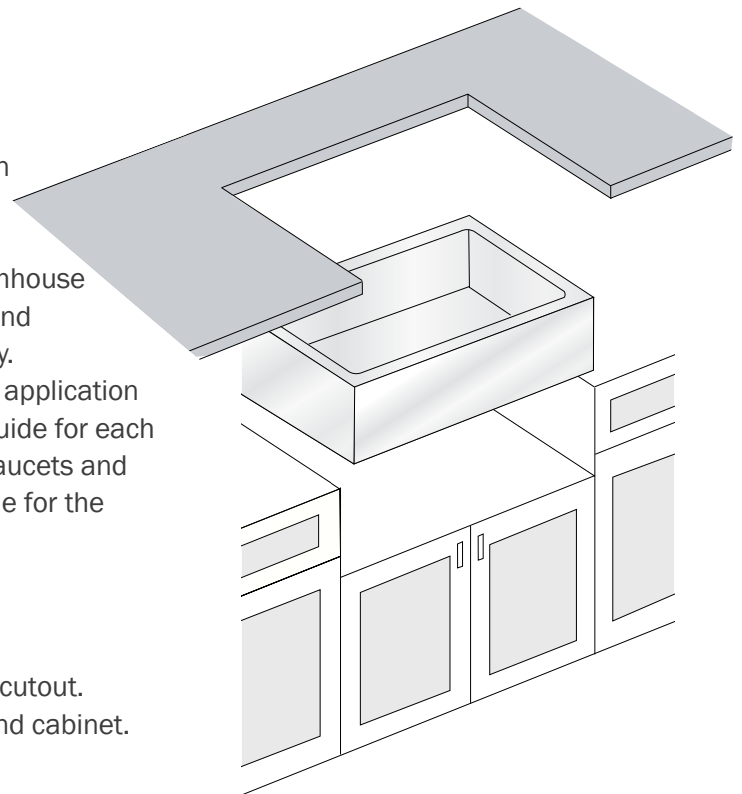
Built-up installation may expose sink sides to be raised up to 1" above the countertop.

1. Prepare the Sink Base Cabinet:

Fossil Blu Farmhouse sinks offer installation options depending on your design. Farmhouse sinks require custom order sink base cabinets with a front cutout to accommodate a 10" deep sink. Build a plywood platform on a support frame inside of the sink base cabinet. Platform must support the weight of the sink and any attachments such as garbage disposals. When the sink is placed onto a platform, make sure the top of the sink is evenly flush against the bottom of the counter-top. Allow clearance for water supply line and drains or garbage disposal, as necessary.

2. Make a Template and Cutout:

Depending on the installation option, make proper cutout of the countertop. Fossil Blu recommends a 1/4" reveal on 3 sides when installed undermount style. For a flush mount or built up installation, cut countertop along with outside line of the sink profile. Front end of Fossil Blu Farmhouse sinks are designed to be installed 3/4" extended out beyond the front end of the countertop. Cut countertop accordingly. No template is provided due to the custom nature of each application and installation. The actual sink is used as the template guide for each installation. After centering the sink and allowing for any faucets and backsplashes, use a pencil to outline the sink as your guide for the cutout, allowing for any reveal before the actual cutting.



3. Set The Sink:

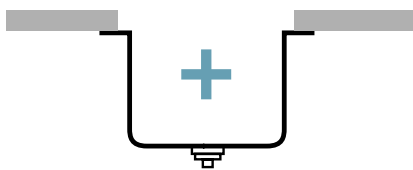
Set the sink on top of the cabinet or into the cabinet front cutout. Apply sealant if necessary as a gasket between the sink and cabinet.

4. Install the Countertop:

Carefully clean bottom of countertop and top flange of sink with denatured alcohol. Apply bead of silicone adhesive (not supplied) around the top edge of the sink. Place countertop onto the sink. Remove excess sealant from the lip or any surfaces with a cleaner recommended by manufacturer of adhesive sealant.

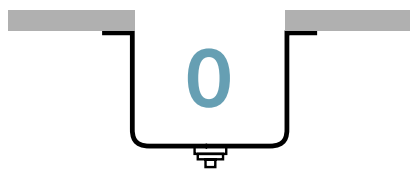
Countertop Reveal Options:

Customize the appearance of the union between your sink and countertop with these reveals:



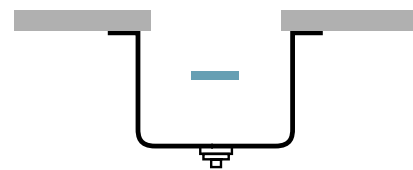
Positive Reveal

The countertop edge sits typically 1/8" back from the edge of the sink and the sink rim is exposed.



Zero Reveal

The countertop meets the edge of the sink and fits flush with the sink bowls.



Negative Reveal

The countertop extends over the edge on all sides of the sink.

Care and Maintenance of your Fossil Blu Fireclay Sink:

Much of the beauty of fireclay lies in its long-lasting wear and enduring good looks. Follow these simple sink cleaning and maintenance tips, and your Fossil Blu fireclay sink will retain its original beauty for years to come.

Simple cleaning tips to keep your sink stain-free:

- Since most soaps and detergents contain chlorides, we recommend frequent rinsing of your fireclay sink, preferably after each use, using a mild dish soap solution and a soft cloth.
- Apply baking soda or a mild abrasive cleaning product to a damp sponge or cloth and scrub the sink to remove heavier soil. Fireclay is durable enough to withstand daily cleansing with mild abrasives.
- Wipe down the bottom of the sink after each use with a dry cloth to prevent water spotting.
- Apply a thin layer of liquid wax to sink's basin about once a month, using a soft cloth or the applicator that comes with the wax. Apply the wax when the sink is dry and allow the wax to dry thoroughly before using the sink. Wax will encourage liquids to flow down the drain.
- If you happen to get a chip in the Fireclay, it is important to get it repaired immediately. Repair kits are available at most home improvement stores, and will repair and seal several small chips.
- Add some shine with a few drops of baby oil. Wipe off with paper toweling and repeat for added shine.

Maintaining the original beauty of your sink:

- Do not use strong cleaning agents such as scouring liquid or powders, and drain, tap fitting and steel cleansers which may scratch the surface.
- Do not let soap cleansers dry on the sink surface. Rinse regularly to keep the chlorides found in most cleansers from affecting the sink's natural luster.
- Steer clear of steel wool pads. The iron particles that are left behind can lead to rust and corrosion. For hard-to-clean projects, try a ScotchBrite scouring pad when the job at hand requires a little extra effort.
- Avoid leaving steel and cast iron cookware in your sink for extended periods of time. Do not set hot pans directly into the sink, and be sure to run cold water when pouring in boiling water.
- Rubber dish mats, wet sponges and cleaning pads are not recommended for a lengthy stay in your sink. Since they trap water, discoloration and staining can result.
- Just as you do not use your cutting board to clean the dishes, do not use your sink as a cutting board. Knives and other sharp kitchen instruments will naturally damage the surface of your sink.

Installation and Care Manual

Copper Farmhouse Kitchen Sinks

FOSSIL BLU

General Recommendations:

Please read installation and care instructions thoroughly. Inspect your sink for any noticeable damage before installation. Check all local applicable plumbing and building codes.

These instructions are based on application to composite material or solid surface countertop installation only; countertop application to stone, marble, granite or butcher-block should be referred to an experienced countertop fabricator for custom installation.

Because Fossil Blu Farmhouse sinks are individually handmade, we suggest using experienced and professional installers only. For custom cutting of countertop and installation of the actual sink, on-site installation is also recommended. Acceptable variances are approximately 1/8 of an inch. Alignment to the cut-out and precise application and trimming of any adhesive sealant are critical to a superior fit and finished look. Please take extra care in this regard.

Fossil Blu Farmhouse sinks require custom order cabinets. Please consult your cabinet dealer.

Fossil Blu sinks does not accept any liability for damage to countertop, sink fixture, faucets or personal injury during installation. Warranty is void if installation instructions are not followed.

Models Covered:

FSW1100, FSW1101
(For fireclay models see page 1)

Tools / Materials Needed:

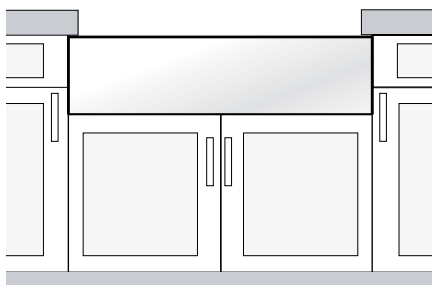
- Tape Measure
- Hacksaw / Jigsaw
- Rags
- Pencil (Not Ink)
- Framing Square
- Ear and Eye Protection
- Shims
- Denatured Alcohol
- Silicone Adhesive Sealant
- Wood Braces

Be sure to use proper tools and always wear personal safety devices for your protection.

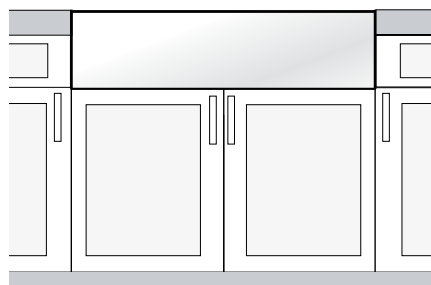
! **CAUTION:** Undermount sinks require that your countertop is fabricated to exacting standards and the sink be installed using meticulous procedures. For these reasons, we suggest you leave the installation to a seasoned professional.

Installation Options:

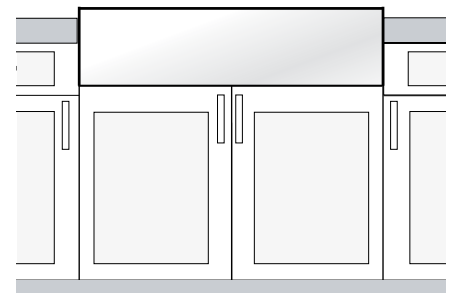
Fossil Blu Farmhouse sinks offer installation options depending on your design.



Undermount Installation



Flush-Mount Installation

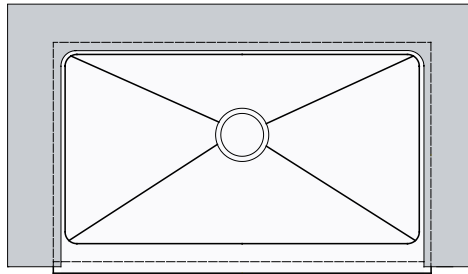
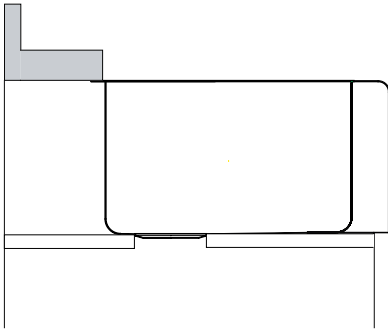


Built-Up Installation
(Fireclay Only)



CAUTION: All installation types need to allow room for faucet installation. Ensure adequate clearance behind the sink for any faucet and backsplash, as well as full range of motion for faucet spouts and handles.

Typical undermount installation with 1/4" reveal recommended.



Typical flush mount and built-up installation

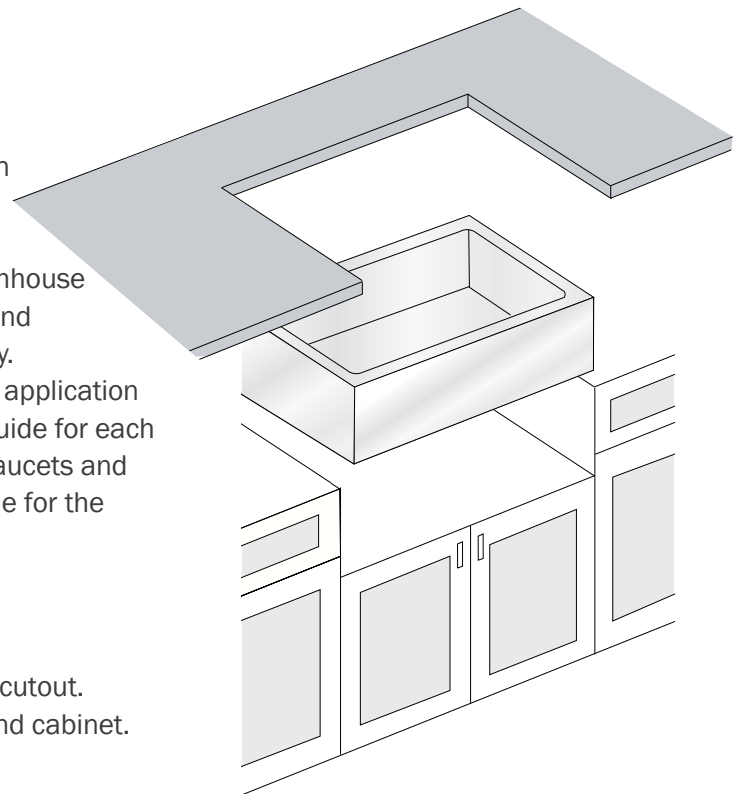
Built-up installation may expose sink sides to be raised up to 1" above the countertop.

1. Prepare the Sink Base Cabinet:

Fossil Blu Farmhouse sinks offer installation options depending on your design. Farmhouse sinks require custom order sink base cabinets with a front cutout to accommodate a 10" deep sink. Build a plywood platform on a support frame inside of the sink base cabinet. Platform must support the weight of the sink and any attachments such as garbage disposals. When the sink is placed onto a platform, make sure the top of the sink is evenly flush against the bottom of the counter-top. Allow clearance for water supply line and drains or garbage disposal, as necessary.

2. Make a Template and Cutout:

Depending on the installation option, make proper cutout of the countertop. Fossil Blu recommends a 1/4" reveal on 3 sides when installed undermount style. For a flush mount or built up installation, cut countertop along with outside line of the sink profile. Front end of Fossil Blu Farmhouse sinks are designed to be installed 3/4" extended out beyond the front end of the countertop. Cut countertop accordingly. No template is provided due to the custom nature of each application and installation. The actual sink is used as the template guide for each installation. After centering the sink and allowing for any faucets and backsplashes, use a pencil to outline the sink as your guide for the cutout, allowing for any reveal before the actual cutting.



3. Set The Sink:

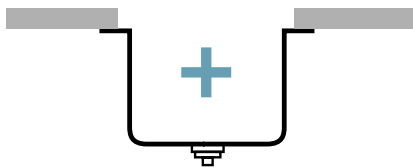
Set the sink on top of the cabinet or into the cabinet front cutout. Apply sealant if necessary as a gasket between the sink and cabinet.

4. Install the Countertop:

Carefully clean bottom of countertop and top flange of sink with denatured alcohol. Apply bead of silicone adhesive (not supplied) around the top edge of the sink. Place countertop onto the sink. Remove excess sealant from the lip or any surfaces with a cleaner recommended by manufacturer of adhesive sealant.

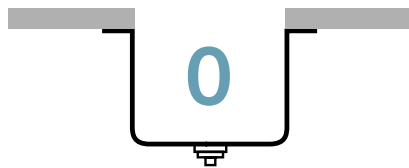
Countertop Reveal Options:

Customize the appearance of the union between your sink and countertop with these reveals:



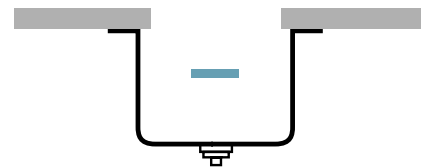
Positive Reveal

The countertop edge sits typically 1/8" back from the edge of the sink and the sink rim is exposed.



Zero Reveal

The countertop meets the edge of the sink and fits flush with the sink bowls.



Negative Reveal

The countertop extends over the edge on all sides of the sink.

Care and Maintenance of your Fossil Blu Copper Sink:

Much of the beauty of copper lies in its long-lasting wear and enduring good looks. Follow these simple sink cleaning and maintenance tips, and your Fossil Blu copper sink will retain its original beauty for years to come.

Simple cleaning tips to keep your sink stain-free:

- The charisma and charm of copper is its living finish, which will change and react over the course of use. That means if you accidentally forget to wash out the food from last night's dinner, you will notice a change in the copper finish. This will inevitably happen and is completely normal – Relax and let the natural patina process take over.
- Patina is a natural coating that builds on copper over time to protect it from corrosion. Spots and blemishes will come up from time to time (from citrus, salt, ketchup and toothpaste), but just like a brand new penny – over time it will re-patina and darken, leaving your sink with a rich copperly blend of light dark tones.
- Since most soaps and detergents contain chlorides, Just recommends frequent rinsing of your copper sink, preferably after each use. Combine this simple daily treatment with weekly cleansing. Rinse well and dry. Regularly drying your sink works wonders to prevent water spots.
- Protect the finish of your copper sink and reduce spotting with a monthly coating of copper wax surface protectant.

Maintaining the original beauty of your sink:

- Do not let soap cleansers dry on the sink surface. Rinse regularly to keep the chlorides found in most cleansers from affecting the sink's natural luster.
- Do not allow chlorine bleach and drain cleaners to come into contact with the sink surface. It will remove the patina and drastically alter the finish of your sink.
- Steer clear of steel wool pads and strong abrasive cleansers, as they will scratch the surface. For hard-to-clean projects, try a ScotchBrite scouring pad when the job at hand requires a little extra effort.
- Avoid leaving food, toothpaste or steel and cast iron cookware in your sink for extended periods of time. Iron plus moisture on top of copper can lead to surface rust and staining.
- Rubber dish mats, wet sponges and cleaning pads are not recommended for a lengthy stay in your sink. Since they trap water, discoloration and staining can result.
- Just as you do not use your cutting board to clean the dishes, do not use your sink as a cutting board. Knives and other sharp kitchen instruments will naturally damage the surface of your sink.