

CENTRAL BRASS COMPANY
 1277 Heil Quaker Blvd.
 La Vergne, TN 37086
 (800) 321-8630
 www.centralbrass.com

INSTALLATION

Tools:



Model Number: 0355, 0356 Series

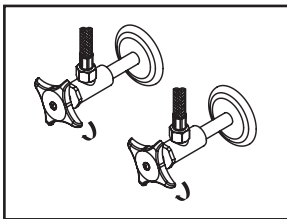


Warnings and Notes:

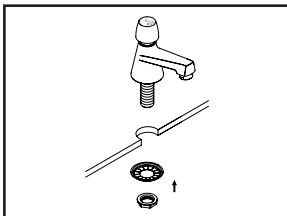
Check with local plumbing code requirements before installation.
 This product should be installed by a local listed plumber.
Do not use plumbers putty on threads.

Installation Steps:

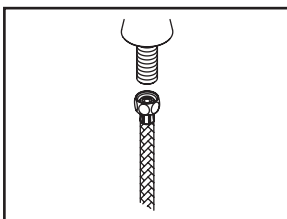
Slow-Close Single Handle Basin Faucet



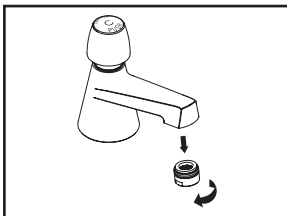
(1) Shut off water supplies. Remove old faucet. Clean mounting surface in preparation for new faucet.



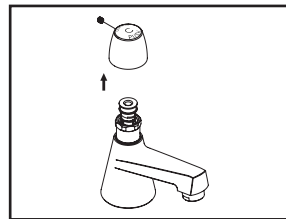
(2) Apply plumber's putty under the faucet. Place the faucet in position on the sink. Slide steel washer through shanks and tighten with locknut from underneath the sink.



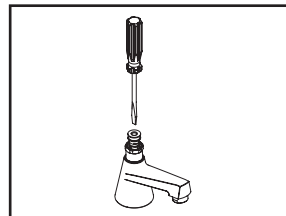
(3) When using stainless steel braided faucet supply hose; this faucet requires one end of the supply hose to have a 1/2" female IPS connection. The other end of this supply hose must match the thread on the water supply valve under your sink. Once you've identified the required size, carefully follow the manufacturer's installation instructions for each hose.



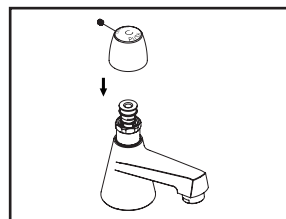
(4) Important: After installation is complete, remove aerator. Turn water supplies on and allow water to run at least one minute. While water is running, check for leaks. Turn off water and replace aerator.



(5) The slow close cartridge is factory preset timing to 10 seconds@60 PSI. Depending on the inlet water pressure and water temperature might vary this timing. If timing need to be changed, remove the handle by loosening Allen screw.



(6) With the help of flat head screwdriver, loosen the screw to decrease the timing and tighten the screw to increase the timing. The timing can be adjusted from 0 to 60 seconds depending on the inlet pressure and water temperature.



(7) Once the satisfactory timing has been adjusted, install the handle by tightening Allen screw.

Central Brass Company, Inc. Limited Lifetime Warranty

Central Brass Company, Inc. warrants its products to the original consumer purchaser to be free from defects in material and workmanship as long as the consumer purchaser owns it. Dated proof of purchase must accompany all warranty claims. All finishes carry a lifetime warranty in residential and 10 year warranty in commercial plumbing service as long as the consumer purchaser owns it.

If the faucet should ever develop a leak or drip during warranty period, Central Brass Company, Inc. will free of charge provide the parts necessary to put the faucet back in good working condition and will replace any part or finish proven defective under normal installation, use, and service to the original consumer purchaser. Damage as a result of misuse, abuse, accident, or improper installation, will consequently void this warranty. Use of non-genuine Central Brass parts will consequently void this warranty. Replacement parts can be obtained from your local dealer or directly from Central Brass. Central Brass recommends using a certified plumber for all faucet installation and repair.

This warranty is limited to replacement of defective parts only. Incidental and consequential damages, labor charges, repair, or replacement costs are expressly excluded. Some states do not allow the exclusion or limitation in incidental or consequential damages, so the above limitation may not apply to you. This warranty gives you specific legal rights, as you may have other rights which vary from state to state.

Installation or maintenance and cleaning must be in compliance with instructions furnished with every Central Brass product. If you find a problem with your product, please immediately contact your nearest Central Brass Company, Inc. dealer or sales representative.

*10-year limited warranty on commercial and multi-family projects except for products specified below. Effective for products sold after 07/01/2017

Sensor Faucets: - The mechanics of the Central Brass Sensor Faucets are warranted for five (5) years from the date of installation. The electronics and solenoid are warranted for a period of one (1) year from the date of installation.

Pre-Rinse:- The mechanics of the Central Brass Pre-rinse Spray valve are warranted for five (5) years from the original date of purchase.

MAINTENANCE AND CARE INSTRUCTIONS

Use clean water to clean the surface of the faucet and dry with a 100% cotton cloth. If water is allowed to evaporate on the faucet surface can lead to build up of mineral deposits. Cleaning with a damp non-abrasive sponge and buffing it dry with a clean soft cloth should help keep product looking beautiful. To remove water spots, use warm water and a soft, damp cloth. Hard water stains may be removed using a 50/50 solution of white vinegar and water. Making sure that to rinse thoroughly with water afterward. As cleaner manufacturers may change their formulations at any time, therefore we do not recommend any specific cleaner.

Avoid using the following which can damage product finish:

- Avoid industrial cleaners and abrasive cleaners, such as those used for toilet bowls, green Scotch-Brite heavy duty scrub sponges, Scrubbing Bubbles Bathroom Cleaner and Lysol Basin Tub, Soft Scrub, and Tile Cleaner.
- Avoid products that state on the label that they remove tarnish and rust, and those containing hydrofluoric, hydrochloric and/or phosphoric acids and caustic agents.
- Avoid harsh abrasives or polishes
- Avoid bleach-based cleaners

Attention California Residents:

“WARNING: This product contains chemicals known to the State of California to cause cancer, and birth defects or other reproductive harm.”

Central Brass
C O M P A N Y, Inc.

For more care information or trouble shooting inquiries about your Central Brass product, please call: **Central Brass Company, Inc.** (800) 321-8630
Monday-Friday 8 AM to 8 PM EST (5 AM to 5 PM PST)
www.centralbrass.com