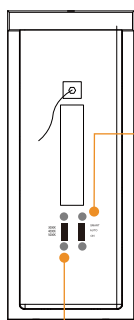


WARNING

PLEASE READ ALL INSTRUCTIONS BEFORE INSTALLATION

- DIY users can install it, but it's recommended to consult a licensed and experienced electrician or contractor to follow local electrical/building codes to prevent personal injury or property damage during installation.
- To avoid the risk of electric shock or damage to components, disconnect AC power before installation or servicing.
- Ensure the product is disconnected and has cooled down before performing any maintenance.
- Any alterations or modifications to this product are strictly prohibited. Doing so may result in personal injury, property damage, or product malfunction.
- This product is designed to operate in most outdoor environments (IP65) with ambient temperatures ranging from -20°C to 50°C (-4°F to 122°F).

Mounting Bracket



SMART Mode:

The microwave (MW) motion and photocell sensors are active in dark environments. When motion is detected, within this 60-second window, the light turns on at 100% brightness. If no motion is detected for 60-second delay time, it dims to 20% brightness. Any additional motion will reset the timer. This advanced mode is highly recommended for residential communities, as it reduces light pollution at night, saves energy, and enhances safety.

AUTO Mode:

The microwave (MW) motion and photocell sensors are active in dark environments. When motion is detected, the light turns on at 100% brightness. If no motion is detected for 60-second delay time, the light turns off completely. Any additional motion within this 60-second window will reset the timer. This is the traditional security AUTO-light mode.

ON Mode:

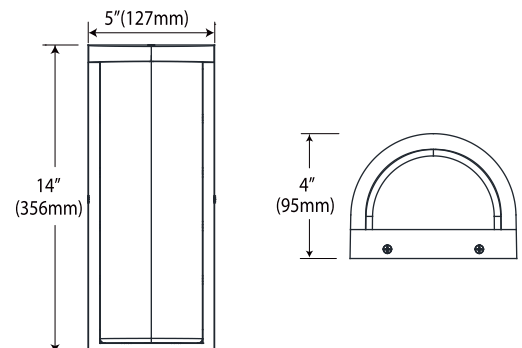
Only the photocell sensor is active, and the microwave (MW) motion sensor is disabled. The light automatically turns on at 100% brightness from dusk to dawn, without any dimming function. This is the traditional commercial lighting mode.

Selectable CCT
3000K-4000K-5000K

Specifications

Wattage:	22W	CRI:	80
Voltage:	120-277VAC	Lumens:	2640lm
Frequency:	50/60Hz	Selectable CCT:	3000-4000-6000K
PF:	>0.9	Rating:	IP65
Working temperature: -20°C to 50°C (-4°F to 122°F).			
Photocell Sensor 30 Lux-On / 70 Lux-Off			
Microwave Sensor 5.8G Hz			
N.W.: 1.7 lbs			
Meas.: W5" x H14" x D4"			

Dimensions



E E Systems Group, Inc.

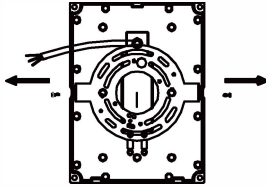
12346 Valley Blvd, Suite A, El Monte, CA 91732

Tel: +1 877-579-3889 Fax: +1 626-452-9194

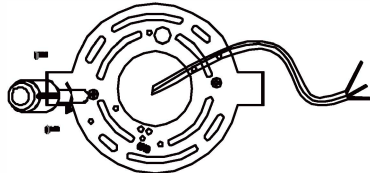
sales@eesgi.com www.eleding.com

Installation Method A

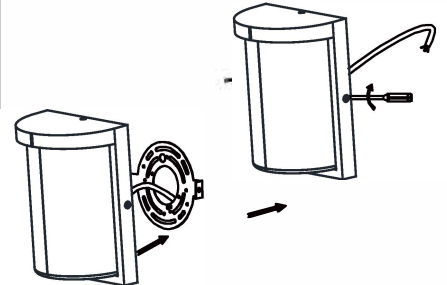
Step 1: Remove the screws on both sides of the light, and take out the installation bracket.



Step 2: Install the bracket onto the wall.

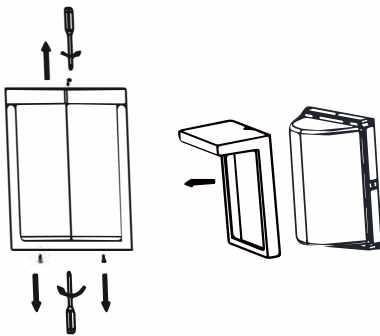


Step 3: Connect power cords, screw and fasten the light on the bracket.

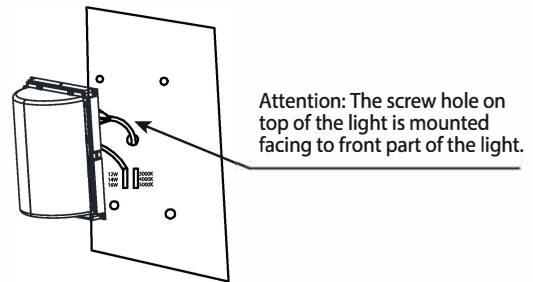


Installation Method B

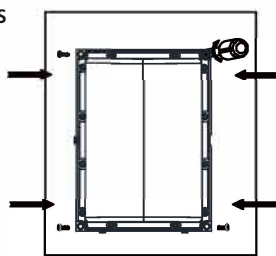
Step 1: Remove the 3 screws on the frame, one on the top and the other two at the bottom, then remove the frame.



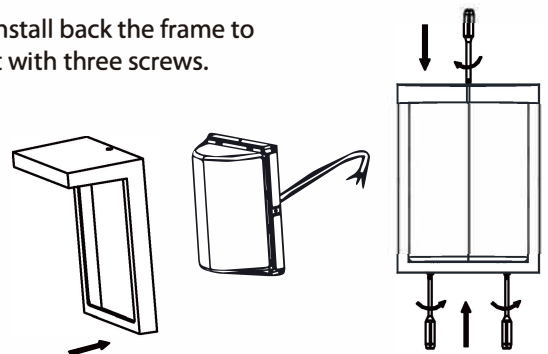
Step 2: Connect the power cords.



Step 3: Install the light onto the wall with 4 KA5X12 screws at the 4 corners of the light.



Step 4: Install back the frame to the light with three screws.



Five Years Limited Warranty

EESGI guarantees this product to be free from defects in material & workmanship for five(5) years.

This warranty does not apply to damage from misuse or incorrect installation/ connection.

This warranty does not cover accessories, bulbs, batteries, high voltage accidents, alterations, unauthorized use or repair, neglect, misuse, abuse, damages or defects resulting from normal wear and tear (including chips, fading scratches, abrasions or discoloration due to usage or sun exposure), or failure to follow instructions for care and maintenance, fire, flood, and Acts of God. This warranty does not include liability for incidental or consequential damages.

EESGI is not responsible for any damages in excess of the retail purchase price of the product under any circumstances.

The consumer is responsible for the installation of, removal of, and reinstallation of the product



E E Systems Group, Inc.

12346 Valley Blvd, Suite A, El Monte, CA 91732

Tel: +1 877-579-3889 Fax: +1 626-452-9194

sales@eesgi.com www.eleding.com