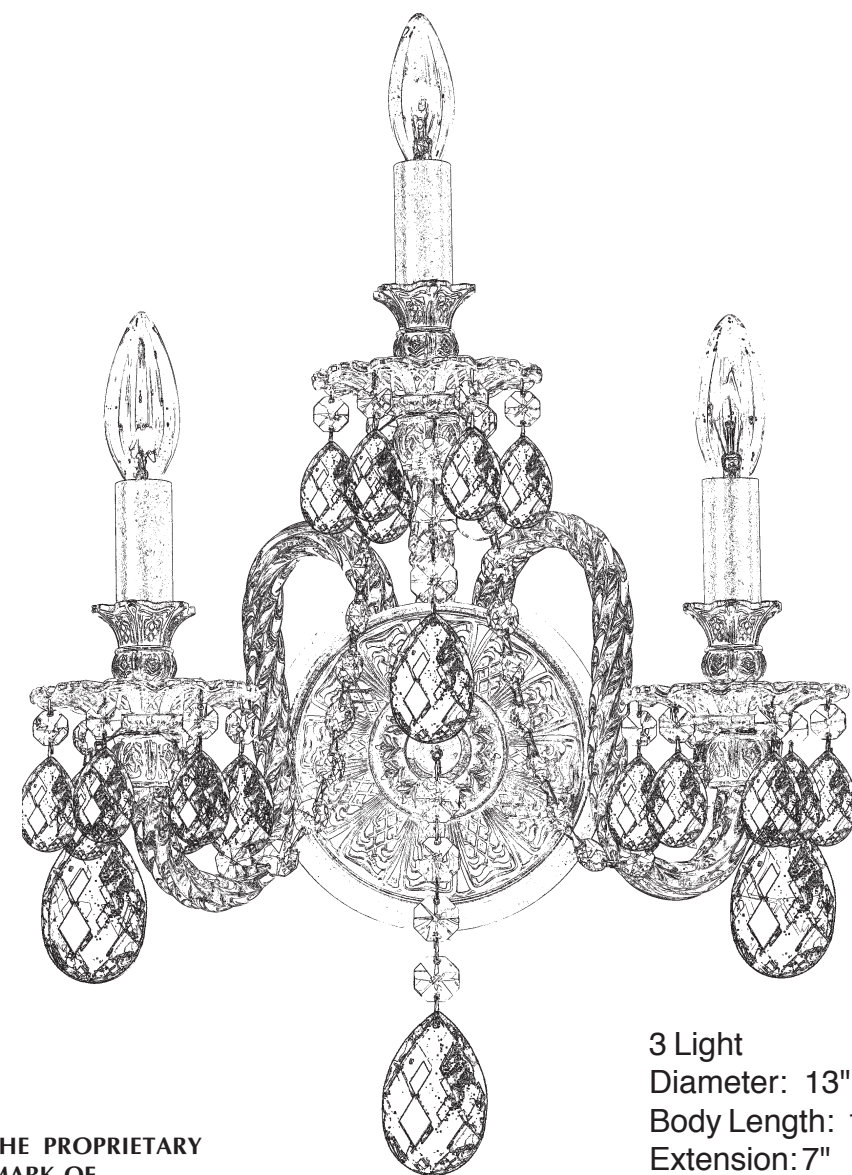


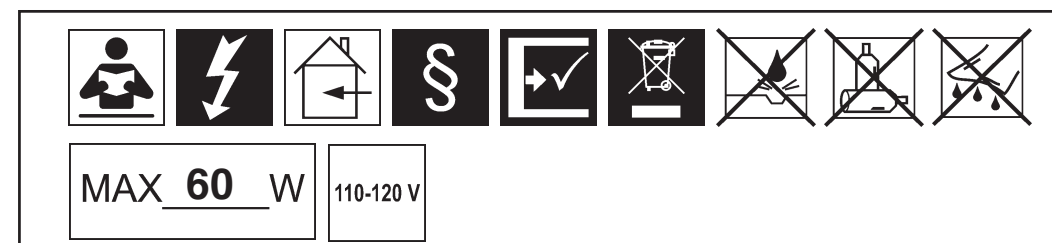


ISABELLE 6303- \_\_ \_\_ 0



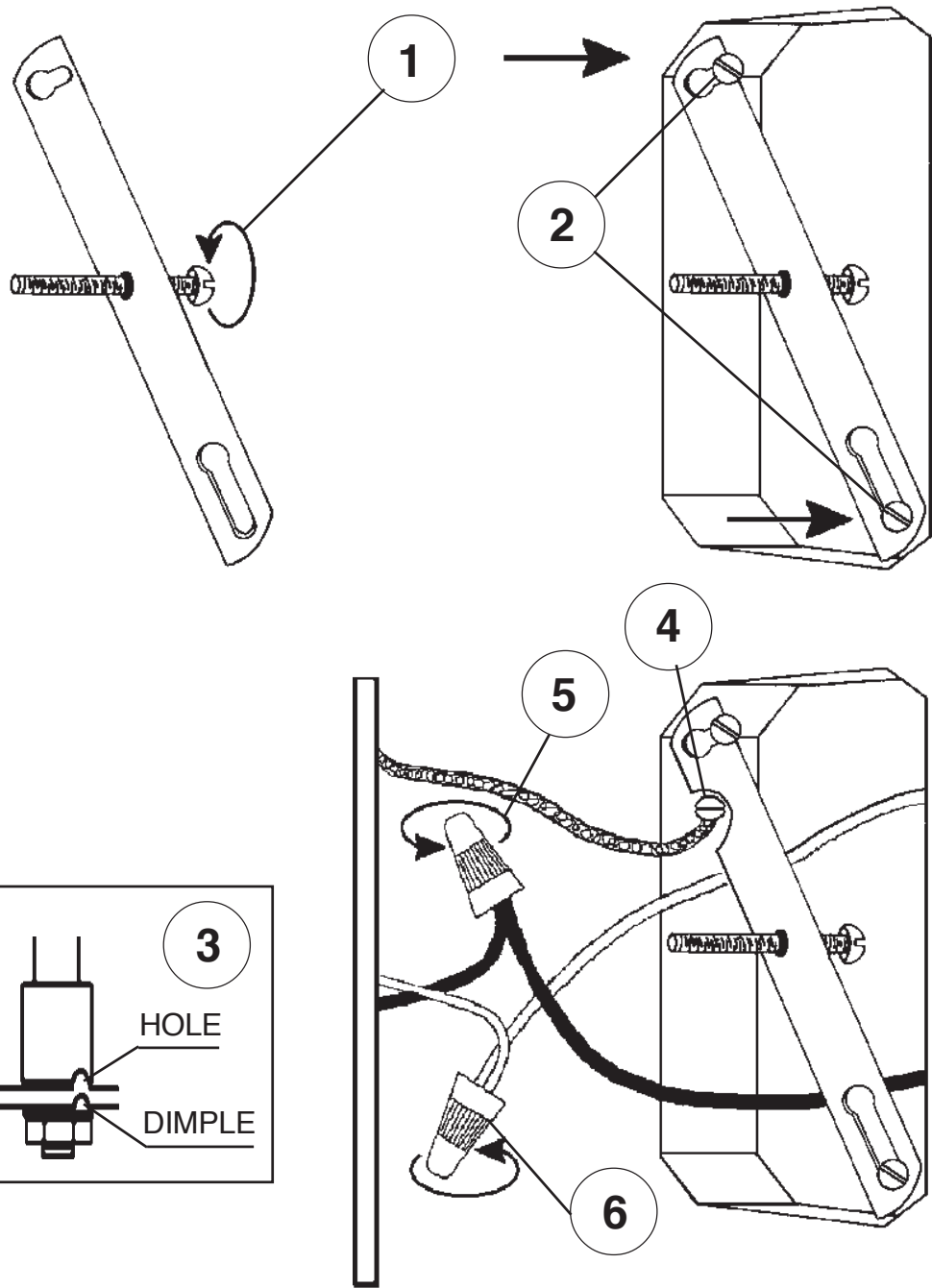
**T**HIS DESIGN IS THE PROPRIETARY  
TRADE DRESS/TRADEMARK OF  
SWAROVSKI LIGHTING, LTD.

3 Light  
Diameter: 13"  
Body Length: 18-1/2"  
Extension: 7"  
Hanging Weight: 3 lbs.

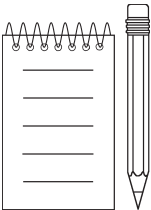
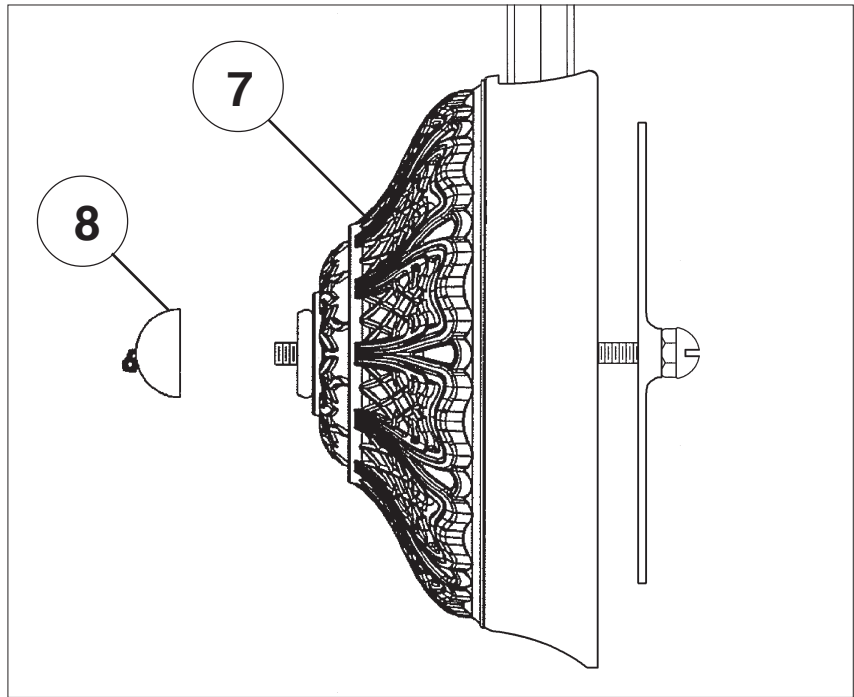


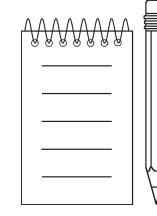
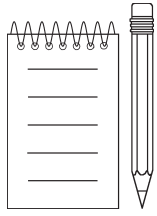
SCHONBEK® is a member of the Swarovski group.

All electrical components must be installed by a licensed electrician in accordance with the National Electric Code and the appropriate local electrical codes.



Turn arms and scroll to line up holes in arms and scroll with dimples in plate. Tighten lock washer and nut to secure arms and scroll in place.





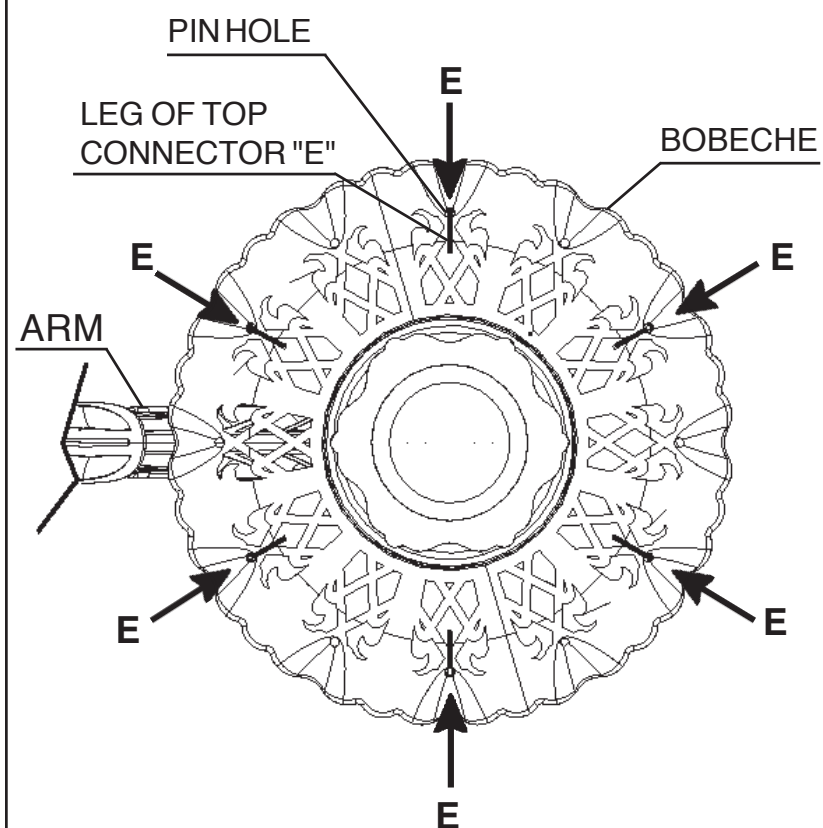


9

You will need 3 - B10  
25 Watts Recommended  
60 Watts Max

Install bulbs and be sure  
to test fixture **BEFORE**  
trimming.

**DIAGRAM #1**



When trimming bobeche with letter "E", insert leg of top connector into pin hole from under bobeche. Hang in every other pin hole starting on either side of the arm (refer to Diagram #1)

**CAUTION:**

Glass parts are fragile. To Avoid  
breakage use care when  
assembling or cleaning.

