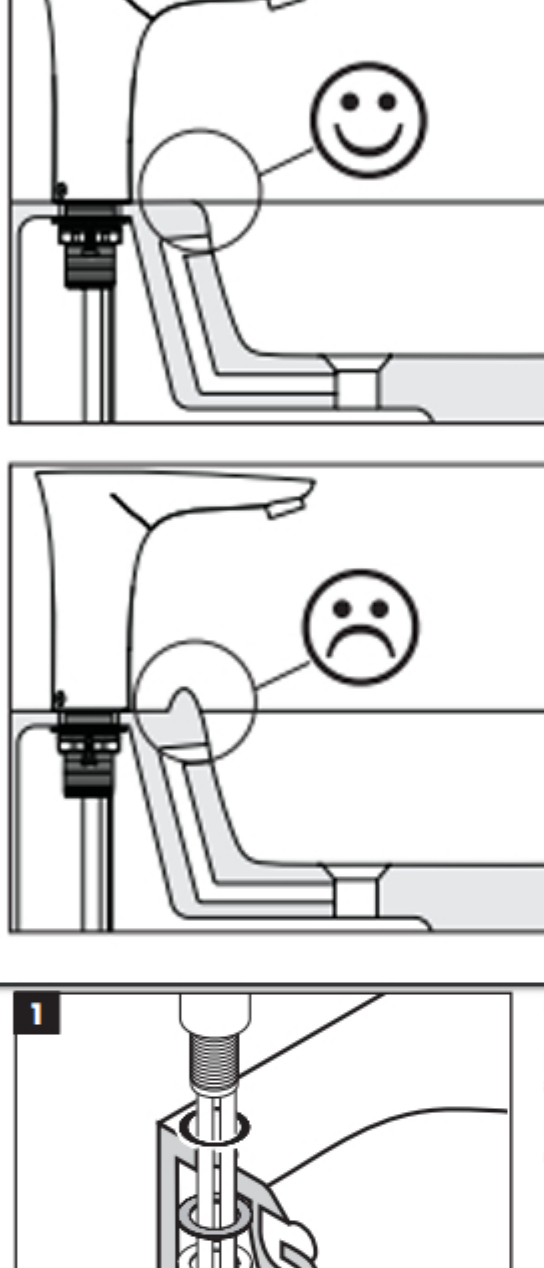
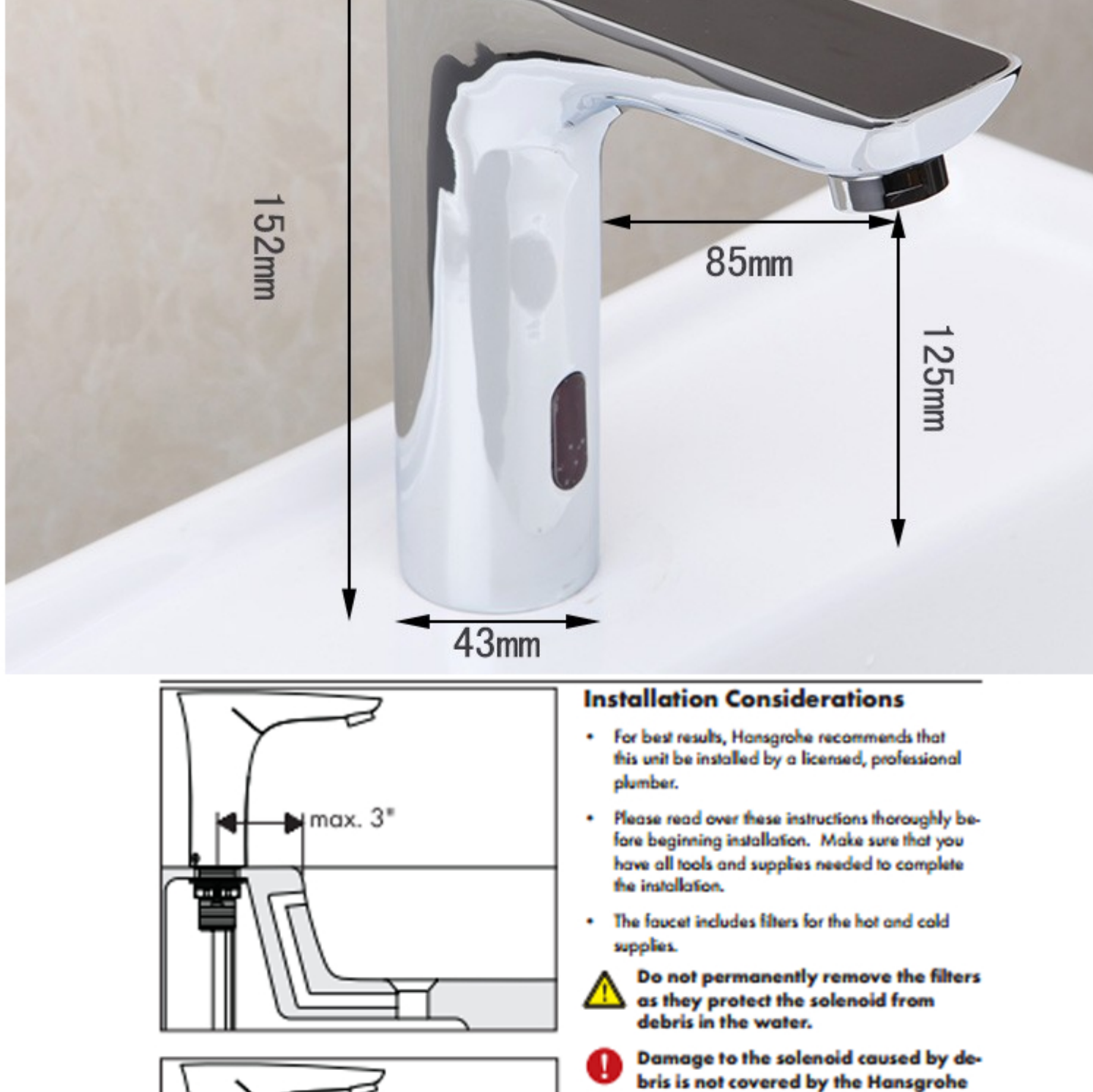


Romo Digital Display Motion Sensor Faucet - Black top

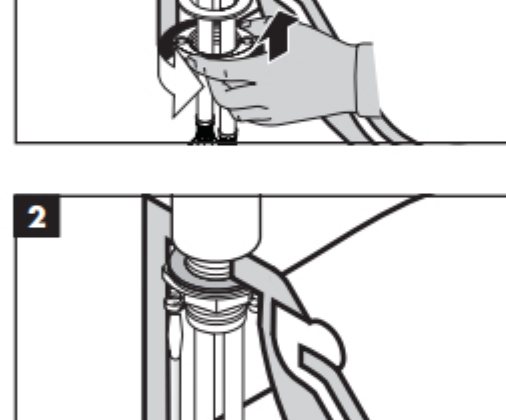


INSTALLATION INSTRUCTIONS



Installation Considerations

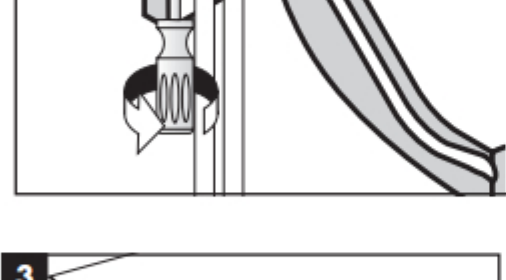
- For best results, Hansgrohe recommends that this unit be installed by a licensed, professional plumber.
- Please read over these instructions thoroughly before beginning installation. Make sure that you have all tools and supplies needed to complete the installation.
- The faucet includes filters for the hot and cold supplies.
- Do not permanently remove the filters as they protect the solenoid from debris in the water.**
- Damage to the solenoid caused by debris is not covered by the Hansgrohe warranty.**
- The faucet includes 10 mm supply hoses and 3/4" adapters.
- Do not install the faucet without the adapters.**
- Do not install the faucet on a lavatory with a raised lip.
- Strong light sources must not shine directly on the faucet's sensor window.
- The sensor is pre-set to the minimum range (approximately 6") at the factory. If the lavatory is large, it may be re-set to maximum range (see page 14).
- The sensor range will vary according to the shape and reflection of the lavatory, the ambient light, and the color/reflectivity of the object/hand approaching the faucet. It may be greater than 8" or less than 6 1/4".
- This faucet does not include a drain.
- Keep this booklet and the receipt (or other proof of date and place of purchase) for this product in a safe place. The receipt is required should it be necessary to request warranty parts.



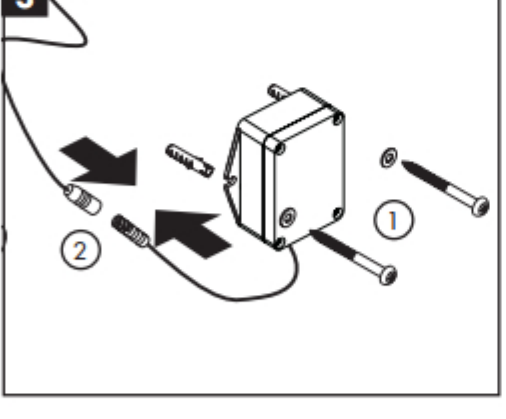
Installation

Place the faucet and sealing ring on the mounting surface.

Install the fiber washer, metal washer, and mounting nut. Tighten the mounting nut by hand.

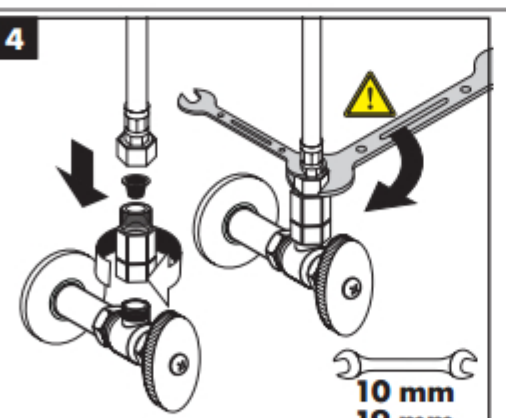


Tighten the tensioning screws.



Install the battery box.

Connect the power cable to the battery box.



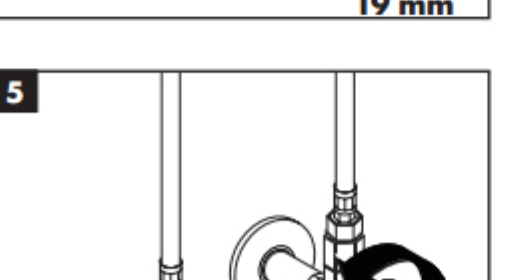
Install the adapters and filters on the stops.

Install the supply hoses on the adapters.

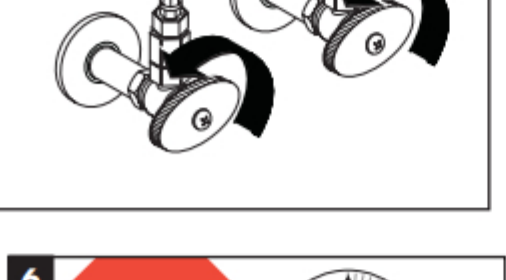
This faucet includes 10 mm hoses.

Do not attempt to install the hoses without the adapters.

Use two wrenches, as shown. Do not allow the hoses to twist.



Turn the water on.



Wait at least 30 seconds before placing a hand in front of the sensor.



The faucet will adjust itself automatically.

The water stream may be unattractive at first. This is normal and will clear after 10 - 15 uses.

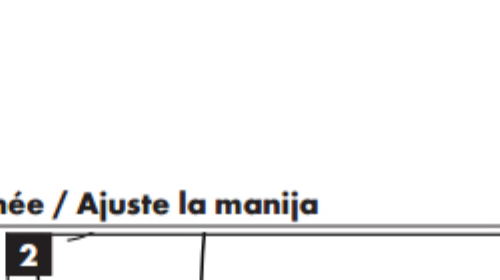
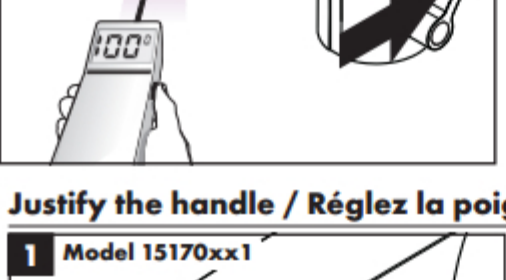
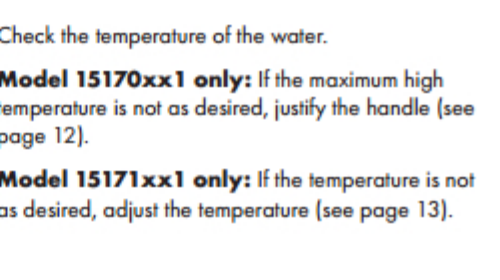
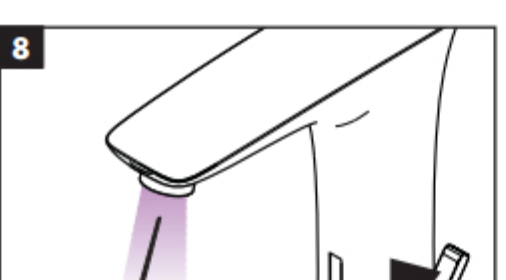
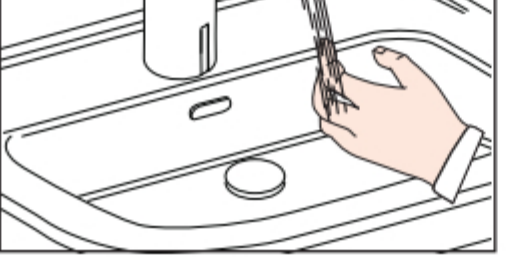


Check the temperature of the water.

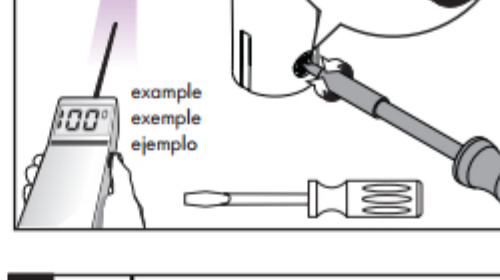
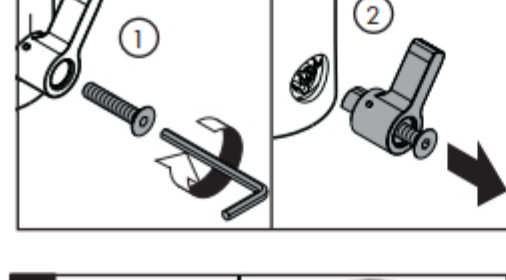
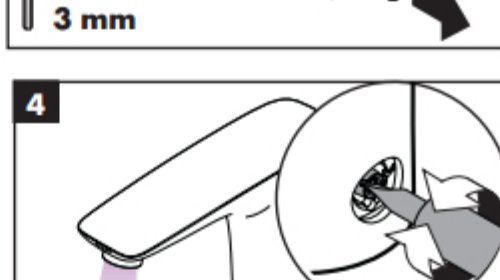
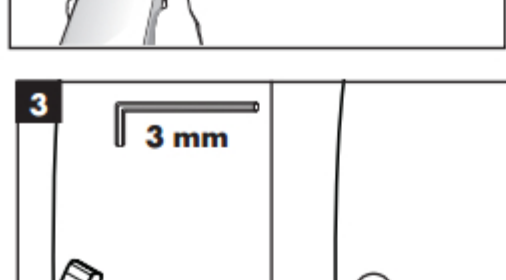
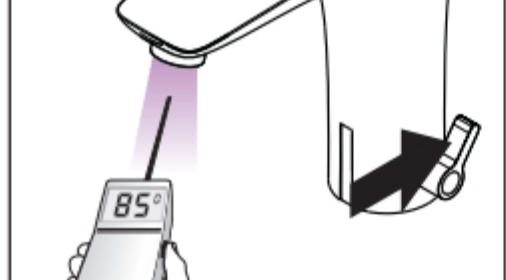
Model 15170xx1 only: If the maximum high temperature is not as desired, justify the handle (see page 12).

Model 15171xx1 only: If the temperature is not as desired, adjust the temperature (see page 13).

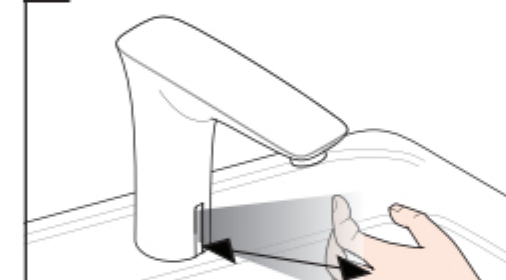
Justify the handle / Réglez la poignée / Ajuste la manija



Set the temperature / Réglez l'eau chaude / Fije la temperatura



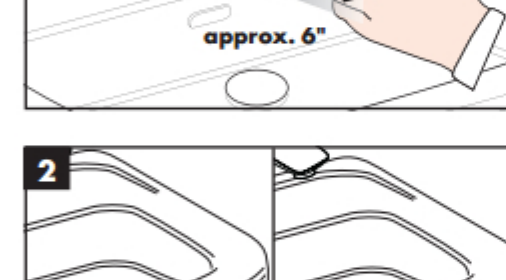
English



Reset the sensor range

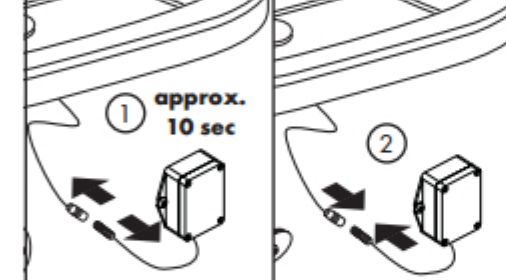
The sensor is set for minimum range (approximately 6") at the factory.

If the lavatory is large, it is possible to increase the sensor range by approximately 2".



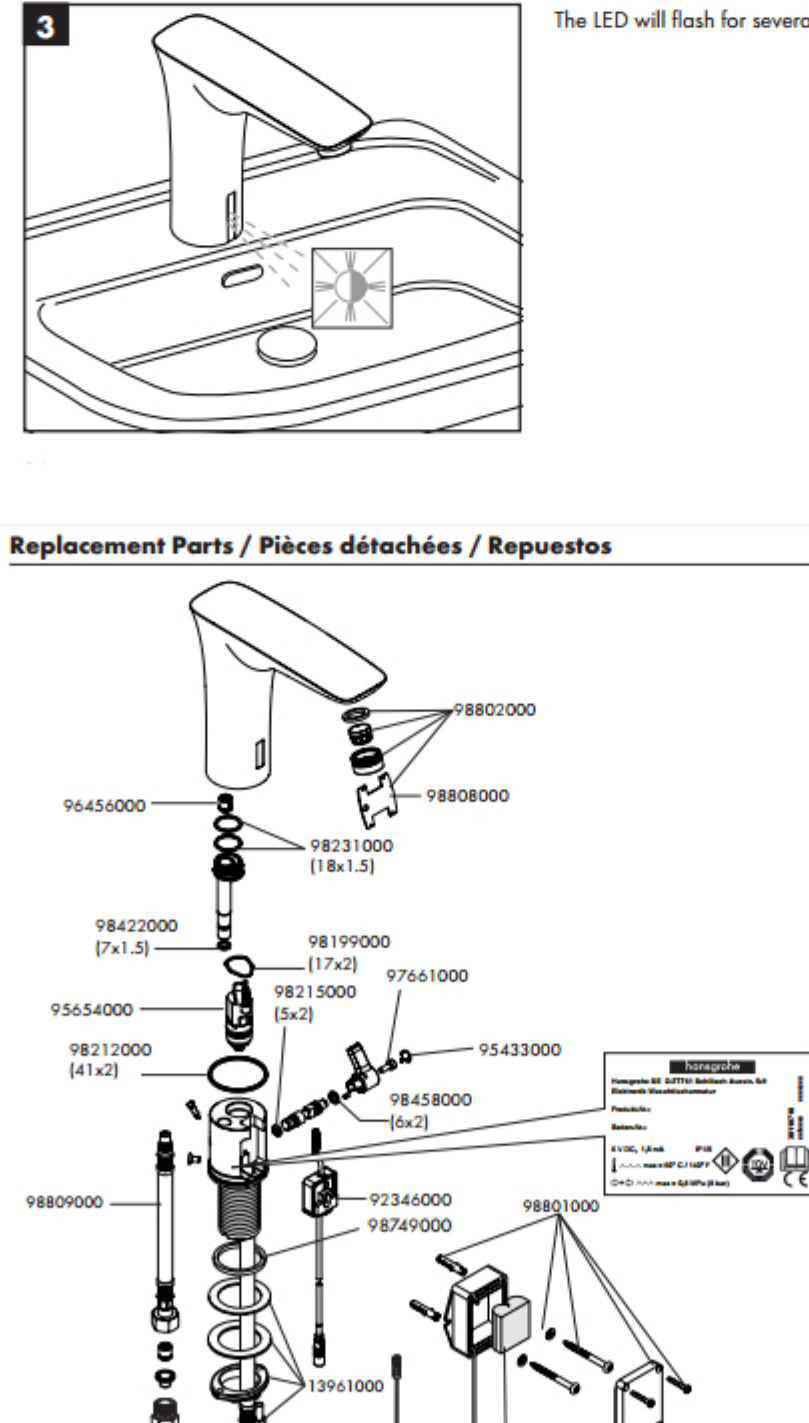
Unplug the unit for 10 seconds

Reconnect the power supply.

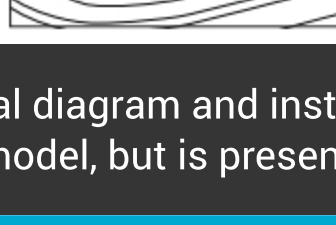
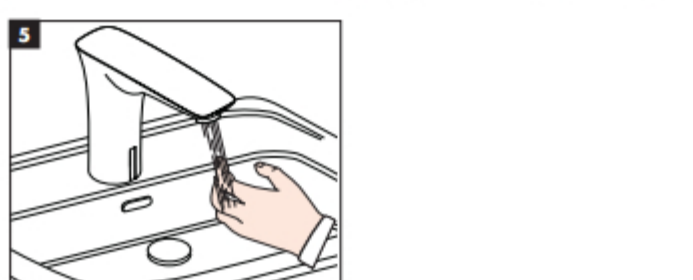
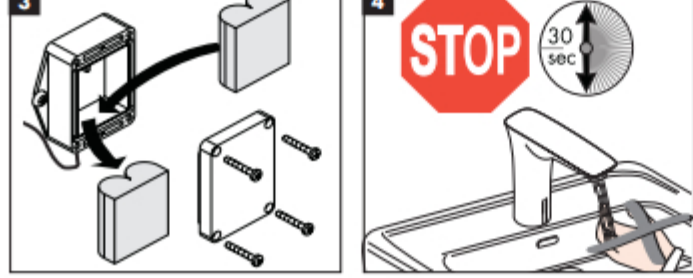


The LED will flash for several seconds.

Replacement Parts / Pièces détachées / Repuestos



Battery Replacement / Remplacement de la pile / Reemplazo de la batería



This General diagram and installation instructions are not intended for any specific model, but is presented as a general guideline for Installations!